

Coaxial

Power Splitter/Combiner

8 Way-0° 50Ω

2 to 250 MHz

ZCSC-8-1+
ZCSC-8-1

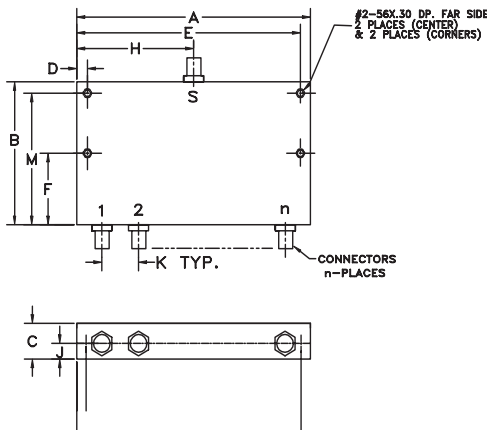

Maximum Ratings

Operating Temperature	-55°C to 100°C
Storage Temperature	-55°C to 100°C
Power Input (as a splitter)	1W max.
Internal Dissipation	0.62W max.

Coaxial Connections

SUM PORT	S
PORT 1,2,3,4,5,6,7,8	1,2,3,4,5,6,7,8

Outline Drawing



Outline Dimensions (inch/mm)

A	B	C	D	E	F
4.00	1.25	.38	.125	3.875	.500
101.60	31.75	9.65	3.18	98.43	12.70
G	H	J	K	M	wt
#2-56	2.00	.19	.500	1.125	grams
--	50.80	4.83	12.70	28.58	77

Features

- high isolation, 30 dB typ.
- low insertion loss, 0.8 dB typ.
- rugged, shielded case

Applications

- VHF
- FM broadcasting
- amateur radio
- federal and defense communications

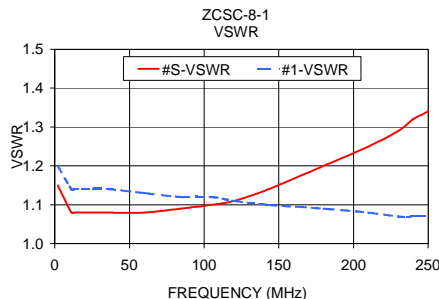
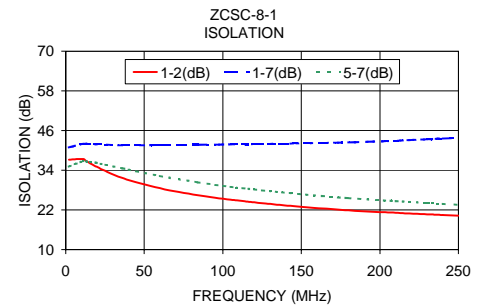
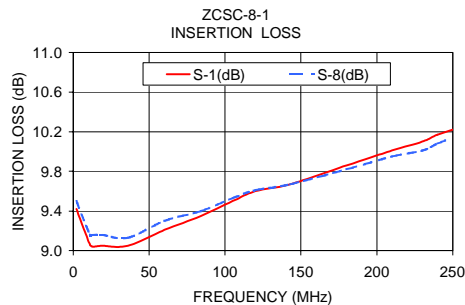
Splitter Electrical Specifications

FREQ. RANGE (MHz)	ISOLATION (dB)						INSERTION LOSS (dB) ABOVE 9 dB						PHASE UNBALANCE (Degrees)			AMPLITUDE UNBALANCE (dB)		
	L		M		U		L		M		U		L	M	U	L	M	U
	Typ.	Min.	Typ.	Min.	Typ.	Min.	Typ.	Max.	Typ.	Max.	Typ.	Max.	Max.	Max.	Max.	Max.	Max.	Max.
f _L -f _U	37	27	30	20	24	18	0.65	1.2	0.8	1.2	1.0	1.6	2.0	4.0	8.0	0.2	0.3	0.5

L = low range [f_L to 10 f_L] M = mid range [10 f_L to f_U/2] U = upper range [f_U/2 to f_U]

Typical Performance Data

Frequency (MHz)	Insertion Loss (dB)						Amplitude Unbalance (dB)	Isolation (dB)				VSWR S	VSWR 1	VSWR 8
	S-1	S-2	S-3	S-4	S-6	S-8		1-2	1-7	3-4	5-7			
2.00	9.42	9.44	9.50	9.54	9.51	9.50	0.12	37.19	40.87	38.99	35.10	1.15	1.20	1.21
11.00	9.06	9.07	9.16	9.20	9.12	9.16	0.14	37.38	42.00	39.26	36.73	1.08	1.14	1.14
13.00	9.04	9.08	9.17	9.20	9.11	9.16	0.15	36.80	41.97	38.61	36.66	1.08	1.14	1.14
19.00	9.05	9.08	9.17	9.19	9.13	9.16	0.14	35.20	41.88	36.71	36.25	1.08	1.14	1.14
36.00	9.05	9.06	9.15	9.13	9.16	9.13	0.11	31.64	41.53	32.78	34.55	1.08	1.14	1.14
60.00	9.21	9.24	9.31	9.26	9.24	9.30	0.09	28.55	41.61	29.47	32.23	1.08	1.13	1.13
84.00	9.35	9.37	9.42	9.36	9.36	9.40	0.08	26.44	41.67	27.27	30.34	1.09	1.12	1.13
105.00	9.50	9.52	9.55	9.49	9.43	9.53	0.13	25.07	41.80	25.86	28.96	1.10	1.12	1.12
120.00	9.60	9.61	9.63	9.57	9.50	9.61	0.13	24.29	41.89	25.10	28.19	1.11	1.11	1.11
143.00	9.67	9.68	9.71	9.62	9.58	9.67	0.13	23.21	42.04	23.99	27.04	1.14	1.10	1.10
180.00	9.86	9.88	9.88	9.79	9.75	9.82	0.13	21.88	42.39	22.66	25.56	1.20	1.09	1.09
210.00	10.01	10.03	10.01	9.92	9.93	9.95	0.13	21.14	42.89	21.95	24.66	1.25	1.08	1.07
230.00	10.10	10.12	10.08	9.98	10.03	10.01	0.16	20.69	43.34	21.53	24.12	1.29	1.07	1.06
240.00	10.17	10.20	10.16	10.06	10.10	10.08	0.15	20.45	43.60	21.30	23.82	1.32	1.07	1.06
250.00	10.22	10.26	10.23	10.11	10.17	10.14	0.16	20.22	43.74	21.08	23.51	1.34	1.07	1.05



electrical schematic



 INTERNET <http://www.minicircuits.com>

P.O. Box 350166, Brooklyn, New York 11235-0003 (718) 934-4500 Fax (718) 332-4661

Distribution Centers NORTH AMERICA 800-654-7949 • 417-335-5935 • Fax 417-335-5945 • EUROPE 44-1252-832600 • Fax 44-1252-837010

Mini-Circuits ISO 9001 & ISO 14001 Certified

 REV. A
 M98898
 ZCSC-8-1
 HY/TD/CP/AM
 060309