

Coaxial

Bi-Directional Coupler

50Ω

High Power

800 to 900 MHz

ZFBDC20-900HP



CASE STYLE: J17

Connectors	Model	Price	Qty.
SMA	ZFBDC20-900HP	\$79.95	(1-9)
BRACKET (OPTION "B")		\$2.50	(1+)

Maximum Ratings

Operating Temperature	-55°C to 100°C
Storage Temperature	-55°C to 100°C

Coaxial Connections

INPUT	2
OUTPUT	3
COUPLED (forward)	1
COUPLED (reverse)	S

Features

- very low insertion loss, 0.1 dB typ.
- excellent directivity, 28 dB typ.
- excellent VSWR, 1.1: typ.
- high power operation, 10W

Applications

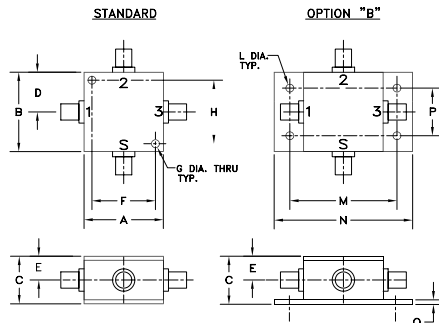
- VSWR measurement
- power monitoring of cellular transmitters
- power levelling

Bi-Directional Coupler Electrical Specifications

FREQ. (MHz)	COUPLING (dB)		MAINLINE LOSS ¹ (dB)		DIRECTIVITY (dB)		VSWR (:1)	POWER INPUT (W)
f_c - f_u	Nom.	Flatness	Typ.	Max.	Typ.	Min.	Typ.	Max.
800-900	20.7±0.6	±0.6	0.1	0.4	28	20	1.1	10

1. Mainline loss includes theoretical power loss at coupled port.

Outline Drawing



Outline Dimensions (inch)

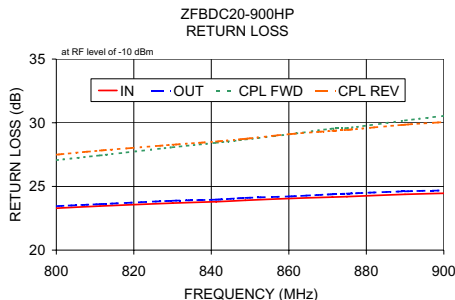
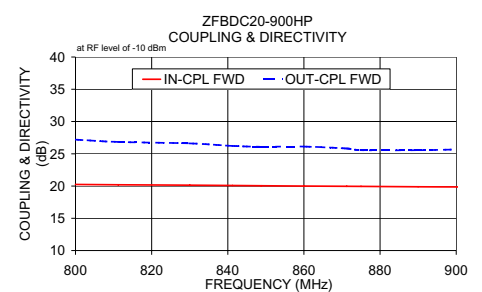
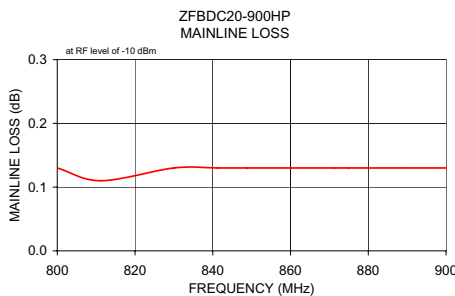
A	B	C	D	E	F	G	H
1.25	1.25	.75	.63	.38	1.000	.125	1.000
31.75	31.75	19.05	16.00	9.65	25.40	3.18	25.40

J	K	L	M	N	P	Q	wt
--	--	.125	1.688	2.18	.75	.07	grams
--	--	3.18	42.88	55.37	19.05	1.78	75.0

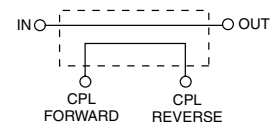
For option B with N-Type connectors, dimension "C" increases to 0.94 inches.

Typical Performance Data

Frequency (MHz)	Mainline Loss (dB)		Coupling (dB)		Directivity (dB)		Return Loss (dB)		
	In-Out	In-Cpl Fwd	Out-Cpl Rev	Out-Cpl Fwd	In-Cpl Rev	In	Out	Cpl Fwd	Cpl Rev
800.00	0.13	20.24	20.31	27.20	24.84	23.29	23.46	27.07	27.50
811.25	0.11	20.20	20.24	26.84	25.58	23.46	23.61	27.44	27.82
830.00	0.13	20.13	20.19	26.62	25.41	23.69	23.88	28.08	28.28
841.25	0.13	20.08	20.15	26.22	25.63	23.80	23.97	28.43	28.53
848.75	0.13	20.05	20.11	26.10	25.73	23.91	24.10	28.69	28.74
860.00	0.13	20.00	20.07	26.12	26.00	24.05	24.22	29.09	29.10
871.25	0.13	19.96	20.03	25.83	26.34	24.16	24.39	29.54	29.37
875.00	0.13	19.95	20.00	25.57	26.37	24.20	24.44	29.58	29.44
890.00	0.13	19.89	19.96	25.56	26.84	24.38	24.62	30.18	29.85
901.25	0.13	19.86	19.91	25.69	26.80	24.47	24.70	30.59	30.08



electrical schematic



INTERNET <http://www.minicircuits.com>

P.O. Box 350166, Brooklyn, New York 11235-0003 (718) 934-4500 Fax (718) 332-4661

Distribution Centers NORTH AMERICA 800-654-7949 • 417-335-5935 • Fax 417-335-5945 • EUROPE 44-1252-832600 • Fax 44-1252-837010

Mini-Circuits ISO 9001 & ISO 14001 Certified

 REV. OR
M95663
ZFBDC-20-900HP
WP/TD/CP
060802