

Coaxial Bias-Tee

Wideband 0.1 to 6000 MHz

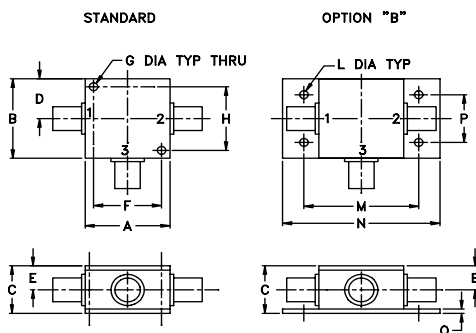
Maximum Ratings

Operating Temperature	-55°C to 100°C
Storage Temperature	-55°C to 100°C
RF Power	30dBm max.
Voltage at DC port	30V max.
Input Current	500mA
DC resistance from DC to RF&DC port	4.5 ohm typ.

Coaxial Connections

RF	1 (SMA female)
RF&DC	2 (SMA male)
DC	3 (SMA female)

Outline Drawing



Outline Dimensions (inch)

A	B	C	D	E	F	G	H
1.25	1.25	.75	.63	.38	1.00	.125	1.000
31.75	31.75	19.05	16.00	9.65	25.40	3.18	25.40

J	K	L	M	N	P	Q	wt
--	--	.125	1.688	2.18	.75	.07	grams
--	--	3.18	42.88	55.37	19.05	1.78	70.0

Features

- wideband, 0.1 to 6000 MHz
- low insertion loss, 0.6 dB typ.
- good isolation, 40 dB typ.

Applications

- biasing amplifiers
- biasing of laser diodes
- biasing of active antennas
- DC return
- DC blocking
- test accessory

Bias Tee Electrical Specifications

MODEL NO.	FREQ. (MHz)	INSERTION LOSS* (dB)						ISOLATION* (dB) (RF port to DC port) (RF&DC port to DC port)						VSWR** (:1)					
		L		M		U		L		M		U		L		M		U	
		Typ.	Max.	Typ.	Max.	Typ.	Max.	Typ.	Min.	Typ.	Min.	Typ.	Min.	Typ.	Max.	Typ.	Max.	Typ.	Max.

ZFBT-6GW(+) 0.1 6000	0.15	0.8	0.6	1.4	1.0	2.2	25	15	40	20	30	17	1.06	1.6	1.13	1.3	1.13	1.5
----------------------	------	-----	-----	-----	-----	-----	----	----	----	----	----	----	------	-----	------	-----	------	-----

L= low range (f_L to $10 f_L$) M=mid range ($10 f_L$ to $f_U/2$) U=upper range ($f_U/2$ to f_U)

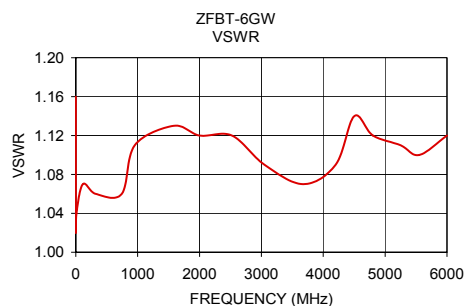
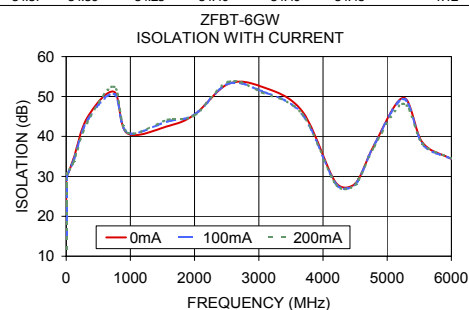
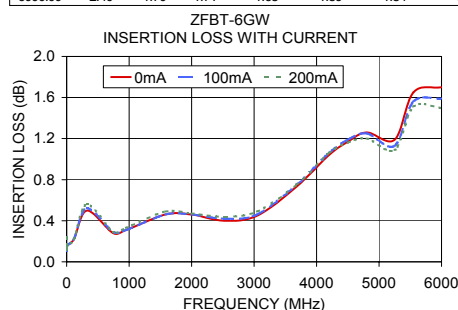
* Insertion Loss 1 dB Max. and Isolation 7 dB Min. 0.1 to 0.3 MHz.

Insertion Loss and Isolation are guaranteed up to 20 dBm-RF power and 200mA DC current.

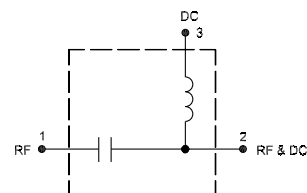
** VSWR measured with open and short at DC port.

Typical Performance Data

Freq. (MHz)	Pin (dBm)	INSERTION LOSS (dB) with current						ISOLATION (dB) (Pin=-10dBm) with current						VSWR (:1)
		0mA	20mA	50mA	100mA	150mA	200mA	0mA	20mA	50mA	100mA	150mA	200mA	
		0mA	20mA	50mA	100mA	150mA	200mA	0mA	20mA	50mA	100mA	150mA	200mA	



electrical schematic



CASE STYLE: K18

Connectors	Model	Price	Qty.
SMA	ZFBT-6GW	\$89.95	(1-9)
BRACKET (OPTION "B")		\$2.50	(1+)

+ RoHS compliant in accordance with EU Directive (2002/95/EC)

The +Suffix identifies RoHS Compliance. See our web site for RoHS Compliance methodologies and qualifications.