

Coaxial Directional Coupler

50Ω

1 to 500 MHz

ZFDC-10-1+
ZFDC-10-1



Maximum Ratings

Operating Temperature	-55°C to 100°C
Storage Temperature	-55°C to 100°C

Coaxial Connections

INPUT	1
OUTPUT	2
COUPLED	3

Features

- excellent directivity, 33 dB typ.
- excellent insertion loss, 0.8 dB typ.
- rugged shielded case

Applications

- VHF/UHF
- instrumentation
- communication receivers & transmitters

BNC version shown
CASE STYLE: K18

Connectors	Model	Price	Qty.
BNC	ZFDC-10-1(+)	\$44.95	(1-9)
SMA	ZFDC-10-1-S(+)	\$49.95	(1-9)
N-TYPE	ZFDC-10-1-N(+)	\$49.95	(1-9)
BRACKET (OPTION "B")		\$2.50	(1+)

+ RoHS compliant in accordance
with EU Directive (2002/95/EC)

The +Suffix identifies RoHS Compliance. See our web site
for RoHS Compliance methodologies and qualifications.

Directional Coupler Electrical Specifications

FREQ. RANGE (MHz)	COUPLING (dB)		MAINLINE LOSS¹						DIRECTIVITY (dB)						VSWR (:1)	POWER INPUT (W)	
			L		M		U		L		M		U				
	f _c -f ₀	Nom.	Flatness	Typ.	Max.	Typ.	Max.	Typ.	Max.	Typ.	Min.	Typ.	Min.	Typ.	Min.	Typ.	Max.
1-500	10.5±0.25	±0.6	1.0	1.3	0.8	1.1	1.0	1.3	32	25	33	25	22	15	1.2	1.5	3.0

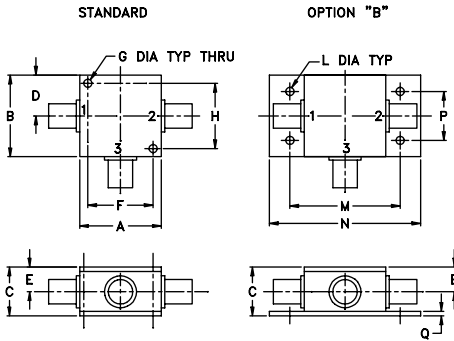
L = low range [f_L to $10 f_L$] M = mid range [$10 f_L$ to $f_U/2$] U = upper range [$f_U/2$ to f_U]

1. Mainline loss includes theoretical power loss at coupled port.

Typical Performance Data

Frequency (MHz)	Mainline Loss (dB) In-Out	Coupling (dB) In-Cpl	Directivity (dB)	Return Loss (dB) In Out	Cpl
1.00	0.97	10.47	58.25	25.76 18.55	19.10
5.00	0.78	10.32	57.52	32.88 20.94	21.28
9.00	0.76	10.31	57.51	33.62 21.25	21.54
67.00	0.77	10.34	46.55	30.69 21.30	21.61
143.00	0.76	10.40	38.96	26.28 20.66	21.32
220.00	0.76	10.49	33.22	23.55 19.85	20.86
270.00	0.80	10.62	30.12	22.35 19.32	20.45
330.00	0.83	10.74	27.02	21.34 18.68	19.89
405.00	0.86	10.90	23.63	20.56 18.03	19.15
500.00	0.85	11.04	20.05	20.16 17.44	18.20

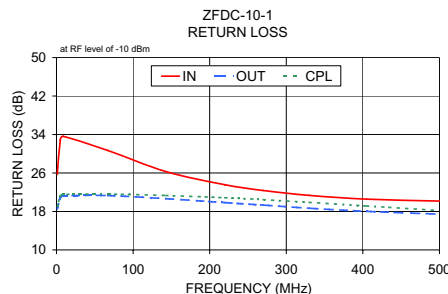
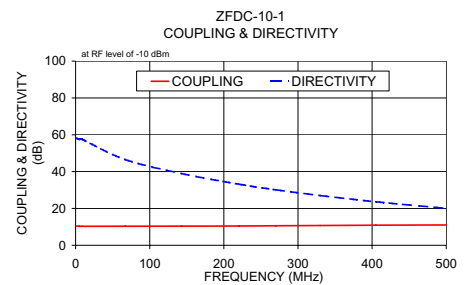
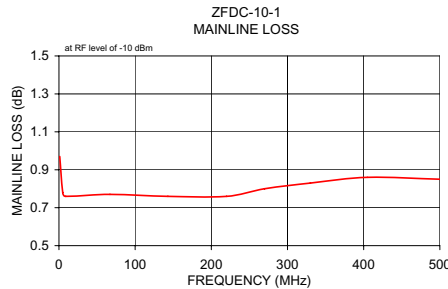
Outline Drawing



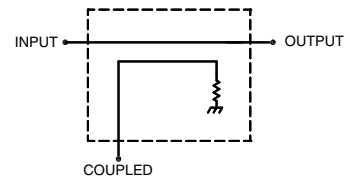
Outline Dimensions (inch/mm)

A	B	C	D	E	F	G	H
1.25	1.25	.75	.63	.38	1.00	.125	1.000
31.75	31.75	19.05	16.00	9.65	25.40	3.18	25.40

J	K	L	M	N	P	Q	wt
--	--	.125	1.688	2.18	.75	.07	grams
--	--	3.18	42.88	55.37	19.05	1.78	70.0



electrical schematic



Mini-Circuits®

INTERNET <http://www.minicircuits.com>

P.O. Box 350166, Brooklyn, New York 11235-0003 (718) 934-4500 Fax (718) 332-4661

Distribution Centers NORTH AMERICA 800-654-7949 • 417-335-5935 • Fax 417-335-5945 • EUROPE 44-1252-832600 • Fax 44-1252-837010

Mini-Circuits ISO 9001 & ISO 14001 Certified

REV. A
M98898
ZFDC-10-1
WZ/TD/CP
060802