

Coaxial Directional Coupler

50Ω

0.03 to 35 MHz

ZFDC-15-6



BNC version shown
CASE STYLE: K18

Maximum Ratings

Operating Temperature	-55°C to 100°C
Storage Temperature	-55°C to 100°C

Coaxial Connections

INPUT	1
OUTPUT	2
COUPLED	3

Features

- excellent directivity, 35 dB typ.
- excellent insertion loss, 0.2 dB typ.
- excellent VSWR, 1.15:1 typ.
- rugged shielded case

Applications

- hf communications
- amateur radio
- instrumentation

Connectors	Model	Price	Qty.
BNC	ZFDC-15-6	\$49.95	(1-9)
SMA	ZFDC-15-6-S	\$54.95	(1-9)
N-TYPE	ZFDC-15-6-N	\$54.95	(1-9)
BRACKET (OPTION "B")		\$2.50	(1+)

Directional Coupler Electrical Specifications

FREQ. RANGE (MHz)	COUPLING (dB)		MAINLINE LOSS ¹						DIRECTIVITY (dB)						VSWR (:1)	POWER INPUT (W)	
			L		M		U		L		M		U				
	f _L -f _U	Nom.	Flatness	Typ.	Max.	Typ.	Max.	Typ.	Max.	Typ.	Min.	Typ.	Min.	Typ.	Min.	Typ.	Max.
0.03-35	15±0.5	±0.5	0.3	0.6	0.2	0.4	0.3	0.6	38	30	35	25	28	20	1.15	2.0	4.0

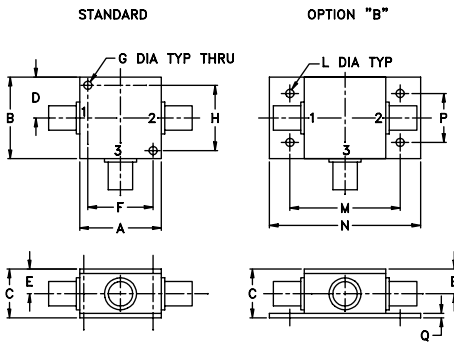
L = low range [f_L to 10 f_L] M = mid range [10 f_L to f_U/2] U = upper range [f_U/2 to f_U]

1. Mainline loss includes theoretical power loss at coupled port.

Typical Performance Data

Frequency (MHz)	Mainline Loss (dB) In-Out	Coupling (dB) In-Cpl	Directivity (dB)	Return Loss (dB) In	Return Loss (dB) Out	Cpl
0.03	0.21	15.35	56.83	31.97	32.85	32.50
0.30	0.16	14.96	55.85	34.78	36.00	35.85
3.00	0.16	14.97	50.17	34.09	36.81	34.28
7.00	0.18	14.98	43.63	33.51	37.39	29.46
11.00	0.18	15.00	39.48	33.10	37.65	25.87
16.00	0.19	15.01	35.75	32.66	37.71	22.70
21.00	0.19	15.03	32.87	32.29	37.59	20.33
26.00	0.20	15.07	30.17	31.89	37.40	18.46
31.00	0.21	15.11	27.85	31.50	37.07	16.91
35.00	0.22	15.15	26.10	31.11	36.76	15.83

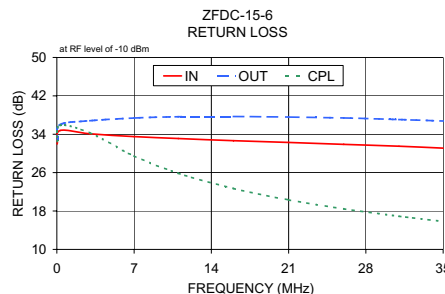
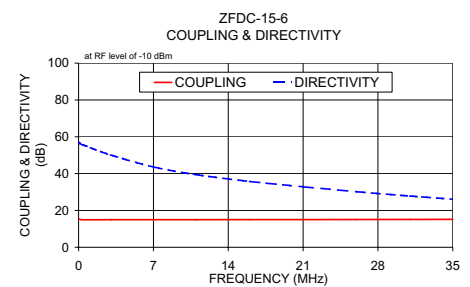
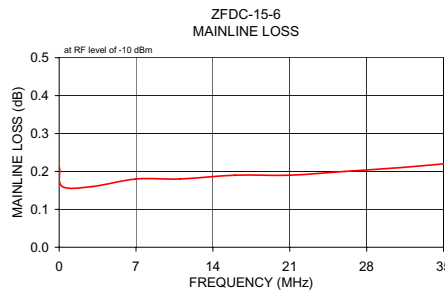
Outline Drawing



Outline Dimensions (inch/mm)

A	B	C	D	E	F	G	H
1.25	1.25	.75	.63	.38	1.00	.125	1.000
31.75	31.75	19.05	16.00	9.65	25.40	3.18	25.40

J	K	L	M	N	P	Q	wt
--	--	.125	1.688	2.18	.75	.07	grams
--	--	3.18	42.88	55.37	19.05	1.78	70.0



electrical schematic

