

Coaxial Bi-Directional Coupler

50Ω

30 to 400 MHz

ZFDC-20-1H+
ZFDC-20-1H



BNC version shown

CASE STYLE: J17

Connectors	Model	Price	Qty.
BNC	ZFDC-20-1H(+)	\$58.95	(1-9)
SMA	ZFDC-20-1H-S(+)	\$63.95	(1-9)
N-TYPE	ZFDC-20-1H-N(+)	\$63.95	(1-9)
BRACKET (OPTION "B")		\$5.00	(1+)

+ RoHS compliant in accordance
with EU Directive (2002/95/EC)

The +Suffix identifies RoHS Compliance. See our web site
for RoHS Compliance methodologies and qualifications.

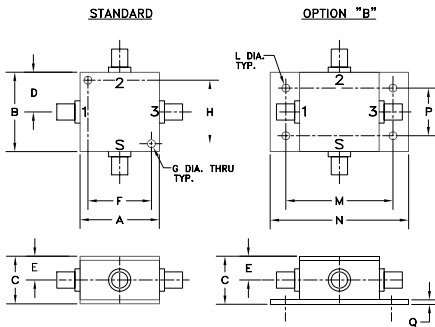
Maximum Ratings

Operating Temperature	-55°C to 50°C
Storage Temperature	-55°C to 100°C

Coaxial Connections

INPUT	S
OUTPUT	1
COUPLED (forward)	3
COUPLED (reverse)	2

Outline Drawing



Outline Dimensions (inch)

A	B	C	D	E	F	G	H
1.25	1.25	.75	.63	.38	1.000	.125	1.000
31.75	31.75	19.05	16.00	9.65	25.40	3.18	25.40

J	K	L	M	N	P	Q	wt
--	--	.125	1.688	2.18	.75	.07	grams
--	--	3.18	42.88	55.37	19.05	1.78	75.0

For option "B" with N-type connectors, dimension "C" increases to 0.94 inches.

Features

- high power, up to 25W
- wideband, 30 to 400 MHz
- excellent directivity, 30 dB typ.
- low insertion loss, 0.15 dB typ.
- rugged shielded case

Applications

- VHF/UHF
- instrumentation
- communication receivers & transmitters
- power leveling

Bi-Directional Coupler Electrical Specifications

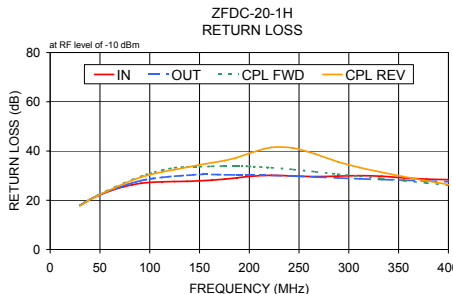
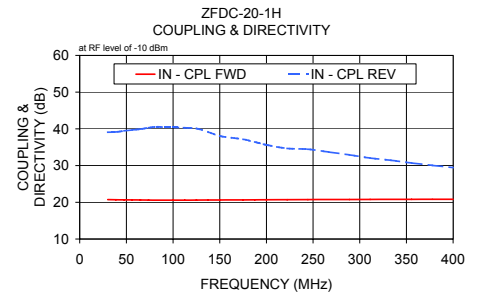
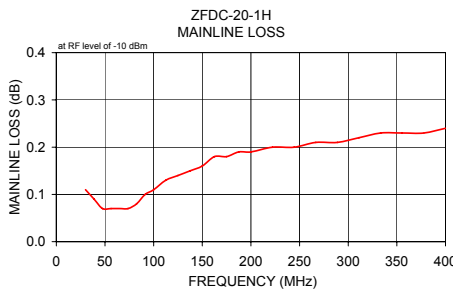
FREQ. (MHz)	COUPLING (dB)		MAINLINE LOSS ¹ (dB)						DIRECTIVITY (dB)						VSWR (:1)	POWER INPUT, W	
			L		M		U		L		M		U			L	MU
f _L -f _U	Norm.	Flatness	Typ.	Max.	Typ.	Max.	Typ.	Max.	Typ.	Min.	Typ.	Min.	Typ.	Min.	Typ.	Max.	Max.
30-400	20.5±0.5	±0.4	0.15	0.4	0.15	0.4	0.3	0.4	30	25	30	25	30	23	1.2	25	25

L= 30-100 MHz M= 100-200 MHz U= 200-400 MHz

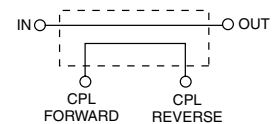
1. Mainline loss includes theoretical power loss at coupled port.

Typical Performance Data

Frequency (MHz)	Mainline Loss (dB)	Coupling (dB)		Directivity (dB)		Return Loss (dB)			
	In-Out	In-Cpl Fwd	Out-Cpl Rev	Out-Cpl Fwd	In-Cpl Rev	In	Out	Cpl Fwd	Cpl Rev
30.00	0.11	20.74	20.73	36.33	39.08	17.88	17.93	17.83	17.78
47.50	0.07	20.68	20.66	36.66	39.46	21.75	21.84	22.02	21.88
65.00	0.07	20.63	20.62	36.97	39.93	24.43	24.65	25.33	25.13
82.50	0.08	20.59	20.58	37.14	40.58	26.31	27.05	28.32	28.10
100.00	0.11	20.59	20.58	37.19	40.42	27.24	28.65	30.88	30.36
150.00	0.16	20.63	20.62	38.74	38.06	27.92	30.48	33.62	34.39
200.00	0.19	20.69	20.67	36.80	35.64	29.69	30.30	33.78	39.07
288.89	0.21	20.77	20.74	33.49	32.92	29.81	29.10	30.60	35.64
333.33	0.23	20.80	20.77	31.88	31.46	29.73	28.43	28.85	31.36
400.00	0.24	20.83	20.80	29.81	29.45	28.38	27.54	26.14	26.41



electrical schematic



Mini-Circuits®

Distribution Centers NORTH AMERICA 800-654-7949 • 417-335-5935 • Fax 417-335-5945 • EUROPE 44-1252-832600 • Fax 44-1252-837010

Mini-Circuits ISO 9001 & ISO 14001 Certified

INTERNET <http://www.minicircuits.com>

REV. A
M106924
ZFDC-20-1H
WP/TD/CP/AM
060818