

# Coaxial Amplifier

50Ω Low Power 0.1 to 1000 MHz

## ZFL-1000

### Features

- wideband, 0.1 to 1000 MHz
- rugged, shielded case
- protected by US Patent, 6,943,629



### Applications

- VHF/UHF
- cellular
- instrumentation
- lab use

CASE STYLE: Y460

Connectors	Model	Price	Qty.
SMA	ZFL-1000	\$79.95	(1-9)
BRACKET (OPTION "B")		\$2.50	(1+)

### Amplifier Electrical Specifications

MODEL NO.	FREQUENCY (MHz)		GAIN (dB)		MAXIMUM POWER (dBm)		DYNAMIC RANGE		VSWR (:1) Typ.		DC POWER	
	f <sub>L</sub>	f <sub>U</sub>	Min.	Flatness Max.	Output (1 dB Compr.)	Input (no damage)	NF (dB) Typ.	IP3 (dBm) Typ.	In	Out	Volt (V) Nom.	Current (mA) Max.
ZFL-1000	0.1	1000	17	±0.7	+9*	+5	6.0	+18	1.5	2.1*	15	105

\* Output VSWR 2.8:1 maximum over 750-1000 MHz, 1 dB compression +7dBm at 500-1000 MHz

Open load is not recommended, potentially can cause damage.

With no load derate max input power by 20 dB

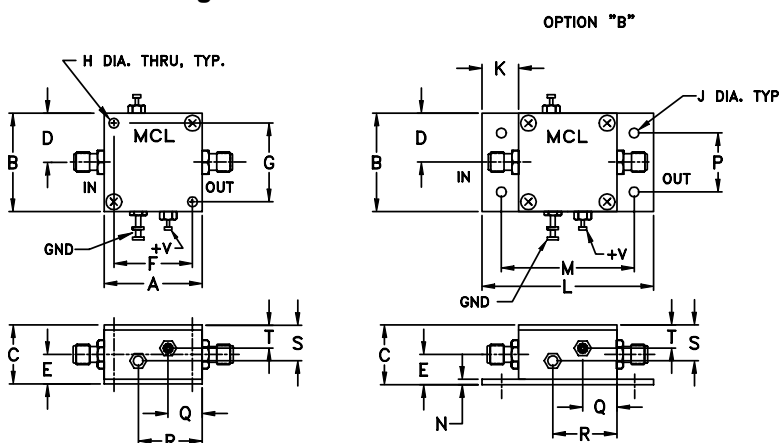
### Maximum Ratings

Operating Temperature -20°C to 71°C

Storage Temperature -55°C to 100°C

DC Voltage +17V Max.

### Outline Drawing



### Outline Dimensions (inch/mm)

A	B	C	D	E	F	G	H	J	K
1.25	1.25	.75	.63	.36	1.000	1.000	.125	.125	.46
31.75	31.75	19.05	16.00	9.14	25.40	25.40	3.18	3.18	11.68
L	M	N	P	Q	R	S	S	wt.	
2.18	1.688	.06	.750	.50	.80	.45	.29	grams	
55.37	42.88	1.52	19.05	12.70	20.32	11.43	7.37	38	



INTERNET <http://www.minicircuits.com>

P.O. Box 350166, Brooklyn, New York 11235-0003 (718) 934-4500 Fax (718) 332-4661

Distribution Centers NORTH AMERICA 800-654-7949 • 417-335-5935 • Fax 417-335-5945 • EUROPE 44-1252-832600 • Fax 44-1252-837010

Mini-Circuits ISO 9001 & ISO 14001 Certified

REV. A  
M104593  
ZFL-1000  
060504  
Page 1 of 2

# Typical Performance Data/Curves

## ZFL-1000

FREQUENCY (MHz)	GAIN (dB)			DIRECTIVITY (dB)			VSWR (:1) 15V		NOISE FIGURE (dB)	POUT at 1 dB COMPR. (dBm)
	12V	15V	16V	12V	15V	16V	IN	OUT		
0.10	16.48	18.08	18.31	25.10	23.90	23.80	1.26	1.17	—	10.39
0.70	16.72	18.38	18.60	24.60	23.30	23.10	1.10	1.12	—	10.43
7.90	16.79	18.40	18.64	24.40	23.30	23.10	1.09	1.13	—	10.53
95.70	16.86	18.38	18.60	24.10	23.10	23.00	1.09	1.13	6.15	10.50
384.70	17.14	18.26	18.45	22.80	22.50	23.00	1.08	1.19	6.21	9.78
487.20	17.01	18.18	18.37	23.30	22.50	22.80	1.13	1.28	6.20	9.75
615.40	17.06	18.20	18.38	22.30	20.00	23.20	1.18	1.42	6.13	9.45
743.60	17.50	18.62	18.85	23.90	22.50	21.20	1.23	1.62	6.04	9.11
871.80	17.43	18.52	18.70	21.20	20.00	19.30	1.28	1.85	6.29	8.60
1000.00	17.19	18.25	18.44	20.00	20.40	20.10	1.29	2.08	6.09	7.99

