

Coaxial

Broadband Amplifier

ZFL-1000GH

50Ω Variable Gain 10 to 1200 MHz

Features

- wideband, 10 to 1200 MHz
- rugged, shielded case



CASE STYLE: Y39

Applications

- VHF/UHF
- cellular
- AGC applications

Connectors	Model	Price	Qty.
SMA	ZFL-1000GH	\$219.00	(1-9)
BRACKET (OPTION "B")		\$2.50	(1+)

Broadband Amplifier Electrical Specifications

MODEL NO.	FREQUENCY (MHz)		GAIN (dB)			MAXIMUM POWER (dBm)		DYNAMIC RANGE		VSWR (:1) Typ.		DC POWER	
	f_L	f_U	Min.	Flatness Max.	Control Range	Output (1 dB Compr.)	Input (no damage)	NF (dB) Typ.	IP3 (dBm) Typ.	In	Out	Volt (V) Nom.	Current (mA) Max.
ZFL-1000GH	10	1200	24	±1.5	30**	+13	+10	15	+25	2.2	2.0	15	170

All specifications at 0 volt control voltage

**Response time (10% to 90%) 25μsec, control voltage 0 to 5V

Open load is not recommended, potentially can cause damage.

With no load derate max input power by 20 dB

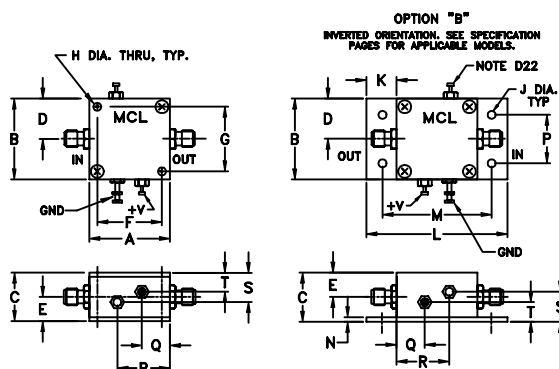
Maximum Ratings

Operating Temperature -20°C to 71°C

Storage Temperature -55°C to 100°C

DC Voltage +17V Max.

Outline Drawing



Outline Dimensions (inch/mm)

A	B	C	D	E	F	G	H	J	K
1.25	1.25	.75	.63	.36	1.000	1.000	.125	.125	.46
31.75	31.75	19.05	16.00	9.14	25.40	25.40	3.18	3.18	11.68
L	M	N	P	Q	R	S	S	wt.	
2.18	1.688	.06	.750	.50	.80	.45	.29	grams	38
55.37	42.88	1.52	19.05	12.70	20.32	11.43	7.37		

INTERNET <http://www.minicircuits.com>

P.O. Box 350166, Brooklyn, New York 11235-0003 (718) 934-4500 Fax (718) 332-4661

Distribution Centers NORTH AMERICA 800-654-7949 • 417-335-5935 • Fax 417-335-5945 • EUROPE 44-1252-832600 • Fax 44-1252-837010

Mini-Circuits ISO 9001 & ISO 14001 Certified

 REV. OR
 M98087
 ZFL-1000GH
 051228
 Page 1 of 2

Typical Performance Data/Curves

ZFL-1000GH

FREQUENCY (MHz)	GAIN (dB)			DIRECTIVITY (dB)			VSWR (:1)		NOISE FIGURE (dB)	POUT at 1 dB COMPR. (dBm)
	12V	15V	16V	12V	15V	16V	IN	OUT		
10.00	27.54	31.27	31.66	39.90	29.30	31.90	1.12	1.49	17.02	17.04
17.70	27.35	31.14	31.50	29.60	22.40	31.20	1.12	1.48	16.97	17.36
41.60	27.35	31.43	31.48	36.60	39.50	46.90	1.12	1.48	16.83	17.35
97.80	27.70	32.02	31.82	27.40	29.00	27.50	1.14	1.49	16.77	17.17
230.00	28.29	32.69	32.42	28.20	24.40	20.40	1.18	1.46	16.45	16.94
437.20	28.19	32.70	32.38	29.30	24.80	25.60	1.33	1.40	15.62	16.66
528.70	27.51	31.97	31.66	26.00	27.70	25.20	1.41	1.38	15.19	16.71
620.30	27.82	32.29	31.97	23.20	22.40	30.20	1.50	1.35	14.75	16.71
681.30	28.06	32.53	32.23	30.60	27.10	30.30	1.54	1.36	14.50	16.65
742.30	27.49	31.98	31.66	30.10	27.10	23.50	1.57	1.36	14.25	16.62
833.80	27.74	32.30	31.98	28.00	27.70	21.50	1.62	1.37	13.94	16.46
925.40	27.20	31.88	31.54	31.30	19.00	27.50	1.64	1.40	13.60	16.23
1016.90	27.85	32.75	32.41	27.40	17.80	19.20	1.64	1.47	13.23	15.84
1108.50	27.50	32.66	32.31	32.90	14.20	21.00	1.62	1.56	12.84	15.32
1200.00	27.37	32.77	32.38	28.40	25.30	23.70	1.58	1.71	12.50	14.68

