

Coaxial Amplifier

ZFL-750

50Ω Low Power 0.2 to 750 MHz

Features

- wideband, 0.2 to 750 MHz
- rugged shielded case
- low noise figure, 6 dB typ.
- protected by US Patent, 6,943,629



Applications

- VHF/UHF
- lab use
- instrumentation

CASE STYLE: Y460

Connectors	Model	Price	Qty.
SMA	ZFL-750	\$74.95	(1-9)
BRACKET (OPTION "B")		\$2.50	(1+)

Amplifier Electrical Specifications

MODEL NO.	FREQUENCY (MHz)		GAIN (dB)		MAXIMUM POWER (dBm)			DYNAMIC RANGE		VSWR (:1) Typ.		DC POWER	
	f_L	f_U	Min.	Flatness Max.	Output (1 dB Compr.)		Input (no damage)	NF (dB) Typ.	IP3 (dBm) Typ.	In	Out	Volt (V) Nom.	Current (mA) Max.
ZFL-750	0.2	750	18	±0.55	—	+9*	+5	6.0	+18	1.5	2.0	15	90

* +7dBm from 500 to 750 MHz

Open load is not recommended, potentially can cause damage.

With no load derate max input power by 20 dB

L= low range (f_L to $f_U/2$)

U= upper range ($f_U/2$ to f_U)

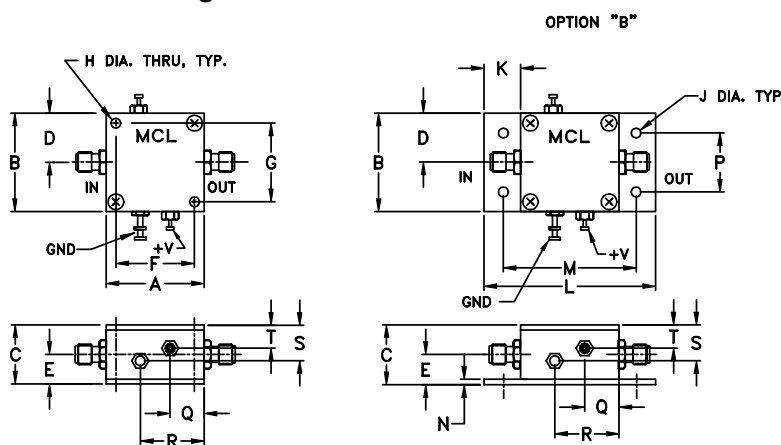
Maximum Ratings

Operating Temperature -20°C to 71°C

Storage Temperature -55°C to 100°C

DC Voltage +17V Max.

Outline Drawing



Outline Dimensions (inch/mm)

A	B	C	D	E	F	G	H	J	K
1.25	1.25	.75	.63	.36	1.000	1.000	.125	.125	.46
31.75	31.75	19.05	16.00	9.14	25.40	25.40	3.18	3.18	11.68
L	M	N	P	Q	R	S	S	wt.	
2.18	1.688	.06	.750	.50	.80	.45	.29	grams	
55.37	42.88	1.52	19.05	12.70	20.32	11.43	7.37	38	



INTERNET <http://www.minicircuits.com>

P.O. Box 350166, Brooklyn, New York 11235-0003 (718) 934-4500 Fax (718) 332-4661

Distribution Centers NORTH AMERICA 800-654-7949 • 417-335-5935 • Fax 417-335-5945 • EUROPE 44-1252-832600 • Fax 44-1252-837010

Mini-Circuits ISO 9001 & ISO 14001 Certified

REV. OR
M98087
ZFL-750
051228
Page 1 of 2

FREQUENCY (MHz)	GAIN (dB)			DIRECTIVITY (dB)			VSWR (:1)		NOISE FIGURE (dB)	POUT at 1 dB COMPR. (dBm)
	12V	15V	16V	12V	15V	16V	IN	OUT		
0.20	18.30	19.78	20.01	22.90	22.20	22.00	1.14	1.10	—	10.39
1.00	18.36	19.85	20.08	23.90	22.90	22.60	1.10	1.08	—	10.50
9.30	18.38	19.86	20.10	23.70	22.60	22.50	1.11	1.09	—	10.61
83.50	18.38	19.84	20.07	23.10	22.10	21.90	1.11	1.09	6.17	10.55
288.60	18.57	19.79	20.00	22.70	22.30	20.70	1.10	1.19	6.22	10.14
365.50	18.55	19.74	19.97	22.40	22.10	20.40	1.11	1.23	6.25	10.07
461.60	18.44	19.64	19.87	22.60	20.60	20.80	1.12	1.32	6.25	9.94
557.70	18.66	19.88	20.07	21.80	20.40	19.70	1.14	1.40	6.20	9.87
653.90	18.87	20.06	20.29	22.10	19.80	20.30	1.17	1.54	6.13	9.54
750.00	18.98	20.20	20.39	19.40	19.30	19.50	1.18	1.69	6.09	9.26

