

Coaxial Frequency Mixer

Level 10 (LO Power +10 dBm) 10 to 2000 MHz

ZFM-150+
ZFM-150



SMA version shown

CASE STYLE: K18

Maximum Ratings

Operating Temperature	-55°C to 100°C
Storage Temperature	-55°C to 100°C
RF Power	50mW
IF Current	40mA

Coaxial Connections

LO	1
RF	2
IF	3

Features

- low conversion loss, 6.05 dB typ.
- good L-R isolation, 35 dB typ, L-I, 30 dB typ.
- wideband, 10 to 2000 MHz
- rugged shielded case

Applications

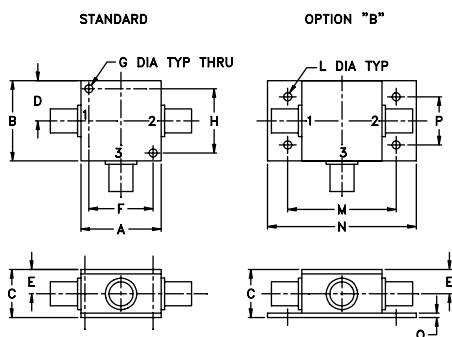
- VHF/UHF
- cellular
- GPS
- instrumentation

Connectors	Model	Price	Qty.
BNC	ZFM-150 (+)	\$69.95 ea.	(1-9)
SMA	ZFM-150-S (+)	\$74.95 ea.	(1-9)
BRACKET (OPTION "B")		\$2.50	(1+)

+ RoHS compliant in accordance with EU Directive (2002/95/EC)

The +Suffix identifies RoHS Compliance. See our web site for RoHS Compliance methodologies and qualifications.

Outline Drawing



Outline Dimensions (inch)

A	B	C	D	E	F	G	H
1.25	1.25	.75	.63	.38	1.00	.125	1.000
31.75	31.75	19.05	16.00	9.65	25.40	3.18	25.40

J	K	L	M	N	P	Q	wt
--	--	.125	1.688	2.18	.75	.07	grams
--	--	3.18	42.88	55.37	19.05	1.78	70.0

Electrical Specifications

FREQUENCY (MHz)		CONVERSION LOSS (dB)				LO-RF ISOLATION (dB)						LO-IF ISOLATION (dB)					
LO/RF f_L - f_U	IF*	Mid-Band m		Total Range Max.	8.0	L		M		U	20	L		M		U	20
		\bar{X}	σ			Typ.	Min.	Typ.	Min.	Typ.	Min.	Typ.	Min.	Typ.	Min.	Typ.	Min.
10-2000	DC-1000	6.05	0.12	8.0	8.0	32	25	35	25	35	20	33	20	30	20	25	20

1 dB COMP.: +5 dBm typ.

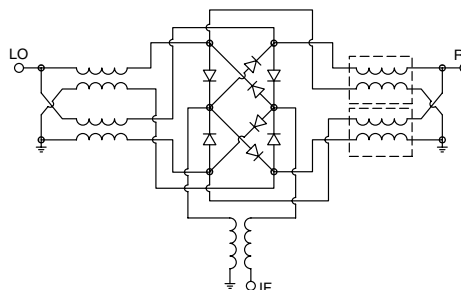
*Below 10 MHz IF, conversion loss increases up to 6 dB higher as frequency decreases to DC.

L = low range [f_L to $10 f_L$] M = mid range [$10 f_L$ to $f_U/2$] U = upper range [$f_U/2$ to f_U]
m = mid band [$2f_L$ to $f_U/2$]

Typical Performance Data

Frequency (MHz)		Conversion Loss (dB)	Isolation L-R (dB)	Isolation L-I (dB)	VSWR RF Port (:1)	VSWR LO Port (:1)
RF	LO	LO +10dBm	LO +10dBm	LO +10dBm	LO +10dBm	LO +10dBm
10.00	40.00	6.45	25.80	24.40	1.62	1.69
20.00	50.00	6.61	30.46	29.11	1.29	1.49
130.61	100.61	6.30	36.94	35.84	1.29	1.39
251.21	221.21	6.42	37.51	37.82	1.34	1.36
432.12	402.12	6.38	36.22	37.58	1.38	1.34
500.00	470.00	6.61	35.79	36.42	1.49	1.30
552.73	522.73	6.47	35.50	35.14	1.60	1.29
673.33	643.33	6.53	34.67	33.34	1.62	1.28
793.94	763.68	6.64	34.16	31.81	1.70	1.26
914.55	884.43	6.67	32.34	30.81	1.79	1.26
974.85	944.91	6.11	31.59	30.10	1.89	1.22
1035.20	1005.40	7.04	30.74	29.56	2.02	1.20
1155.80	1125.60	7.24	30.26	30.08	2.07	1.20
1276.40	1246.50	6.75	29.72	30.93	2.13	1.18
1397.00	1366.80	6.57	28.85	31.94	2.13	1.13
1517.60	1487.50	6.59	28.61	31.80	2.05	1.07
1638.20	1608.00	6.63	27.94	29.65	1.88	1.12
1758.80	1728.70	6.91	28.39	26.17	1.45	1.18
1879.40	1849.50	7.01	30.98	26.61	1.43	1.21
2000.00	1970.00	7.24	32.51	24.79	1.55	1.26

Electrical Schematic



Performance Charts

ZFM-150+ ZFM-150

