

Coaxial Frequency Mixer

Level 17 (LO Power +17 dBm) 5 to 1000 MHz

**ZFM-2H+
ZFM-2H**



SMA version shown

CASE STYLE: K18

Maximum Ratings

Operating Temperature	-55°C to 100°C
Storage Temperature	-55°C to 100°C
RF Power	200mW
IF Current	40mA

Coaxial Connections

LO	1
RF	2
IF	3

Features

- low conversion loss, 6.12 dB typ.
- good L-R isolation, 40 dB typ, L-I, 35 dB typ.
- rugged shielded case

Applications

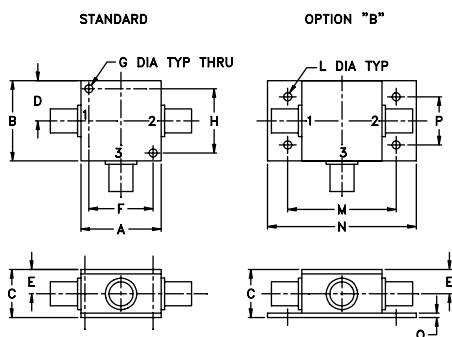
- VHF/UHF
- cellular
- instrumentation

Connectors	Model	Price	Qty.
BNC	ZFM-2H (+)	\$71.95 ea.	(1-9)
SMA	ZFM-2H-S (+)	\$76.95 ea.	(1-9)
BRACKET (OPTION "B")		\$2.50	(1+)

+ RoHS compliant in accordance with EU Directive (2002/95/EC)

The +Suffix identifies RoHS Compliance. See our web site for RoHS Compliance methodologies and qualifications.

Outline Drawing



Outline Dimensions (inch)

A	B	C	D	E	F	G	H
1.25	1.25	.75	.63	.38	1.00	.125	1.000
31.75	31.75	19.05	16.00	9.65	25.40	3.18	25.40

J	K	L	M	N	P	Q	wt
--	--	.125	1.688	2.18	.75	.07	grams
--	--	3.18	42.88	55.37	19.05	1.78	70.0

Electrical Specifications

FREQUENCY (MHz)		CONVERSION LOSS (dB)				LO-RF ISOLATION (dB)						LO-IF ISOLATION (dB)					
LO/RF	IF	Mid-Band		Total		L		M		U		L		M		U	
f_L - f_U		\bar{X}	σ	Max.	Max.	Typ.	Min.	Typ.	Min.	Typ.	Min.	Typ.	Min.	Typ.	Min.	Typ.	Min.
5-1000	DC-1000	6.12	0.12	7.0	10.0	50	40	40	30	30	20	45	40	35	25	25	17

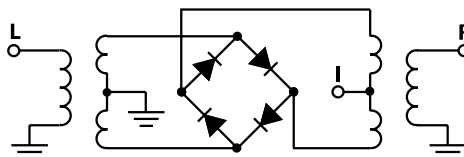
1 dB COMP.: +14 dBm typ.

L = low range [f_L to $10 f_L$] M = mid range [$10 f_L$ to $f_U/2$] U = upper range [$f_U/2$ to f_U]
m= mid band [$2f_L$ to $f_U/2$]

Typical Performance Data

Frequency (MHz)		Conversion Loss (dB)	Isolation L-R (dB)	Isolation L-I (dB)	VSWR RF Port (:1)	VSWR LO Port (:1)
RF	LO	LO +17dBm	LO +17dBm	LO +17dBm	LO +17dBm	LO +17dBm
5.00	35.00	5.75	73.03	64.57	1.24	1.51
35.15	65.15	5.75	53.95	50.91	1.10	1.53
65.30	95.30	5.78	47.75	44.94	1.10	1.52
125.61	95.61	5.83	45.94	42.85	1.09	1.44
185.91	155.91	5.88	41.73	38.74	1.09	1.43
216.06	186.06	5.87	40.07	37.26	1.10	1.39
276.37	246.37	5.70	37.49	34.59	1.11	1.38
336.67	306.67	5.62	35.70	32.97	1.11	1.40
396.98	366.98	5.78	35.50	32.29	1.12	1.37
457.28	427.28	6.15	33.92	30.55	1.13	1.36
517.58	487.58	5.88	34.70	29.07	1.15	1.37
547.74	517.74	5.91	35.38	29.45	1.15	1.39
608.04	578.04	6.36	34.75	28.29	1.16	1.38
668.34	638.34	6.50	34.53	27.06	1.17	1.38
728.65	698.65	6.30	33.69	25.41	1.20	1.36
788.95	758.95	6.43	32.39	25.21	1.22	1.45
849.26	819.26	7.56	32.23	24.28	1.26	1.49
909.56	879.56	8.59	32.46	23.91	1.34	1.52
969.86	939.86	8.55	32.66	24.30	1.46	1.54
1000.00	970.00	8.57	32.20	24.05	1.62	1.53

Electrical Schematic



Performance Charts

ZFM-2H+ ZFM-2H

