

Frequency Mixer

Level 7 (LO Power +7 dBm) 2000 to 4200 MHz

ZFM-4212



SMA version shown

CASE STYLE: K18

Maximum Ratings

Operating Temperature	-55°C to 100°C
Storage Temperature	-55°C to 100°C
RF Power	50mW
IF Current	40mA

Coaxial Connections

LO	1
RF	2
IF	3

Features

- low conversion loss, 5.44 dB typ.
- wideband, 100 to 2000 MHz
- rugged shielded case

Applications

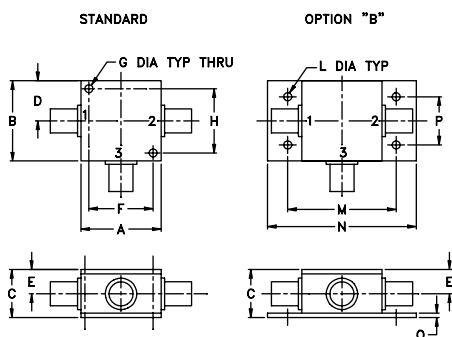
- VHF/UHF
- MMDS
- ISM
- instrumentation

Connectors	Model	Price	Qty.
SMA	ZFM-4212	\$54.95 ea.	(1-9)
BRACKET (OPTION "B")		\$2.50	(1+)

+ RoHS compliant in accordance with EU Directive (2002/95/EC)

The +Suffix identifies RoHS Compliance. See our web site for RoHS Compliance methodologies and qualifications.

Outline Drawing



Outline Dimensions (inch)

A	B	C	D	E	F	G	H
1.25	1.25	.75	.63	.38	1.00	.125	1.000
31.75	31.75	19.05	16.00	9.65	25.40	3.18	25.40
J	K	L	M	N	P	Q	wt
--	--	.125	1.688	2.18	.75	.07	grams
--	--	3.18	42.88	55.37	19.05	1.78	70.0

Electrical Specifications

FREQUENCY (MHz)		CONVERSION LOSS (dB)				LO-RF ISOLATION (dB)		LO-IF ISOLATION (dB)	
LO/RF	IF	Mid-Band							
$f_L - f_U$		\bar{X}	σ	Max.	Total Range Max.	Typ.	Min.	Typ.	Min.
2000-4200	DC-1300	5.44	0.088	—	8.5	25	17	18	10

1 dB COMP.: +1 dBm typ.

Typical Performance Data

Frequency (MHz)		Conversion Loss (dB)	Isolation L-R (dB)	Isolation L-I (dB)	VSWR RF Port (:1)	VSWR LO Port (:1)
RF	LO	LO +7dBm	LO +7dBm	LO +7dBm	LO +7dBm	LO +7dBm
2000.00	1940.00	5.05	25.3	13.6	1.99	6.73
2043.75	1983.75	5.10	25.3	13.5	1.99	6.26
2187.50	2127.50	5.57	23.6	13.9	1.99	5.85
2331.25	2271.25	5.78	24.4	14.0	1.91	6.05
2475.00	2415.00	5.92	26.5	14.6	2.01	6.49
2618.75	2558.75	5.81	27.7	15.9	2.35	6.49
2762.50	2702.50	5.64	28.3	16.2	2.43	6.49
2906.24	2846.24	5.68	28.1	17.2	2.37	6.26
3000.00	2940.00	5.85	28.7	18.2	2.40	6.73
3050.00	2990.00	5.85	28.1	18.5	2.43	7.60
3193.75	3133.75	5.82	27.2	18.7	2.27	8.72
3337.50	3277.50	5.56	26.7	19.2	2.10	8.31
3481.25	3421.25	5.52	27.4	17.9	2.25	8.72
3625.00	3565.00	5.73	27.4	16.5	2.12	5.49
3768.75	3708.75	6.35	27.1	16.0	2.30	4.32
3912.50	3852.50	6.33	28.6	15.6	2.30	4.53
4000.00	3940.00	6.09	29.9	15.5	2.18	4.42
4056.25	3996.25	5.82	30.5	15.4	1.96	4.32
4066.00	4006.00	5.85	30.6	15.3	1.91	4.32
4119.00	4059.00	5.84	30.6	15.2	1.73	4.12

Electrical Schematic

