

Coaxial

Power Splitter/Combiner

16 Way-0° 50Ω

0.5 to 125 MHz

ZFSC-16-1

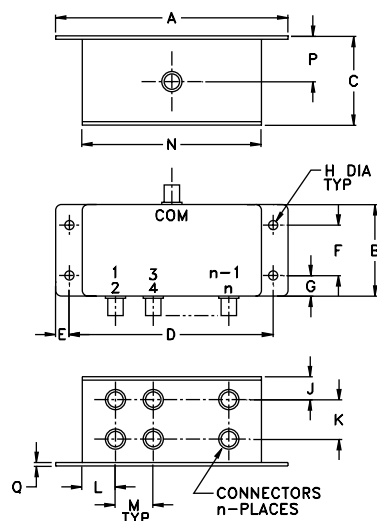
Maximum Ratings

Operating Temperature	-55°C to 100°C
Storage Temperature	-55°C to 100°C
Power Input (as a splitter)	1W max.
Internal Dissipation	0.87W max.

Coaxial Connections

SUM PORT	S(COM)
PORT 1,2,3.....,16	1,2,3.....,16

Outline Drawing



Outline Dimensions (inch/mm)

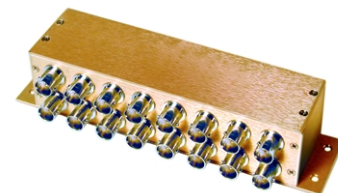
A	B	C	D	E	F	G	H
6.69	1.60	1.50	6.22	.24	.88	.36	.160
169.93	40.64	38.10	157.99	6.10	22.35	9.14	4.06
J	K	L	M	N	P	Q	wt.
.40	.69	.55	.66	5.72	.81	.06	grams
10.16	17.53	13.97	16.76	145.29	20.57	1.52	500

Features

- good isolation, 25 dB typ.
- excellent amplitude unbalance, 0.2 dB typ.
- rugged, shielded case

Applications

- HF/VHF
- instrumentation
- communication systems



BNC version shown

CASE STYLE: R30

Connectors	Model	Price	Qty.
BNC	ZFSC-16-1	\$172.95	(1-9)
SMA	ZFSC-16-1-S	\$217.95	(1-9)

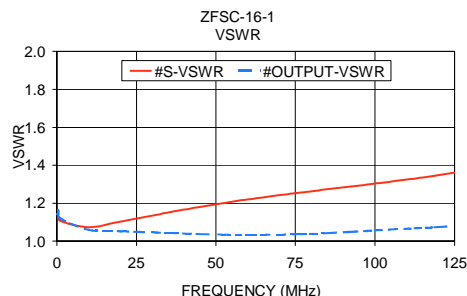
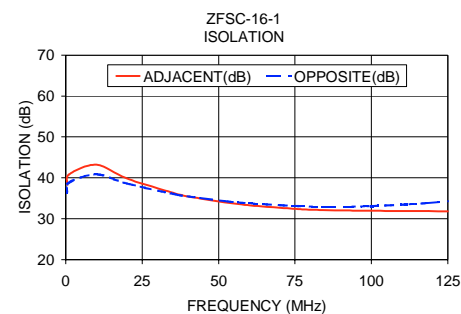
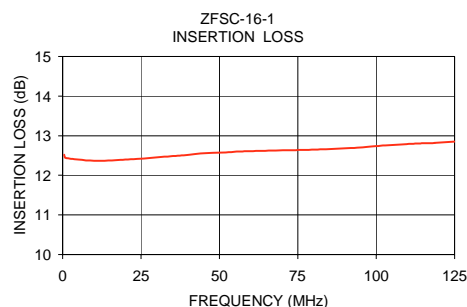
Splitter Electrical Specifications

FREQ. RANGE (MHz)	ISOLATION (dB)			INSERTION LOSS (dB) ABOVE 12 dB			PHASE UNBALANCE (Degrees)			AMPLITUDE UNBALANCE (dB)		
	L	M	U	L	M	U	L	M	U	L	M	U
f_L - f_U	Typ. Min.	Typ. Min.	Typ. Min.	Typ. Max.	Typ. Max.	Typ. Max.	Max.	Max.	Max.	Max.	Max.	Max.
0.5-125	30	24	25	18	20	15	1.0	1.2	1.1	1.3	1.2	1.4

L = low range [f_L to 10 f_L] M = mid range [10 f_L to $f_U/2$] U = upper range [$f_U/2$ to f_U]

Typical Performance Data

Frequency (MHz)	Insertion Loss (dB) S-1	Amplitude Unbalance (dB)	Isolation (dB)		Phase Unbalance (deg.)	VSWR S	VSWR 1
			Adjacent	Opposite			
0.50	12.52	0.02	38.29	36.39	0.35	1.15	1.17
1.00	12.44	0.02	40.79	38.80	0.28	1.11	1.12
10.00	12.37	0.03	43.22	40.82	0.22	1.07	1.06
20.00	12.40	0.02	39.84	38.60	0.24	1.10	1.05
36.00	12.49	0.03	36.13	35.94	0.51	1.15	1.04
44.00	12.55	0.03	34.93	35.05	0.61	1.18	1.04
52.00	12.58	0.04	33.98	34.30	0.63	1.20	1.03
60.00	12.61	0.04	33.28	33.77	0.73	1.22	1.03
76.00	12.64	0.03	32.34	33.09	0.90	1.26	1.04
84.00	12.66	0.05	32.10	32.96	1.04	1.27	1.04
92.00	12.69	0.06	31.97	32.94	1.17	1.29	1.05
100.00	12.74	0.06	31.92	33.09	1.24	1.30	1.06
112.50	12.80	0.05	31.88	33.50	1.42	1.33	1.07
118.75	12.82	0.04	31.88	33.85	1.52	1.34	1.07
125.00	12.85	0.07	31.79	34.29	1.58	1.36	1.08



electrical schematic



INTERNET <http://www.minicircuits.com>

P.O. Box 350166, Brooklyn, New York 11235-0003 (718) 934-4500 Fax (718) 332-4661

Distribution Centers NORTH AMERICA 800-654-7949 • 417-335-5935 • Fax 417-335-5945 • EUROPE 44-1252-832600 • Fax 44-1252-837010

Mini-Circuits ISO 9001 & ISO 14001 Certified

REV. OR
M95084
ZFSC-16-1
HY/TD/CP
060310