

Coaxial

Power Splitter/Combiner

24 Way-0° 50Ω

0.2 to 100 MHz

ZFSC-24-1

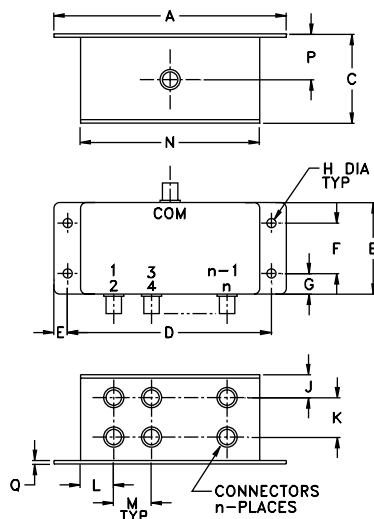
Maximum Ratings

Operating Temperature	-55°C to 100°C
Storage Temperature	-55°C to 100°C
Power Input (as a splitter)	1W max.
Internal Dissipation	0.87W max.

Coaxial Connections

SUM PORT	S(COM)
PORT 1,2,3,4.....,24	1,2,3,4.....,24

Outline Drawing



Outline Dimensions (inch)

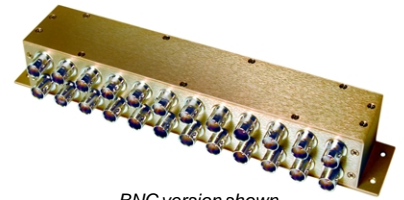
A	B	C	D	E	F	G	H
9.31	1.60	1.50	8.84	.24	.88	.36	.160
7.11	40.64	38.10	224.54	6.10	22.35	9.14	4.06
J	K	L	M	N	P	Q	wt.
.40	.69	.54	.66	8.34	.81	.06	grams
10.16	17.53	13.72	16.76	211.84	20.57	1.52	700

Features

- good isolation, 25 dB typ.
- rugged, shielded case

Applications

- HF/VHF
- test set-ups
- instrumentation



BNC version shown

CASE STYLE: R31

Connectors	Model	Price	Qty.
BNC	ZFSC-24-1	\$264.95	(1-9)
SMA	ZFSC-24-1-S	\$329.95	(1-9)

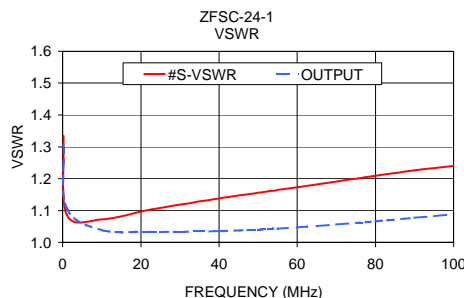
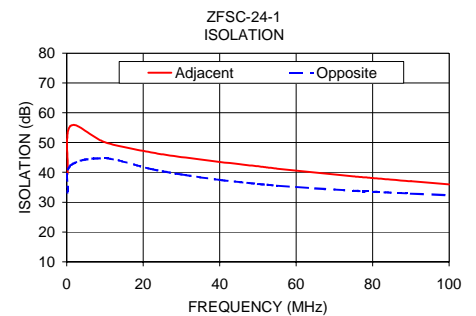
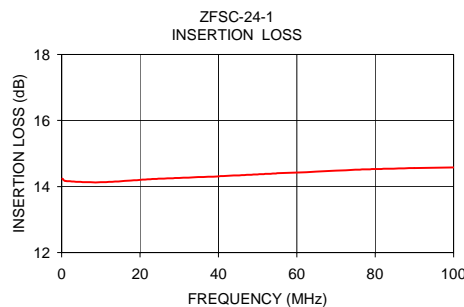
Splitter Electrical Specifications

FREQ. RANGE (MHz)	ISOLATION (dB)	INSERTION LOSS (dB) ABOVE 13.8 dB	AMPLITUDE UNBALANCE (dB)
$f_L - f_U$	Typ. Min.	Typ. Max.	L Max. M Max. U Max.
0.2-100	25 20	1.0 2.0	0.6 0.4 0.5

L = low range [f_L to 10 f_L] M = mid range [10 f_L to $f_U/2$] U = upper range [$f_U/2$ to f_U]

Typical Performance Data

Frequency (MHz)	Insertion Loss (dB) S-1	Amplitude Unbalance (dB)	Isolation (dB)		VSWR S	VSWR OUTPUT
			Adjacent	Opposite		
0.20	14.24	0.04	39.41	33.21	1.33	1.31
1.00	14.17	0.02	55.54	42.27	1.09	1.11
10.00	14.13	0.02	50.08	44.68	1.07	1.04
22.00	14.22	0.01	46.72	41.12	1.10	1.03
30.00	14.26	0.02	45.13	39.29	1.12	1.03
40.00	14.31	0.02	43.49	37.48	1.14	1.04
50.00	14.37	0.03	42.03	36.11	1.16	1.04
55.00	14.40	0.03	41.27	35.55	1.16	1.04
60.00	14.42	0.04	40.59	35.07	1.17	1.05
65.00	14.45	0.04	39.94	34.61	1.18	1.05
70.00	14.48	0.04	39.30	34.22	1.19	1.06
75.00	14.51	0.05	38.67	33.85	1.20	1.06
80.00	14.53	0.05	38.09	33.49	1.21	1.07
90.00	14.56	0.06	36.99	32.88	1.23	1.08
100.00	14.58	0.07	35.94	32.31	1.24	1.09



electrical schematic



INTERNET <http://www.minicircuits.com>

P.O. Box 350166, Brooklyn, New York 11235-0003 (718) 934-4500 Fax (718) 332-4661

Distribution Centers NORTH AMERICA 800-654-7949 • 417-335-5935 • Fax 417-335-5945 • EUROPE 44-1252-832600 • Fax 44-1252-837010

Mini-Circuits ISO 9001 & ISO 14001 Certified

REV. OR
M95084
ZFSC-24-1
HY/TD/CP
051005