

Coaxial Frequency Mixer

Level 23 (LO Power +23 dBm) 10 to 2400 MHz

ZFY-11



BNC version shown

CASE STYLE: K18

Maximum Ratings

Operating Temperature	-55°C to 100°C
Storage Temperature	-55°C to 100°C
RF Power	350mW
IF Current	40mA

Coaxial Connections

LO	1
RF	2
IF	3

Features

- low conversion loss, 7.40 dB typ.
- wideband, 10 to 2400 MHz
- rugged shielded case

Applications

- UHF/VHF
- cellular
- satellite distribution
- GPS
- PCS/DCS

Connectors	Model	Price	Qty.
BNC	ZFY-11	\$84.95	(1-9)
SMA	ZFY-11-S	\$89.95	(1-9)
BRACKET (OPTION "B")		\$2.50	(1+)

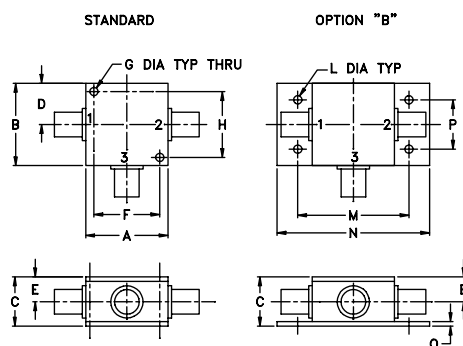
Electrical Specifications

FREQUENCY (MHz)		CONVERSION LOSS (dB)				LO-RF ISOLATION (dB)						LO-IF ISOLATION (dB)					
LO/RF	IF	Mid-Band		Total		L		M		U		L		M		U	
f_L - f_U		\bar{X}	σ	Max.	Max.	Typ.	Min.	Typ.	Min.	Typ.	Min.	Typ.	Min.	Typ.	Min.	Typ.	Min.
10-2400	5-1000	7.40	0.09	8.5	10	28	20	25	20	25	20	28	20	26	20	25	20

1 dB COMP.: +20 dBm typ.

L = low range [f_L to 10 f_L] M = mid range [10 f_L to $f_U/2$] U = upper range [$f_U/2$ to f_U]
m = mid band [$2f_L$ to $f_U/2$]

Outline Drawing



Outline Dimensions (inch/mm)

A	B	C	D	E	F	G	H
1.25	1.25	.75	.63	.38	1.00	.125	1.000
31.75	31.75	19.05	16.00	9.65	25.40	3.18	25.40
J	K	L	M	N	P	Q	wt
--	--	.125	1.688	2.18	.75	.07	grams
--	--	3.18	42.88	55.37	19.05	1.78	70.0

Typical Performance Data

Frequency (MHz)		Conversion Loss (dB)	Isolation L-R (dB)	Isolation L-I (dB)	VSWR RF Port (:1)	VSWR LO Port (:1)
RF	LO	LO +23dBm	LO +23dBm	LO +23dBm	LO +23dBm	LO +23dBm
10.00	40.00	7.46	41.65	30.72	1.55	1.24
20.00	50.00	7.51	43.95	31.06	1.54	1.22
50.00	80.00	7.74	44.45	30.74	1.51	1.31
87.10	57.10	7.81	44.86	29.91	1.50	1.26
100.00	70.00	7.66	44.68	29.62	1.49	1.25
200.00	170.00	7.59	46.21	28.67	1.47	1.22
318.39	288.39	8.03	41.22	28.91	1.45	1.23
500.00	470.00	7.47	37.07	29.62	1.43	1.28
626.77	596.77	7.57	33.53	30.05	1.38	1.34
780.97	750.97	7.27	33.54	31.66	1.34	1.29
1000.00	970.00	7.77	33.08	33.53	1.38	1.23
1089.36	1059.36	7.84	33.62	34.45	1.49	1.33
1243.54	1213.54	8.04	34.16	36.92	1.59	1.35
1397.74	1367.74	8.31	33.51	37.46	1.82	1.48
1500.00	1470.00	8.18	34.49	39.38	1.99	1.58
1706.13	1676.13	8.31	34.41	45.70	2.18	1.69
2000.00	1970.00	8.17	37.07	38.82	2.32	1.71
2091.61	2061.61	8.07	37.89	36.35	2.32	1.68
2245.81	2215.81	7.59	37.54	34.57	2.28	1.74
2400.00	2370.00	7.11	35.91	33.44	2.15	1.77

Electrical Schematic

