

Coaxial Amplifier

50Ω High Power 5 to 500 MHz

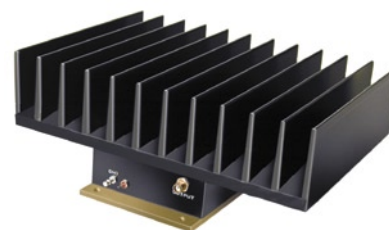
ZHL-5W-1

Features

- wideband, 5 to 500 MHz
- high power output, +37 dBm min.
- high gain, 40 dB min.
- low noise, 4 dB typ.
- high IP3, +49 dBm typ.

Applications

- VHF/UHF
- instrumentation
- laboratory



CASE STYLE: DDD131

Connectors	Model	Price	Qty.
SMA	ZHL-5W-1	\$995.00	(1-9)

Amplifier Electrical Specifications

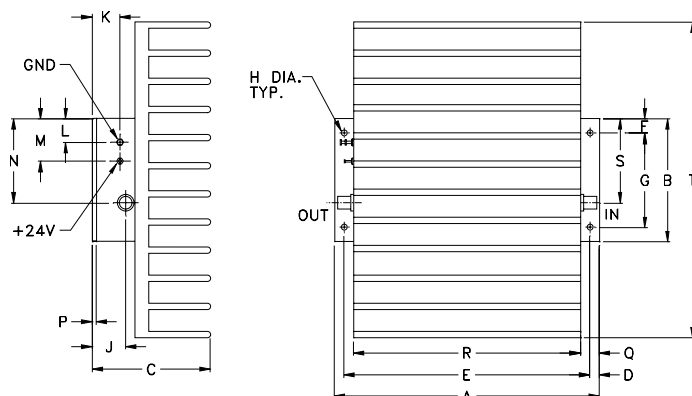
MODEL NO.	FREQUENCY (MHz)		GAIN (dB)		MAXIMUM POWER (dBm)		DYNAMIC RANGE		VSWR (:1)		DC POWER	
	f _L	f _U	Min.	Flatness Max.	Output (1 dB compr.) Min.	Input (no damage)	NF (dB) Typ.	IP3 (dBm) Typ.	In	Out	Volt (V) Nom.	Current (A) Max.
ZHL-5W-1	5	500	40	±1.7	+37	0	4	+49	2.0	2.5	24	3.3

Open load is not recommended, potentially can cause damage.
With no load derate max input power by 20 dB

Maximum Ratings

Operating Temperature	-20°C to 65°C
Storage Temperature	-55°C to 100°C
DC Voltage	+25V Max.

Outline Drawing



Outline Dimensions (inch/mm)

A	B	C	D	E	F	G	H	J	K
7.00	3.25	3.13	.25	6.500	.38	2.500	.156	.88	.43
177.80	82.55	79.50	6.35	165.10	9.65	63.50	3.96	22.35	10.92
L	M	N	P	Q	R	S	T	wt	
.62	1.00	2.63	.125	.50	6.00	2.23	8.35	grams	
15.75	25.40	66.80	3.18	12.70	152.40	56.64	212.09	1884	

FREQUENCY (MHz)	GAIN (dB)			VSWR (:1)		POUT at 1 dB COMPR. (dBm)	FREQUENCY (MHz)	NOISE FIGURE (dB)
	23V	24V	25	IN	OUT			
5.00	44.82	44.8	44.79	1.41	2.24	38.75	10.00	4.67
10.00	45.77	45.76	45.71	1.18	2.22	39.69	100.00	3.79
50.00	45.99	45.96	45.93	1.12	2.22	39.68	200.00	3.87
100.00	46.37	46.40	46.40	1.09	2.30	39.68	300.00	3.96
140.00	46.26	46.32	46.35	1.19	2.23	39.71	500.00	3.91
180.00	46.13	46.22	46.27	1.26	2.15	39.59		
200.00	46.12	46.16	46.23	1.26	2.16	39.54		
240.00	45.76	45.80	45.87	1.17	2.14	39.58		
260.00	45.32	45.43	45.47	1.14	2.09	39.64		
300.00	44.40	44.48	44.50	1.27	2.01	39.56		
360.00	44.72	44.82	44.87	1.50	2.07	39.49		
400.00	46.08	46.18	46.23	1.48	2.08	39.23		
440.00	45.69	45.81	45.93	1.43	1.88	39.01		
480.00	43.67	43.80	43.92	1.51	1.68	38.11		
500.00	42.93	43.03	43.15	1.51	1.71	37.42		

