

Coaxial Amplifier

ZHL-6A

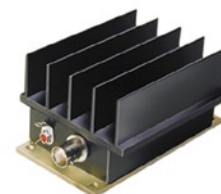
50Ω Medium Power 0.0025 to 500 MHz

Features

- wideband, 0.0025 to 500 MHz
- high IP3, +34 dBm typ.
- protected by US Patent, 6,943,629

Applications

- HF/VHF
- communication systems
- UHF TV
- lab use



CASE STYLE: S32

Connectors	Model	Price	Qty.
BNC	ZHL-6A	\$199.00	(1-9)

Amplifier Electrical Specifications

MODEL NO.	FREQUENCY (MHz)		GAIN (dB)			MAXIMUM POWER (dBm)		DYNAMIC RANGE		VSWR (:1) Typ.		DC POWER	
	f_L	f_U	Typ.	Min.	Flatness Max.	Output (1 dB Compr.)	Input (no damage)	NF (dB) Typ.	IP3 (dBm) Typ.	In	Out	Volt (V) Nom.	Current (mA) Max.
ZHL-6A	.0025	500	25	21	±1.2	+22	+10	9.5*	+34	1.8	2.0*	24	350

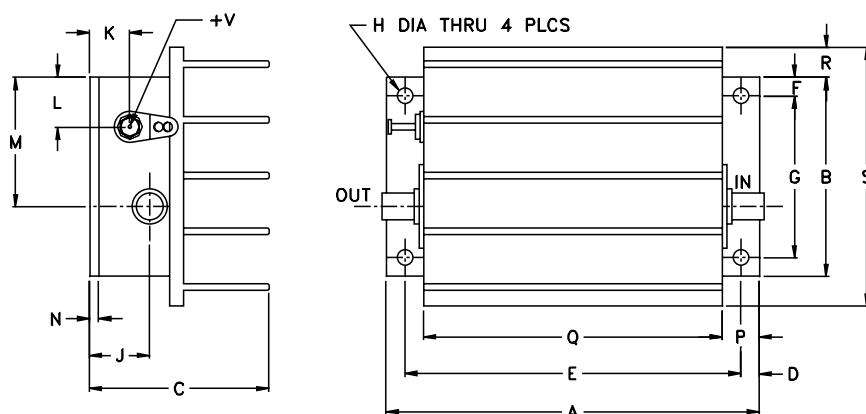
*Noise Figure continually increases from 70 MHz to 10 MHz by approximately 4dB; output VSWR 2.8:1 below 30 MHz

Open load is not recommended, potentially can cause damage. With no load derate max input power by 20 dB

Maximum Ratings

Operating Temperature	-20°C to 65°C
Storage Temperature	-55°C to 100°C
DC Voltage	+24.5V Max.

Outline Drawing



Outline Dimensions (inch/mm)

A	B	C	D	E	F	G	H	J
3.75	2.00	1.8	.19	3.375	.19	1.625	.144	.50
95.25	50.80	45.72	4.83	85.73	4.83	41.28	3.66	12.70
K	L	M	N	P	Q	R	S	T
.40	.50	1.30	.10	.38	3.00	.30	2.60	.80 g
10.16	12.70	33.02	2.54	9.65	76.20	7.62	66.04	20.32 ;

Typical Performance Data/Curves

ZHL-6A

FREQUENCY (MHz)	GAIN (dB)			DIRECTIVITY (dB)			VSWR (:1)		NOISE FIGURE (dB)	POUT at 1 dB COMPR. (dBm)
	23V	24V	24.5V	23V	24V	24.5V	IN	OUT		
0.0025	24.57	24.64	24.69	30.40	30.50	30.40	1.71	1.48	—	24.48
0.01	24.73	24.82	24.86	29.80	29.80	29.70	1.57	1.38	—	24.62
0.18	24.67	24.75	24.79	29.30	29.20	29.20	1.56	1.37	—	24.65
2.30	24.75	24.81	24.85	28.90	29.10	28.90	1.54	1.35	—	24.75
30.20	25.60	25.66	25.69	27.30	27.30	27.20	1.40	1.23	7.58	25.48
179.50	25.51	25.60	25.63	28.10	29.30	25.40	1.32	1.23	7.55	25.13
217.90	25.64	25.75	25.76	25.10	27.00	24.10	1.30	1.22	7.61	24.97
256.40	25.61	25.71	25.75	35.60	29.50	24.90	1.29	1.22	7.62	24.87
282.10	25.41	25.52	25.55	26.50	37.00	35.00	1.27	1.22	7.63	24.88
307.70	25.35	25.45	25.47	29.80	28.60	28.70	1.25	1.21	7.64	24.85
346.10	25.46	25.57	25.60	32.00	27.30	28.40	1.23	1.21	7.64	24.61
384.60	25.39	25.51	25.53	27.50	27.80	24.60	1.20	1.23	7.62	24.58
423.10	25.46	25.57	25.60	22.70	23.70	24.80	1.17	1.28	7.59	24.57
461.50	25.41	25.52	25.57	22.50	31.60	19.60	1.17	1.39	7.57	24.43
500.00	25.04	25.17	25.21	25.00	22.70	22.50	1.16	1.56	7.53	24.37

