

Coaxial Frequency Mixer

Level 10 (LO Power +10 dBm) 1400 to 1900 MHz

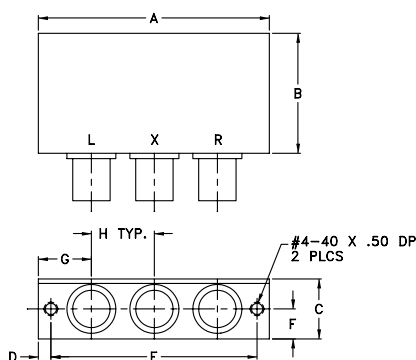
Maximum Ratings

Operating Temperature	-55°C to 100°C
Storage Temperature	-55°C to 100°C
RF Power	50mW
IF Current	40mA

Coaxial Connections

LO	L
RF	R
IF	X

Outline Drawing



Outline Dimensions (inch/mm)

A	B	C	D	E	F	G	H	wt
2.31	1.20	.60	.125	2.062	.30	.53	.63	grams
58.7	30.5	15.2	3.2	52.4	7.6	13.5	16.0	75.0

Features

- low conversion loss, 7.0 dB typ.
- good L-R isolation, 36 dB typ.
- rugged shielded case

Applications

- UHF
- GPS
- instrumentation
- defense communication

ZP-11ALH+
ZP-11ALH



BNC version shown

CASE STYLE: GG60

Connectors	Model	Price	Qty.
BNC	ZP-11ALH-(+)	\$45.95 ea.	(1-9)
SMA	ZP-11ALH-S(+)	\$50.95 ea.	(1-9)

+ RoHS compliant in accordance with EU Directive (2002/95/EC)

The +Suffix identifies RoHS Compliance. See our web site for RoHS Compliance methodologies and qualifications.

Electrical Specifications

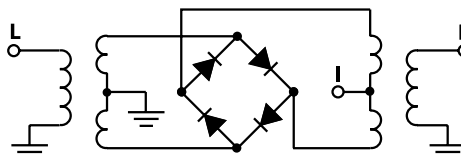
FREQUENCY (MHz)		CONVERSION LOSS (dB)			LO-RF ISOLATION (dB)		LO-IF ISOLATION (dB)	
LO/RF	IF	\bar{X}	σ	Total Range Max.	M		M	
f_L - f_U					Typ.	Min.	Typ.	Min.
1400-1900	40-500	7.0	0.20	8.6	36	20	28	15

1 dB COMP.: +5 dBm typ.

Typical Performance Data

Frequency (MHz)		Conversion Loss (dB)	Isolation L-R (dB)	Isolation L-I (dB)	VSWR RF Port (:1)	VSWR LO Port (:1)
RF	LO	LO +10dBm	LO +10dBm	LO +10dBm	LO +10dBm	LO +10dBm
1400.00	1350.00	7.64	32.04	35.28	1.80	2.08
1439.47	1389.47	7.59	31.29	34.81	1.65	2.12
1478.95	1428.95	7.56	31.02	36.41	1.52	2.12
1492.11	1442.11	7.57	31.07	37.32	1.47	2.12
1505.26	1455.26	7.55	31.07	37.67	1.40	2.12
1544.74	1494.74	7.38	30.74	37.43	1.28	2.17
1571.05	1521.05	7.27	30.53	37.11	1.19	2.18
1584.21	1534.21	7.24	30.45	37.02	1.15	2.18
1623.68	1573.68	7.15	30.47	36.30	1.12	2.18
1663.16	1613.16	6.99	30.12	35.15	1.07	2.22
1676.32	1626.32	7.00	29.89	34.75	1.05	2.22
1702.63	1652.63	7.01	29.56	33.82	1.05	2.21
1742.11	1692.11	6.97	29.37	32.60	1.06	2.25
1768.42	1718.42	6.96	29.26	31.76	1.11	2.24
1781.58	1731.58	7.02	29.13	31.35	1.14	2.23
1821.05	1771.05	7.06	28.58	30.17	1.21	2.24
1860.53	1810.53	7.10	28.45	29.36	1.28	2.28
1873.68	1823.68	7.10	28.39	29.09	1.30	2.30
1886.84	1836.84	7.08	28.35	28.81	1.32	2.30
1900.00	1850.00	7.10	28.25	28.47	1.34	2.30

Electrical Schematic



Performance Charts

ZP-11ALH+ ZP-11ALH

