

# Coaxial Frequency Mixer

Level 13 (LO Power +13 dBm) 0.15 to 400 MHz

**ZP-3MH+  
ZP-3MH**



BNC version shown  
CASE STYLE: GG60

## Maximum Ratings

Operating Temperature	-55°C to 100°C
Storage Temperature	-55°C to 100°C
RF Power	200mW
IF Current	40mA

## Coaxial Connections

LO	L
RF	R
IF	X

## Features

- low conversion loss, 5.0 dB typ.
- high L-R isolation, 46 dB typ., L-I, 42 dB typ.
- rugged shielded case

## Applications

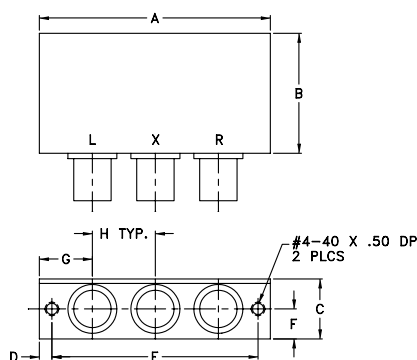
- VHF/UHF
- instrumentation

Connectors	Model	Price	Qty.
BNC	ZP-3MH-(+)	\$43.95 ea.	(1-9)
SMA	ZP-3MH-S(+)	\$48.95 ea.	(1-9)

**+ RoHS compliant in accordance  
with EU Directive (2002/95/EC)**

The +Suffix identifies RoHS Compliance. See our web site  
for RoHS Compliance methodologies and qualifications.

## Outline Drawing



## Outline Dimensions (inch)

A	B	C	D	E	F	G	H	wt
2.31	1.20	.60	.125	2.062	.30	.53	.63	grams
58.7	30.5	15.2	3.2	52.4	7.6	13.5	16.0	75.0

## Electrical Specifications

FREQUENCY (MHz)		CONVERSION LOSS (dB)				LO-RF ISOLATION (dB)						LO-IF ISOLATION (dB)					
LO/RF	IF	Mid-Band m		Total Range		L		M		U		L		M		U	
$f_L$ - $f_U$		$\bar{X}$	$\sigma$	Max.	Max.	Typ.	Min.	Typ.	Min.	Typ.	Min.	Typ.	Min.	Typ.	Min.	Typ.	Min.
0.15-400	DC-400	5.0	0.33	7.0	8.0	60	50	46	30	35	25	60	40	42	25	35	20

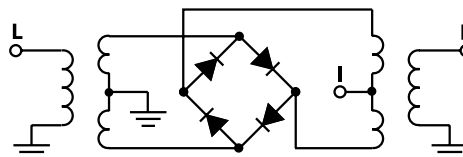
1 dB COMP.: +9 dBm typ.

L = low range [ $f_L$  to  $10 f_L$ ] M = mid range [ $10 f_L$  to  $f_U/2$ ] U = upper range [ $f_U/2$  to  $f_U$ ]  
m = mid band [ $2f_L$  to  $f_U/2$ ]

## Typical Performance Data

Frequency (MHz)		Conversion Loss (dB)	Isolation L-R (dB)	Isolation L-I (dB)	VSWR RF Port (:1)	VSWR LO Port (:1)
RF	LO	LO +13dBm	LO +13dBm	LO +13dBm	LO +13dBm	LO +13dBm
0.10	30.10	5.15	>73.00	60.91	1.33	1.72
1.00	31.00	4.57	>73.00	60.66	1.33	1.65
5.00	35.00	4.68	>73.00	60.53	1.33	1.74
10.00	40.00	4.73	>73.00	60.07	1.32	1.73
20.00	50.00	4.80	65.05	58.37	1.32	1.68
33.42	63.42	4.67	59.52	55.39	1.32	1.67
50.00	80.00	4.68	55.49	52.20	1.32	1.64
58.41	88.41	4.65	53.27	50.21	1.31	1.59
66.74	96.74	4.68	50.90	48.39	1.29	1.64
83.40	53.40	4.66	46.98	45.26	1.29	1.62
100.06	70.06	4.54	44.09	42.57	1.26	1.64
116.72	86.72	4.62	41.59	40.51	1.25	1.63
133.38	103.38	4.69	40.36	38.94	1.23	1.64
150.04	120.04	4.74	38.78	37.88	1.21	1.64
166.70	136.70	4.82	37.43	36.81	1.19	1.63
183.36	153.36	4.90	36.56	35.51	1.16	1.64
200.00	170.00	4.89	36.59	35.86	1.14	1.65
216.68	186.68	4.88	35.77	35.35	1.12	1.65
233.34	203.34	4.84	33.97	33.58	1.09	1.67
250.00	220.00	4.93	33.05	32.71	1.08	1.68

## Electrical Schematic



# Performance Charts

**ZP-3MH+  
ZP-3MH**

