

Coaxial

Power Splitter/Combiner

ZX10-4A-27+

4 Way-0° 50Ω

2225 to 2700 MHz

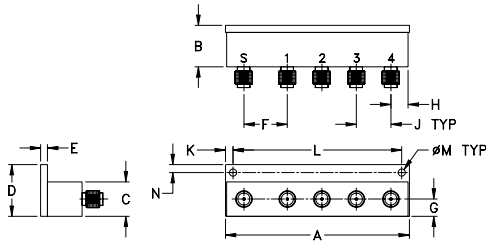
Maximum Ratings

Operating Temperature	-40°C to 85°C
Storage Temperature	-55°C to 100°C
Power Input (as a splitter)	2.5W max.
Internal Dissipation	0.125W max.

Coaxial Connections

SUM PORT	S
PORT 1	1
PORT 2	2
PORT 3	3
PORT 4	4

Outline Drawing



Outline Dimensions (inch)

A	B	C	D	E	F	G	H
2.67	.60	.50	.75	.10	.63	.25	.25
67.82	15.24	12.70	19.05	2.54	16.00	6.35	6.35
J	K	L	M	N	wt.		
.50	.11	2.445	.106	.12	grams		
12.70	2.79	62.10	2.69	3.05	65.0		

Features

- low insertion loss, 1.0 dB typ.
- high isolation, 20 dB typ.
- rigid unibody construction
- convenient for panel mount applications
- low cost
- protected by US patent 6,790,049
- very small size

Applications

- antenna arrays
- signal distribution
- test bench



CASE STYLE: GY1065

Connectors	Model	Price	Qty.
SMA	ZX10-4A-27-S+	\$38.95 ea.	(1-24)

+ RoHS compliant in accordance with EU Directive (2002/95/EC)

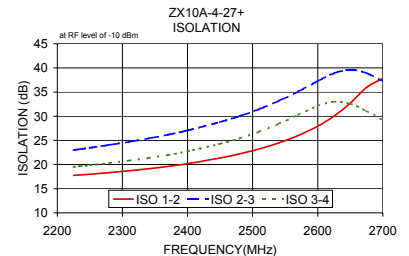
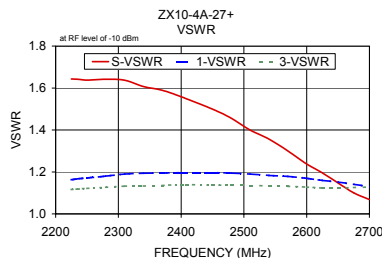
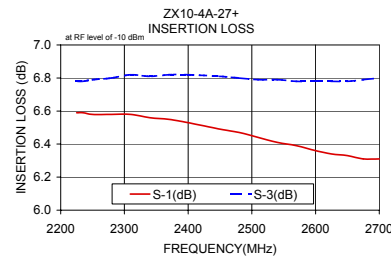
The +suffix has been added in order to identify RoHS Compliance. There has been no change to the model's material, form, fit, or function. See our web site for RoHS Compliance methodologies and qualifications.

Splitter Electrical Specifications (T_{AMB}=25°C)

FREQ. RANGE (MHz)	ISOLATION (dB)		INSERTION LOSS (dB) ABOVE 6 dB		PHASE UNBALANCE (Deg.)	AMPLITUDE UNBALANCE (dB)	INPUT VSWR (:1)	OUTPUT VSWR (:1)
	Typ.	Min.	Typ.	Max.				
2225-2700	20	16	1.0	1.3	6.0	0.9	1.4	1.25
2400-2600	25	18	0.8	1.3	5.0	0.8	1.4	1.25

Typical Performance Data

Freq. (MHz)	Insertion Loss (dB)				Amp. Unbal. (dB)	Isolation (dB)			Phase Unbal. (deg.)	VSWR S	VSWR 1	VSWR 2	VSWR 3	VSWR 4
	S-1	S-2	S-3	S-4		1-2	2-3	3-4						
2225.00	6.59	7.05	6.78	6.92	0.46	17.75	23.01	19.54	1.51	1.64	1.16	1.15	1.12	1.20
2235.00	6.59	7.04	6.78	6.92	0.46	17.85	23.19	19.67	1.52	1.64	1.17	1.15	1.12	1.20
2250.00	6.58	7.04	6.79	6.93	0.46	18.00	23.47	19.87	1.54	1.64	1.17	1.15	1.12	1.19
2280.00	6.58	7.05	6.80	6.96	0.46	18.33	24.05	20.30	1.60	1.64	1.18	1.17	1.13	1.22
2310.00	6.58	7.04	6.82	6.98	0.46	18.71	24.70	20.80	1.63	1.64	1.19	1.18	1.13	1.23
2340.00	6.56	7.02	6.81	6.98	0.46	19.14	25.40	21.35	1.65	1.61	1.19	1.18	1.13	1.21
2370.00	6.55	7.01	6.82	6.99	0.46	19.62	26.18	21.99	1.69	1.59	1.19	1.20	1.14	1.24
2400.00	6.53	6.99	6.82	7.00	0.47	20.18	27.07	22.75	1.73	1.56	1.20	1.19	1.14	1.24
2450.00	6.49	6.95	6.81	7.00	0.51	21.34	28.79	24.28	1.78	1.50	1.20	1.21	1.14	1.24
2480.00	6.47	6.91	6.80	7.01	0.54	22.20	30.03	25.43	1.82	1.46	1.19	1.21	1.14	1.26
2510.00	6.44	6.88	6.79	7.00	0.56	23.22	31.45	26.79	1.85	1.40	1.19	1.20	1.14	1.23
2540.00	6.41	6.85	6.79	7.01	0.59	24.46	33.15	28.44	1.89	1.36	1.18	1.22	1.13	1.24
2570.00	6.39	6.81	6.78	7.01	0.62	25.99	35.09	30.29	1.95	1.30	1.18	1.21	1.13	1.25
2600.00	6.36	6.78	6.78	7.01	0.65	27.93	37.27	32.13	2.01	1.24	1.17	1.20	1.13	1.22
2625.00	6.34	6.76	6.78	7.02	0.68	30.03	38.89	32.98	2.06	1.20	1.16	1.20	1.12	1.24
2650.00	6.33	6.73	6.78	7.04	0.71	32.71	39.61	32.56	2.12	1.15	1.15	1.19	1.12	1.26
2675.00	6.31	6.72	6.79	7.05	0.74	35.97	38.91	31.07	2.15	1.10	1.14	1.18	1.13	1.24
2700.00	6.31	6.70	6.80	7.07	0.77	37.81	37.28	29.20	2.17	1.07	1.13	1.19	1.13	1.25



electrical schematic



INTERNET <http://www.minicircuits.com>

P.O. Box 350166, Brooklyn, New York 11235-0003 (718) 934-4500 Fax (718) 332-4661

Distribution Centers NORTH AMERICA 800-654-7949 • 417-335-5935 • Fax 417-335-5945 • EUROPE 44-1252-832600 • Fax 44-1252-837010

Mini-Circuits ISO 9001 & ISO 14001 Certified

REV. OR
M95684
ZX10-4A-27+
ED-11601/5
AD/LC/CP
051228