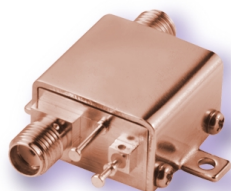


# High Isolation Amplifiers

50Ω, 0.5 to 5.9 GHz

**NEW!**  
**ZX60-M SERIES**



CASE STYLE: GC957

## Features

- from 2.8V to 5V operation
- wide bandwidth, 0.5 to 2.5 GHz and 1.5 to 5.9 GHz
- high active directivity\*, 20 dB typ.
- output power, up to +19.2 dBm typ.
- patent pending

## Applications

- buffer amplifier
- LO amplifiers for mixers
- cellular
- PCN

## Electrical Specifications ( $T_{AMB}=25^{\circ}\text{C}$ )

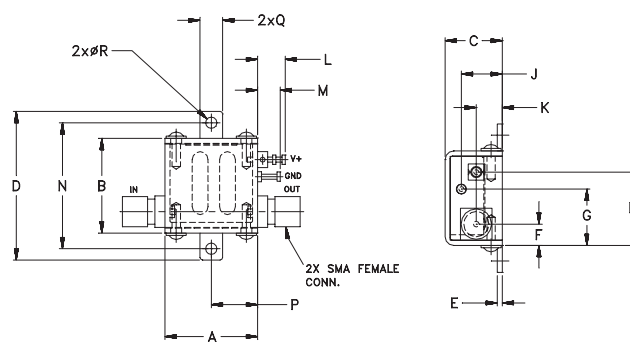
MODEL NO.	FREQ. (GHz)	DC VOLTS (V)	GAIN, dB Typical							MAXIMUM POWER (dBm)		DYNAMIC RANGE			VSWR (:1) Typ.		ACTIVE* DIRECTIVITY (dB)	DC OPERATING CURRENT @ Pin 3 (mA)		PRICE \$
			over frequency, GHz						Min. at 2 GHz	Output (1 dB Comp.) Typ.		NF (dB) Typ.	IP3 (dBm) Typ.		In	Out		Typ.	Typ.	
	0.5	1.0	1.5	2.0	2.5	f <sub>L</sub> - f <sub>U</sub>	f <sub>L</sub>	f <sub>U</sub>		at 1 GHz	at 1 GHz		at 2 GHz	Typ.			Typ.			Max.
	Qty. (1-9)																			
ZX60-2510M	0.5-2.5	5.0	10.3	12.7	12.9	12.5	12.1	10.4	17.1	15.1	5.4	28.8	26.5	1.5	1.6	20	69	95	59.95	
		2.8	9.1	11.2	11.2	10.7	10.3	—	13.7	13.0	5.4	24.9	23.4	1.5	1.6	20	63	—		
ZX60-2514M	0.5-2.5	5.0	14.1	16.5	16.4	15.7	14.1	14.0	18.3	16.2	4.8	30.3	27.8	1.5	1.7	20	75	90	59.95	
		2.8	12.9	14.9	14.8	14.3	13.0	—	14.3	14.2	4.9	26.0	24.9	1.5	1.7	20	67	—		
ZX60-2522M	0.5-2.5	5.0	18.7	22.5	23.5	23.3	21.7	21.5	18.0	15.8	3.0	30.6	28.8	1.5	1.7	17	86	95	59.95	
		2.8	17.2	20.2	20.6	20.6	20.0	—	14.4	14.2	3.0	25.7	25.6	1.4	1.8	20	80	—		
ZX60-5916M	1.5-5.9	5.0	over frequency, GHz						14.5	15.7	2 GHz	2 GHz	5.9GHz	2.2	1.2	20	73	96	59.95	
			1.5	2.0	3.5	5.0	5.9	15.5												
		2.8	13.6	14.6	14.7	16.5	11.5	—	11.5	12.8	7.0	23.5	23.5	2.5	1.4	25	66	—		

\*active directivity=isolation-gain

## Maximum Ratings

Operating Temperature	-40°C to +85°C
Storage Temperature	-55°C to +100°C
DC Voltage	7V
Input Power (no damage)	10 dBm
Power	500mW

## Outline Drawing

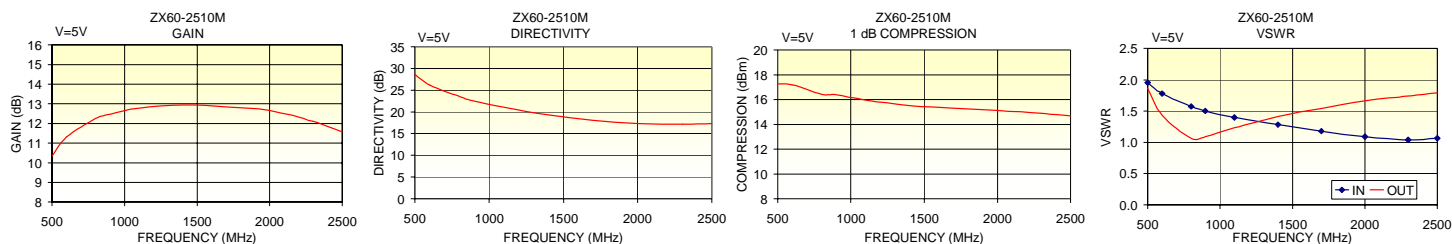


## Outline Dimensions (inch/mm)

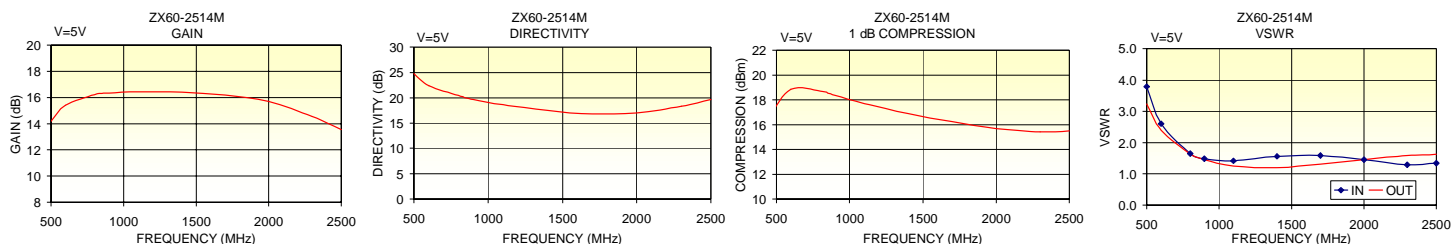
A	B	C	D	E	F	G	H	J
0.74 18.8	.75 19.1	.46 11.6	1.18 30.0	.04 1.0	.17 4.3	.45 11.4	.59 14.9	.33 8.3
K	L	M	N	P	Q	R	wt. grams	
.21 5.3	.22 5.6	.18 4.6	1.00 25.4	.37 9.4	.18 4.6	.09 2.3	23.0	

REV. A  
M93259  
ZX60-2510M EDR-6123  
ZX60-2514M EDR-6137  
ZX60-5916M EDR-6128  
ZX60-2522M EDR-6127  
RVN/DCP  
040706  
page 1 of 2

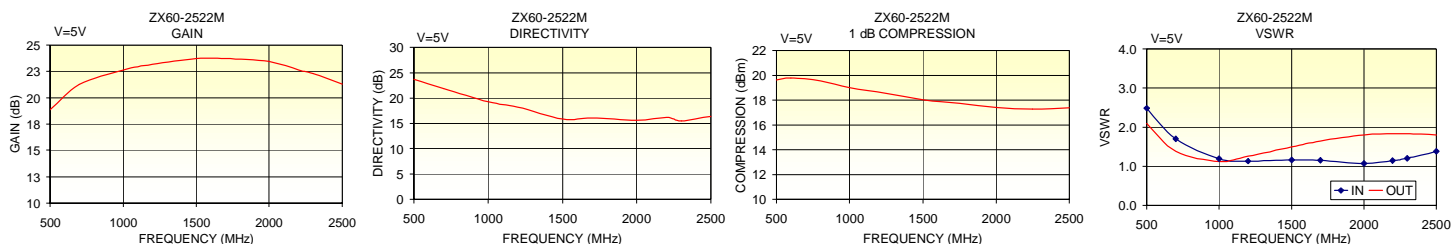
## ZX60-2510M



## ZX60-2514M



## ZX60-2522M



## ZX60-5916M

