

The PDSP16318/A contains two independent 20-bit Adder/Subtractors combined with accumulator registers and shift structures. The four port architecture permits full 20MHz throughout in FFT and filter applications.

Two PDSP16318As combined with a single PDSP16112A Complex Multiplier provide a complete arithmetic solution for a Radix 2 DIT FFT Butterfly. A new complex Butterfly result can be generated every 50ns allowing 1K complex FFTs to be executed in 256 μ s.

FEATURES

- Full 20MHz Throughout in FFT Applications
- Four Independent 16-bit I/O Ports
- 20-bit Addition or Accumulation
- Fully Compatible with PDSP16112 Complex Multiplier
- On Chip Shift Structures for Result Scaling
- Overflow Detection
- Independent Three-State Outputs and Clock Enables for 2 Port 20MHz Operation
- 1.4 micron CMOS
- 500mW Maximum Power Dissipation
- 100 CQFP package

APPLICATIONS

- High speed Complex FFT or DFTs
- Complex Finite Impulse Response (FIR) Filtering
- Complex Conjugation
- Complex Correlation/Convolution

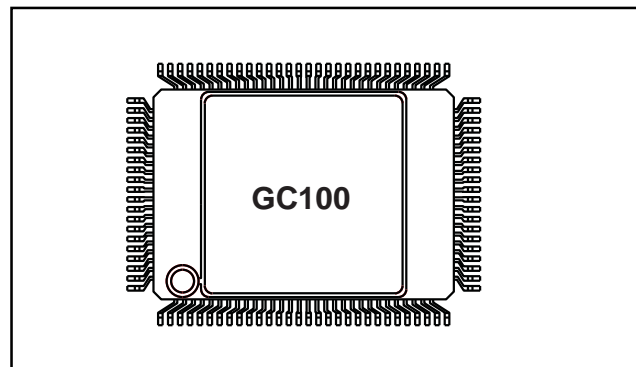


Fig.1 Pin connections - Top view (GC100)

ASSOCIATED PRODUCTS

- PDSP16112** 16 x 12 Complex Multiplier
- PDSP16116** 16 x 16 Complex Multiplier
- PDSP1601** ALU and Barrel Shifter
- PDSP16330** Pythagoras Processor

ORDERING INFORMATION

Industrial (-40°C to +85°C)

PDSP16318A/IG/GC1R (20MHz - QFP)

Military (-55°C to +125°C)

PDSP16318/MC/GC1R (10MHz - QFP
MIL STD 883C Screened)

N.B. Further details of the Military grade part are available in a separate datasheet

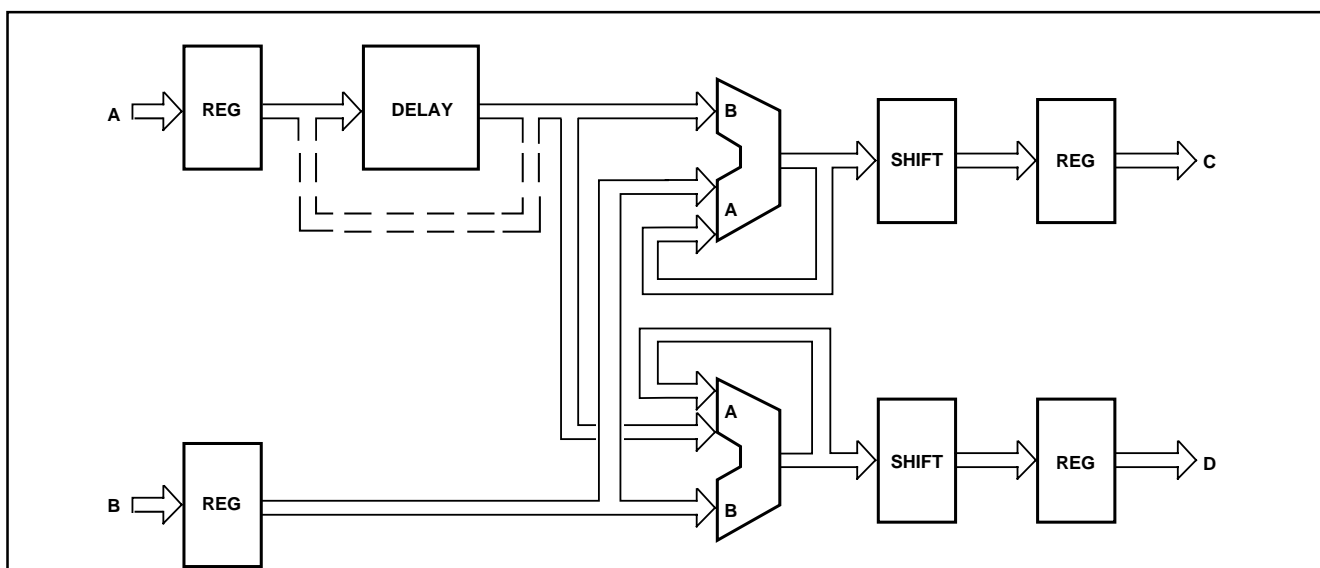


Fig. 2 PDSP16318 simplified block diagram

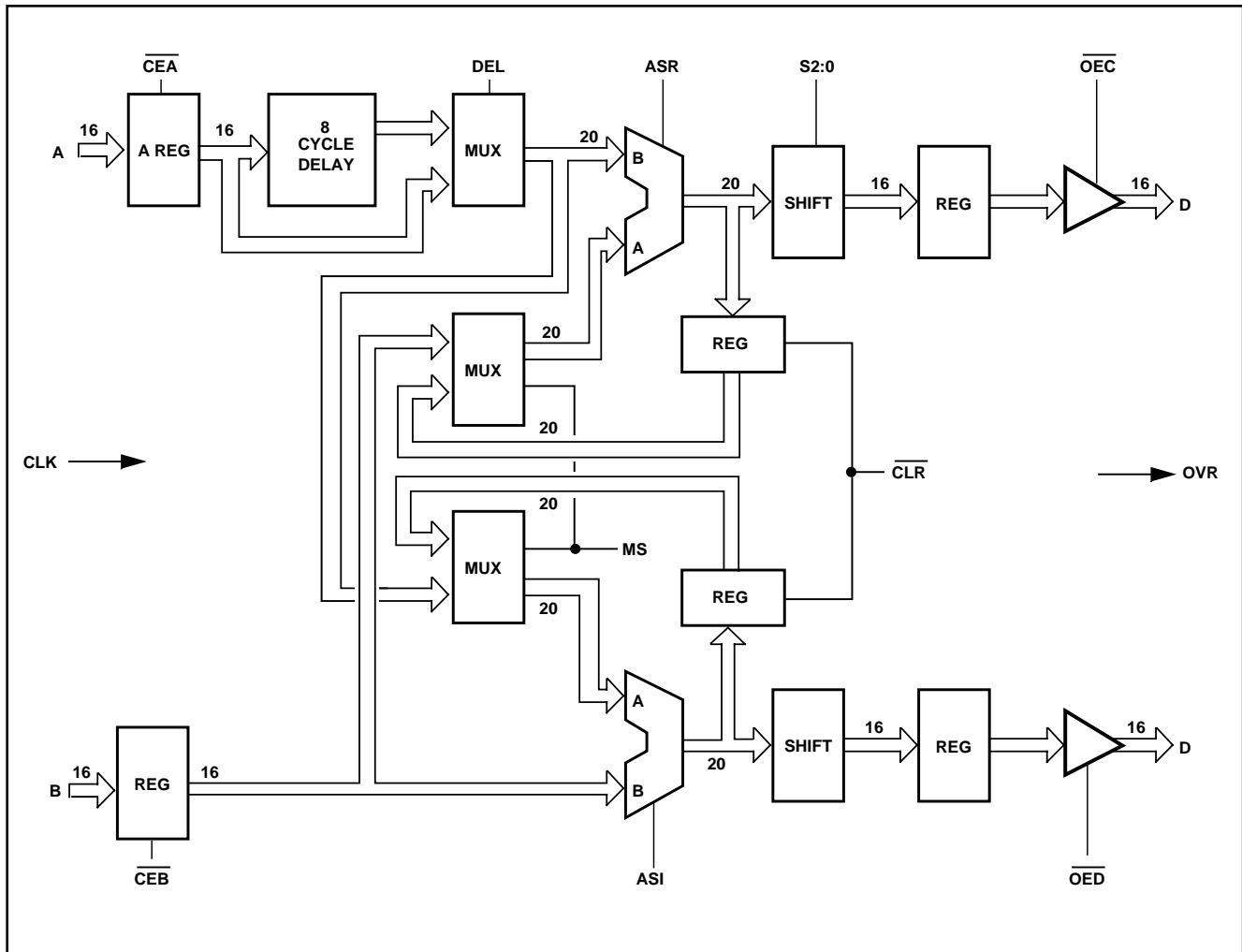


Fig. 3 Block diagram

FUNCTIONAL DESCRIPTION

The PDSP16318 is a Dual 20-bit Adder/Subtractor configured to support Complex Arithmetic. The device may be used with each of the adders allocated to real or imaginary data (e.g. Complex Conjugation), the entire device allocated to Real or Imaginary Data (e.g. Radix 2 Butterflies) or each of the adders configured as accumulators and allocated to real or imaginary data (Complex Filters). Each of these modes ensures that a full 20MHz throughput is maintained through both adders, the first and last mode illustrating true Complex operation, where both real and imaginary data is handled by the single device.

Both Adder/Subtractors may be controlled independently via the ASR and ASI inputs. These controls permit $A + B$, $A - B$, $B - A$ or pass A operations, where the A input to the Adder is derived from the input multiplexer. The $\overline{\text{CLR}}$ control line allows the clearing of both accumulator registers. The two multiplexers may be controlled via the MS inputs, to select either new input data, or fed-back data from

the accumulator registers. The PDSP16318 contains an 8-cycle deskew register selected via the DEL control. This deskew register is used in FFT applications to ensure correct phasing of data that has not passed through the PDSP16112 Complex Multiplier.

The 16-bit outputs from the PDSP16318 are derived from the 20-bit result generated by the Adders. The three bit S2:0 input selects eight different shifted output formats ranging from the most significant 16 bits of the 20-bit data, to the least significant 13 bits of the 20-bit data. In this mode the 14th, 15th and 16th bits of the output are set to zero. The shift selected is applied to both adder outputs, and determines the function of the OVR flag. The OVR flag becomes active when either of the two adders produces a result that has more significant digits than the MSB of the 16-bit output from the device. In this manner all cases when invalid data appears on the output are flagged.

| Symbol | Type | Description |
|-------------------------|--------|--|
| A15:0 | Input | Data presented to this input is loaded into the input register on the rising edge of CLK. A15 is the MSB. |
| B15:0 | Input | Data presented to this input is loaded into the input register on the rising edge of CLK. B15 is the MSB and has the same weighting as A15. |
| C15:0 | Output | New data appears on this output after the rising edge of CLK. C15 is the MSB. |
| D15:0 | Output | New data appears on this output after the rising edge of CLK. C15 is the MSB. |
| CLK | Input | Common Clock to all internal registers |
| $\overline{\text{CEA}}$ | Input | Clock enable: when low the clock to the A input register is enabled. |
| $\overline{\text{CEB}}$ | Input | Clock enable: when low the clock to the B input register is enabled. |
| $\overline{\text{OEC}}$ | Input | Output enable: Asynchronous 3-state output control: The C outputs are in a high impedance state when this input is high. |
| $\overline{\text{OED}}$ | Input | Output enable: Asynchronous 3-state output control: The D outputs are in a high impedance state when this input is high. |
| OVR | Output | Overflow flag: This flag will go high in any cycle during which either the output data overflows the number range selected or either of the adder results overflow. A new OVR appears after the rising edge of the CLK. |
| ASR1:0 | Input | Add/subtract Real: Control input for the 'Real' adder. This input is latched by the rising edge of clock. |
| ASI1:0 | Input | Add/subtract Imag: Control input for the 'Imag' adder. This input is latched by the rising edge of clock. |
| $\overline{\text{CLR}}$ | Input | Accumulator Clear: Common accumulator clear for both Adder/Subtractor units. This input is latched by the rising edge of CLK. |
| MS | Input | Mux select: Control input for both adder multiplexers. This input is latched by the rising edge of CLK. When high the feedback path is selected. |
| S2:0 | Input | Scaling control: This input selects the 16-bit field from the 20-bit adder result that is routed to the outputs. This input is latched by the rising edge of CLK. |
| DEL | Input | Delay Control: This input selects the delayed input to the real adder for operations involving the PDSP16112. This input is latched by the rising edge of CLK. |
| VCC | Power | +5V supply: Both Vcc pins must be connected. |
| GND | Ground | 0V supply: Both GND pins must be connected. |

PDSP16318/16318A

| GC pin | Function | GC pin | Function | GC pin | Function | GC pin | Function |
|--------|----------|--------|-------------------------|--------|-------------------------|--------|-------------------------|
| 77 | D7 | 6 | C7 | 31 | A1 | 56 | B10 |
| 82 | D8 | 7 | C6 | 32 | A2 | 57 | B9 |
| 83 | D9 | 8 | C5 | 33 | A3 | 58 | B8 |
| 84 | D10 | 9 | C4 | 34 | A4 | 59 | B7 |
| 85 | GND | 10 | C3 | 35 | A5 | 60 | B6 |
| 86 | VCC | 11 | C2 | 36 | A6 | 61 | B5 |
| 87 | D11 | 12 | C1 | 37 | A7 | 62 | B4 |
| 88 | D12 | 13 | C0 | 38 | A8 | 63 | B3 |
| 89 | D13 | 14 | $\overline{\text{OED}}$ | 39 | A9 | 64 | B2 |
| 90 | D14 | 15 | $\overline{\text{OEC}}$ | 40 | A10 | 65 | B1 |
| 91 | D15 | 16 | S2 | 41 | A11 | 66 | B0 |
| 92 | C15 | 17 | S1 | 42 | A12 | 67 | CLK |
| 93 | C14 | 18 | S0 | 43 | A13 | 68 | $\overline{\text{CEB}}$ |
| 94 | C13 | 19 | MS | 44 | A14 | 69 | OVR |
| 95 | C12 | 20 | ASI1 | 45 | A15 | 70 | D0 |
| 96 | VCC | 21 | ASI0 | 46 | $\overline{\text{CEA}}$ | 71 | D1 |
| 97 | GND | 22 | $\overline{\text{DEL}}$ | 47 | B15 | 72 | D2 |
| 98 | C11 | 23 | $\overline{\text{CLR}}$ | 48 | B14 | 73 | D3 |
| 99 | C10 | 24 | ASR1 | 49 | B13 | 74 | D4 |
| 100 | C9 | 25 | ASR0 | 50 | B12 | 75 | D5 |
| 5 | C8 | 26 | A0 | 51 | B11 | 76 | D6 |

Device Pinout for ceramic QFP (GC100)

| ASR or ASI ASX1 ASX0 | | ALU Function |
|-------------------------|---|--------------|
| 0 | 0 | A + B |
| 0 | 1 | A |
| 1 | 0 | A - B |
| 1 | 1 | B - A |

| DEL | Delay Mux Control |
|-----|----------------------|
| 0 | A port input |
| 1 | Delayed A port input |

| MS | Real and Imag' Mux Control |
|----|-----------------------------|
| 0 | B port input/Del mux output |
| 1 | C accumulator/D accumulator |

| S2:0 | | | Adder result | | | | | | | | | | | | | | | | | | | | |
|------|----|----|--------------|----|----|----|----|----|----|----|----|----|----|----|----|----|---|---|---|---|---|---|---|
| S2 | S1 | S0 | 19 | 18 | 17 | 16 | 15 | 14 | 13 | 12 | 11 | 10 | 9 | 8 | 7 | 6 | 5 | 4 | 3 | 2 | 1 | 0 | |
| 0 | 0 | 0 | 15 | 14 | 13 | 12 | 11 | 10 | 9 | 8 | 7 | 6 | 5 | 4 | 3 | 2 | 1 | 0 | | | | | |
| 0 | 0 | 1 | | | 15 | 14 | 13 | 12 | 11 | 10 | 9 | 8 | 7 | 6 | 5 | 4 | 3 | 2 | 1 | 0 | | | |
| 0 | 1 | 0 | | | | 15 | 14 | 13 | 12 | 11 | 10 | 9 | 8 | 7 | 6 | 5 | 4 | 3 | 2 | 1 | 0 | | |
| 0 | 1 | 1 | | | | | 15 | 14 | 13 | 12 | 11 | 10 | 9 | 8 | 7 | 6 | 5 | 4 | 3 | 2 | 1 | 0 | |
| 1 | 0 | 0 | | | | | | 15 | 14 | 13 | 12 | 11 | 10 | 9 | 8 | 7 | 6 | 5 | 4 | 3 | 2 | 1 | 0 |
| 1 | 0 | 1 | | | | | | | 15 | 14 | 13 | 12 | 11 | 10 | 9 | 8 | 7 | 6 | 5 | 4 | 3 | 2 | 1 |
| 1 | 1 | 0 | | | | | | | | 15 | 14 | 13 | 12 | 11 | 10 | 9 | 8 | 7 | 6 | 5 | 4 | 3 | 2 |
| 1 | 1 | 1 | | | | | | | | | 15 | 14 | 13 | 12 | 11 | 10 | 9 | 8 | 7 | 6 | 5 | 4 | 3 |

NOTE

This table shows the portion of the adder result passed to the D15:0 and C15:0 outputs. Where fewer than 16 adder bits are selected the output data is padded with zeros.

ABSOLUTE MAXIMUM RATINGS (Note 1)

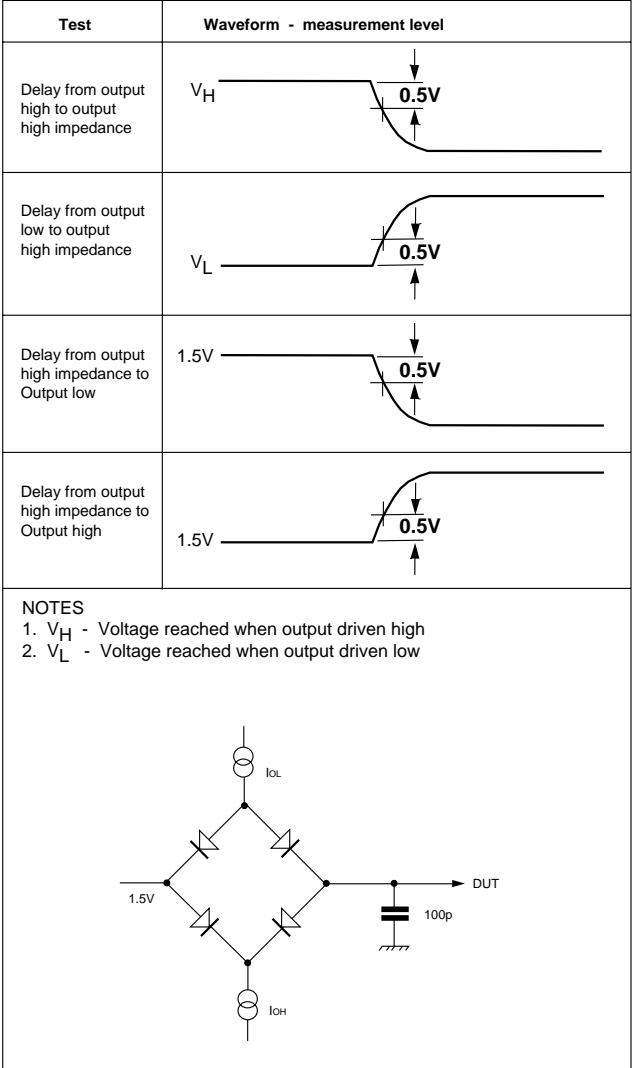
| | |
|--|--------------------------|
| Supply voltage V_{CC} | -0.5V to 7.0V |
| Input voltage V_{IN} | -0.9V to $V_{CC} + 0.9V$ |
| Output voltage V_{OUT} | -0.9V to $V_{CC} + 0.9V$ |
| Clamp diode current per pin I_k (see Note 2) | 18mA |
| Static discharge voltage (HMB) V_{STAT} | 500V |
| Storage temperature range T_S | -65°C to +150°C |
| Ambient temperature with power applied T_{amb} | |
| Industrial | -40°C to +85°C |
| Military | -55°C to +125°C |
| Junction temperature | 150°C |
| Package power dissipation P_{TOT} | 1000mW |

NOTES

- 1. Exceeding these ratings may cause permanent damage. Functional operation under these conditions is not implied.
- 2. Maximum dissipation or 1 second should not be exceeded, only one output to be tested at any one time.
- 3. Exposure to absolute maximum ratings for extended periods may affect device reliability.

THERMAL CHARACTERISTICS

| | | |
|--------------|--------------------|--------------------|
| Package Type | θ_{JC} °C/W | θ_{JA} °C/W |
| GC | 12 | 35 |



PDSP16318/16318A

ELECTRICAL CHARACTERISTICS

Test conditions (unless otherwise stated):

T_{amb} (Commercial) = 0°C to +70°C, $V_{CC} = 5.0V \pm 5\%$, GND = 0V

T_{amb} (Industrial) = -40°C to +85°C, $V_{CC} = 5.0V \pm 10\%$, GND = 0V

T_{amb} (Military) = -55°C to +125°C, $V_{CC} = 5.0V \pm 10\%$, GND = 0V

STATIC CHARACTERISTICS

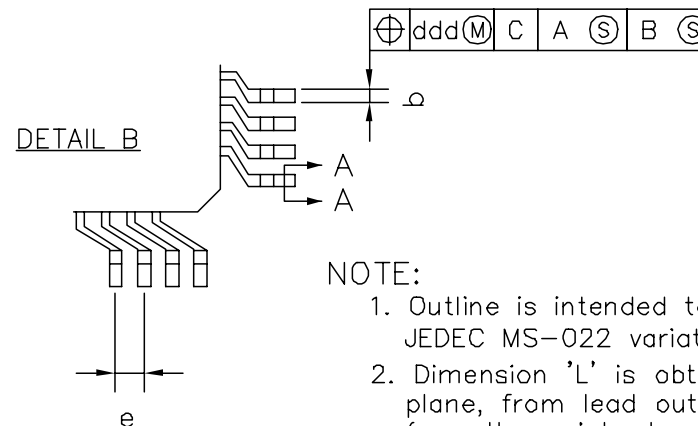
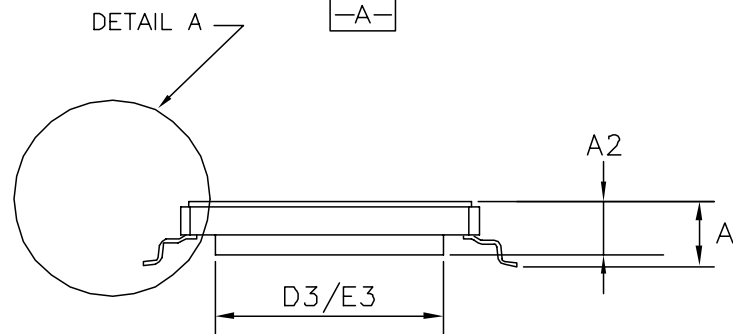
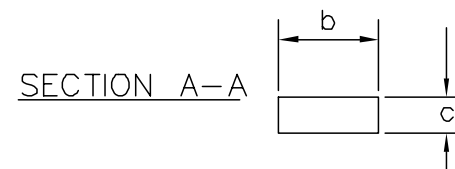
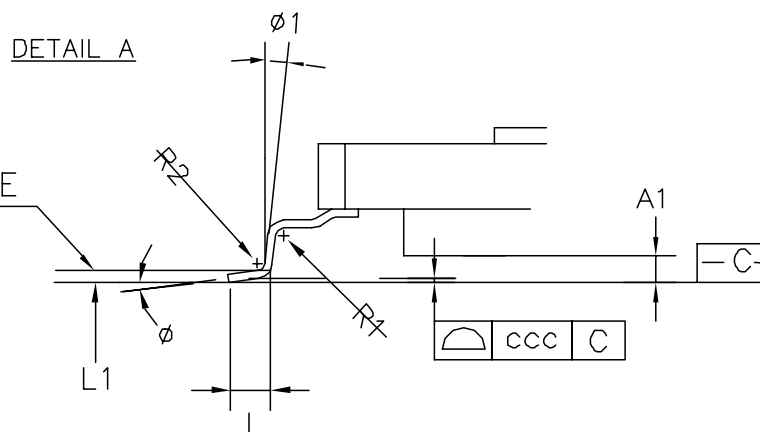
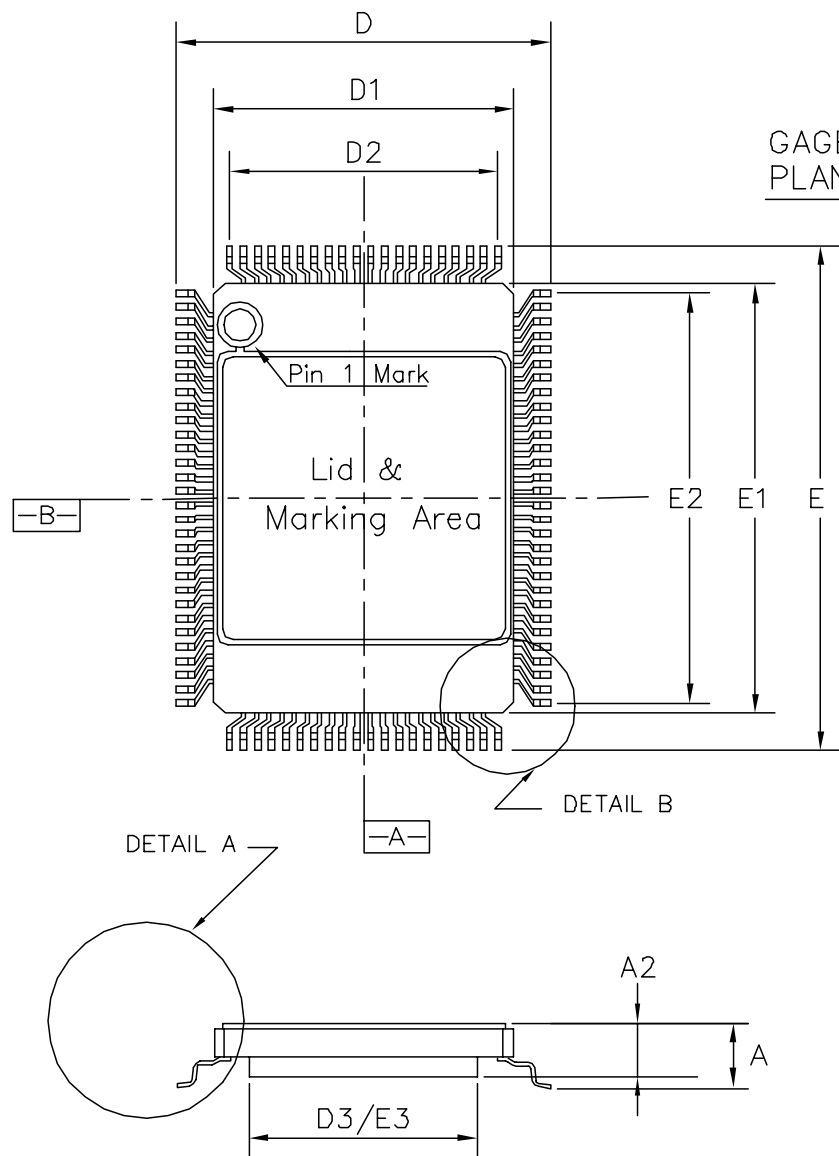
| Characteristic | Symbol | Value | | | Units | Conditions |
|------------------------|----------|-------|------|------|---------|--|
| | | Min. | Typ. | Max. | | |
| Output high voltage | V_{OH} | 2.4 | | - | V | $I_{OH} = 3.2mA$ $I_{OL} = -3.2mA$ |
| Output low voltage | V_{OL} | - | | 0.4 | V | |
| Input high voltage | V_{IH} | 3.5 | | - | V | |
| Input low voltage | V_{IL} | - | | 0.5 | V | |
| Input leakage current | I_{IL} | -10 | | +10 | μA | $GND \leq V_{IN} \leq V_{CC}$ $GND \leq V_{OUT} \leq V_{CC}$ $V_{CC} = \text{Max}$ |
| Output leakage current | I_{OZ} | -50 | - | +50 | μA | |
| Output SC current | I_{OS} | 20 | - | 200 | mA | |
| Input capacitance | C_{IN} | - | 9 | - | pF | |

SWITCHING CHARACTERISTICS

| Characteristic | Value Industrial | | Value Military | | Units | Conditions |
|---|------------------|------|----------------|------|-------|---|
| | PDSP16318A | | PDSP16318 | | | |
| | Min. | Max. | Min. | Max. | | |
| Clock period | 50 | - | 100 | - | ns | 2 x LSTTL + 20pF 2 x LSTTL + 20pF 2 x LSTTL + 20pF 2 x LSTTL + 20pF V _{CC} = max, TTL input levels Outputs unloaded, f _{CLK} = max |
| Clock High Time | 15 | - | 20 | - | ns | |
| Clock Low Time | 15 | - | 20 | - | ns | |
| A15:0, B15:0 setup to clock rising edge | 5 | - | 8 | - | ns | |
| A15:0, B15:0 hold after clock rising edge | 2 | - | 2 | - | ns | |
| MS, S2:0, ASI setup to clock rising edge | 10 | - | 10 | - | ns | |
| DEL, ASR, \overline{CLR} setup to clock rising edge | 5 | - | 8 | - | ns | |
| DEL, ASR, \overline{CLR} , MS, S2:0, ASI hold after clock rising edge | 2 | - | 2 | - | ns | |
| \overline{CEA} , \overline{CEB} setup to clock falling edge | 2 | - | 2 | - | ns | |
| \overline{CEA} , \overline{CEB} hold after clock rising edge | 8 | - | 8 | - | ns | |
| Clock rising edge to OVR, C15:0, D15:0 | 5 | 30 | 5 | 40 | ns | |
| $\overline{OEC}/\overline{OED}$ low to C15:0/D15:0 high data valid | - | 30 | - | 40 | ns | |
| $\overline{OEC}/\overline{OED}$ low to C15:0/D15:0 low data valid | - | 30 | - | 40 | ns | |
| $\overline{OEC}/\overline{OED}$ high to C15:0/D15:0 high impedance | - | 30 | - | 40 | ns | |
| V _{CC} current | - | 110 | - | 70 | mA | |
| V _{CC} current | - | 60 | - | 30 | mA | V _{CC} = max, CMOS input levels Outputs unloaded, f _{CLK} = max |

NOTES

1. LSTTL is equivalent to $I_{OH} = 20$ microamps, $I_{OL} = -0.4mA$
2. Current is defined as negative into the device
3. CMOS input levels are defined as:
 $V_{IL} = 0.5$
 $V_{IH} = V_{DD} - 0.5$



NOTE:

- Outline is intended to be footprint compatible with JEDEC MS-022 variation GC-1
- Dimension 'L' is obtained by measuring, in a horizontal plane, from lead outer end, to a perpendicular dropped from the point where 'Gauge Plane' crosses lead inner edge.

| CONTROL DIMENSIONS (mm) | | | |
|---------------------------|------------|------|------|
| SYMBOL | MIN. | NOM. | MAX. |
| A | | | 3.40 |
| A1 | 0.25 | | 0.50 |
| A2 | 2.19 | 2.50 | 2.90 |
| D | 17.20BSC. | | |
| D1 | 14.00BSC. | | |
| D2 | 12.35 BSC. | | |
| D3 | 10.50BSC. | | |
| E | 23.20BSC. | | |
| E1 | 20.00BSC. | | |
| E2 | 18.85BSC. | | |
| E3 | 16.50BSC. | | |
| e | 0.65 BSC. | | |
| b | 0.22 | | 0.40 |
| c | 0.11 | | 0.23 |
| R1 | 0.13 | | |
| R2 | 0.13 | | 0.3 |
| ϕ | 0° | | 7° |
| $\phi 1$ | 0° | | |
| L | 0.73 | | 1.03 |
| L1 | 0.25BASIC | | |
| ccc | | 0.10 | |
| ddd | | 0.13 | |

© Mitel 1999 All rights reserved.

| | | | | | |
|--------|---------|---------|--|--|--|
| ISSUE | 1 | 2 | | | |
| ACN | 204994 | 207453 | | | |
| DATE | 11AUG98 | 16SEP99 | | | |
| APPRD. | | | | | |

MITEL SEMICONDUCTOR

ORIGINATING SITE: Swindon

Title: Customer Outline Drawing for
100 Lead CQFP (GC)
(14x20x2.5)mm, Body+3.2 mm

Drawing Number

GPD00557



<http://www.mitelsemi.com>

World Headquarters - Canada

Tel: +1 (613) 592 2122

Fax: +1 (613) 592 6909

North America

Tel: +1 (770) 486 0194

Fax: +1 (770) 631 8213

Asia/Pacific

Tel: +65 333 6193

Fax: +65 333 6192

**Europe, Middle East,
and Africa (EMEA)**

Tel: +44 (0) 1793 518528

Fax: +44 (0) 1793 518581

Information relating to products and services furnished herein by Mitel Corporation or its subsidiaries (collectively "Mitel") is believed to be reliable. However, Mitel assumes no liability for errors that may appear in this publication, or for liability otherwise arising from the application or use of any such information, product or service or for any infringement of patents or other intellectual property rights owned by third parties which may result from such application or use. Neither the supply of such information or purchase of product or service conveys any license, either express or implied, under patents or other intellectual property rights owned by Mitel or licensed from third parties by Mitel, whatsoever. Purchasers of products are also hereby notified that the use of product in certain ways or in combination with Mitel, or non-Mitel furnished goods or services may infringe patents or other intellectual property rights owned by Mitel.

This publication is issued to provide information only and (unless agreed by Mitel in writing) may not be used, applied or reproduced for any purpose nor form part of any order or contract nor to be regarded as a representation relating to the products or services concerned. The products, their specifications, services and other information appearing in this publication are subject to change by Mitel without notice. No warranty or guarantee express or implied is made regarding the capability, performance or suitability of any product or service. Information concerning possible methods of use is provided as a guide only and does not constitute any guarantee that such methods of use will be satisfactory in a specific piece of equipment. It is the user's responsibility to fully determine the performance and suitability of any equipment using such information and to ensure that any publication or data used is up to date and has not been superseded. Manufacturing does not necessarily include testing of all functions or parameters. These products are not suitable for use in any medical products whose failure to perform may result in significant injury or death to the user. All products and materials are sold and services provided subject to Mitel's conditions of sale which are available on request.

M Mitel (design) and ST-BUS are registered trademarks of MITEL Corporation
Mitel Semiconductor is an ISO 9001 Registered Company
Copyright 1999 MITEL Corporation
All Rights Reserved
Printed in CANADA

TECHNICAL DOCUMENTATION - NOT FOR RESALE