

Silicon Controlled Rectifier Reverse Blocking Triode Thyristors

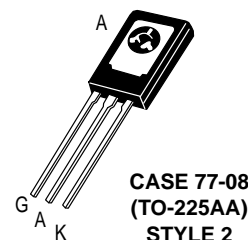
... Glassivated PNP devices designed for high volume consumer applications such as temperature, light, and speed control; process and remote control, and warning systems where reliability of operation is important.

- Glassivated Surface for Reliability and Uniformity
- Power Rated at Economical Prices
- Practical Level Triggering and Holding Characteristics
- Flat, Rugged, Thermopad Construction for Low Thermal Resistance, High Heat Dissipation and Durability

**C106
Series***

*Motorola preferred devices

**SCRs
4 AMPERES RMS
50 thru 600 VOLTS**



MAXIMUM RATINGS ($T_J = 25^\circ\text{C}$ unless otherwise noted.)

Rating	Symbol	Value	Unit
Peak Repetitive Forward and Reverse Blocking Voltage ⁽¹⁾ ($R_{GK} = 1\text{ k}\Omega$) ($T_C = -40^\circ$ to 110°C) C106F C106A C106B C106D C106M	V_{DRM} or V_{RRM}	50 100 200 400 600	Volts
RMS Forward Current (All Conduction Angles)	$I_T(\text{RMS})$	4	Amps
Average Forward Current ($T_A = 30^\circ\text{C}$)	$I_T(\text{AV})$	2.55	Amps
Peak Non-repetitive Surge Current (1/2 Cycle, 60 Hz, $T_J = -40$ to $+110^\circ\text{C}$)	I_{TSM}	20	Amps
Circuit Fusing ($t = 8.3\text{ ms}$)	I^2t	1.65	A^2s
Peak Gate Power	P_{GM}	0.5	Watt
Average Gate Power	$P_{G(\text{AV})}$	0.1	Watt
Peak Forward Gate Current	I_{GFM}	0.2	Amp

1. V_{DRM} and V_{RRM} for all types can be applied on a continuous basis. Ratings apply for zero or negative gate voltage; however, (cont.) positive gate voltage shall not be applied concurrent with negative potential on the anode. Blocking voltages shall not be tested with a constant current source such that the voltage ratings of the devices are exceeded.

Preferred devices are Motorola recommended choices for future use and best overall value.

C106 Series

MAXIMUM RATINGS — continued

Rating	Symbol	Value	Unit
Peak Reverse Gate Voltage	V_{GRM}	6	Volts
Operating Junction Temperature Range	T_J	-40 to +110	°C
Storage Temperature Range	T_{stg}	-40 to +150	°C
Mounting Torque ⁽¹⁾	—	6	in. lb.

1. Torque rating applies with use of compression washer (B52200F006). Mounting torque in excess of 6 in. lb. does not appreciably lower case-to-sink thermal resistance. Anode lead and heatsink contact pad are common.

For soldering purposes (either terminal connection or device mounting), soldering temperatures shall not exceed +200°C. For optimum results, an activated flux (oxide removing) is recommended.

THERMAL CHARACTERISTICS ($T_C = 25^\circ\text{C}$, $R_{GK} = 1\text{ k}\Omega$ unless otherwise noted.)

Characteristic	Symbol	Max	Unit
Thermal Resistance, Junction to Case	$R_{\theta JC}$	3	°C/W
Thermal Resistance, Junction to Ambient	$R_{\theta JA}$	75	°C/W

ELECTRICAL CHARACTERISTICS ($T_C = 25^\circ\text{C}$ unless otherwise noted.)

Characteristic	Symbol	Min	Typ	Max	Unit
Peak Forward or Reverse Blocking Current ($V_{AK} = \text{Rated } V_{DRM} \text{ or } V_{RRM}$, $R_{GK} = 1000\text{ Ohms}$) $T_J = 25^\circ\text{C}$ $T_J = 110^\circ\text{C}$	I_{DRM} , I_{RRM}	— —	— —	10 100	μA μA
Forward "On" Voltage ($I_{FM} = 1\text{ A Peak}$)	V_{TM}	—	—	2.2	Volts
Gate Trigger Current (Continuous dc) ($V_{AK} = 6\text{ Vdc}$, $R_L = 100\text{ Ohms}$) ($V_{AK} = 6\text{ Vdc}$, $R_L = 100\text{ Ohms}$, $T_C = -40^\circ\text{C}$)	I_{GT}	— —	30 75	200 500	μA
Gate Trigger Voltage (Continuous dc) ($V_{AK} = 6\text{ Vdc}$, $R_L = 100\text{ Ohms}$, $R_{GK} = 1000\text{ Ohms}$) $T_J = 25^\circ\text{C}$ ($V_{AK} = \text{Rated } V_{DRM}$, $R_L = 3000\text{ Ohms}$, $R_{GK} = 1000\text{ Ohms}$, $T_J = 110^\circ\text{C}$) $T_J = -40^\circ\text{C}$	V_{GT}	0.4 0.5 0.2	— — —	0.8 1 —	Volts
Holding Current ($V_D = 12\text{ Vdc}$, $R_{GK} = 1000\text{ Ohms}$) $T_J = 25^\circ\text{C}$ $T_J = -40^\circ\text{C}$ $T_J = +110^\circ\text{C}$	I_{HX}	0.3 0.4 0.14	— — —	3 6 2	mA
Forward Voltage Application Rate ($T_J = 110^\circ\text{C}$, $R_{GK} = 1000\text{ Ohms}$, $V_D = \text{Rated } V_{DRM}$)	dv/dt	—	8	—	V/ μs
Turn-On Time	t_{gt}	—	1.2	—	μs
Turn-Off Time	t_q	—	40	—	μs

FIGURE 1 – AVERAGE CURRENT DERATING

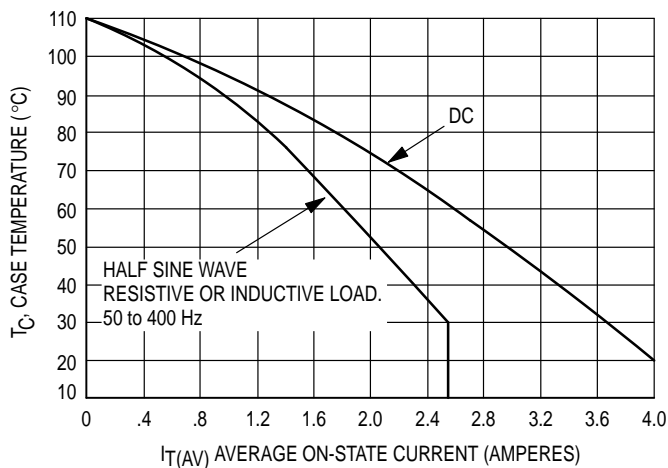
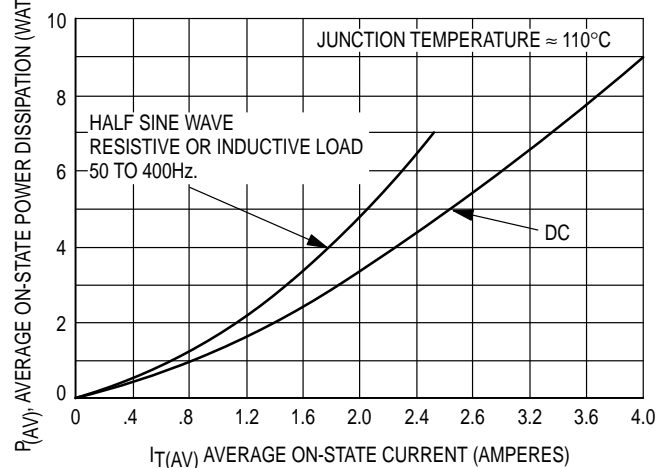
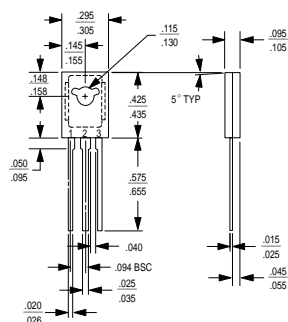


FIGURE 2 – MAXIMUM ON-STATE POWER DISSIPATION

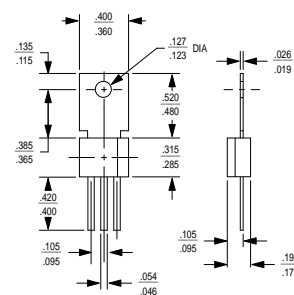


Package Interchangeability

The dimensional diagrams below compare the critical dimensions of the Motorola C-106 package with competitive devices. It has been demonstrated that the smaller dimensions of the Motorola package make it compatible in most lead-mount and chassis-mount applications. The user is advised to compare all critical dimensions for mounting compatibility.

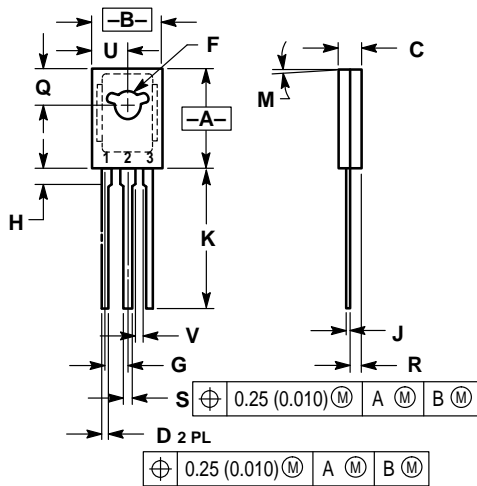


Motorola C-106 Package



Competitive C-106 Package

PACKAGE DIMENSIONS




STYLE 2:
PIN 1. CATHODE
2. ANODE
3. GATE

- NOTES:
1. DIMENSIONING AND TOLERANCING PER ANSI Y14.5M, 1982.
2. CONTROLLING DIMENSION: INCH.

DIM	INCHES		MILLIMETERS	
	MIN	MAX	MIN	MAX
A	0.425	0.435	10.80	11.04
B	0.295	0.305	7.50	7.74
C	0.095	0.105	2.42	2.66
D	0.020	0.026	0.51	0.66
F	0.115	0.130	2.93	3.30
G	0.094 BSC		2.39 BSC	
H	0.050	0.095	1.27	2.41
J	0.015	0.025	0.39	0.63
K	0.575	0.655	14.61	16.63
M	5° TYP		5° TYP	
Q	0.148	0.158	3.76	4.01
R	0.045	0.055	1.15	1.39
S	0.025	0.035	0.64	0.88
U	0.145	0.155	3.69	3.93
V	0.040	—	1.02	—

CASE 77-08
(TO-225AA)

Motorola reserves the right to make changes without further notice to any products herein. Motorola makes no warranty, representation or guarantee regarding the suitability of its products for any particular purpose, nor does Motorola assume any liability arising out of the application or use of any product or circuit, and specifically disclaims any and all liability, including without limitation consequential or incidental damages. "Typical" parameters can and do vary in different applications. All operating parameters, including "Typicals" must be validated for each customer application by customer's technical experts. Motorola does not convey any license under its patent rights nor the rights of others. Motorola products are not designed, intended, or authorized for use as components in systems intended for surgical implant into the body, or other applications intended to support or sustain life, or for any other application in which the failure of the Motorola product could create a situation where personal injury or death may occur. Should Buyer purchase or use Motorola products for any such unintended or unauthorized application, Buyer shall indemnify and hold Motorola and its officers, employees, subsidiaries, affiliates, and distributors harmless against all claims, costs, damages, and expenses, and reasonable attorney fees arising out of, directly or indirectly, any claim of personal injury or death associated with such unintended or unauthorized use, even if such claim alleges that Motorola was negligent regarding the design or manufacture of the part. Motorola and  are registered trademarks of Motorola, Inc. Motorola, Inc. is an Equal Opportunity/Affirmative Action Employer.

Literature Distribution Centers:

USA: Motorola Literature Distribution; P.O. Box 20912; Phoenix, Arizona 85036.
EUROPE: Motorola Ltd.; European Literature Centre; 88 Tanners Drive, Blakelands, Milton Keynes, MK14 5BP, England.
JAPAN: Nippon Motorola Ltd.; 4-32-1, Nishi-Gotanda, Shinagawa-ku, Tokyo 141, Japan.
ASIA PACIFIC: Motorola Semiconductors H.K. Ltd.; Silicon Harbour Center, No. 2 Dai King Street, Tai Po Industrial Estate, Tai Po, N.T., Hong Kong.

