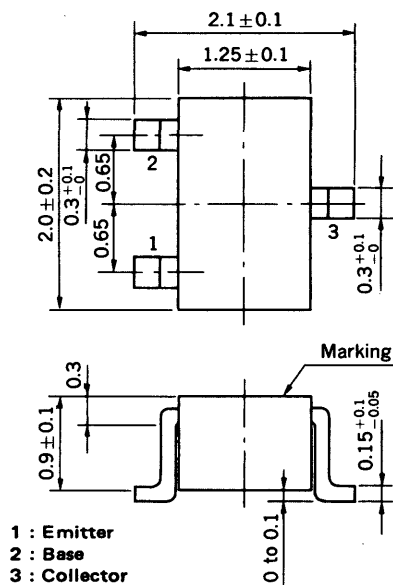


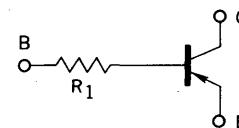
MEDIUM SPEED SWITCHING RESISTOR BUILT-IN TYPE PNP TRANSISTOR

PACKAGE DIMENSIONS in millimeters



FEATURES

- Resistor Built-in TYPE



$$R_1 = 22 \text{ k}\Omega$$

- Complementary to GA1F4Z

ABSOLUTE MAXIMUM RATINGS

Maximum Voltages and Currents ($T_a = 25^\circ\text{C}$)

Collector to Base Voltage	V_{CBO}	-60	V
Collector to Emitter Voltage	V_{CEO}	-50	V
Emitter to Base Voltage	V_{EBO}	-5	V
Collector Current (DC)	I_C	-100	mA
Collector Current (Pulse)	I_C	-200	mA
Maximum Power Dissipation			
Total Power Dissipation at 25°C Ambient Temperature	P_T	150	mW
Maximum Temperatures			
Junction Temperature	T_j	150	$^\circ\text{C}$
Storage Temperature Range	T_{stg}	-55 to +150	$^\circ\text{C}$

ELECTRICAL CHARACTERISTICS ($T_a = 25^\circ\text{C}$)

CHARACTERISTIC	SYMBOL	MIN.	TYP.	MAX.	UNIT	TEST CONDITIONS
Collector Cutoff Current	I_{CBO}			-100	nA	$V_{CB} = -50 \text{ V}, I_E = 0$
DC Current Gain	h_{FE1}^*	135	280	600		$V_{CE} = -5.0 \text{ V}, I_C = -5.0 \text{ mA}$
DC Current Gain	h_{FE2}^*	100	200			$V_{CE} = -5.0 \text{ V}, I_C = -50 \text{ mA}$
Collector Saturation Voltage	$V_{CE(sat)}^*$		-0.06	-0.2	V	$I_C = -5.0 \text{ mA}, I_B = -0.25 \text{ mA}$
High-Level Input Voltage	V_{IH}^*		-0.57	-0.5	V	$V_{CE} = -5.0 \text{ V}, I_C = -100 \mu\text{A}$
Low-Level Input Voltage	V_{IL}^*	-3.0	-1.1		V	$V_{CE} = -0.2 \text{ V}, I_C = -5.0 \text{ mA}$
Input Resistor	R_1	15.4	22.0	28.6	k Ω	
Turn-on Time	t_{on}			0.2	μs	$V_{CC} = -5 \text{ V}, V_{in} = -5 \text{ V}$ $R_L = 1 \text{ k}\Omega$ $PW = 2 \mu\text{s}, \text{Duty Cycle} \leq 2 \%$
Storage Time	t_{stg}			5.0	μs	
Turn-off Time	t_{off}			6.0	μs	

* Pulsed: $PW \leq 350 \mu\text{s}, \text{Duty Cycle} \leq 2 \%$

h_{FE} Classification

Marking	M64	M65	M66
h_{FE1}	135 to 270	200 to 400	300 to 600

TYPICAL CHARACTERISTICS ($T_a = 25^\circ\text{C}$)