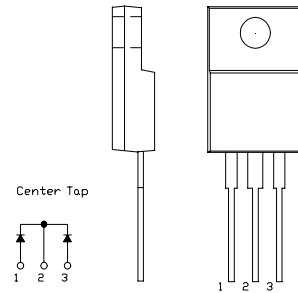


SBD Type : FCQ30A03L

OUTLINE DRAWING

FEATURES

- *Similar to TO-220AB Case
- *Fully Molded Isolation
- *Dual Diodes – Cathode Common
- *Low Forward Voltage Drop
- *High Surge Capability
- *Tj=150 °C operation



Maximum Ratings

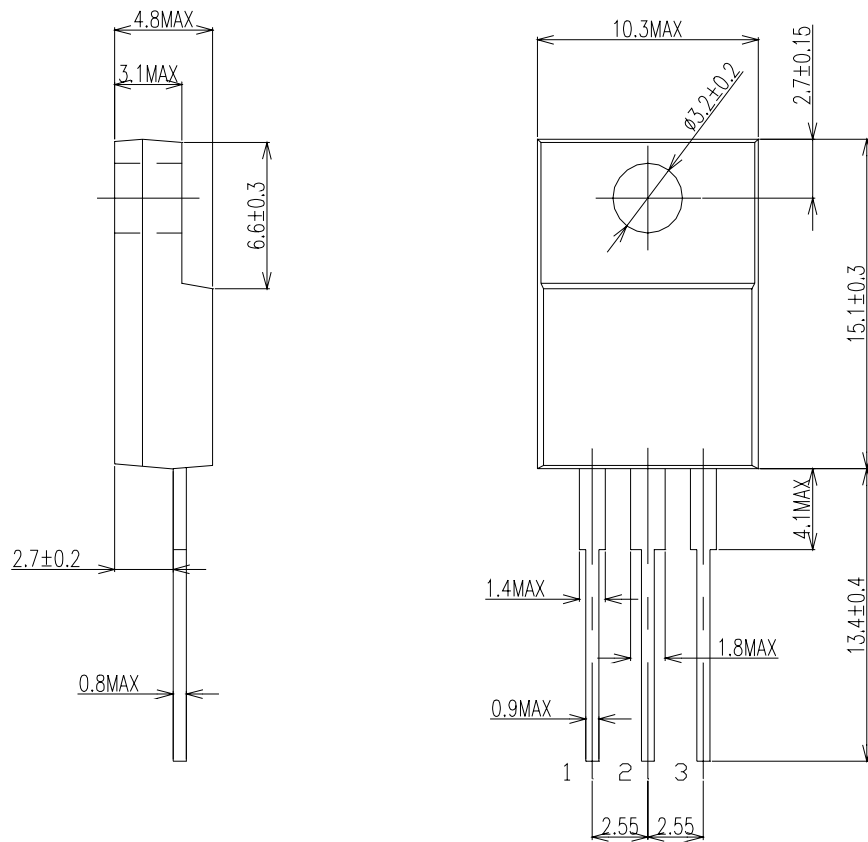
Approx Net Weight: 1.75g

Rating	Symbol	FCQ30A03L			Unit
Repetitive Peak Reverse Voltage	V _{RRM}	30			V
Repetitive Peak Surge Reverse Voltage	V _{RRSM}	35(pulse width ≤ 1μs duty ≤ 1/50)			V
Average Rectified Output Current	I _O	30	Tc=105°C	50 Hz Full Sine Wave Resistive Load	A
RMS Forward Current	I _{F(RMS)}	33.3			A
Surge Forward Current	I _{FSM}	250	50Hz Full Sine Wave ,1cycle Non-repetitive		A
Operating JunctionTemperature Range	T _{jw}	-40 to +150			°C
Storage Temperature Range	T _{stg}	-40 to +150			°C
Mounting torque	F _{tor}	recommended torque = 0.5			N•m

Electrical • Thermal Characteristics

Characteristics	Symbol	Conditions	Min.	Typ.	Max.	Unit
Peak Reverse Current	I_{RM}	$T_j = 25^\circ C$, $V_{RM} = V_{RRM}$ per arm	-	-	15	mA
Peak Forward Voltage	V_{FM}	$T_j = 25^\circ C$, $I_{FM} = 15 A$ per arm	-	-	0.49	V
Thermal Resistance	Rth(j-c)	Junction to Case	-	-	1.5	$^\circ C/W$
	Rth(c-f)	Case to Fin	-	-	1.5	$^\circ C/W$

FCQ30A03L OUTLINE DRAWING (Dimensions in mm)



Center Tap

