

QUARTZ CRYSTAL OSCILLATOR
■ GENERAL DESCRIPTION

The NJU6329 series is a C-MOS quartz crystal oscillator which consists of an oscillation amplifier, 3-stage divider and 3-state output buffer.

The oscillation frequency is as wide as up to 50MHz and the symmetry of 45-55% is realized over full oscillation frequency range.

The oscillation amplifier incorporates feed-back resistance and oscillation capacitors(C_g , C_d), therefore, it requires no external component except quartz crystal.

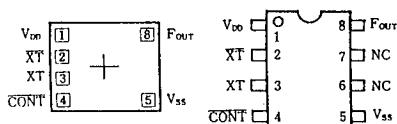
The 3-stage divider generates f_o , $f_o/2$, $f_o/4$ and $f_o/8$ and only one frequency selected by internal circuits is output.

The 3-state output buffer is TTL compatible and capable of 10 TTL driving.

The difference between NJU6329 and NJU6322 series is pin configuration only.

■ PACKAGE OUTLINE

NJU6329XC

NJU6329XE
■ PIN CONFIGURATION/PAD LOCATION

■ FEATURES

- Operating Voltage -- 3.0~6.0V
- Maximum Oscillation Frequency -- 50MHz
- Low Operating Current
- High Fan-out -- TTL 10
- 3-state Output Buffer
- Selected Frequency OutPut (mask option)
Only one frequency of f_o , $f_o/2$, $f_o/4$ and $f_o/8$ output
- Oscillation Capacitor C_g and C_d on-chip
- Oscillation and/or Output Stand-by Function
- Package Outline -- CHIP/EMP8
- C-MOS Technology

■ COORDINATES

 Unit: μm

No.	PAD	X	Y
1	V_{DD}	-450	257
2	\overline{XT}	-450	84
3	XT	-450	-83
4	\overline{CONT}	-450	-249
5	V_{SS}	475	-249
8	F_{OUT}	475	257

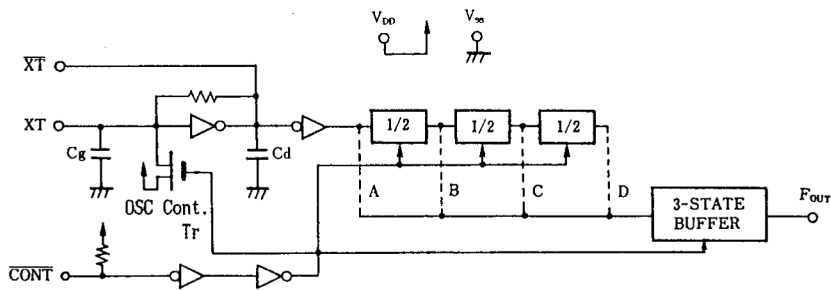
Chip Size : 1.24 X 0.8mm
 Chip Center : $X=0\mu\text{m}, Y=0\mu\text{m}$
 Chip Thickness : $400\mu\text{m} \pm 30\mu\text{m}$

(Note) No. 6 and 7 terminals are only for package type information. There are no PAD on the chip.

■ LINE-UP TABLE

Type No.	Output Freq.	C_g	C_d	Osc.Stop Function
NJU6329A	f_o	23pF	23pF	No
NJU6329B	$f_o/2$	23pF	23pF	No
NJU6329C	$f_o/4$	23pF	23pF	No
NJU6329D	$f_o/8$	23pF	23pF	No

■ BLOCK DIAGRAM



■ TERMINAL DESCRIPTION

NO.	SYMBOL	F U N C T I O N	
1	V _{DD}	+ 5V	
2	X _T	Quartz Crystal Connecting Terminals	
3	XT		
4	C _{ONT}	3-State Output Control and Divider Reset	
		C _{ONT}	F _{OUT}
		H	Output either one frequency from f ₀ , f ₀ /2, f ₀ /4, and f ₀ /8
		L	Output High Impedance and Divider Reset
5	V _{SS}	GND	
8	F _{OUT}	Output either one frequency from f ₀ , f ₀ /2, f ₀ /4, and f ₀ /8 (Note)	

(Note) Reference the Line-Up Table

■ ABSOLUTE MAXIMUM RATINGS

($T_a=25^{\circ}\text{C}$)

P A R A M E T E R	SYMBOL	R A T I N G S	UNIT
Supply Voltage	V_{DD}	-0.5 ~ +7.0	V
Input Voltage	V_{IN}	$V_{SS}-0.5 \sim V_{DD}+0.5$	V
Output Voltage	V_O	-0.5 ~ $V_{DD}+0.5$	V
Input Current	I_{IN}	± 10	mA
Output Current	I_O	± 25	mA
Power Dissipation	P_D	200 (EMP)	mW
Operating Temperature Range	T_{OPR}	-40 ~ + 85	$^{\circ}\text{C}$
Storage Temperature Range	T_{STG}	-55 ~ +125	$^{\circ}\text{C}$

(Note) Decoupling capacitor should be connected between V_{DD} and V_{SS} due to the stabilized operation for the circuit.

■ ELECTRICAL CHARACTERISTICS

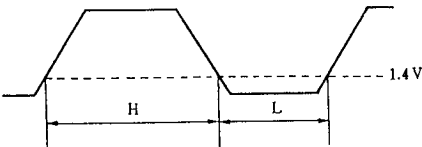
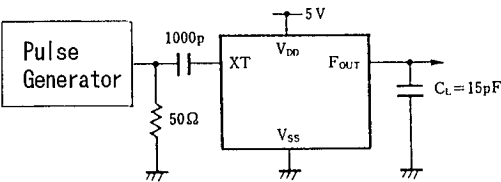
(Ta=25°C, V_{DD}=5V)

PARAMETER	SYMBOL	CONDITIONS	MIN	TYP	MAX	UNIT
Operating Voltage	V _{DD}		3		6	V
Operating Current	I _{DD}	f _{OSC} =16MHz, No Load			15	mA
Stand-by Current	I _{st}	$\overline{\text{CONT}}$, XT=V _{SS} , No Load (Note)			1	μA
Input Voltage	V _{IH}		3.5		5.0	V
	V _{IL}		0		1.5	
Output Current	I _{OH}	V _{DD} =5V, V _{OH} =4.5V	4			mA
	I _{OL}	V _{DD} =5V, V _{OL} =0.5V	16			
Input Current	I _{IN}	$\overline{\text{CONT}}$ Terminal, $\overline{\text{CONT}}$ =V _{SS}			400	μA
3-St Off-leakage Current	I _{OZ}	$\overline{\text{CONT}}$ =V _{SS} , F _{OUT} =V _{SS} or V _{DD}			±0.1	μA
Internal Capacitor	C _g , C _d	f _{osc} =16MHz		23		pF
Max. Oscillation Freq.	f _{MAX}		50			MHz
Output Signal Symmetry	SYM	C _L =15pF at 1.4V	45	50	55	%
Output Signal Rise Time	t _{r1}	C _L =15pF, 20~80%			8	ns
	t _{r2}	C _L =15pF, R _L =390Ω, 0.4~2.4V			6	
Output Signal Fall Time	t _{f1}	C _L =15pF, 80~20%			6	ns
	t _{f1}	C _L =15pF, R _L =390Ω, 2.4~0.4V			4	

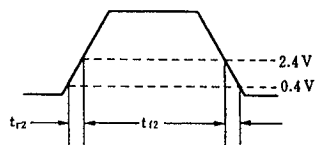
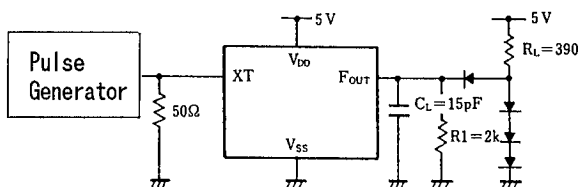
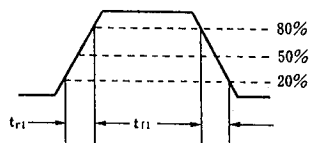
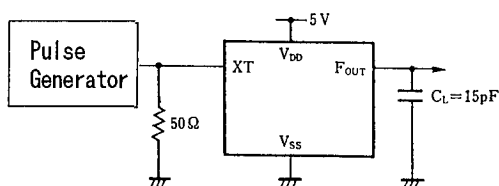
Note) Excluding input current on $\overline{\text{CONT}}$ terminal.

■ MEASUREMENT CIRCUITS

(1) Output Signal Symmetry (C_L=15pF)



(2) Output Signal Rise/Fall Time ($C_L=15\text{pF}$)



NJU6329 Series

MEMO

[CAUTION]

The specifications on this databook are only given for information, without any guarantee as regards either mistakes or omissions. The application circuits in this databook are described only to show representative usages of the product and not intended for the guarantee or permission of any right including the industrial rights.