

## LMP8275

# High Common Mode, Gain of 20, Precision Voltage Difference Amplifier

### General Description

The LMP8275 is a fixed gain differential amplifier with a  $-2V$  to  $27V$  input common mode voltage range and a supply voltage range of  $4.75V$  to  $5.5V$ . The LMP8275 is part of the LMP™ precision amplifier family which will detect, amplify and filter small differential signals in the presence of high common mode voltages. The gain is fixed at 20 and is adequate to drive an ADC to full scale in most cases. This gain is achieved in two stages, a preamplifier with a fixed gain of 10 and a second stage amplifier with a fixed gain of 2. The internal signal path between these two stages is brought out on two pins, A1 and A2, which provide a connection for a filter network.

The LMP8275 will operate with reduced specifications over the extended common mode input voltage range of  $-2V$  to  $36V$ . This feature makes the device suitable for applications with load dump in automotive systems.

### Features

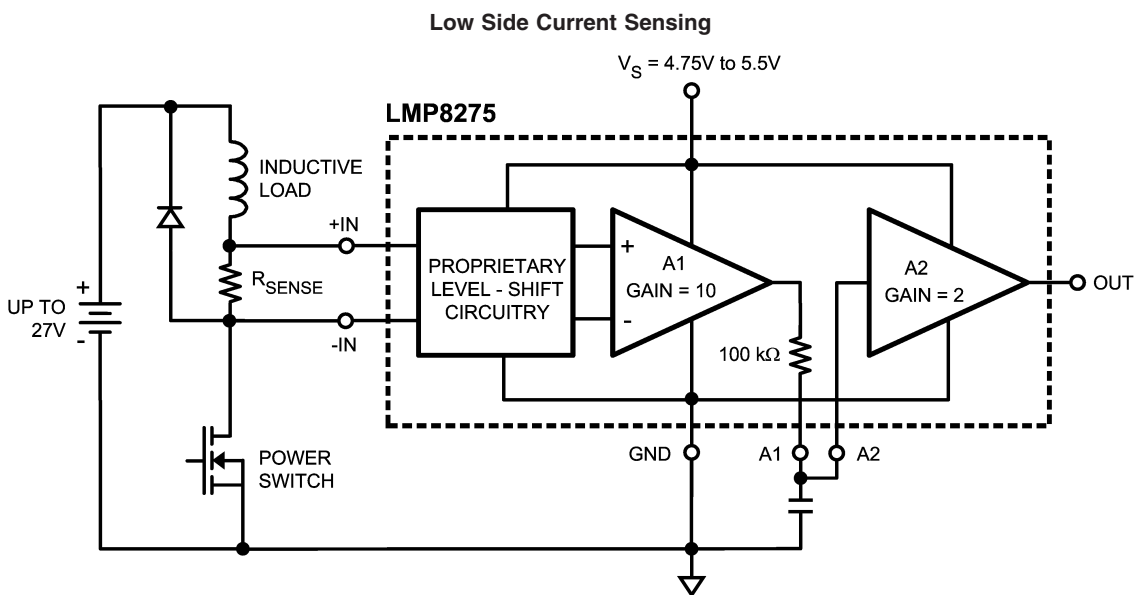
Typical Values,  $T_A = 25^\circ C$

■ Input offset voltage	$\pm 2$ mV max
■ TCVo's	$\pm 30$ $\mu V/^\circ C$ max
■ CMRR	80 dB min
■ Extended CMVR	$-2V$ to $36V$
■ Output voltage swing	Rail-to-rail
■ Bandwidth	80 kHz
■ Operating temperature range (ambient)	$-40^\circ C$ to $125^\circ C$
■ Supply voltage	$4.75V$ to $5.5V$
■ Supply current	1 mA

### Applications

- Fuel injection control
- High and low side driver configuration current sensing
- Power management systems

### Typical Application



**Absolute Maximum Ratings** (Note 1)

If Military/Aerospace specified devices are required, please contact the National Semiconductor Sales Office/Distributors for availability and specifications.

ESD Tolerance (Note 2)

Human Body Model

For +IN and -IN  $\pm 4000V$ For all other pins  $\pm 2000V$ 

Machine Model 200V

Supply Voltage ( $V_S$  - GND) 5.75V

Voltage on +IN and -IN -5V to 42V

Transient (400 ms) -7V to 45V

Storage Temperature Range -65°C to +150°C

Junction Temperature (Note 3)

+150°C

Soldering Information

Infrared or Convection (20 sec)

235°C

Wave Soldering Lead Temp. (10 sec)

260°C

**Operating Ratings** (Note 1)

Temperature Range

Packaged Device (Note 3)

-40°C to +125°C

Supply Voltage ( $V_S$  - GND)

4.75V to 5.5V

Package Thermal Resistance ( $\theta_{JA}$  (Note 3))

8-Pin SOIC

190°C/W

**5V Electrical Characteristics** (Note 4)

Unless otherwise specified, all are limits guaranteed for  $T_A = 25^\circ\text{C}$ ,  $V_S = 5V$ , GND = 0V,  $-2V \leq V_{CM} \leq 27V$ ,  $R_L = \text{Open}$ . **Bold-face** limits apply at the temperature extremes.

Symbol	Parameter	Conditions		Min	Typ (Note 5)	Max	Units
$V_{OS}$	Input Offset Voltage	$V_{CM} = V_S/2$			$\pm 0.25$	$\pm 2.0$	mV
$TCV_{OS}$	Input Offset Voltage Drift	$V_{CM} = V_S/2$	$25^\circ\text{C} \leq T_A \leq 125^\circ\text{C}$		$\pm 20$	<b><math>\pm 30</math></b>	$\mu\text{V}/^\circ\text{C}$
			$-40^\circ\text{C} \leq T_A \leq 25^\circ\text{C}$		$\pm 20$	<b><math>\pm 35</math></b>	
$A2\ I_B$	Input Bias Current of A2	(Note 6)			-20		fA
						<b><math>\pm 20</math></b>	nA
$I_S$	Supply Current				1.0	1.2 1.4	mA
$R_{CM}$	Input Impedance Common Mode			160	200	240	k $\Omega$
$R_{DM}$	Input Impedance Differential Mode			320	400	480	k $\Omega$
CMVR	Input Common-Mode Voltage Range			-2		+27	V
ECMVR	Extended Common-Mode Voltage Range			-2		36	V
DC CMRR	DC Common Mode Rejection Ratio	$0^\circ\text{C} \leq T_A \leq 125^\circ\text{C}$	$-2V \leq V_{CM} \leq 27V$	80	103		dB
			$-2V \leq V_{CM} \leq 36V$	60			
		$-40^\circ\text{C} \leq T_A \leq 0^\circ\text{C}$	$-2V \leq V_{CM} \leq 27V$	77			
			$-2V \leq V_{CM} \leq 36V$	60			
AC CMRR	AC Common Mode Rejection Ratio (Note 7)	$-2V \leq V_{CM} \leq 27V$	$f = 1\text{ kHz}$	80	95		dB
		$-2V \leq V_{CM} \leq 27V$	$f = 10\text{ kHz}$		78		
PSRR	Power Supply Rejection Ratio	$4.75V \leq V_S \leq 5.5V$		70	80		dB
$R_{F-INT}$	Filter Resistor			97	100	103	k $\Omega$
$TCR_{F-INT}$	Filter Resistor Drift				$\pm 20$		ppm/ $^\circ\text{C}$
$A_V$	Total Gain			19.8	20	20.2	V/V
	Gain Drift				$\pm 2$	<b><math>\pm 25</math></b>	ppm/ $^\circ\text{C}$
$A_{V1}$	A1 Gain			9.9	10	10.1	V/V
$A_{V2}$	A2 Gain			1.98	2.0	2.02	V/V
$A1\ V_{OUT}$	A1 Output Voltage Swing		VOL		0.004	0.01	V
			VOH	4.80	4.95		
$A2\ V_{OUT}$	A2 Output Voltage Swing (Notes 8, 9)	$R_L = 100\text{ k}\Omega$ on Output	VOL		0.007	0.02	V
			VOH	4.80	4.99		
		$R_L = 10\text{ k}\Omega$ on Output	VOL		0.03		V
			VOH		4.95		
SR	Slew Rate (Note 10)				0.7		V/ $\mu\text{s}$

## 5V Electrical Characteristics (Note 4) (Continued)

Unless otherwise specified, all are limits guaranteed for  $T_A = 25^\circ\text{C}$ ,  $V_S = 5\text{V}$ ,  $\text{GND} = 0\text{V}$ ,  $-2\text{V} \leq V_{\text{CM}} \leq 27\text{V}$ ,  $R_L = \text{Open}$ . **Bold-face** limits apply at the temperature extremes.

Symbol	Parameter	Conditions	Min	Typ (Note 5)	Max	Units
BW	Bandwidth			80		kHz
Noise	0.1 Hz to 10 Hz			5.7		$\mu\text{V}_{\text{PP}}$
	Spectral Density	$f = 1 \text{ kHz}$		452		$\text{nV}/\sqrt{\text{Hz}}$

**Note 1:** Absolute Maximum Ratings indicate limits beyond which damage to the device may occur. Operating Ratings indicate conditions for which the device is intended to be functional, but specific performance is not guaranteed. For guaranteed specifications and the test conditions, see the Electrical Characteristics Tables.

**Note 2:** Human Body Model is  $1.5 \text{ k}\Omega$  in series with  $100 \text{ pF}$ . Machine Model is  $0\Omega$  in series with  $200 \text{ pF}$ .

**Note 3:** The maximum power dissipation is a function of  $T_{\text{J(MAX)}}$ ,  $\theta_{\text{JA}}$ , and  $T_A$ . The maximum allowable power dissipation at any ambient temperature is  $P_D = (T_{\text{J(MAX)}} - T_A) / \theta_{\text{JA}}$ . All numbers apply for packages soldered directly onto a PC board.

**Note 4:** Electrical table values apply only for factory testing conditions at the temperature indicated. Factory testing conditions result in very limited self-heating of the device.

**Note 5:** Typical values represent the parametric norm at the time of characterization.

**Note 6:** Positive current corresponds to current flowing into the device.

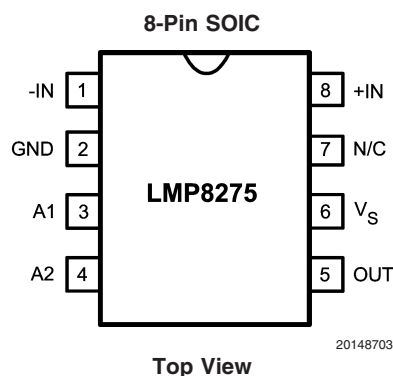
**Note 7:** AC Common Mode Signal is a  $24 \text{ V}_{\text{PP}}$  sine-wave ( $0\text{V}$  to  $24\text{V}$ ) at the given frequency

**Note 8:** For  $\text{VOL}$ ,  $R_L$  is connected to  $V_S$  and for  $\text{VOH}$ ,  $R_L$  is connected to  $\text{GND}$ .

**Note 9:** For this test input is driven from A1 stage.

**Note 10:** Slew rate is the average of the rising and falling slew rates.

## Connection Diagram



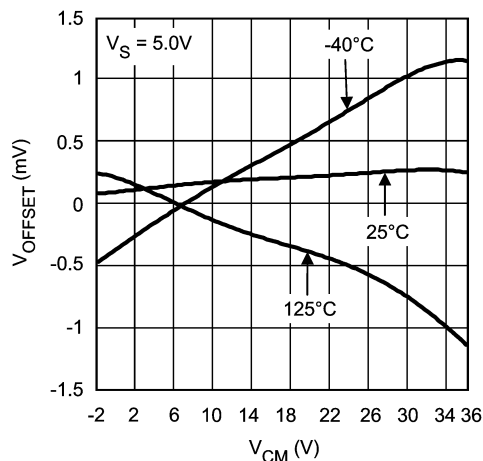
## Ordering Information

Package	Part Number	Package Marking	Transport Media	NSC Drawing
8-Pin SOIC	LMP8275MA	LMP8275MA	95 Units/Rail	M08A
	LMP8275MAX		2.5k Units Tape and Reel	

# Typical Performance Characteristics

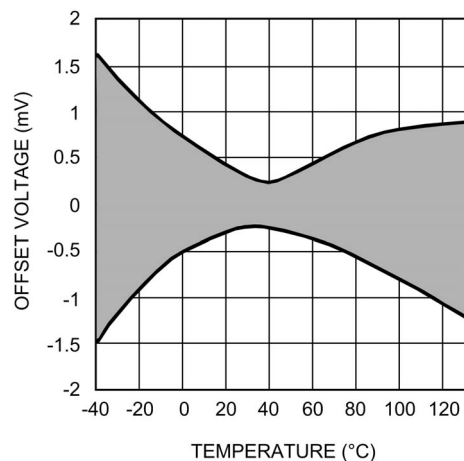
Unless otherwise specified:  $T_A = 25^\circ\text{C}$ ,  $V_S = 5\text{V}$ ,  $V_{CM} = V_S/2$

## $V_{OS}$ vs. $V_{CM}$ Over Temperature



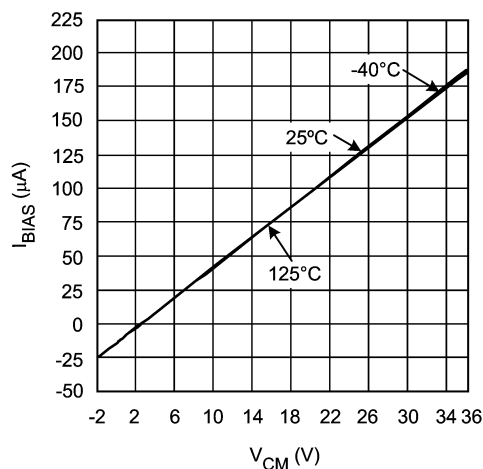
20148715

## Typical $V_{OS}$ vs. Temperature



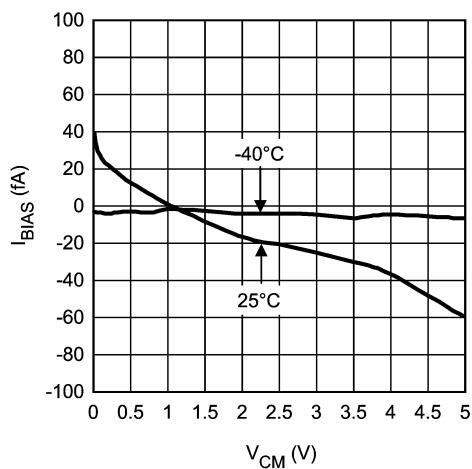
20148721

## Input Bias Current Over Temperature (A1 Inputs)



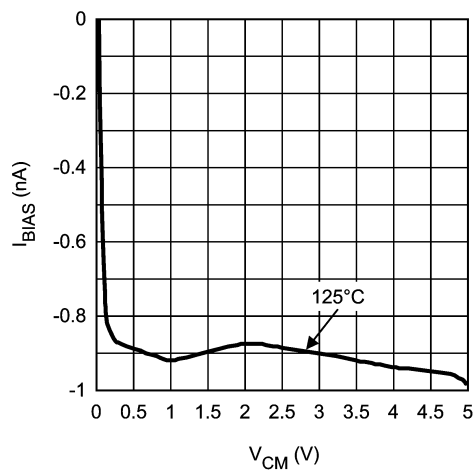
20148719

## Input Bias Current Over Temperature (A2 Input)



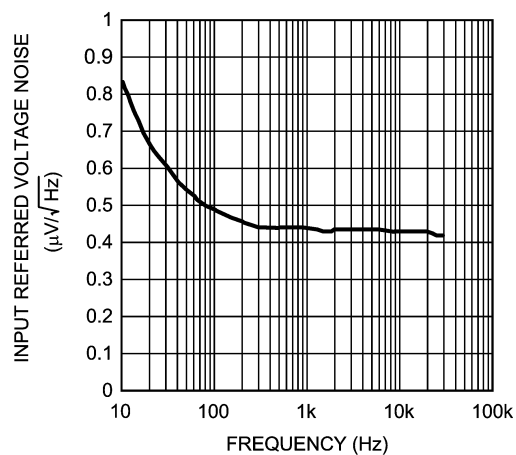
20148718

## Input Bias Current Over Temperature (A2 Input)



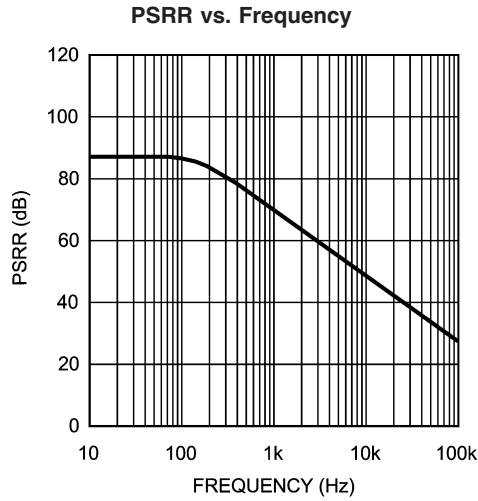
20148720

## Input Referred Voltage Noise vs. Frequency

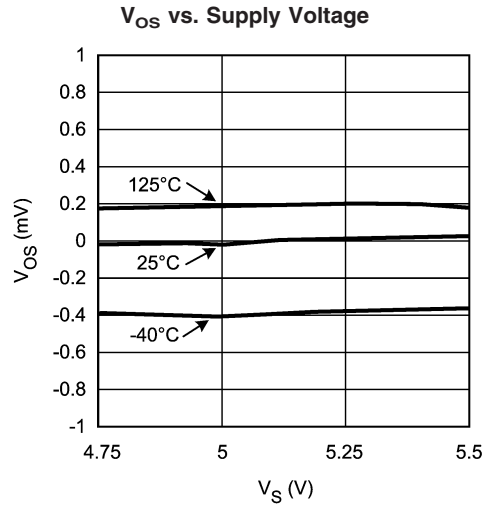


20148706

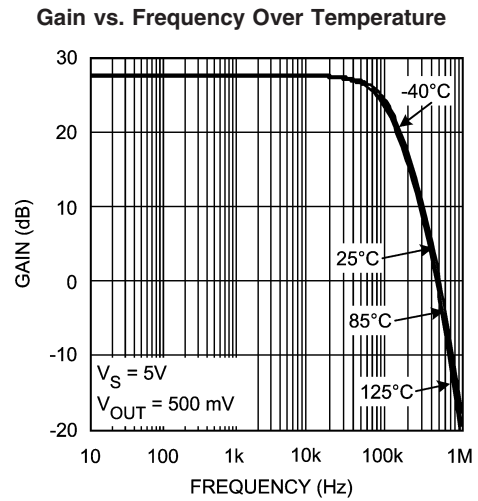
# **Typical Performance Characteristics** Unless otherwise specified: $T_A = 25^\circ\text{C}$ , $V_S = 5\text{V}$ , $V_{CM} = V_S/2$ (Continued)



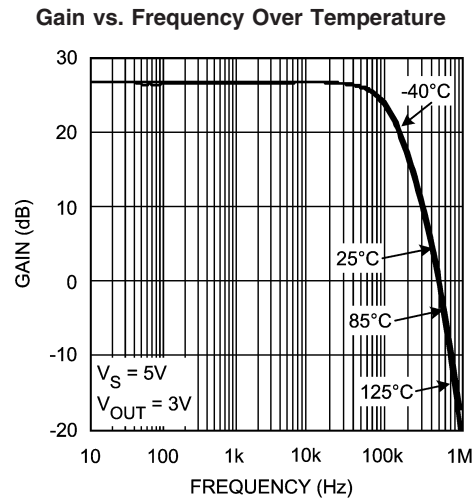
20148723



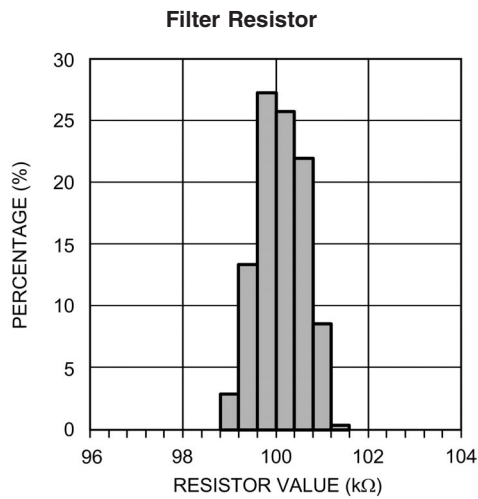
20148722



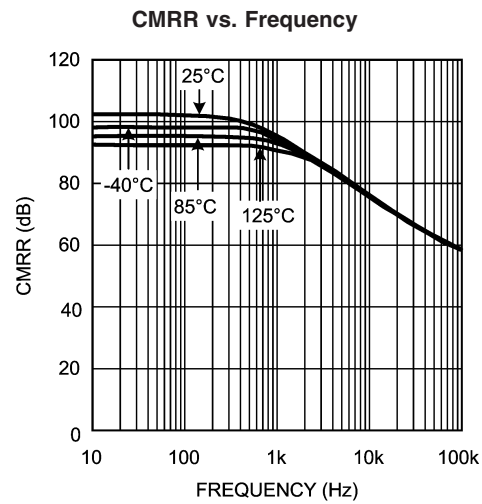
20148712



20148711



20148717

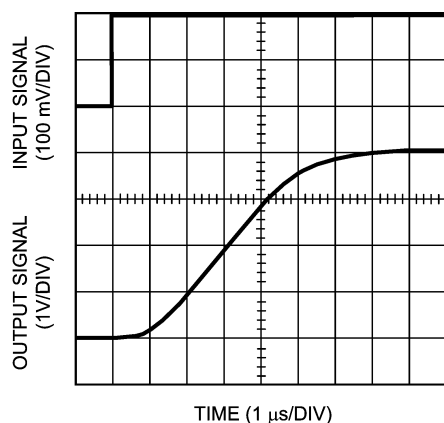


20148714

# Typical Performance Characteristics

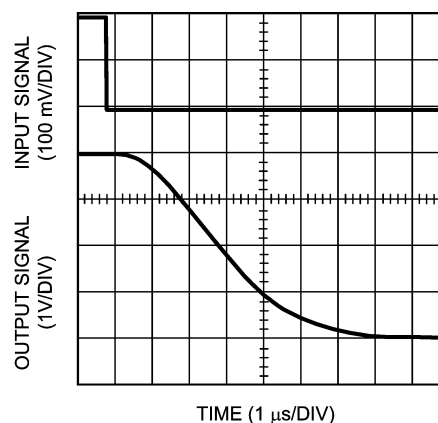
Unless otherwise specified:  $T_A = 25^\circ\text{C}$ ,  $V_S = 5\text{V}$ ,  $V_{CM} = V_S/2$   
(Continued)

## Settling Time (Rising Edge)



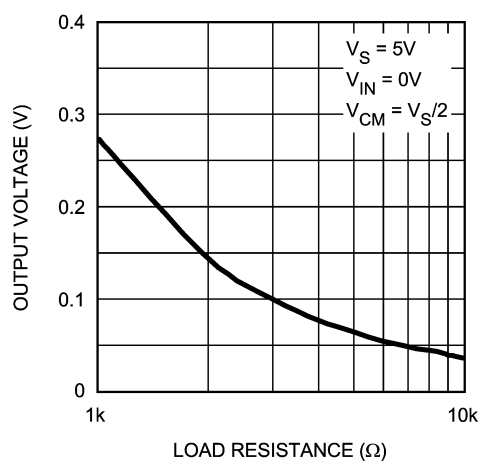
20148710

## Settling Time (Falling Edge)



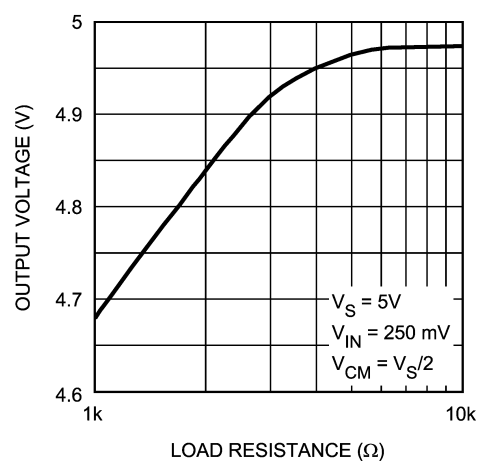
20148709

## Output Voltage vs. $R_L$ to $V_S$



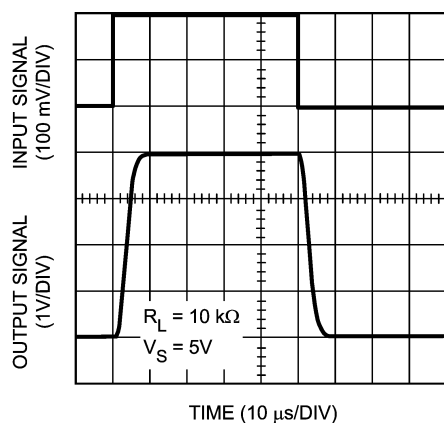
20148713

## Output Voltage vs. $R_L$ to GND



20148707

## Step Response



20148708

## Application Note

### LMP8275

The LMP8275 is a single supply amplifiers with a fixed gain of 20 and an extended common mode voltage range of  $-2V$  to  $36V$ . The fixed gain is achieved in two separate stages, a preamplifier with gain of +10 and a second stage amplifier with gain of +2. A block diagram of the LMP8275 is shown in Figure 1.

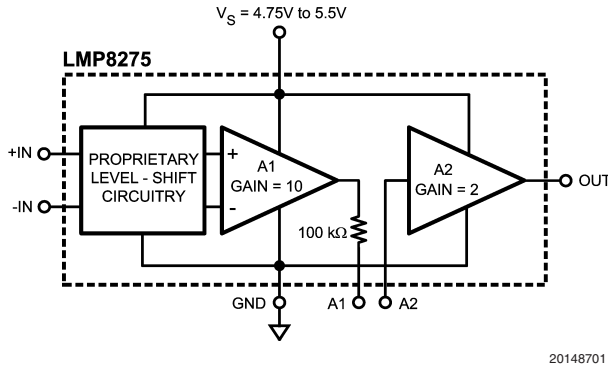


FIGURE 1.

The overall offset of the LMP8275 is minimized by trimming amplifier A1. This is done in such a way that the output referred offset of A1 cancels the input referred offset of A2 or  $10V_{OS1} = -V_{OS2}$ .

Because of this offset voltage relationship, the offset of each individual amplifier stage may be more than the limit specified for the overall system in the datasheet tables. If the signal going from A1 to A2 is amplified or attenuated (by use of amplifiers and resistors), the overall LMP8275 offset will be affected as a result. Filtering the signal between A1 and A2 or simply connecting the two pins will not change the offset of the LMP8275.

Referencing input referred offset voltages, the following relationship holds:

$$\frac{(10V_{OS1}) + (V_{OS2})}{10} = V_{OS}(\text{LMP8275})$$

If the signal on pin 3 is scaled, attenuated or amplified, by a factor  $X$ , then the offset of the overall system will become:

$$\frac{(10V_{OS1}) \times (X) + (V_{OS2})}{10(X)} = V_{OS}(\text{LMP8275})$$

### POWER SUPPLY DECOUPLING

In order to decouple the LMP8275 from AC noise on the power supply, it is recommended to use a  $0.1 \mu\text{F}$  on the supply pin. It is best to use a  $0.1 \mu\text{F}$  capacitor in parallel with a  $10 \mu\text{F}$  capacitor. This will generate an AC path to ground for most frequency ranges and will greatly reduce the noise introduced by the power supply.

### SECOND ORDER LOW PASS FILTER

The LMP8275 can be effectively used to build a second order Sallen-Key low pass filter. The general filter is shown in

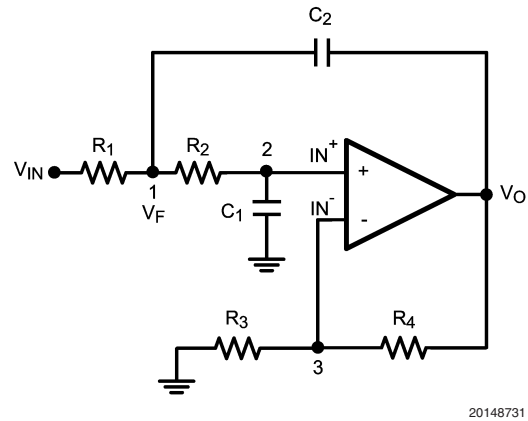


FIGURE 2.

With the general transfer function:

$$\frac{V_O}{V_{IN}} = \frac{K}{M - KN} \quad (1)$$

Where

$$M = s^2 C_1 C_2 R_1 R_2 + s(R_1 C_1 + R_1 C_2 + C_1 R_2) + 1$$

$$N = s C_2 R_1$$

and

$$\frac{1}{K} = \frac{1}{A_{VOL}} + \frac{R_3}{R_3 + R_4}$$

$K$  represents the sum of DC closed loop gain and the non-ideal behavior of the operational amplifier. Assuming ideal behavior, the equation for  $K$  reduces simply to the DC gain, which is +2 for the LMP8275.

The LMP8275 can be used to realize this configuration as shown in Figure 3:

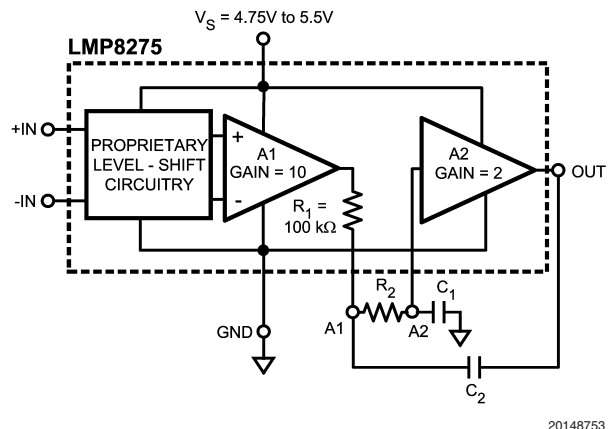


FIGURE 3.

## Application Note (Continued)

Assuming ideal behavior, the equation for K reduces simply to the DC gain, which is set for +2 for the LMP8270.

Using Equation (1), the filter parameters can be calculated as follows:

$$\omega_o = \frac{1}{\sqrt{R_1 R_2 C_1 C_2}}$$

$$f_c = \frac{1}{2\pi \sqrt{R_1 R_2 C_1 C_2}}$$

$$Q = \frac{\sqrt{R_1 R_2 C_1 C_2}}{R_1 C_1 + R_2 C_1 + (1-K)R_1 C_2}$$

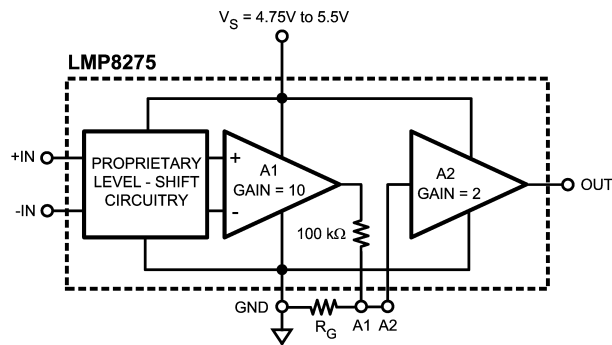
for the LMP8275,  $R_1 = 100 \text{ k}\Omega$ . Setting  $R_1 = R_2$  and  $C_1 = C_2$  results in a low pass filter with  $Q = 1$ . Since the values of resistors are predetermined, the corner frequency of this implementation of the filter depends on the capacitor values.

### GAINS OTHER THAN 20

The LMP8275 has an internal gain of +20; however this gain can be modified. The signal path between the two amplifiers is available as external pins.

#### GAINS LESS THAN 20

Figure 4 shows the configuration used to reduce the LMP8275 gain.



20148747

FIGURE 4.

Where:

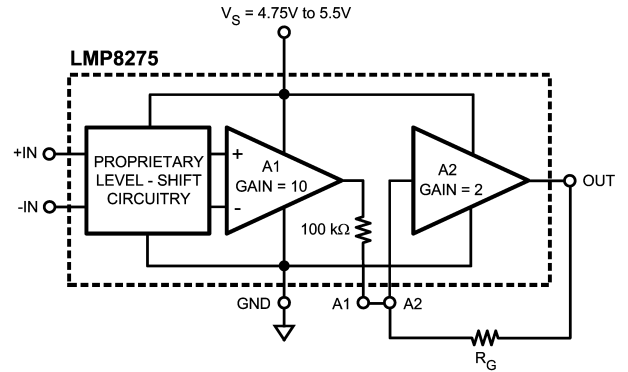
$$\text{GAIN (NEW)} = \frac{20 R_G}{R_G + 100 \text{ k}\Omega}$$

and

$$R_G = (100 \text{ k}\Omega) \frac{\text{GAIN (NEW)}}{20 - \text{GAIN (NEW)}}$$

### GAINS GREATER THAN 20

A higher gain can be achieved by using positive feedback on the second stage amplifier, A2, of LMP8275. Figure 5 shows the configuration:



20148750

FIGURE 5.

The total gain is given by:

$$\text{GAIN (NEW)} = \frac{20 R_G}{R_G - 100 \text{ k}\Omega}$$

Which can be rearranged to calculate  $R_G$ :

$$R_G = (100 \text{ k}\Omega) \frac{\text{GAIN (NEW)}}{\text{GAIN (NEW)} - 20}$$

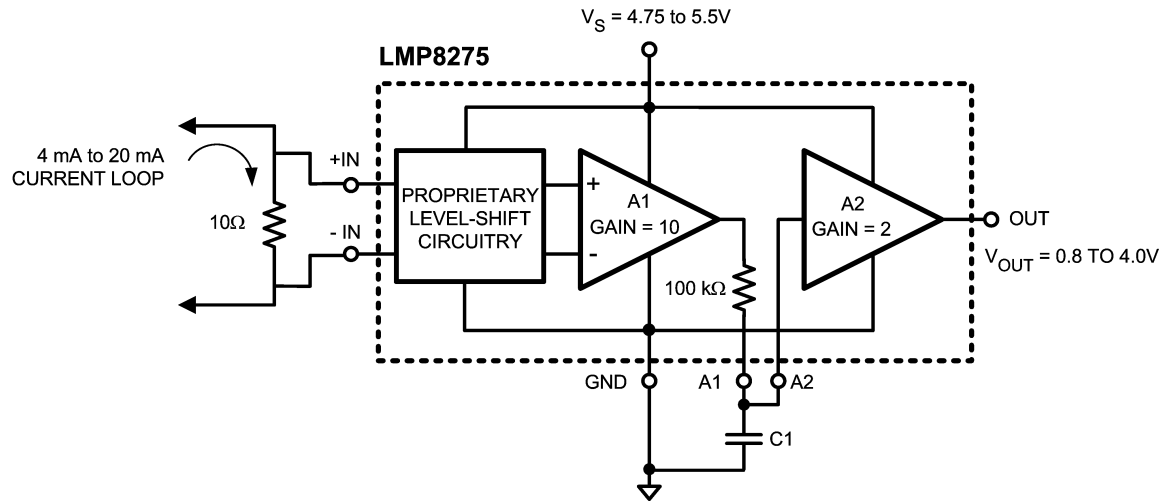
The inverting gain of the second amplifier is set at 2, giving the total system a gain of 20. The non-inverting gain which is achieved through positive gain can be less than or equal to this gain without any issues. This implies a total gain of 40 or less is easily achievable. Once the positive gain surpasses the negative gain, the system might oscillate.

### CURRENT LOOP RECEIVER

Many types of process control instrumentation use 4 to 20 mA transmitters to transmit the sensor's analog value to a central control room. The LMP8275 can be used as a current loop receiver as shown in Figure 6.



# Application Note (Continued)



20148724

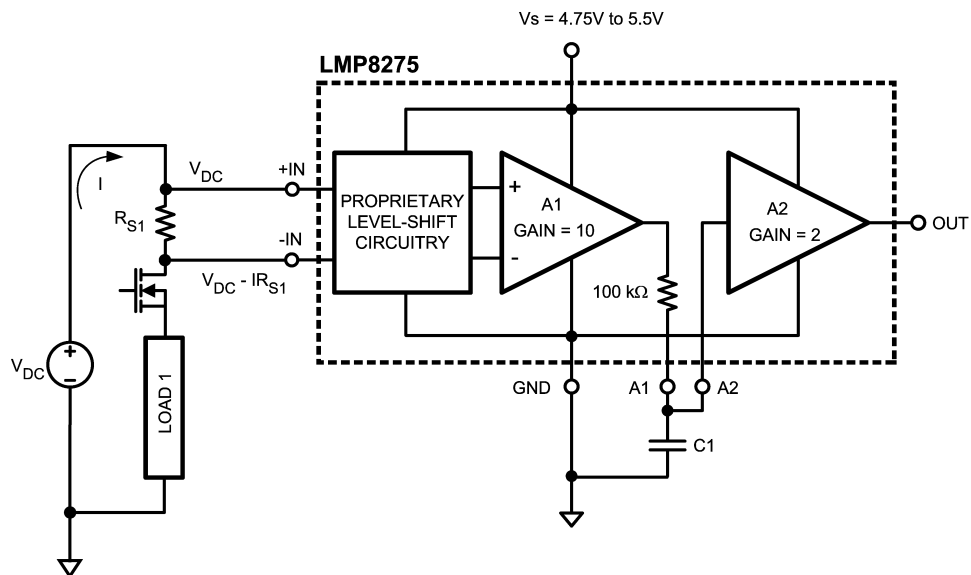
FIGURE 6.

## HIGH SIDE CURRENT SENSING

High side current measurement requires a differential amplifier with gain. Here the DC voltage source represent a common mode voltage with the +IN input at the supply voltage and the -IN input very close to the supply voltage. The LMP8275 can be used with a common mode voltage,  $V_{DC}$  in this case, of up to 36V.

The LMP8275 can be used for high side current sensing. The large common mode voltage range of this device allows

it to sense signals outside of its supply voltage range. Also, the LMP8275 has very high CMRR, which enables it to sense very small signals in the presence of larger common mode signals. The system in *Figure 7* couples these two characteristics of the LMP8275 in an automotive application. The signal through  $R_{S1}$  is detected and amplified by the LMP8275 in the presence of a common mode signal of up to 27V with the highest accuracy.



20148725

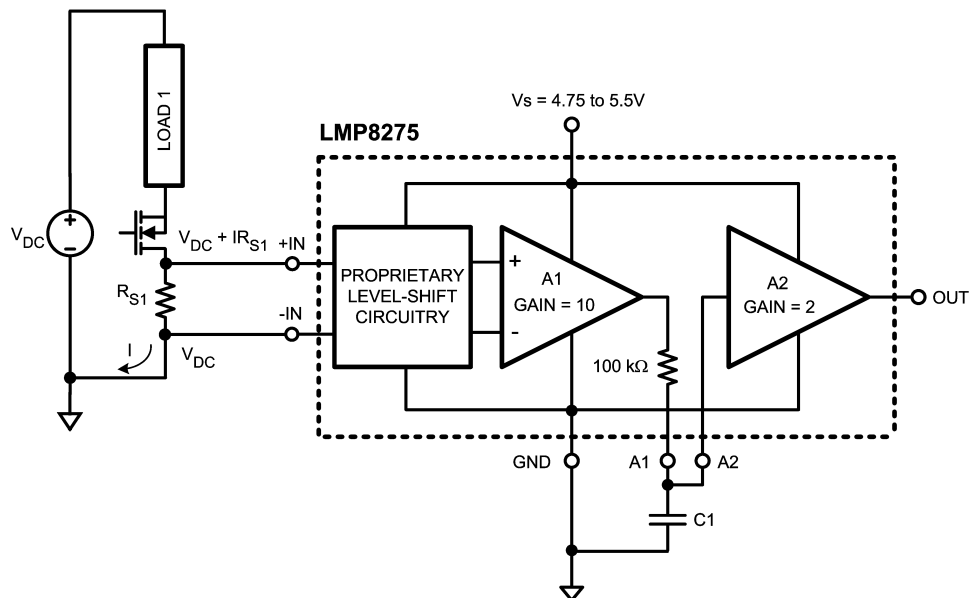
FIGURE 7.

## Application Note (Continued)

### LOW SIDE CURRENT SENSING

Low side current measurements can cause a problem for operational amplifiers by exceeding the negative common mode voltage limit of the device. In *Figure 8*, the load current is returning to the power source through a common connection that has a parasitic resistance. The voltage drop across

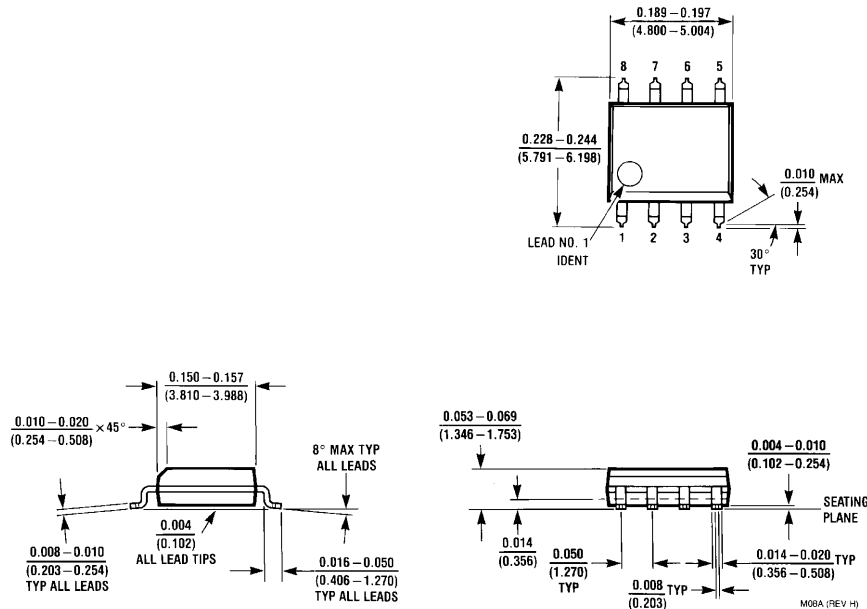
the parasitic resistances can cause the ground connection of the measurement circuits to be at a positive voltage with respect to the common side of the sense resistor. This will result in one or both of the inputs being negative with respect to the measurement circuit's ground. The LMP8275 has a wide input common mode voltage range of  $-2V$  to  $36V$  and will function in this condition.



20148726

FIGURE 8.

## Physical Dimensions inches (millimeters) unless otherwise noted



**8-Pin SOIC**  
**NS Package Number M08A**

National does not assume any responsibility for use of any circuitry described, no circuit patent licenses are implied and National reserves the right at any time without notice to change said circuitry and specifications.

For the most current product information visit us at [www.national.com](http://www.national.com).

### LIFE SUPPORT POLICY

NATIONAL'S PRODUCTS ARE NOT AUTHORIZED FOR USE AS CRITICAL COMPONENTS IN LIFE SUPPORT DEVICES OR SYSTEMS WITHOUT THE EXPRESS WRITTEN APPROVAL OF THE PRESIDENT AND GENERAL COUNSEL OF NATIONAL SEMICONDUCTOR CORPORATION. As used herein:

1. Life support devices or systems are devices or systems which, (a) are intended for surgical implant into the body, or (b) support or sustain life, and whose failure to perform when properly used in accordance with instructions for use provided in the labeling, can be reasonably expected to result in a significant injury to the user.
2. A critical component is any component of a life support device or system whose failure to perform can be reasonably expected to cause the failure of the life support device or system, or to affect its safety or effectiveness.

### BANNED SUBSTANCE COMPLIANCE

National Semiconductor manufactures products and uses packing materials that meet the provisions of the Customer Products Stewardship Specification (CSP-9-111C2) and the Banned Substances and Materials of Interest Specification (CSP-9-111S2) and contain no "Banned Substances" as defined in CSP-9-111S2.

Leadfree products are RoHS compliant.



**National Semiconductor**  
**Americas Customer**  
**Support Center**  
Email: [new.feedback@nsc.com](mailto:new.feedback@nsc.com)  
Tel: 1-800-272-9959

**National Semiconductor**  
**Europe Customer Support Center**  
Fax: +49 (0) 180-530 85 86  
Email: [europe.support@nsc.com](mailto:europe.support@nsc.com)  
Deutsch Tel: +49 (0) 69 9508 6208  
English Tel: +44 (0) 870 24 0 2171  
Français Tel: +33 (0) 1 41 91 8790

**National Semiconductor**  
**Asia Pacific Customer**  
**Support Center**  
Email: [ap.support@nsc.com](mailto:ap.support@nsc.com)

**National Semiconductor**  
**Japan Customer Support Center**  
Fax: 81-3-5639-7507  
Email: [jpn.feedback@nsc.com](mailto:jpn.feedback@nsc.com)  
Tel: 81-3-5639-7560

[www.national.com](http://www.national.com)