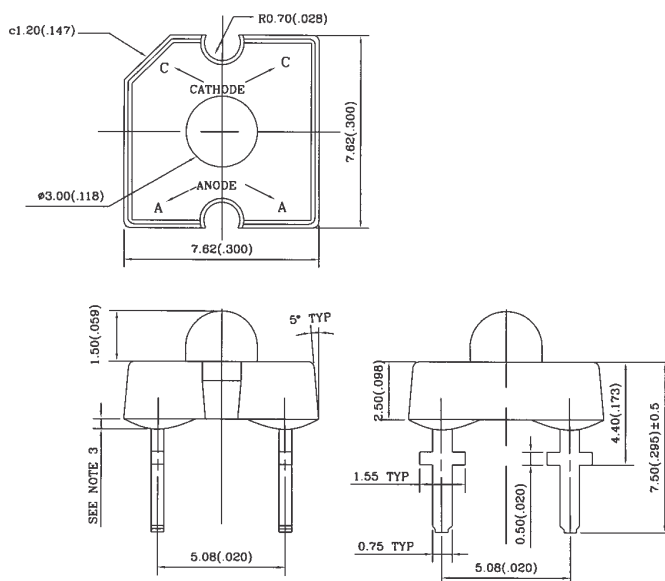
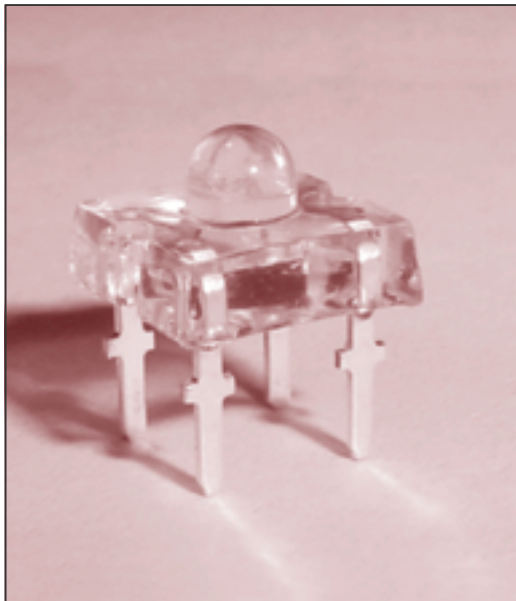


L-945XX SUPER FLUX LED



| Part No. | Chip | | IF (Forward Current) | Wave Length λ p(nm) | Electro-Optical Characteristics | | | | View Angle (deg) |
|------------|--------------|------------------|-------------------------|------------------------|---------------------------------|------|-----------|----------|---------------------|
| | Raw Material | Emitted Color | | | Vf(V)20mA | | Iv(mcd) | Φ v(mlm) | |
| | | | | | Typ. | Max. | Typ(20mA) | Typ(1F) | |
| L-945LB5C | GaInN/GaN | Ultra Blue | 30 | 470 | 3.5 | 4.0 | 650 | 850 | 30 |
| L-945LW5C | GaInN/GaN | Ultra Blue | 30 | | 3.5 | 4.0 | 2200 | 1200 | 60 |
| L-945LPG1C | GaInN/GaN | Ultra Pure Green | 30 | 525 | 3.7 | 4.2 | 3200 | 1500 | 40 |
| L-945LPG2C | GaInN/GaN | Ultra Pure Green | 30 | 525 | 3.7 | 4.2 | 2500 | 1300 | 35 |
| L-9451HURC | GaAlInP/GaAs | Ultra Red | 50 | 626 | 2.0 | 2.4 | 360 | 2000 | 90 |
| L-9451VE2C | TS GaAlInP | Ultra Red | 70 | 626 | 2.4 | 2.8 | 850 | 4500 | 95 |
| L-9451VE3C | GaAlInP/GaAs | Ultra Red | 70 | 620 | 2.0 | 2.4 | 500 | 2800 | 90 |
| L-9451VY1C | GaAlInP/GaAs | Ultra Yellow | 70 | 593 | 2.0 | 2.4 | 500 | 2100 | 95 |
| L-9451VY2C | TS GaAlInP | Ultra Yellow | 70 | 590 | 2.25 | 2.6 | 700 | 2300 | 100 |
| L-9451VY3C | GaAlInP/GaAs | Ultra Yellow | 50 | 591 | 2.0 | 2.4 | 550 | 1800 | 100 |
| L-9452HURC | GaAlInP/GaAs | Ultra Red | 50 | 626 | 2.0 | 2.4 | 650 | 2400 | 60 |
| L-9452VE2C | TS GaAlInP | Ultra Red | 70 | 626 | 2.2 | 2.8 | 1600 | 5500 | 70 |
| L-9452VE3C | GaAlInP/GaAs | Ultra Red | 70 | 620 | 2.2 | 2.4 | 930 | 3600 | 70 |
| L-9452VY1C | GaAlInP/GaAs | Ultra Yellow | 70 | 593 | 2.0 | 2.4 | 1000 | 2400 | 70 |
| L-9452VY2C | TS GaAlInP | Ultra Yellow | 70 | 590 | 2.25 | 2.6 | 1600 | 2800 | 65 |
| L-9452VY3C | GaAlInP/GaAs | Ultra Yellow | 50 | 591 | 2.0 | 2.4 | 1000 | 2000 | 65 |

1.All dimension are in millimeters (inches).

2.Tolerance is ± 0.25 mm (0.01") unless otherwise specified.