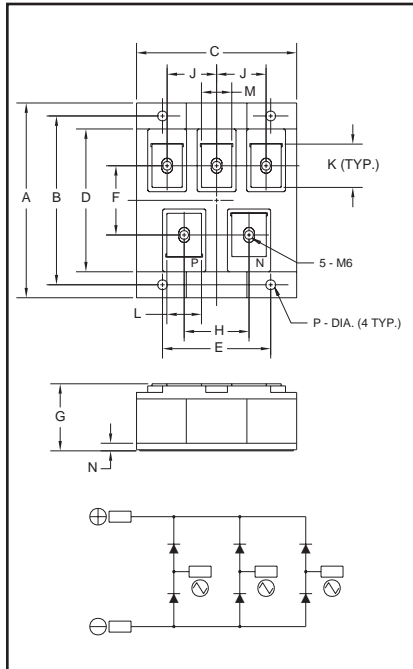


Three-Phase Diode Bridge Modules 150 Amperes/1200-1600 Volts



Outline Drawing

Dimension	Inches	Millimeters
A	3.54	90.0
B	3.07	78.0
C	2.91	74.0
D	2.60	66.0
E	1.97	50.0
F	1.26	32.0
G	1.22	31.0
H	1.18	30.0
J	0.90	23.0
K	0.79	20.0
L	0.63	16.0
M	0.55	14.0
N	.26	6.5
P	0.177±0.004 Dia. Dia. 4.50±0.1	



ME601215, ME601615
Three-Phase Diode Bridge Modules
150 Amperes/1200-1600 Volts

Description:

Powerex Three-Phase Diode Bridge Modules are designed for use in three-phase bridge applications. The modules are isolated consisting of six rectifier diodes.

Features:

- ☐ Isolated Mounting
- ☐ Planar Chips

Applications:

- ☐ Inverters
- ☐ DC Power Supplies
- AC Motor Control Front End

Ordering Information:

Select the complete eight digit module part number you desire from the table below.

Example: ME601215 is a 1200 Volt, 150 Ampere Three-Phase Diode Bridge Module.

Type	Voltage Volts (x100)	Current Rating Amperes (x10)
ME60	12 16	15



Powerex, Inc., 200 Hillis Street, Youngwood, Pennsylvania 15697-1800 (724) 925-7272

ME601215, ME601615
Three-Phase Diode Bridge Modules
150 Amperes/1200-1600 Volts

Absolute Maximum Ratings

Characteristics	Symbol	ME601215	ME601615	Units
Peak Reverse Blocking Voltage	V_{RRM}	1200	1600	Volts
Transient Peak Reverse Blocking Voltage (Non-Repetitive), $t < 5\text{ms}$	V_{RSM}	1350	1700	Volts
DC Reverse Blocking Voltage	$V_{R(DC)}$	960	1280	Volts
DC Output Current, $T_C = 97^\circ\text{C}$	I_O	150	150	Amperes
Peak One-Cycle Surge (Non-Repetitive) On-State Current (60Hz)	I_{FSM}	1500	1500	Amperes
Peak One-Cycle Surge (Non-Repetitive) On-State Current (50Hz)	I_{FSM}	1365	1365	Amperes
I^2t (for Fusing), 8.3 milliseconds	I^2t	9400	9400	A^2sec
Storage Temperature	T_{STG}	-40 to 125	-40 to 125	$^\circ\text{C}$
Operating Temperature	T_j	-40 to 150	-40 to 150	$^\circ\text{C}$
Maximum Mounting Torque M4 Mounting Screw	—	12	12	in.-lb.
Maximum Mounting Torque M4 Terminal Screw	—	12	12	in.-lb.
Module Weight (Typical)	—	405	405	Grams
V Isolation	V_{RMS}	2500	2500	Volts



Powerex, Inc., 200 Hillis Street, Youngwood, Pennsylvania 15697-1800 (724) 925-7272

ME601215, ME601615
Three-Phase Diode Bridge Modules
150 Amperes/1200-1600 Volts

Electrical and Thermal Characteristics, $T_j = 25^\circ\text{C}$ unless otherwise specified

Characteristics	Symbol	Test Conditions	ME601215/ME601615	Units
Blocking State Maximums				
Reverse Leakage Current, Peak	I_{RRM}	$T_j = 150^\circ\text{C}$, $V_{RRM} = \text{Rated}$	15	mA
Conducting State Maximums				
Peak On-State Voltage	V_{FM}	$I_{FM} = 150\text{A}$	1.35	Volts
Thermal Maximums				
Thermal Resistance, Junction-to-Case	$R_{\theta(J-C)}$	Per Module	0.15	$^\circ\text{C/Watt}$
Thermal Resistance, Case-to-Sink (Lubricated)	$R_{\theta(C-S)}$	Per Module	0.04	$^\circ\text{C/Watt}$

ME601215, ME601615
Three-Phase Diode Bridge Modules
 150 Amperes/1200-1600 Volts

