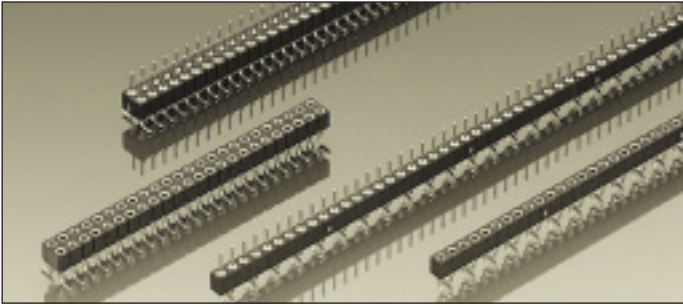
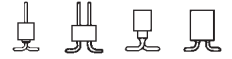


Series 830

PCB connectors 2.0 mm
Single row / double row
Surface mount



"Hard metric" PCB receptacles and pin connectors, surface mount






Grid spacing 2.0×2.0 mm

Receptacles for pins

Ø 0.40–0.56 mm

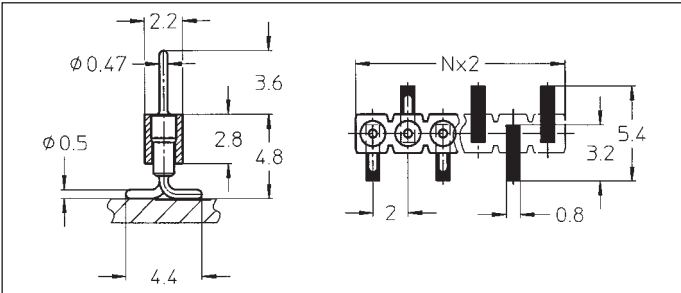
Screw machined pins Ø 0.46–0.47 mm

For corresponding connectors see pages 18, 19 and 21

Platings	Sleeve 	Clip 	Pin 
10 90			0.25 µm Au 5 µm Sn Pb
91	5 µm Sn Pb	0.25 µm Au	
93	5 µm Sn Pb	0.75 µm Au	
99	5 µm Sn Pb	5 µm Sn Pb	

Ordering information

Replace **xxx** with the number of poles, e.g. 833-91-**xxx**-30-001 for a double row version with 8 pins per poles becomes:
833-91-**016**-30-001

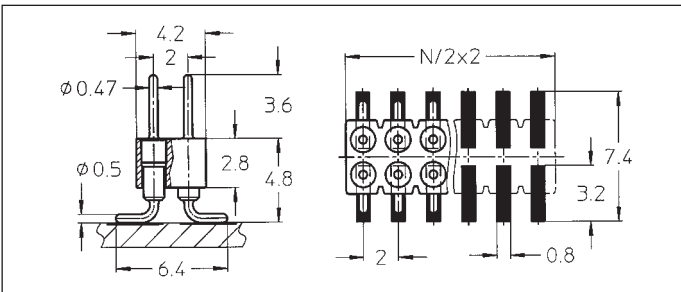


830-10-xxx-30-001

830-90-xxx-30-001

SMD pin connector: single row, perpendicular mount

Availability from: 3 to 50 contacts
Standard number of contacts 50

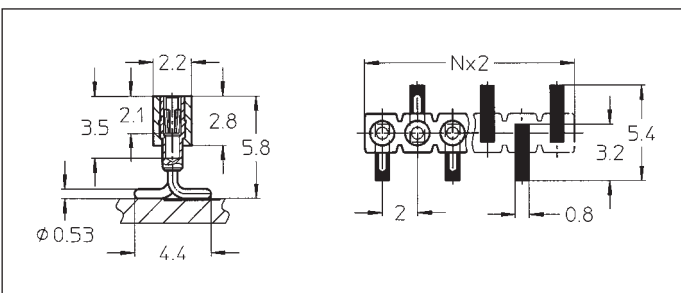


832-10-xxx-30-001

832-90-xxx-30-001

SMD pin connector: double row, perpendicular mount

Availability from: 4 to 100 contacts
Standard number of contacts 100



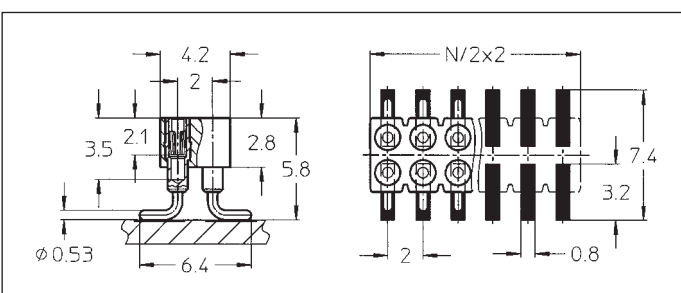
831-91-xxx-30-001

831-93-xxx-30-001

831-99-xxx-30-001

SMD receptacle: single row, perpendicular mount

Availability from: 3 to 50 contacts
Standard number of contacts 50



833-91-xxx-30-001

833-93-xxx-30-001

833-99-xxx-30-001

SMD receptacle: double row, perpendicular mount

Availability from: 4 to 100 contacts
Standard number of contacts 100