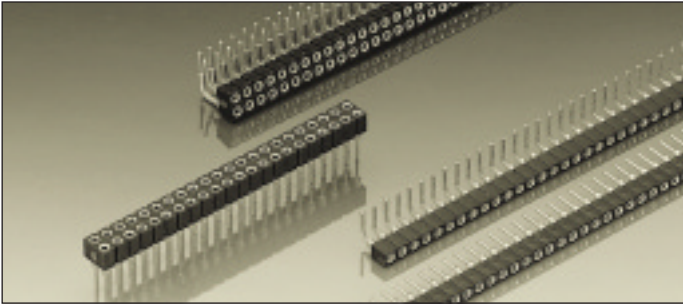


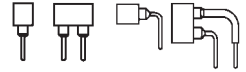
## Series 830

PCB connectors 2.0 mm  
Single row / double row  
Solder tail



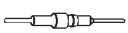


### "Hard metric" PCB receptacles solder tail

Grid spacing 2.0×2.0 mm  
Receptacle for pins  
Ø 0.40–0.56 mm

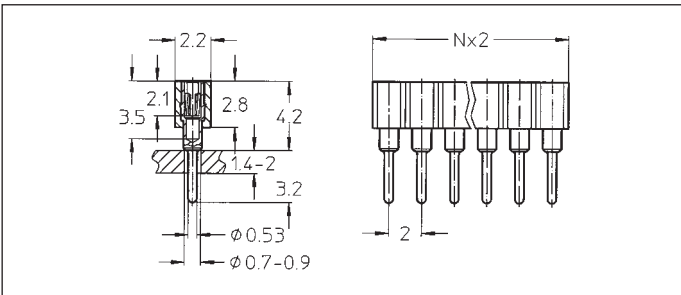


For corresponding pin connectors see pages 19 and 20

Platings	Sleeve 	Clip 	Pin 
91	5 µm Sn Pb	0.25 µm Au	
93	5 µm Sn Pb	0.75 µm Au	
99	5 µm Sn Pb	5 µm Sn Pb	

### Ordering information

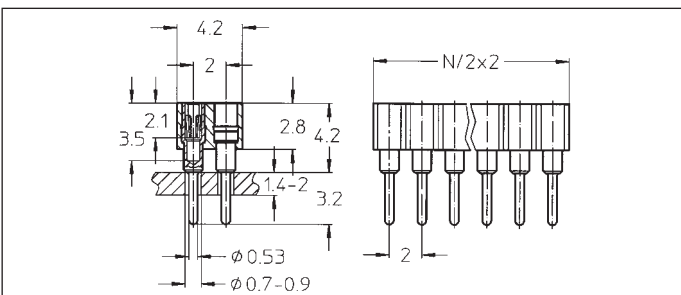
Replace **xxx** with the number of poles, e.g. 833-93-**xxx**-10-001  
for a double row version with 8 pins per row becomes:  
833-93-**016**-10-001



831-91-xxx-10-001  
831-93-xxx-10-001  
831-99-xxx-10-001

Straight receptacle: solder tail,  
single row

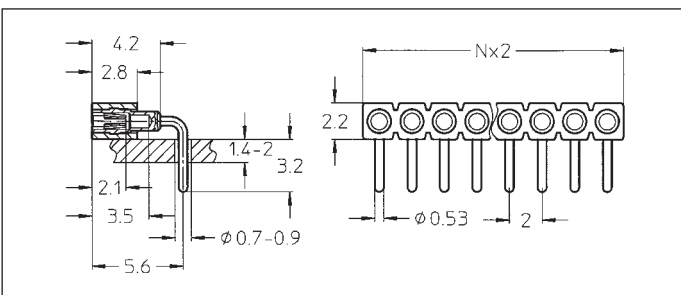
Availability from: 1 to 50 contacts  
Standard number of contacts 50



833-91-xxx-10-001  
833-93-xxx-10-001  
833-99-xxx-10-001

Straight receptacle: solder tail,  
double row

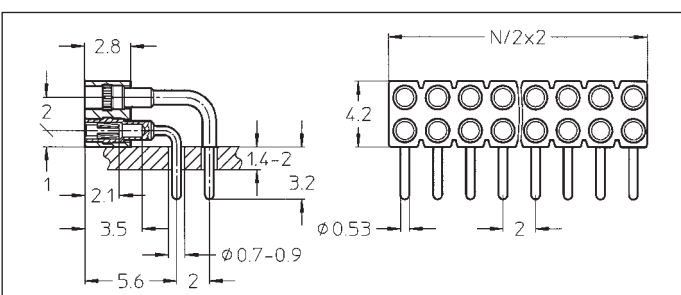
Availability from: 4 to 100  
contacts  
Standard number of contacts 100



831-91-xxx-20-001  
831-93-xxx-20-001  
831-99-xxx-20-001

Right angle receptacle: solder tail,  
single row

Availability from: 1 to 50 contacts  
Standard number of contacts 50



833-91-xxx-20-001  
833-93-xxx-20-001  
833-99-xxx-20-001

Right angle receptacle: solder tail,  
double row

Availability from: 4 to 100  
contacts  
Standard number of contacts 100