

ULTRA LOW CAPACITANCE TVS ARRAY

APPLICATIONS

- ✓ Ethernet - 10/100/1000 Base T
- ✓ Cellular Phones
- ✓ Handheld - Wireless Systems
- ✓ Personal Digital Assistant (PDA)
- ✓ USB Interface

IEC COMPATIBILITY (EN61000-4)

- ✓ 61000-4-2 (ESD): Air - 15kV, Contact - 8kV
- ✓ 61000-4-4 (EFT): 40A - 5/50ns
- ✓ 61000-4-5 (Surge): 24A, 8/20 μ s - Level 2(Line-Ground) & Level 3(Line-Line)

FEATURES

- ✓ 350 Watts Peak Pulse Power per Line ($t_p = 8/20\mu$ s)
- ✓ Unidirectional & Bidirectional Configurations
- ✓ Replacement for MLV (0805)
- ✓ Protects One Power or I/O Port
- ✓ ESD Protection > 40 kilovolts
- ✓ Low Clamping Voltage
- ✓ Available in Multiple Voltage Types Ranging from 5V to 24V
- ✓ **ULTRA LOW CAPACITANCE: 0.6pF Typical**
- ✓ RoHS Compliant in Lead-Free Versions

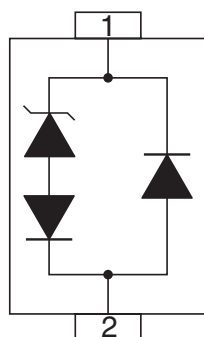
MECHANICAL CHARACTERISTICS

- ✓ Molded JEDEC SOD-323
- ✓ Weight 5 milligrams (Approximate)
- ✓ Available in Tin-Lead or Lead-Free Pure-Tin Plating(Annealed)
- ✓ Solder Reflow Temperature:
 - Tin-Lead - Sn/Pb, 85/15: 240-245°C
 - Pure-Tin - Sn, 100: 260-270°C
- ✓ Flammability rating UL 94V-0
- ✓ 8mm Tape and Reel Per EIA Standard 481
- ✓ Device Marking: Marking Code & Polarity Band (*Unidirectional Only*)

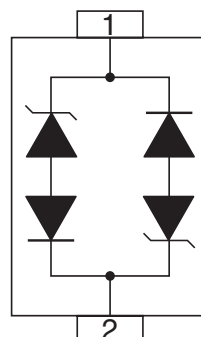


PIN CONFIGURATIONS

UNIDIRECTIONAL



BIDIRECTIONAL



DEVICE CHARACTERISTICS

MAXIMUM RATINGS @ 25°C Unless Otherwise Specified

PARAMETER	SYMBOL	VALUE	UNITS
Peak Pulse Power ($t_p = 8/20\mu s$) - See Figure 1	P_{PP}	350	Watts
Operating Temperature	T_J	-55°C to 150°C	°C
Storage Temperature	T_{STG}	-55°C to 150°C	°C

ELECTRICAL CHARACTERISTICS PER LINE @ 25°C Unless Otherwise Specified

PART NUMBER (See Note 1 & Note 2)	DEVICE MARKING	RATED STAND-OFF VOLTAGE V_{WM} VOLTS	MINIMUM BREAKDOWN VOLTAGE @ 1mA $V_{(BR)}$ VOLTS	MAXIMUM CLAMPING VOLTAGE (See Fig. 2) @ $I_p = 1A$ V_C VOLTS	MAXIMUM CLAMPING VOLTAGE (See Fig. 2) @ 8/20 μs V_C @ I_{PP}	MAXIMUM LEAKAGE CURRENT @ V_{WM} I_D μA	TYPICAL CAPACITANCE @ 0V, 1 MHz C pF
GBLC05I	A	5.0	6.0	9.8	18.3V @ 17.0A	5	0.6
GBLC05CI	AC	5.0	6.0	9.8	18.3V @ 17.0A	5	0.6
GBLC08I	B	8.0	8.5	13.4	18.5V @ 17.0A	2	0.6
GBLC08CI	BC	8.0	8.5	13.4	18.5V @ 17.0A	2	0.6
GBLC12I	D	12.0	13.3	19.0	28.6V @ 11.0A	1	0.6
GBLC12CI	DC	12.0	13.3	19.0	28.6V @ 11.0A	1	0.6
GBLC15I	E	15.0	16.7	24.0	31.8V @ 10.0A	1	0.6
GBLC15CI	EC	15.0	16.7	24.0	31.8V @ 10.0A	1	0.6
GBLC18I	F	18.0	20.0	29.0	45.0V @ 8.0A	1	0.6
GBLC18CI	FC	18.0	20.0	29.0	45.0V @ 8.0A	1	0.6
GBLC24I	H	24.0	26.7	43.0	56.0V @ 6.0A	1	0.6
GBLC24CI	HC	24.0	26.7	43.0	56.0V @ 6.0A	1	0.6

Note 1: Part numbers with an additional "C" suffix are bidirectional devices, i.e., GBLC05CI.

Note 2: For Bidirectional Devices Only: Electrical characteristics apply in both directions.

FIGURE 1
PEAK PULSE POWER VS PULSE TIME

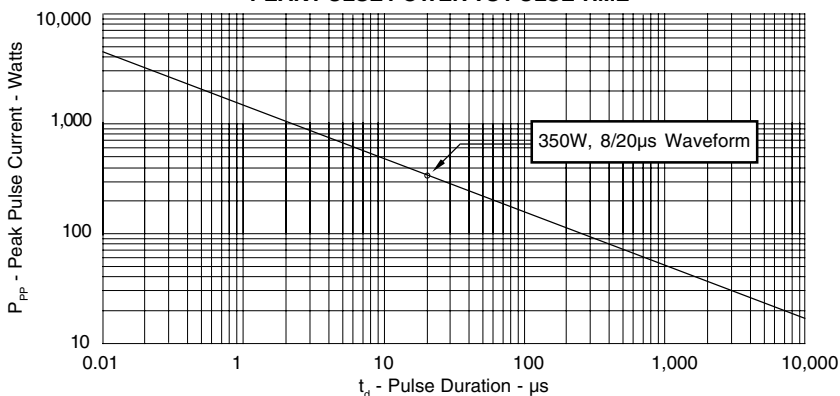
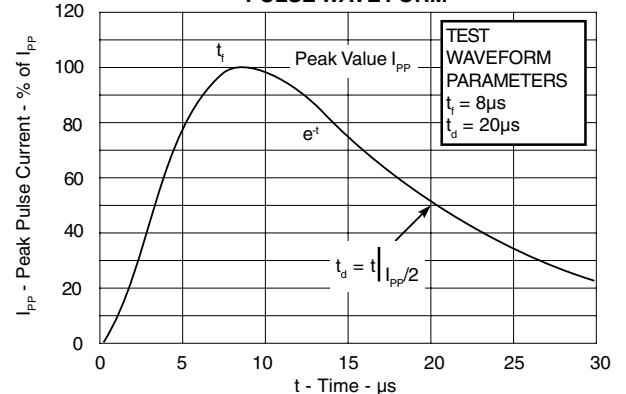


FIGURE 2
PULSE WAVE FORM

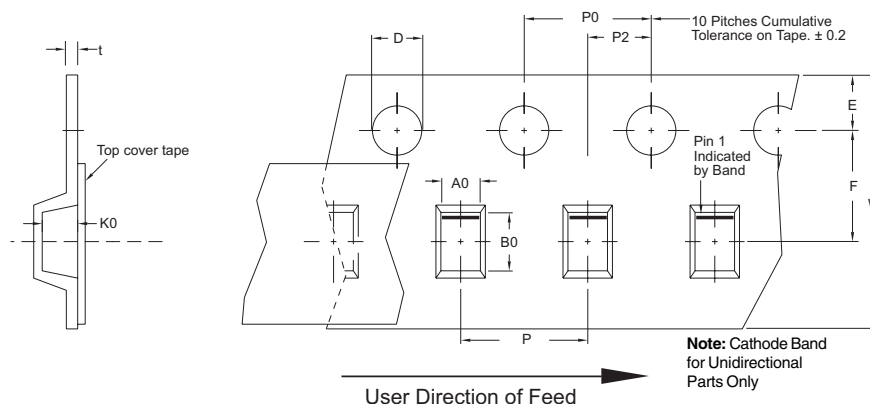


PACKAGE OUTLINE & DIMENSIONS

<div>PACKAGE OUTLINE</div> <div></div>	<div>SOD-323 PACKAGE</div> <div></div>																																												
	<div>PACKAGE DIMENSIONS</div> <table><tr><th rowspan="2">DIM</th><th colspan="2">MILLIMETERS</th><th colspan="2">INCHES</th></tr><tr><th>MIN</th><th>MAX</th><th>MIN</th><th>MAX</th></tr><tr><td>A</td><td>1.60</td><td>1.90</td><td>0.063</td><td>0.075</td></tr><tr><td>B</td><td>1.15</td><td>1.45</td><td>0.045</td><td>0.057</td></tr><tr><td>C</td><td>2.39</td><td>2.70</td><td>0.094</td><td>0.106</td></tr><tr><td>D</td><td>0.92</td><td>1.10</td><td>0.036</td><td>0.043</td></tr><tr><td>E</td><td>0.25</td><td>0.40</td><td>0.010</td><td>0.016</td></tr><tr><td>F</td><td>0.10</td><td>0.20</td><td>0.004</td><td>0.008</td></tr><tr><td>H</td><td>-</td><td>0.10</td><td>-</td><td>0.004</td></tr></table>	DIM	MILLIMETERS		INCHES		MIN	MAX	MIN	MAX	A	1.60	1.90	0.063	0.075	B	1.15	1.45	0.045	0.057	C	2.39	2.70	0.094	0.106	D	0.92	1.10	0.036	0.043	E	0.25	0.40	0.010	0.016	F	0.10	0.20	0.004	0.008	H	-	0.10	-	0.004
DIM	MILLIMETERS		INCHES																																										
	MIN	MAX	MIN	MAX																																									
A	1.60	1.90	0.063	0.075																																									
B	1.15	1.45	0.045	0.057																																									
C	2.39	2.70	0.094	0.106																																									
D	0.92	1.10	0.036	0.043																																									
E	0.25	0.40	0.010	0.016																																									
F	0.10	0.20	0.004	0.008																																									
H	-	0.10	-	0.004																																									
<div>MOUNTING PAD</div> <div></div>	<div>NOTES</div> <div>1. Controlling Dimensions in Millimeters.</div> <div>2. Dimensions are exclusive of mold flash and metal burrs.</div> <div>TAPE & REEL ORDERING NOMENCLATURE</div> <div>1. Surface mount product is taped and reeled in accordance with EIA-481.</div> <div>2. Suffix -T7 = 7 Inch Reel - 3,000 pieces per 8mm tape, i.e., <i>GBLC05I-T7</i>.</div> <div>3. Suffix -LF = Lead-Free, Pure-Tin Plating, i.e., <i>GBLC05CI-LF-T7</i>.</div> <div>Outline & Dimensions: Rev 2 - 9/05, 06010</div>																																												

Tape & Reel Specifications (Dimensions in millimeters)

Reel Dia.	Tape Width	A0	B0	K0	D	E	F	W	P0	P2	P	tmax
178mm (7")	8mm	1.55 ± 0.10	2.90 ± 0.10	1.35 ± 0.10	1.50 ± 0.10	1.75 ± 0.10	3.50 ± 0.05	8.00 ± 0.30	4.00 ± 0.10	2.00 ± 0.05	4.00 ± 0.10	0.25



COPYRIGHT © ProTek Devices 2005

SPECIFICATIONS: ProTek reserves the right to change the electrical and or mechanical characteristics described herein without notice (except JEDEC).

DESIGN CHANGES: ProTek reserves the right to discontinue product lines without notice, and that the final judgement concerning selection and specifications is the buyer's and that in furnishing engineering and technical assistance, ProTek assumes no responsibility with respect to the selection or specifications of such products.

ProTek Devices
 2929 South Fair Lane, Tempe, AZ 85282
 Tel: 602-431-8101 Fax: 602-431-2288
 E-Mail: sales@protekdevices.com
 Web Site: www.protekdevices.com