



---

## Infrared Remote Control Transmitter

PT2221/2

---

### DESCRIPTION

The PT2221 and PT2222 are remote control transmitters utilizing CMOS Technology specially designed for use on infrared remote control applications. They are pin-to-pin compatible with NEC  $\mu$ PD6121 and  $\mu$ PD6122 respectively. PT2221 is packaged in 20 pins SO and capable of controlling 32 functions and 3 double keys. PT2222, on the other hand, is housed in 24 pins SO and capable of controlling 64 function keys and 3 double keys. PT2221/2 may be paired with PT2225 to construct a powerful remote control system.

### FEATURES

- ☐ CMOS Technology
- ☐ Low Power Consumption ( $V_{DD}=2.0 \sim 5.5V$ )
- ☐ Pin-to-Pin Compatible with  $\mu$ PD6121/ $\mu$ PD6122
- ☐ Using SEL pin, PT2221 can support 64+6 function codes
- ☐ Using SEL pin, PT2222 can support 128 + 6 function codes
- ☐ Customer Code can be selected (please contact PTC for details)

### APPLICATIONS

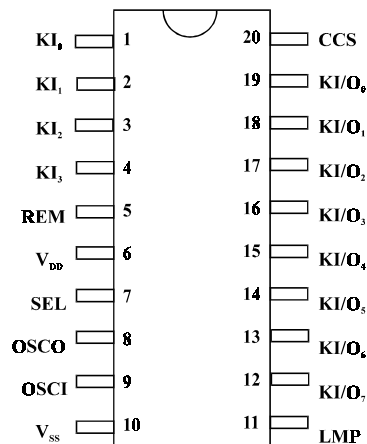
- ☐ Audio Equipment
- ☐ Television (TV)
- ☐ Cable TV Tuner
- ☐ Video Cassette Recorder (VCR)
- ☐ Cassette Deck
- ☐ Air Conditioner
- ☐ Video Compact Disk (VCD)
- ☐ DVD ROM/Player
- ☐ Moniputer / Multi-Media Personal Computer System



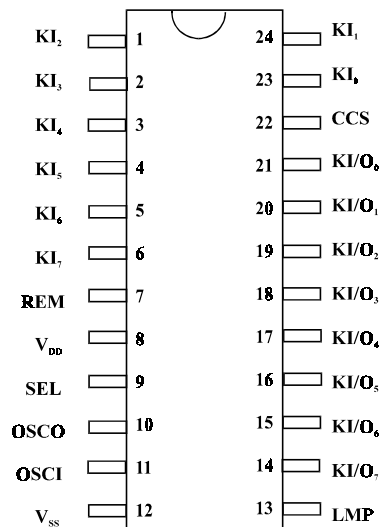
## Infrared Remote Control Transmitter

PT2221/2

### PIN CONFIGURATION



PT 2221- 00X

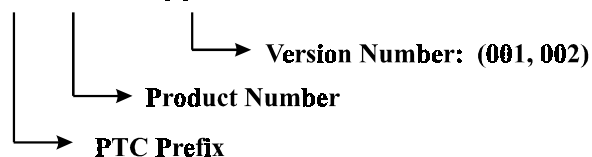


PT 2222 - 00X

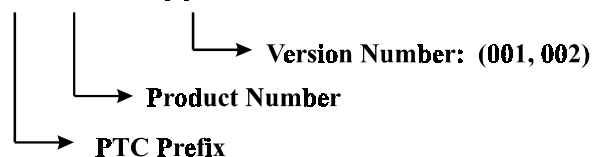
### ORDER INFORMATION

Valid Part Number	Package
PT2221-001	20 Pins, SO
PT2221-002	20 Pins, SO
PT2222-001	24 Pins, SO
PT2222-002	24 Pins, SO

#### PT 2221 - 00X



#### PT 2222 - 00X

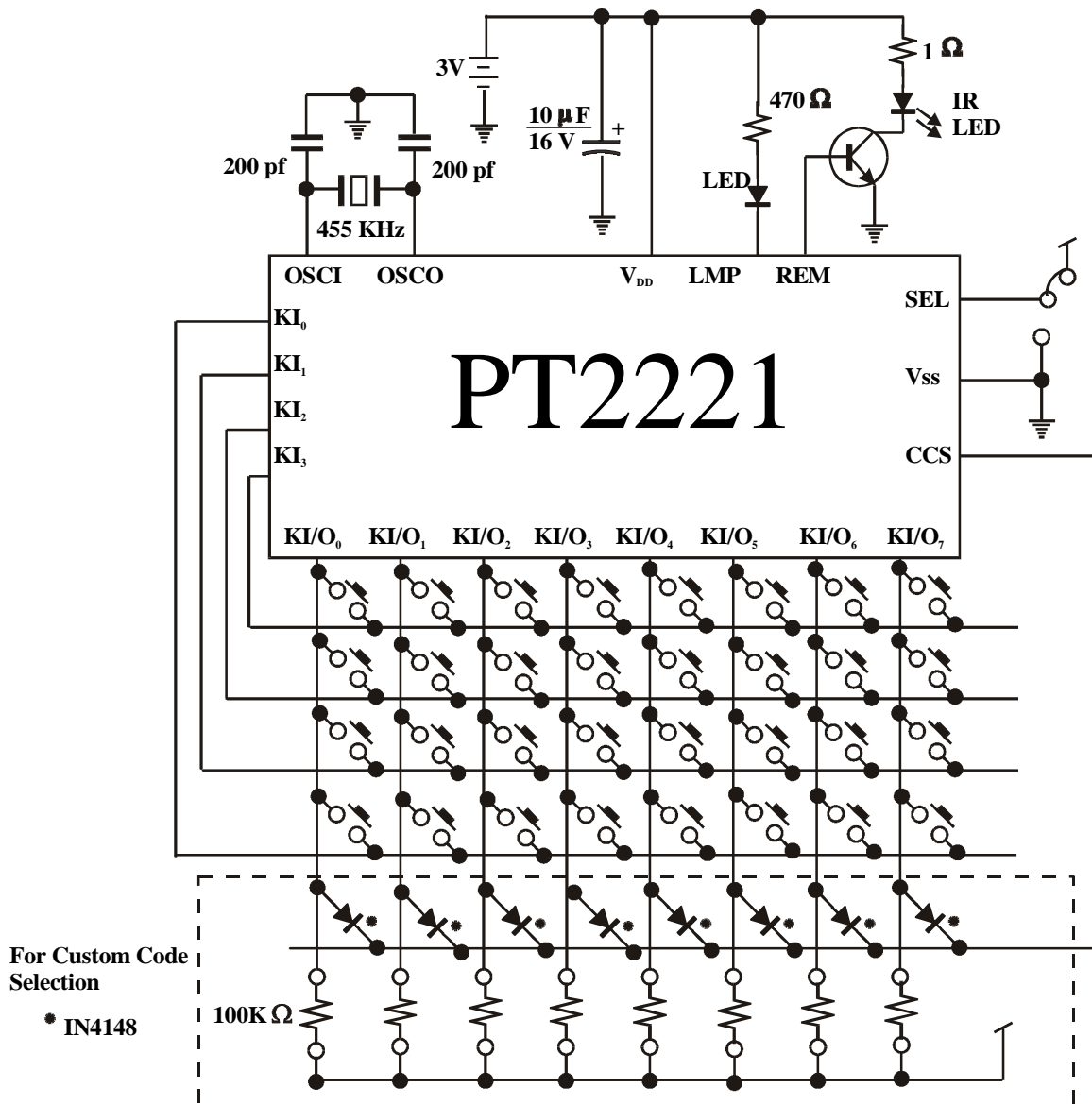




## Infrared Remote Control Transmitter

PT2221/2

### PT2221 APPLICATION CIRCUIT



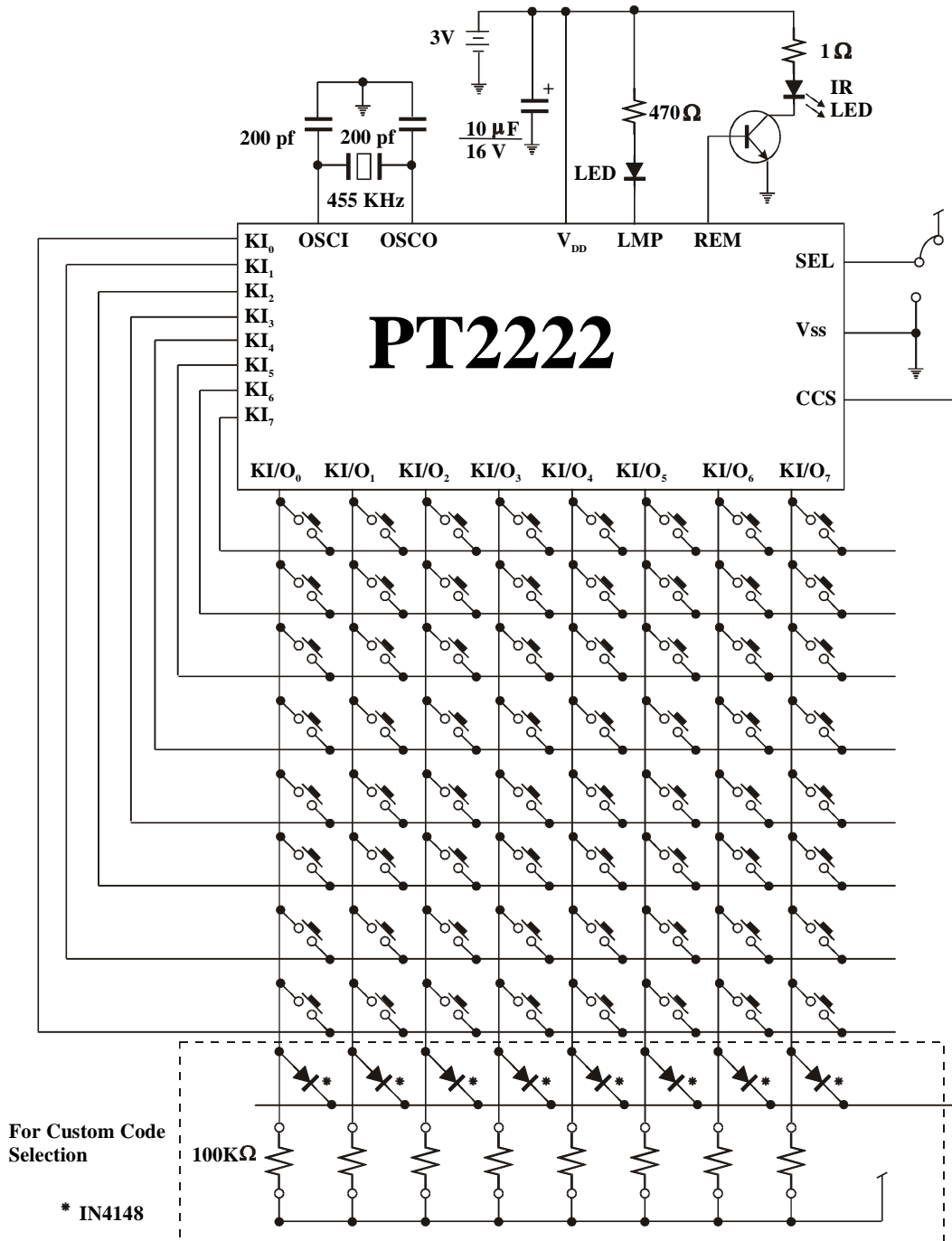
Note: The V<sub>CC</sub> and V<sub>SS</sub> Terminals must be "SHORT" before the batteries are loaded to the transmitter handset to insure that PT2221 Power On Reset Function will operate properly.



## Infrared Remote Control Transmitter

PT2221/2

### PT2222 APPLICATION CIRCUIT



Note: The Vcc and Vss Terminals must be "SHORT" before the batteries are loaded to the transmitter handset to insure that PT2222 Power On Reset Function will operate properly.