

## MMBA SERIES

## ◆FEATURES

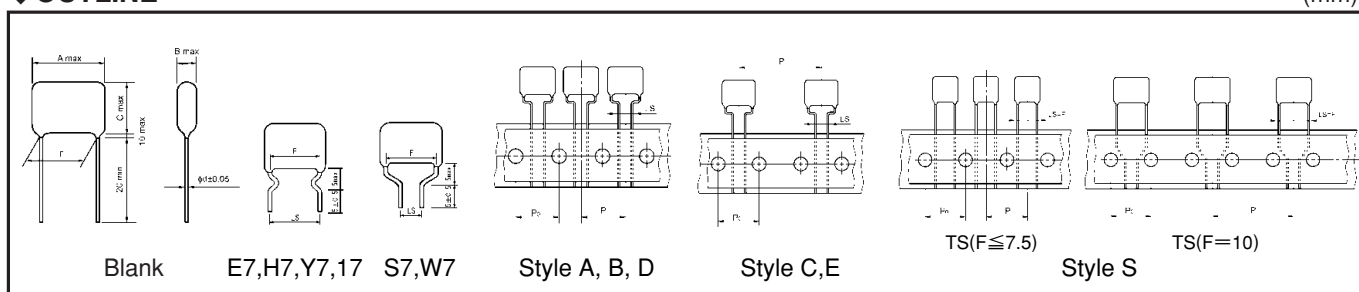
- Small and light.
- Reliability is excellent because these capacitors provide self-healing.
- Coated with flame-retardant (UL94 V-0) epoxy resin.
- RoHS compliance.



## ◆ SPECIFICATIONS

Category temperature	-40°C ~ +85°C
Rated voltage (U <sub>R</sub> )	125VAC, 250VAC
Capacitance tolerance	±10%(K), ±20%(M)
tan δ	0.01max at 1kHz
Voltage proof	U <sub>R</sub> × 230% 60s
Insulation resistance	9000MΩ min
Reference standard	JIS C 5101-1

## ◆ OUTLINE



**◆PART NUMBER**



Symbol	$U_R$
125	125VAC
250	250VAC

Symbol	Tolerance
K	$\pm 10\%$
M	$\pm 20\%$

Symbol	Lead style	Symbol	Lead style
Blank	Long lead type	TC	Style A, Ammo pack P=12.7 Po=12.7 LS=5.0
E7	Lead forming cut LS=7.5	TX	Style B, Ammo pack P=15.0 Po=15.0 LS=5.0
H7	Lead forming cut LS=10.0	TL(F=10) TJ(F≥15)	Style C, Ammo pack P=25.4 Po=12.7 LS=5.0
Y7	Lead forming cut LS=15.0	TH	Style D, Ammo pack P=15.0 Po=15.0 LS=7.5
17	Lead forming cut LS=22.5	TN	Style E, Ammo pack P=30.0 Po=15.0 LS=7.5
S7	Lead forming cut LS=5.0	TS(F≤7.5)	Style S, Ammo pack P=12.7 Po=12.7
W7	Lead forming cut LS=7.5	TS(F=10)	Style S, Ammo pack P=25.4 Po=12.7

**◆DIMENSIONS AND QUANTITY**
**◆RATED VOLTAGE : 125VAC**

Part No.	cap(μF)	Dimensions (mm)						Typical Packaging Quantity (pcs)						
								Long Lead type		Taping Ammo pack type - style				
		A	B	C	F±1.0	LS±0.5	d	Bag	Carton	A TC	B, D TX, TH	C TL, TJ	E TN	S TS
125MMBA103□**	0.01	10.0	5.5	9.5	7.5	5.0/7.5	0.5	200	6,000	1,000	1,000	—	—	1,000
125MMBA123□**	0.012	10.0	5.5	9.5	7.5	5.0/7.5	0.5	200	6,000	1,000	1,000	—	—	1,000
125MMBA153□**	0.015	10.0	5.5	9.5	7.5	5.0/7.5	0.5	200	6,000	1,000	1,000	—	—	1,000
125MMBA183□**	0.018	10.0	5.5	9.5	7.5	5.0/7.5	0.5	200	6,000	1,000	1,000	—	—	1,000
125MMBA223□**	0.022	10.0	5.5	9.5	7.5	5.0/7.5	0.5	200	6,000	1,000	1,000	—	—	1,000
125MMBA273□**	0.027	10.0	5.5	9.5	7.5	5.0/7.5	0.5	200	6,000	1,000	1,000	—	—	1,000
125MMBA333□**	0.033	10.0	5.5	9.5	7.5	5.0/7.5	0.5	200	6,000	1,000	1,000	—	—	1,000
125MMBA393□**	0.039	10.0	5.5	10.0	7.5	5.0/7.5	0.5	200	5,000	1,000	1,000	—	—	1,000
125MMBA473□**	0.047	10.0	6.0	10.5	7.5	5.0/7.5	0.5	200	5,000	1,000	1,000	—	—	1,000
125MMBA563□**	0.056	10.0	6.0	11.0	7.5	5.0/7.5	0.5	200	4,000	1,000	1,000	—	—	1,000
125MMBA683□**	0.068	10.0	6.0	12.5	7.5	5.0/7.5	0.5	200	4,000	1,000	1,000	—	—	1,000
125MMBA823□**	0.082	10.0	6.5	13.0	7.5	5.0/7.5	0.5	200	4,000	1,000	1,000	—	—	1,000
125MMBA104□**	0.1	10.0	6.0	9.0	7.5	5.0/7.5	0.5	200	6,000	1,000	1,000	—	—	1,000
125MMBA124□**	0.12	10.0	6.0	9.0	7.5	5.0/7.5	0.5	200	6,000	1,000	1,000	—	—	1,000
125MMBA154□**	0.15	10.0	6.5	10.0	7.5	5.0/7.5	0.5	200	5,000	1,000	1,000	—	—	1,000
125MMBA184□**	0.18	10.0	6.5	11.0	7.5	5.0/7.5	0.5	200	5,000	1,000	1,000	—	—	1,000
125MMBA224□**	0.22	10.0	6.5	11.5	7.5	5.0/7.5	0.5	200	4,000	1,000	1,000	—	—	1,000
125MMBA274□**	0.27	12.5	6.0	11.5	10.0	5.0/7.5/10.0	0.6	200	4,000	—	1,000	500	—	500
125MMBA334□**	0.33	12.5	6.5	12.0	10.0	5.0/7.5/10.0	0.6	200	3,000	—	1,000	500	—	500
125MMBA394□**	0.39	12.5	7.0	12.5	10.0	5.0/7.5/10.0	0.6	200	3,000	—	500	500	—	500
125MMBA474□**	0.47	12.5	7.5	13.5	10.0	5.0/7.5/10.0	0.6	100	2,000	—	500	500	—	500
125MMBA564□**	0.56	12.5	7.5	15.0	10.0	5.0/7.5/10.0	0.6	100	2,000	—	500	400	—	400
125MMBA684□**	0.68	12.5	8.0	15.5	10.0	5.0/7.5/10.0	0.6	100	2,000	—	500	400	—	400
125MMBA824□**	0.82	17.5	7.5	14.0	15.0	5.0/7.5/15.0	0.6	100	2,000	—	—	400	400	—
125MMBA105□**	1.0	17.5	8.0	15.0	15.0	5.0/7.5/15.0	0.6	100	1,500	—	—	400	400	—

□ : Tolerance (K:±10%, M:±20%)      \*\*: Suffix

**◆RATED VOLTAGE : 250VAC**

Part No.	cap(μF)	Dimensions (mm)						Typical Packaging Quantity (pcs)						
								Long Lead type		Taping Ammo pack type - style				
		A	B	C	F±1.0	LS±0.5	d	Bag	Carton	A TC	B, D TX, TH	C TL, TJ	E TN	S TS
250MMBA103□**	0.01	12.5	5.0	9.0	10.0	5.0/7.5/10.0	0.6	200	5,000	—	1,000	500	—	500
250MMBA123□**	0.012	12.5	5.5	9.5	10.0	5.0/7.5/10.0	0.6	200	5,000	—	1,000	500	—	500
250MMBA153□**	0.015	12.5	6.0	10.0	10.0	5.0/7.5/10.0	0.6	200	4,000	—	1,000	500	—	500
250MMBA183□**	0.018	12.5	6.0	10.0	10.0	5.0/7.5/10.0	0.6	200	4,000	—	1,000	500	—	500
250MMBA223□**	0.022	12.5	5.5	9.5	10.0	5.0/7.5/10.0	0.6	200	4,000	—	1,000	500	—	500
250MMBA273□**	0.027	12.5	5.5	11.0	10.0	5.0/7.5/10.0	0.6	200	4,000	—	1,000	500	—	500
250MMBA333□**	0.033	12.5	5.5	11.0	10.0	5.0/7.5/10.0	0.6	200	4,000	—	1,000	500	—	500
250MMBA393□**	0.039	12.5	6.0	11.5	10.0	5.0/7.5/10.0	0.6	200	4,000	—	1,000	500	—	500
250MMBA473□**	0.047	12.5	6.5	12.0	10.0	5.0/7.5/10.0	0.6	200	3,000	—	1,000	500	—	500
250MMBA563□**	0.056	18.0	5.5	11.0	15.0	5.0/7.5/15.0	0.6	200	3,000	—	—	500	400	—
250MMBA683□**	0.068	18.0	6.0	11.0	15.0	5.0/7.5/15.0	0.6	100	3,000	—	—	500	400	—
250MMBA823□**	0.082	18.0	6.0	11.5	15.0	5.0/7.5/15.0	0.6	100	3,000	—	—	500	400	—
250MMBA104□**	0.1	18.0	6.0	13.0	15.0	5.0/7.5/15.0	0.6	100	2,000	—	—	500	400	—
250MMBA124□**	0.12	18.0	7.0	13.5	15.0	5.0/7.5/15.0	0.8	100	2,000	—	—	500	400	—
250MMBA154□**	0.15	18.0	7.5	14.5	15.0	5.0/7.5/15.0	0.8	100	1,500	—	—	400	400	—
250MMBA184□**	0.18	18.0	8.0	15.0	15.0	5.0/7.5/15.0	0.8	100	1,500	—	—	400	400	—
250MMBA224□**	0.22	18.0	9.0	15.5	15.0	5.0/7.5/15.0	0.8	100	1,500	—	—	400	300	—
250MMBA274□**	0.27	25.5	7.0	16.0	22.5	22.5	0.8	50	1,500	—	—	—	—	—
250MMBA334□**	0.33	25.5	8.0	16.5	22.5	22.5	0.8	200	1,000	—	—	—	—	—
250MMBA394□**	0.39	25.5	8.5	17.0	22.5	22.5	0.8	200	1,000	—	—	—	—	—
250MMBA474□**	0.47	25.5	9.0	18.0	22.5	22.5	0.8	200	800	—	—	—	—	—
250MMBA564□**	0.56	25.5	9.0	20.0	22.5	22.5	0.8	200	800	—	—	—	—	—
250MMBA684□**	0.68	25.5	10.3	21.0	22.5	22.5	0.8	100	500	—	—	—	—	—
250MMBA824□**	0.82	31.0	9.8	20.5	27.5	—	0.8	100	500	—	—	—	—	—
250MMBA105□**	1.0	31.0	11.0	22.0	27.5	—	0.8	100	500	—	—	—	—	—

□ : Tolerance (K:±10%, M:±20%)      \*\*: Suffix

Note) 1. Operating circuit (Fig.1, Fig.2)

2. When operating capacitor for noise suppression, voltage of pulse applied to the capacitor shall be within value specified in Table 1.

Fig.1

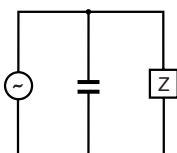


Fig.2

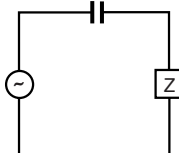


Table 1

Rated Voltage	Pulse Voltage
125VAC	250Vo-p
250VAC	630Vo-p

◆ PERMISSIBLE CURRENT FOR FREQUENCY

