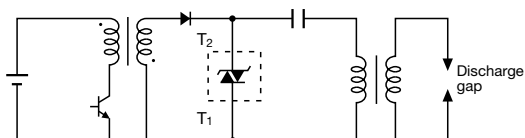


PNPN Switch

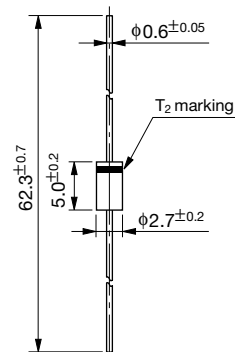
ET013, ET014, ET015, ET020

Example of application circuit (ignition)



External Dimensions

(Unit: mm)



Weight: Approx. 2.6g

Absolute Maximum Ratings

Parameter	Symbol	Ratings				Unit	Conditions
		ET013	ET014	ET015	ET020		
Repetitive peak off-state voltage	V_{DRM}	90	115	115	170	V	
RMS on-state current	$I_T(RMS)$	0.6				A	DC, $T_J \leq 112^\circ\text{C}$
Surge on-state current	I_{TSM}	80				A	$T_a = 25^\circ\text{C}$, $W_p = 10\mu\text{s}$, Full-cycle sine wave, 1 cycle, Peak value, $f = 50\text{Hz}$
Rate-of-rise of on-state current	di_T/dt	30				A/ μsec .	
Junction temperature	T_J	-40 to $+125$				$^\circ\text{C}$	
Storage temperature	T_{stg}	-40 to $+125$				$^\circ\text{C}$	

Electrical Characteristics

Parameter	Symbol	Ratings				Unit	Conditions
		ET013	ET014	ET015	ET020		
Breakeover voltage	V _{BO}	120 to 138	133 to 147	142 to 157	190 to 210	V	
Breakeover current	I _{BO}	150max	100max			μA	
On-state voltage	V _T	±2.5				V	I _T =±10A