

# Schottky Barrier Diodes 30V

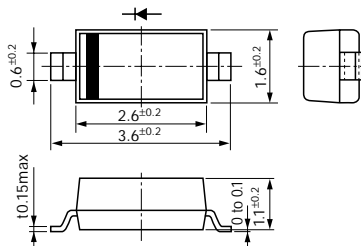
V <sub>RM</sub> (V)	Package	Part Number	I <sub>F</sub> (AV) (A)	I <sub>FSM</sub> (A)	T <sub>J</sub> (°C)	T <sub>stg</sub> (°C)	V <sub>F</sub> (V) max		I <sub>R</sub> (mA)	I <sub>R</sub> (H) (mA)	R <sub>th</sub> (j-ℓ) R <sub>th</sub> (j-c) (°C/W)	Mass (g)	Fig. No.	Page where characteristic curve is shown	
				50Hz Half-cycle Sinewave Single Shot				I <sub>F</sub> (A)	V <sub>R</sub> = V <sub>RM</sub> max	V <sub>R</sub> = V <sub>RM</sub> max					T <sub>a</sub> (°C)
30	Surface Mount	MI1A3	1.0	12	-40 to +150	0.47	1.0	1	70	150 (T <sub>J</sub> )	70	0.011	1	82	
		MI2A3 *	1.0	12	-40 to +125	0.39	1.0	2	110	125 (T <sub>J</sub> )	70	0.011			
		SFPA-53	1.0	30	-40 to +125	0.36	1.0	1.5	70	100	20	0.072	2		
		SFPJ-53 *	1.0	30	-40 to +150	0.45	1.0	1.0	35	150	20	0.072			
		SFPA-63	2.0	40	-40 to +125	0.36	2.0	3.0	140	100	20	0.072			
		SFPE-63 *	2.0	40	-40 to +150	0.55	2.0	0.2	20	150 (T <sub>J</sub> )	20	0.072			
		SFPJ-63	2.0	40	-40 to +150	0.45	2.0	2.0	70	150	20	0.072			
		SFPA-73	3.0	50	-40 to +125	0.36	3.0	4.5	210	100	20	0.072			
		SFPJ-73	3.0	50	-40 to +150	0.45	3.0	3.0	100	150	20	0.072			
		SPJ-G53S	5.0	100	-40 to +150	0.45	5.0	5.0	250	150	5	0.29			
	Surface Mount Center-tap	SPJ-63S	6.0	50	-40 to +150	0.45	3.0	3	100	150 (T <sub>J</sub> )	5	0.29	3		
	Axial	AK 03	1.0	25	-40 to +150	0.55	1.0	1	50	100 (T <sub>J</sub> )	22	0.13	4	85	
		EA 03	1.0	30	-40 to +125	0.36	1.0	1.5	70	100	20	0.3	5	—	
		EK 03	1.0	40	-40 to +150	0.55	1.0	5	50	100	20	0.3			
		EK 13	1.5	40	-40 to +150	0.55	2.0	5	50	100	17	0.3	6	86	
		RK 13	1.7	60	-40 to +150	0.55	2.0	5	50	100	15	0.45	7	87	
		RA 13	2.0	40	-40 to +125	0.36	2.0	3	140	100	15	0.45		—	
		RK 33	2.5	50	-40 to +150	0.55	2.5	5	50	100	12	0.6	8	87	
		RJ 43	3.0	50	-40 to +150	0.45	3.0	3	100	150	8	1.2		9	—
		RK 43	3.0	80	-40 to +150	0.55	3.0	5	50	100	8	1.2	88		
	Center-tap	FMJ-23L	10	100	-40 to +150	0.45	5.0	5	250	150 (T <sub>J</sub> )	4	2.1	10	93	
		FMJ-2203	20	150	-40 to +150	0.47	10.0	10	350	150	4	2.1		—	
		FMJ-2303	30	150	-40 to +150	0.48	15.0	15	500	150	4	2.1			

## External Dimensions

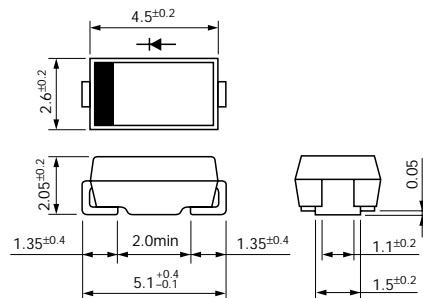
Flammability: UL94V-0 or Equivalent (Unit: mm)

\* : Under development

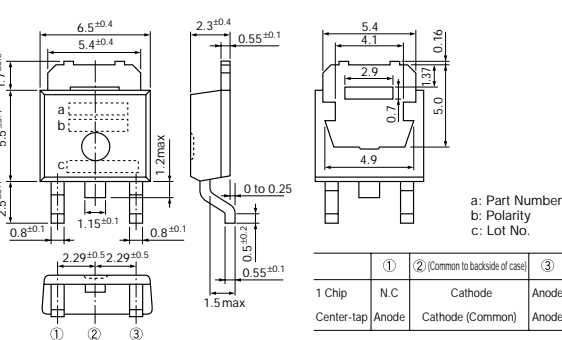
1



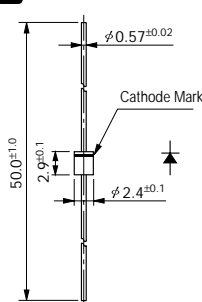
2



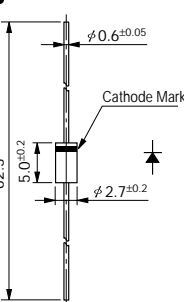
3



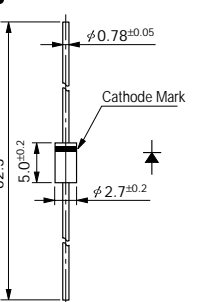
4



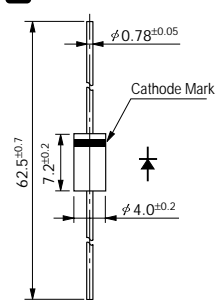
5



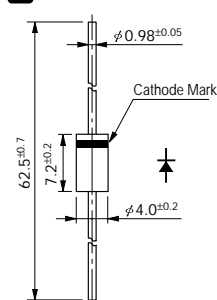
6



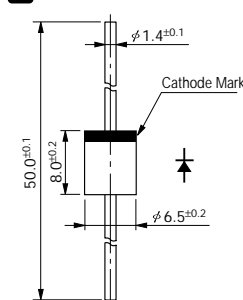
7



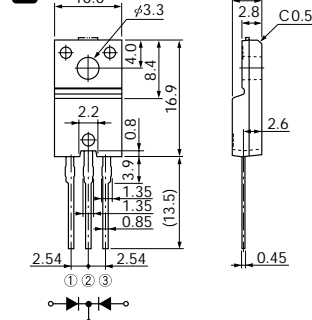
8



9

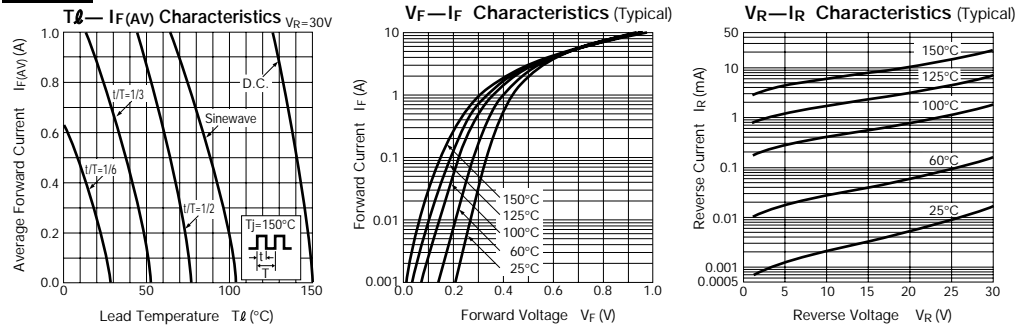


10

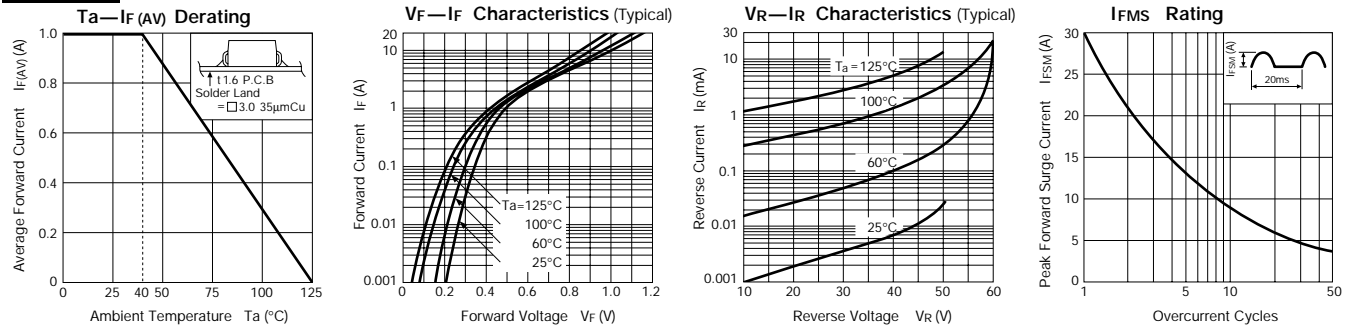


# Schottky Barrier Diodes

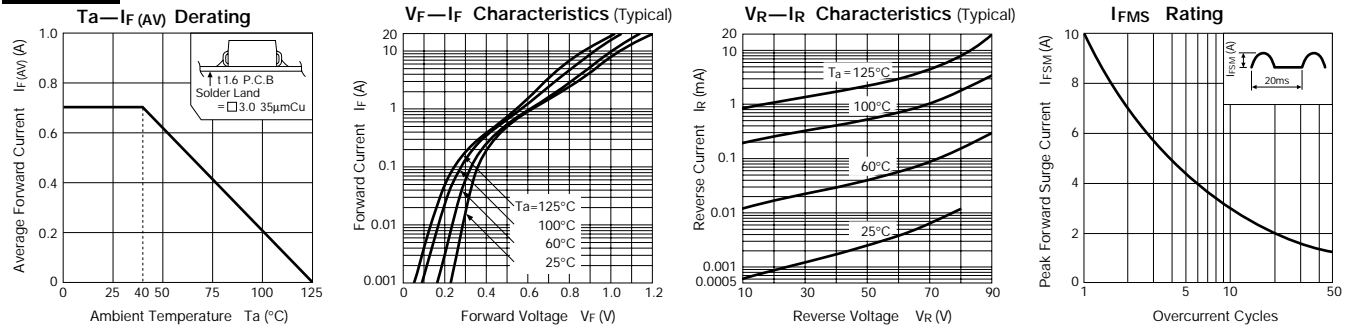
## MI1A3



## SFPB-54



## SFPB-56



## SFPB-59

