

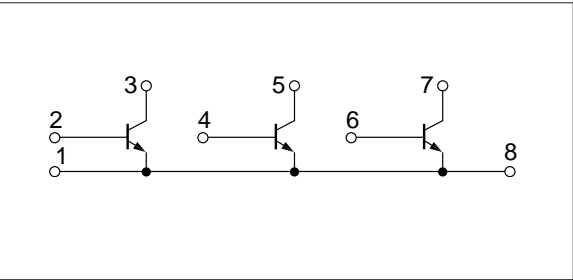
Absolute maximum ratings (T_a=25°C)

Symbol	Ratings	Unit
V _{CB0}	60	V
V _{CEO}	60	V
V _{EBO}	6	V
I _C	3	A
I _{CP}	6 (PW≤10ms, D _u ≤50%)	A
P _T	3 (T _a =25°C) 15 (T _c =25°C)	W
T _j	150	°C
T _{stg}	-40 to +150	°C

Electrical characteristics (T_a=25°C)

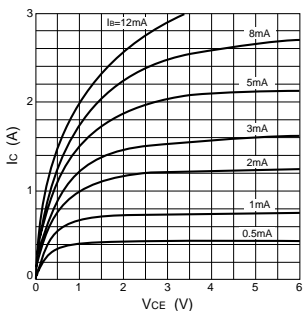
Symbol	Specification			Unit	Conditions
	min	typ	max		
I _{CBO}			100	μA	V _{CB} =60V
I _{EBO}			100	μA	V _{EB} =6V
V _{CEO}	60			V	I _C =25mA
h _{FE}	300				V _{CE} =4V, I _C =0.5A
V _{CE(sat)}			1.0	V	I _C =1A, I _B =10mA
t _{on}		0.8		μs	V _{CC} ≐20V, I _C =1A, I _{B1} =15mA, I _{B2} =-30mA
t _{stg}		3.0		μs	
t _f		1.2		μs	

■Equivalent circuit diagram

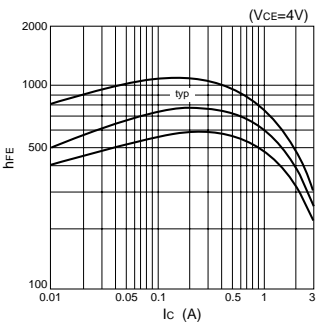


■ Characteristic curves

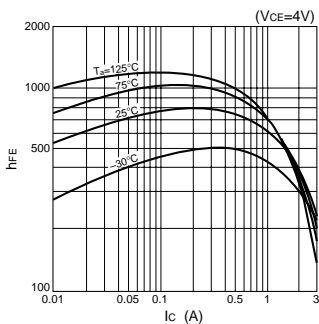
I_C-V_{CE} Characteristics (Typical)



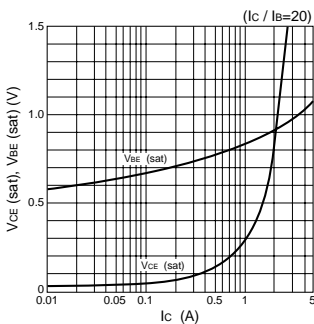
h_{FE}-I_C Characteristics (Typical)



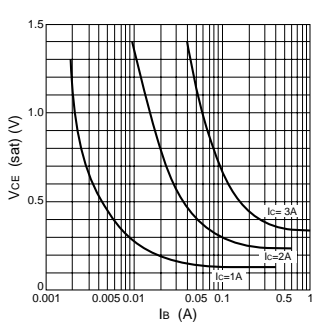
h_{FE}-I_C Temperature Characteristics (Typical)



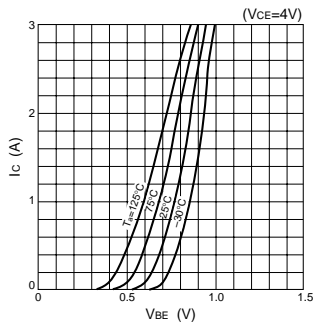
V_{CE(sat)}, V_{BE(sat)}-I_C Characteristics (Typical)



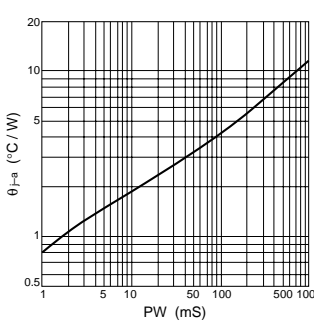
V_{CE(sat)}-I_B Characteristics (Typical)



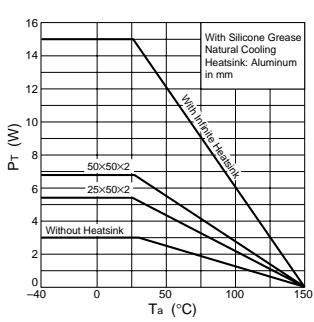
I_C-V_{BE} Temperature Characteristics (Typical)



θ_{JA}-PW Characteristics



P_T-T_a Characteristics



Safe Operating Area (SOA)

