

Absolute maximum ratings

($T_a=25^\circ\text{C}$)

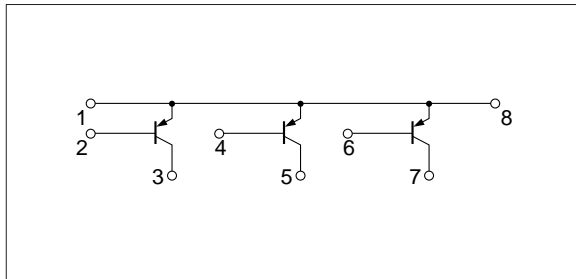
Symbol	Ratings	Unit
V_{CB0}	-50	V
V_{CE0}	-50	V
V_{EB0}	-5	V
I_C	-3	A
I_{CP}	-5 (PW \leq 1ms, $D_u\leq$ 50%)	A
I_B	-1	A
P_T	3 ($T_a=25^\circ\text{C}$)	W
	15 ($T_c=25^\circ\text{C}$)	
T_j	150	$^\circ\text{C}$
T_{stg}	-40 to +150	$^\circ\text{C}$

Electrical characteristics

($T_a=25^\circ\text{C}$)

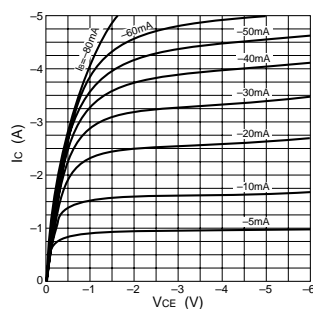
Symbol	Specification			Unit	Conditions
	min	typ	max		
I_{CBO}			-10	μA	$V_{CB}=-50\text{V}$
I_{EBO}			-10	μA	$V_{EB}=-8\text{V}$
V_{CE0}	-50			V	$I_C=-25\text{mA}$
h_{FE}	100		350		$V_{CE}=-4\text{V}$, $I_C=-1\text{A}$
$V_{CE(sat)}$			-1.0	V	$I_C=-2\text{A}$, $I_B=-40\text{mA}$
$V_{BE(sat)}$			-1.5	V	

Equivalent circuit diagram

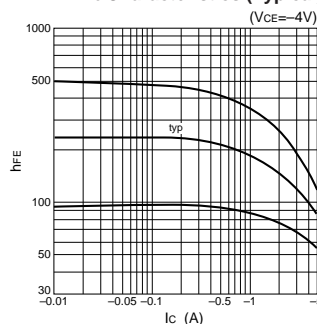


Characteristic curves

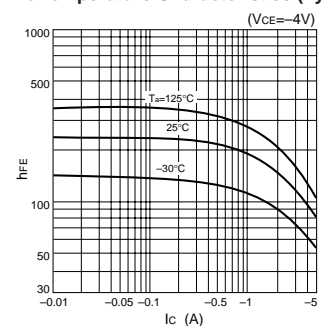
I_C - V_{CE} Characteristics (Typical)



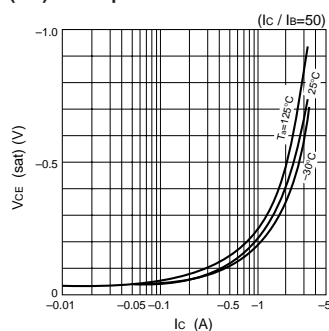
h_{FE} - I_C Characteristics (Typical)



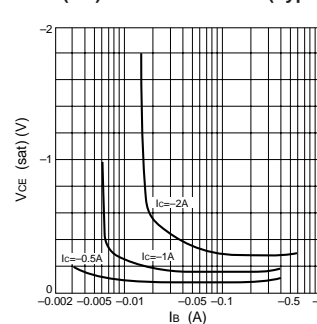
h_{FE} - I_C Temperature Characteristics (Typical)



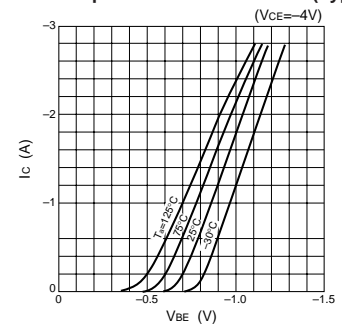
$V_{CE(sat)}$ - I_C Temperature Characteristics (Typical)



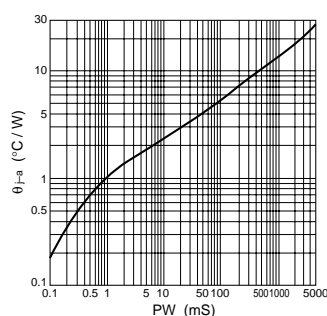
$V_{CE(sat)}$ - I_B Characteristics (Typical)



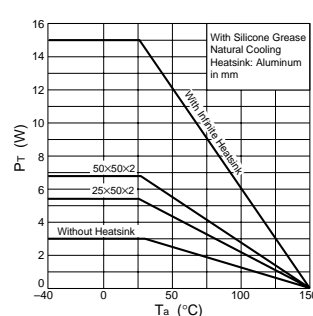
I_C - V_{BE} Temperature Characteristics (Typical)



θ_{JA} -PW Characteristics



P_T - T_a Characteristics



Safe Operating Area (SOA)

