

SANYO

No.2277A

LA3607**7-Band Graphic Equalizer****Features**

- 7-band graphic equalizer for one channel can be formed easily by externally connecting capacitors and variable resistors which fix f_0 (resonance frequency).
- Series connection of the LA3607 makes multiband available.
- Boost, cut amount can be varied by external resistors.
- Highly stable to capacitive load

Maximum Ratings at $T_a=25^\circ\text{C}$

			unit
Maximum Supply Voltage	$V_{CC\text{max}}$	20	V
Allowable Power Dissipation	$P_{d\text{max}}$ LA3607	300	mW
Operating Temperature	T_{opr}	-20 to +75	$^\circ\text{C}$
Storage Temperature	T_{stg}	-40 to +125	$^\circ\text{C}$

Operating Conditions at $T_a=25^\circ\text{C}$

			unit
Recommended Supply Voltage	V_{CC}	8	V
Operating Voltage Range	V_{CCop}	5 to 15	V

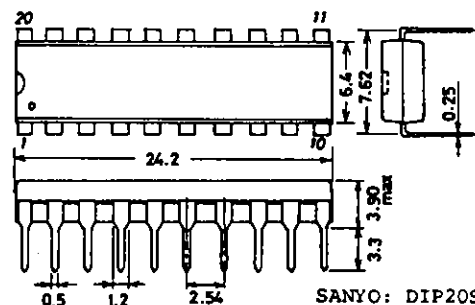
Operating Characteristics at $T_a=25^\circ\text{C}$, $V_{CC}=8\text{V}$, $R_L=10\text{k}\Omega$, $R_g=600\Omega$,

		See specified Test Circuit.	min	typ	max	unit
Quiescent Current	I_{CCO} Quiescent			7	9	mA
Voltage Gain	VG $f=1\text{kHz}$, $V_{IN}=-10\text{dB}$ at all flat mode		-3.8	-0.8	2.2	dB
Boost Amount	BOOST $f=60\text{Hz}$	$V_o=-10\text{dB}$ is taken as 0dB at all flat mode at $f=1\text{kHz}$.	10	12	14	dB
	$f=150\text{Hz}$		10	12	14	dB
	$f=400\text{Hz}$		10	12	14	dB
	$f=1\text{kHz}$		10	12	14	dB
	$f=2.5\text{kHz}$		10	12	14	dB
	$f=6\text{kHz}$		10	12	14	dB
	$f=15\text{kHz}$		10	12	14	dB

Continued on next page.

**Package Dimensions
(unit: mm)**

3021B

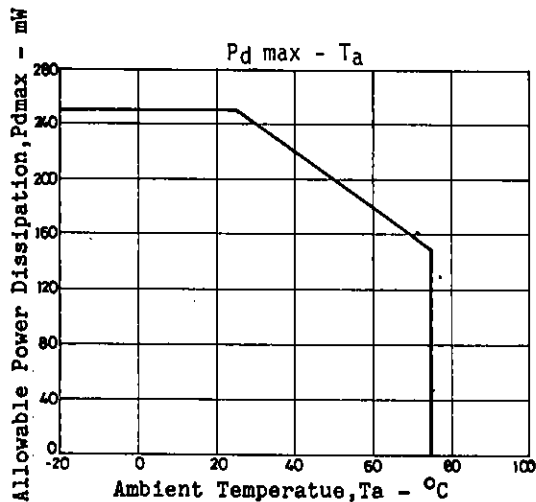


SANYO Electric Co., Ltd. Semiconductor Business Headquarters
 TOKYO OFFICE Tokyo Bldg., 1-10, 1 Chome, Ueno, Taito-ku, TOKYO, 110 JAPAN

8270TS/0137KI/8236KI, TS No.2277-1/6

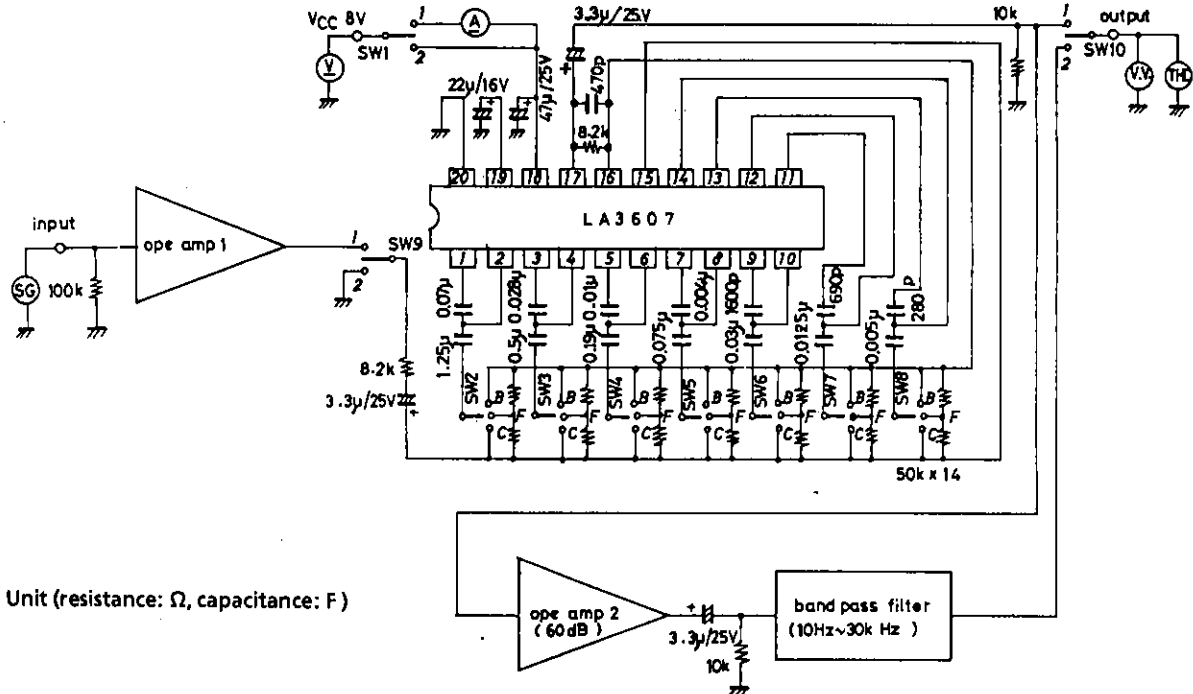
Continued from preceding page.

Cut Amount	CUT	f=60Hz f=150Hz f=400Hz f=1kHz f=2.5kHz f=6kHz f=15kHz	$V_o = -10\text{dB}$ is taken as 0dB at all flat mode at f=1kHz.	min -14 -14 -14 -14 -14 -14 -14	typ -12 -12 -12 -12 -12 -12 -12	max -10 -10 -10 -10 -10 -10 -10	unit dB dB dB dB dB dB dB
Total Harmonic Distortion	THD	f=1kHz, $V_o = 1.0\text{V}$ at all flat mode input			0.02	0.1	%
Output Noise Voltage	V_{NO}	All flat, input short, B.P.F., 10Hz to 30kHz			7	40	μV

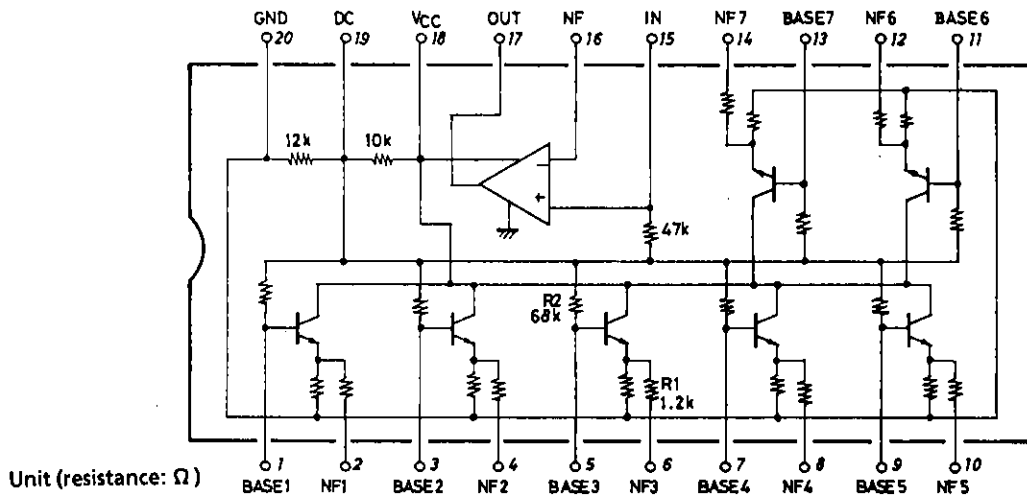
Test Method: $V_{CC} = 8\text{V}$, $R_L = 10\text{kohms}$, $R_g = 600\text{ohms}$

Item	SW1	SW2	SW3	SW4	SW5	SW6	SW7	SW8	SW9	SW10	Conditions
I _{cco}	1	F	F	F	F	F	F	F	2	1	
V _G	2	F	F	F	F	F	F	F	1	1	f=1kHz $V_{IN} = -10\text{dB}$
BOOST1	2	B	F	F	F	F	F	F	1	1	f=60Hz
BOOST2	2	F	B	F	F	F	F	F	1	1	f=150Hz
BOOST3	2	F	F	B	F	F	F	F	1	1	f=400Hz
BOOST4	2	F	F	F	B	F	F	F	1	1	f=1kHz
BOOST5	2	F	F	F	F	B	F	F	1	1	f=2.5kHz
BOOST6	2	F	F	F	F	F	B	F	1	1	f=6kHz
BOOST7	2	F	F	F	F	F	F	B	1	1	f=15kHz
CUT1	2	C	F	F	F	F	F	F	1	1	f=60Hz
CUT2	2	F	C	F	F	F	F	F	1	1	f=150Hz
CUT3	2	F	F	C	F	F	F	F	1	1	f=400Hz
CUT4	2	F	F	F	C	F	F	F	1	1	f=1kHz
CUT5	2	F	F	F	F	C	F	F	1	1	f=2.5kHz
CUT6	2	F	F	F	F	F	C	F	1	1	f=6kHz
CUT7	2	F	F	F	F	F	F	C	1	1	f=15kHz
THD	2	F	F	F	F	F	F	F	1	1	f=1kHz, $V_o = 1.0\text{V}$
V_{NO}	2	F	F	F	F	F	F	F	2	2	

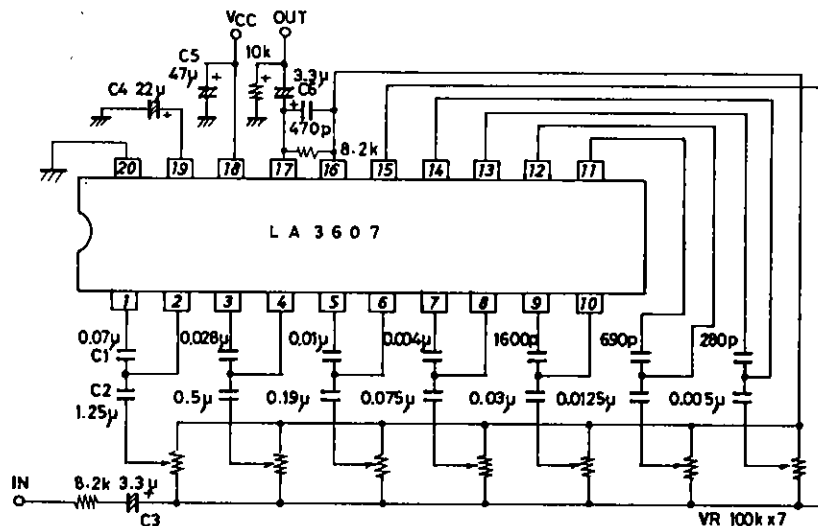
Test Circuit



Equivalent Circuit Block Diagram



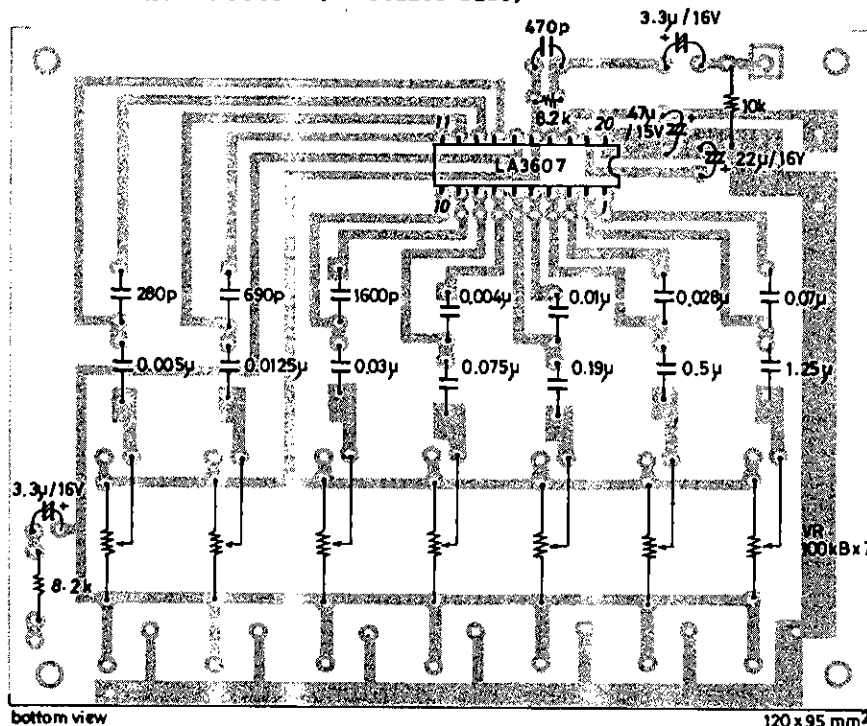
Sample Application Circuit



LA3607

Sample Printed Circuit Pattern (Cu-foiled side)

Unit (resistance: Ω , capacitance: F)



f_o (resonance frequency)

In the sample application circuit, f_o for each of 7 bands is set as follows:
 f_o =60Hz, 150Hz, 400Hz, 1kHz, 2.5kHz, 6kHz, 15kHz
 f_o is calculated using the following formula.

$$f_o = \frac{1}{2\pi \sqrt{C1 \cdot C2 \cdot R1 \cdot R2}}$$

Q (quality factor)

Q is calculated using the following formula.

$$Q = \frac{\sqrt{C1 \cdot R2}}{C2 \cdot R1}$$

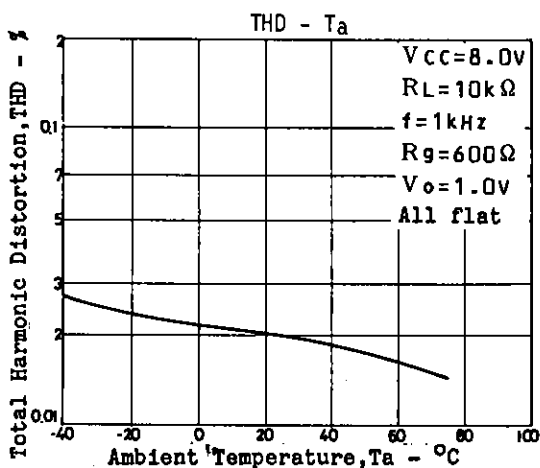
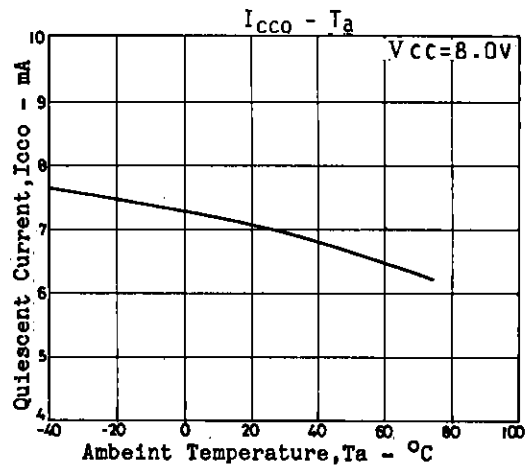
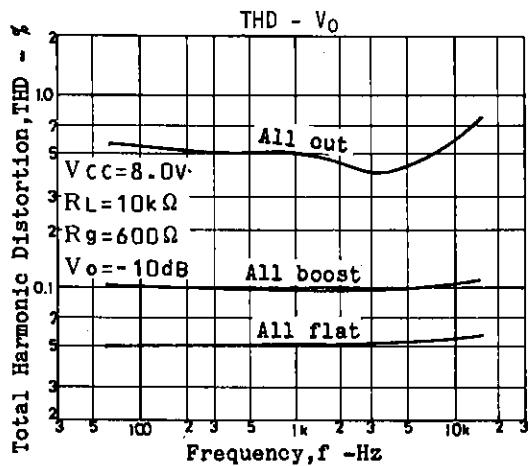
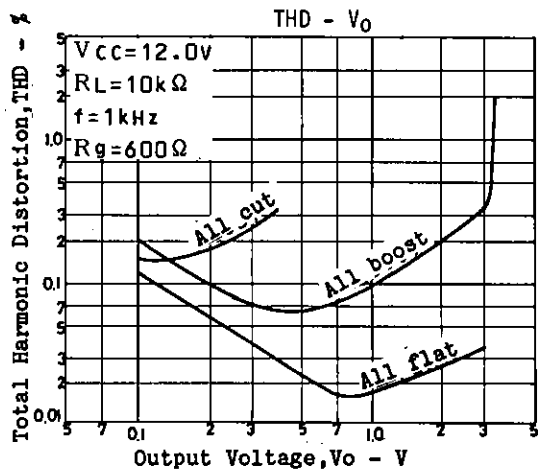
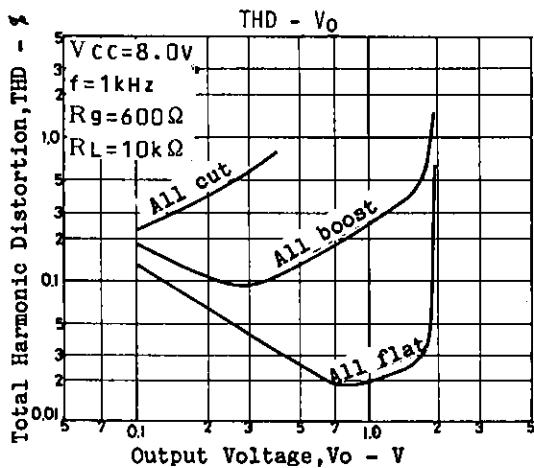
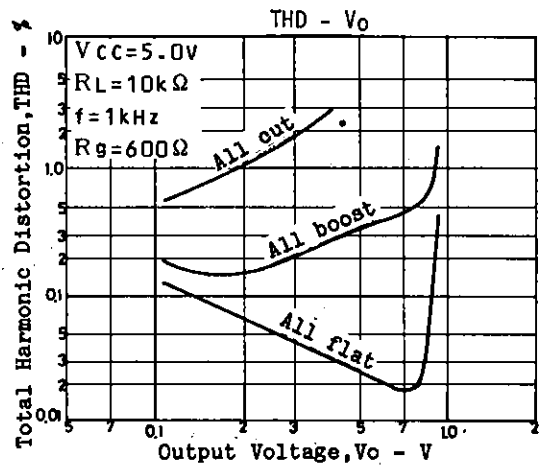
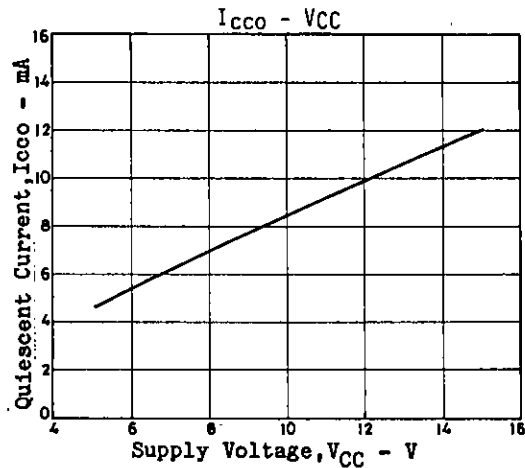
When Q is increased, the frequency band affected by the resonance circuit is narrowed and a clear distinction between this band and adjacent band is provided, but the frequency response swells greatly at all boost mode and the peak of the composite frequency is lowered. The above must be considered to fix C1, C2.

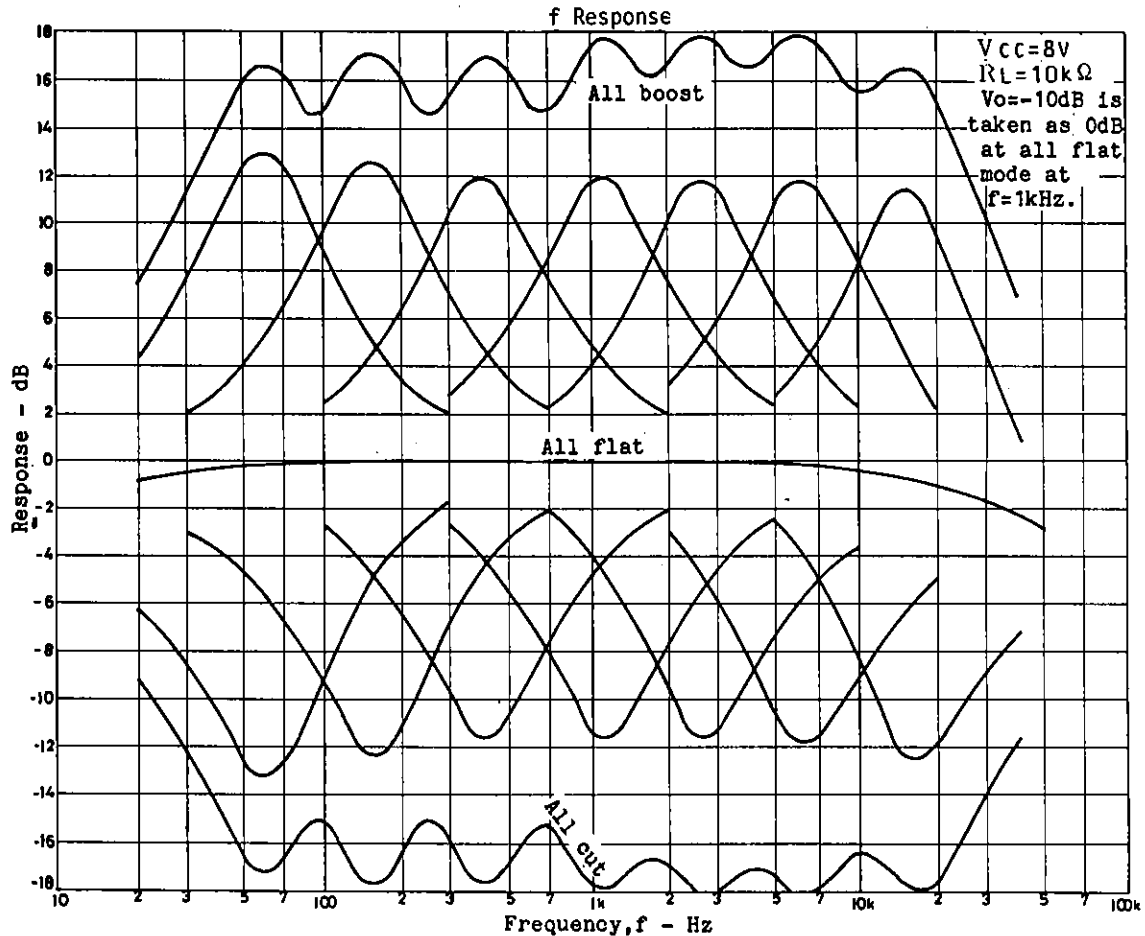
Description of external parts

- C1, C2 : Capacitors used to fix f_o (resonance frequency)
- C3 : Input capacitor. Decreasing the capacitor value lowers the frequency response at low frequencies.
- C4 : Decoupling capacitor. Decreasing the capacitor value makes the effect of power supply stronger, whereby ripple is liable to occur.
- C5 : Power capacitor
- C6 : Output capacitor. Decreasing the capacitor value lowers the frequency response at low frequencies.

Proper cares in using IC

- . Maximum supply voltage V_{CC} max 20V must not be exceeded. The operating voltage is in the range of 5 to 15V.
- . Application of power with the pin-to-pin spaces shorted causes breakdown or deterioration of the IC to occur. When mounting the IC on the board or applying power, make sure that the pin-to-pin spaces are not shorted with solder, etc.





■ No products described or contained herein are intended for use in surgical implants, life-support systems, aerospace equipment, nuclear power control systems, vehicles, disaster/crime-prevention equipment and the like, the failure of which may directly or indirectly cause injury, death or property loss.

■ Anyone purchasing any products described or contained herein for an above-mentioned use shall:

- ① Accept full responsibility and indemnify and defend SANYO ELECTRIC CO., LTD., its affiliates, subsidiaries and distributors and all their officers and employees, jointly and severally, against any and all claims and litigation and all damages, cost and expenses associated with such use;
- ② Not impose any responsibility for any fault or negligence which may be cited in any such claim or litigation on SANYO ELECTRIC CO., LTD., its affiliates, subsidiaries and distributors or any of their officers and employees jointly or severally.

■ Information (including circuit diagrams and circuit parameters) herein is for example only; it is not guaranteed for volume production. SANYO believes information herein is accurate and reliable, but no guarantees are made or implied regarding its use or any infringements of intellectual property rights or other rights of third parties.