

SANYO

No. 4786

LA5609

Multi-Function Voltage Regulator for Radio Cassette Recorders with CD Player

Overview

The LA5609 is a multi-function multi-voltage power supply that includes a built-in on/off function. The LA5609 provides dedicated outputs for motors, audio systems, CD drive, radio, microprocessor, and loading drives, thus making it optimal for use as the system power supply in radio cassette recorders with CD player.

Functions

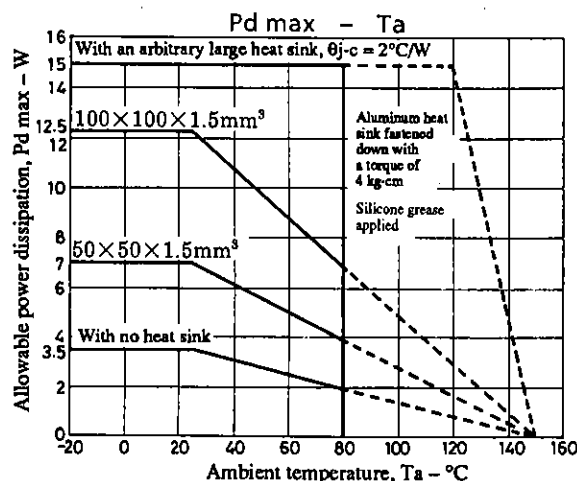
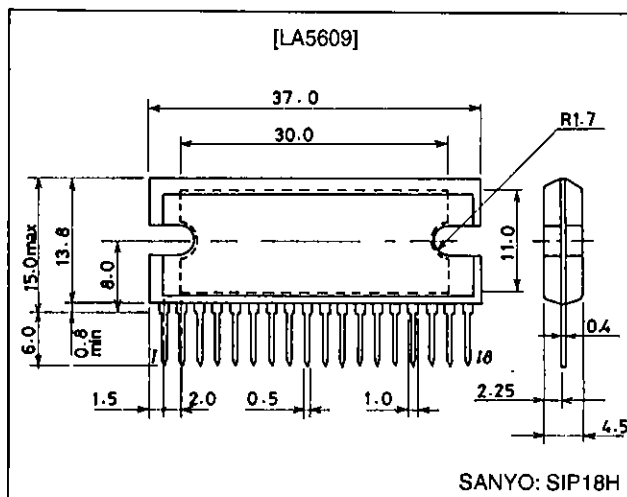
- Power supply systems for radio cassette recorders with CD player
- Miniature electronic equipment
- Low-saturation regulator (14.5 V/1.2 A, 9 V/300 mA, 7.5 V/800 mA)
- High-precision power supply (two 5 V/220 mA systems, 5 V/100 mA, 8 V/800 mA)
- Limiter power supply (9 V/60 mA)

Features

- Supports end-product miniaturization by the provision of built-in control circuits.
- Provides reduced internal power dissipation by the adoption of a low-saturation regulator.
- Built-in output current limiter prevents IC destruction due to output shorts.

Package Dimensions

unit: mm

3109-SIP18H

SANYO Electric Co., Ltd. Semiconductor Business Headquarters

TOKYO OFFICE Tokyo Bldg., 1-10, 1 Chome, Ueno, Taito-ku, TOKYO, 110 JAPAN

Specifications

Maximum Ratings at $T_a = 25^\circ\text{C}$

Parameter	Symbol	Conditions	Ratings	Unit
Input voltage	V_{CC} max		24	V
V_{REF} pin voltage	V_{REF}		6	V
POWER CONT pin voltage	V_{CONT} max		6	V
AC STBY pin voltage	V_{AC} max		6	V
MODE SW pin voltage	V_{MODE} max		6	V
Allowable power dissipation	P_d max	With no heat sink	3.5	W
Operating temperature	T_{opr}		-20 to +80	$^\circ\text{C}$
Storage temperature	T_{stg}		-55 to +150	$^\circ\text{C}$

Operating Conditions at $T_a = 25^\circ\text{C}$

Parameter	Symbol	Conditions	Ratings	Unit
Input voltage	V_{CC}		6.5 to 22	V
Input voltage	V_{REF}		4.5 to 5.5	V
Motor 14.5 V output current	$I_{O\ MOT}$		0 to 1.2	A
Audio 9 V output current	$I_{O\ AUD}$		0 to 300	mA
Digital 5 V output current	$I_{O\ DIGI}$		0 to 220	mA
CD 5 V output current	$I_{O\ CD5}$		0 to 220	mA
CD 8 V output current	$I_{O\ CD8}$		0 to 0.8	A
Radio 5 V output current	$I_{O\ RAD}$		0 to 100	mA
Loading 7.5 V output current	$I_{O\ LOAD}$		0 to 0.8	A
9 V limiter output current	$I_{O\ LIM}$		0 to 60	mA

Operating Characteristics at $T_a = 25^\circ\text{C}$ in the specified test circuit

Parameter	Symbol	Conditions	min	typ	max	Unit
[No Load Currents]						
V_{CC} quiescent current	I_{CC}	$V_{CC} = 12\text{ V}$, Power cont.: L, 5 V_{REF} : L			500	μA
Influx 1 V_{REF} 5 V input current	I_{REF1}	$V_{CC} = 0\text{ V}$, Power cont.: L			10	μA
Influx 2 V_{REF} 5 V input current	I_{REF2}	$V_{CC} = 12\text{ V}$, Power cont. = 5 V			700	μA
[Motor 14.5 V Regulator Block] $V_{CC} = 16\text{ V}$, $I_{O\ MOT} = 1.2\text{ A}$, Power cont. = 5 V						
Output voltage	$V_{O\ MOT}$		14.0	14.5	15.0	V
Dropout voltage	$V_{DROP-MOT}$	$V_{CC} = 14\text{ V}$, $I_{O\ MOT} = 600\text{ mA}$		0.4	0.8	V
Line regulation	$\Delta V_{OLN-MOT}$	$V_{CC} = 16\text{ to }22\text{ V}$		30	300	mV
Load regulation	$\Delta V_{OLD-MOT}$	$I_{O\ MOT} = 0\text{ to }1.2\text{ A}$		200	800	mV
Peak output current	I_{OP-MOT}		1.2			A
Short circuit output current	$I_{OSC-MOT}$			300		mA
[Audio 9 V Regulator Block] $V_{CC} = 11\text{ V}$, $I_{O\ AUD} = 300\text{ mA}$, Power cont. = 5 V						
Output voltage	$V_{O\ AUD}$		8.5	9.0	9.5	V
Dropout voltage	$V_{DROP-AUD}$	$V_{CC} = 8.5\text{ V}$, $I_{O\ AUD} = 150\text{ mA}$		0.2	0.8	V
Line regulation	$\Delta V_{OLN-AUD}$	$V_{CC} = 11\text{ to }22\text{ V}$		100	400	mV
Load regulation	$\Delta V_{OLD-AUD}$	$I_{O\ AUD} = 0\text{ to }300\text{ mA}$		100	400	mV
Peak output current	I_{OP-AUD}		300			mA
Short circuit output current	$I_{OSC-AUD}$			50		mA
Ripple rejection	$R_{REJ-AUD}$	$f = 120\text{ Hz}$, $10\text{ V} \leq V_{CC} \leq 15\text{ V}$, $C = 1\text{ }\mu\text{F}$		60		dB

Continued on next page.

Continued from preceding page.

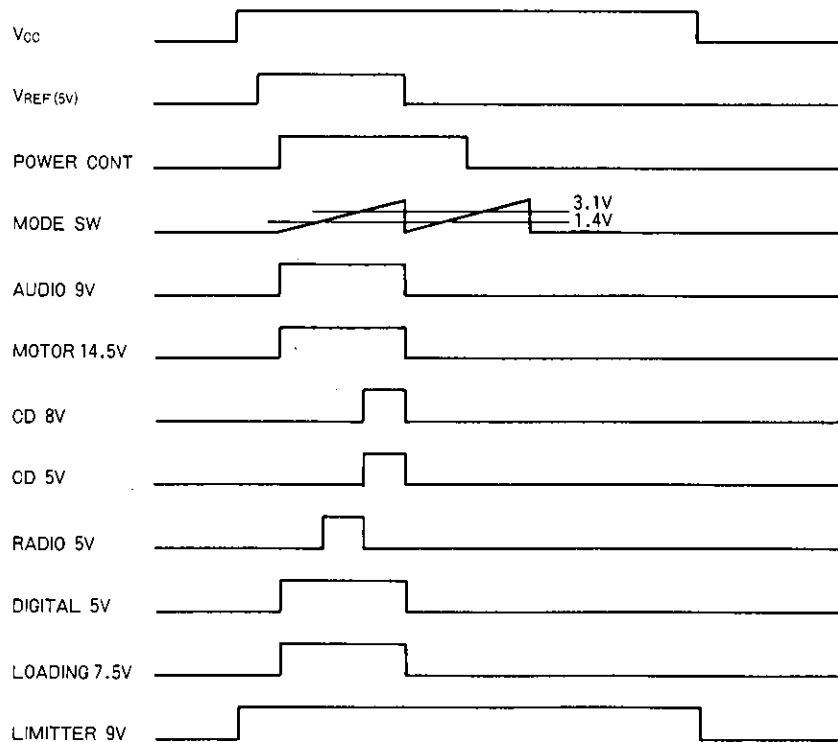
Parameter	Symbol	Conditions	min	typ	max	Unit
[Digital 5.0 V Regulator Block] Power cont. = 5 V						
Output voltage	$V_{O\text{-DIGI}}$	$V_{CC} = 16\text{ V}, I_{O\text{-DIGI}} = 100\text{ mA}$	4.95	5.05	5.15	V
Dropout voltage	$V_{\text{DROP-DIGI}}$	$V_{CC} = 4.9\text{ V}, I_{O\text{-DIGI}} = 110\text{ mA}$		0.6	1.4	V
Line regulation	$\Delta V_{\text{OLN1-DIGI}}$	$V_{CC} = 16\text{ to }20\text{ V}, I_{O\text{-DIGI}} = 220\text{ mA}$	0	40	60	mV
	$\Delta V_{\text{OLN2-DIGI}}$	$V_{CC} = 16\text{ to }8\text{ V}, I_{O\text{-DIGI}} = 220\text{ mA}$	-100	-70	0	mV
	$\Delta V_{\text{OLN3-DIGI}}$	$V_{CC} = 16\text{ to }20\text{ V}, I_{O\text{-DIGI}} = 0\text{ mA}$	-20	0	+20	mV
	$\Delta V_{\text{OLN4-DIGI}}$	$V_{CC} = 16\text{ to }8\text{ V}, I_{O\text{-DIGI}} = 0\text{ mA}$	-20	0	+20	mV
Load regulation	$\Delta V_{\text{OLD1-DIGI}}$	$V_{CC} = 16\text{ V}, I_{O\text{-DIGI}} = 100\text{ to }220\text{ mA}$	0	40	60	mV
	$\Delta V_{\text{OLD2-DIGI}}$	$V_{CC} = 16\text{ V}, I_{O\text{-DIGI}} = 100\text{ to }0\text{ mA}$	-60	-40	0	mV
Peak output current	$I_{\text{OP-DIGI}}$	$V_{CC} = 6.5\text{ V}$	220	260		mA
Short circuit output current	$I_{\text{OSC-DIGI}}$	$V_{CC} = 6.5\text{ V}$		260		mA
[CD 5.0 V Regulator Block] Power cont. = 5 V, Mode SW = 5 V						
Output voltage	$V_{O\text{-CD5}}$	$V_{CC} = 16\text{ V}, I_{O\text{-CD5}} = 100\text{ mA}$	4.9	5.0	5.1	V
Dropout voltage	$V_{\text{DROP-CD5}}$	$V_{CC} = 4.9\text{ V}, I_{O\text{-CD5}} = 110\text{ mA}$		0.6	1.4	V
Line regulation	$\Delta V_{\text{OLN1-CD5}}$	$V_{CC} = 16\text{ to }20\text{ V}, I_{O\text{-CD5}} = 220\text{ mA}$	0	40	60	mV
	$\Delta V_{\text{OLN2-CD5}}$	$V_{CC} = 16\text{ to }8\text{ V}, I_{O\text{-CD5}} = 220\text{ mA}$	-100	-70	0	mV
	$\Delta V_{\text{OLN3-CD5}}$	$V_{CC} = 16\text{ to }20\text{ V}, I_{O\text{-CD5}} = 0\text{ mA}$	-20	0	+20	mV
	$\Delta V_{\text{OLN4-CD5}}$	$V_{CC} = 16\text{ to }8\text{ V}, I_{O\text{-CD5}} = 0\text{ mA}$	-20	0	+20	mV
Load regulation	$\Delta V_{\text{OLD1-CD5}}$	$V_{CC} = 16\text{ V}, I_{O\text{-CD5}} = 100\text{ to }220\text{ mA}$	0	40	60	mV
	$\Delta V_{\text{OLD2-CD5}}$	$V_{CC} = 16\text{ V}, I_{O\text{-CD5}} = 100\text{ to }0\text{ mA}$	-60	-40	0	mV
Peak output current	$I_{\text{OP-CD5}}$	$V_{CC} = 6.5\text{ V}$	220	260		mA
Short circuit output current	$I_{\text{OSC-CD5}}$	$V_{CC} = 6.5\text{ V}$		260		mA
[CD 8.0 V Regulator Block] $V_{CC} = 9.5\text{ V}, I_{O\text{-CD8}} = 800\text{ mA}$, Power cont. = 5 V, Mode SW = 5 V						
Output voltage	$V_{O\text{-CD8}}$		7.5	8.0	8.5	V
Dropout voltage	$V_{\text{DROP-CD8}}$	$V_{CC} = 7.5\text{ V}, I_{O\text{-CD8}} = 400\text{ mA}$		0.6	1.4	V
Line regulation	$\Delta V_{\text{OLN-CD8}}$	$V_{CC} = 9.5\text{ to }22\text{ V}$		20	200	mV
Load regulation	$\Delta V_{\text{OLD-CD8}}$	$I_{O\text{-CD8}} = 0\text{ to }800\text{ mA}$		100	250	mV
Peak output current	$I_{\text{OP-CD8}}$		0.8	1.1		A
[Radio 5.0 V Regulator Block] Power cont. = 5 V						
Output voltage	$V_{O\text{-RAD}}$	$V_{CC} = 16\text{ V}, I_{O\text{-RAD}} = 50\text{ mA}$	4.9	5.0	5.1	V
Dropout voltage	$V_{\text{DROP-RAD}}$	$V_{CC} = 4.9\text{ V}, I_{O\text{-RAD}} = 50\text{ mA}$		0.6	1.4	V
Line regulation	$\Delta V_{\text{OLN1-RAD}}$	$V_{CC} = 16\text{ to }20\text{ V}, I_{O\text{-RAD}} = 100\text{ mA}$	0	20	40	mV
	$\Delta V_{\text{OLN2-RAD}}$	$V_{CC} = 16\text{ to }8\text{ V}, I_{O\text{-RAD}} = 100\text{ mA}$	-70	-40	0	mV
	$\Delta V_{\text{OLN3-RAD}}$	$V_{CC} = 16\text{ to }20\text{ V}, I_{O\text{-RAD}} = 0\text{ mA}$	-10	0	+10	mV
	$\Delta V_{\text{OLN4-RAD}}$	$V_{CC} = 16\text{ to }8\text{ V}, I_{O\text{-RAD}} = 0\text{ mA}$	-10	0	+10	mV
Load regulation	$\Delta V_{\text{OLD1-RAD}}$	$V_{CC} = 16\text{ V}, I_{O\text{-RAD}} = 50\text{ to }100\text{ mA}$	0	20	40	mV
	$\Delta V_{\text{OLD2-RAD}}$	$V_{CC} = 16\text{ V}, I_{O\text{-RAD}} = 50\text{ to }0\text{ mA}$	-40	-20	0	mV
Peak output current	$I_{\text{OP-RAD}}$	$V_{CC} = 6.5\text{ V}$	100	160		mA
Short circuit output current	$I_{\text{OSC-RAD}}$	$V_{CC} = 6.5\text{ V}$		160		mA
[Loading 7.5 V Regulator Block] Power cont. = 5 V						
REG SET voltage	V_{REGS}	$V_{CC} = 16\text{ V}, I_{O\text{-LOAD}} = 400\text{ mA}$	1.27	1.31	1.35	V
Dropout voltage	$V_{\text{DROP-LOAD}}$	$V_{CC} = 7.3\text{ V}, I_{O\text{-LOAD}} = 400\text{ mA}$		0.4	0.8	V
Line regulation	$\Delta V_{\text{OLN1-LOAD}}$	$V_{CC} = 16\text{ to }20\text{ V}, I_{O\text{-LOAD}} = 800\text{ mA}$	0	10	20	mV
	$\Delta V_{\text{OLN2-LOAD}}$	$V_{CC} = 16\text{ to }9\text{ V}, I_{O\text{-LOAD}} = 800\text{ mA}$	-20	-10	0	mV
	$\Delta V_{\text{OLN3-LOAD}}$	$V_{CC} = 16\text{ to }20\text{ V}, I_{O\text{-LOAD}} = 0\text{ mA}$	-10	0	+10	mV
	$\Delta V_{\text{OLN4-LOAD}}$	$V_{CC} = 16\text{ to }9\text{ V}, I_{O\text{-LOAD}} = 0\text{ mA}$	-10	0	+10	mV
Load regulation	$\Delta V_{\text{OLD1-LOAD}}$	$V_{CC} = 16\text{ V}, I_{O\text{-LOAD}} = 400\text{ to }800\text{ mA}$	0	10	20	mV
	$\Delta V_{\text{OLD2-LOAD}}$	$V_{CC} = 16\text{ V}, I_{O\text{-LOAD}} = 400\text{ to }0\text{ mA}$	-20	-10	0	mV
Peak output current	$I_{\text{OP-LOAD}}$	$V_{CC} = 9\text{ V}$	0.8			A
Short circuit output current	$I_{\text{OSC-LOAD}}$	$V_{CC} = 9\text{ V}$		200		mA

Continued on next page.

Continued from preceding page.

Parameter	Symbol	Conditions	min	typ	max	Unit
[9.0 V Limiter Block] $V_{CC} = 11\text{ V}$, $I_{O\text{ LIM}} = 60\text{ mA}$						
Output voltage	$V_{O\text{ LIM}}$		8.0	9.0	9.5	V
Dropout voltage	$V_{\text{DROP-LIM}}$	$V_{CC} = 8\text{ V}$		1.0		V
Peak output current	$I_{\text{OP-LIM}}$		60	150		mA
Short circuit output current	$I_{\text{OSC-LIM}}$			200		mA
[Mode Switch] $V_{CC} = 12\text{ V}$						
Voltage with radio mode on	$V_{\text{MTH H}}$	Voltage when the radio output is switched high	1.1	1.4	1.7	V
Voltage with radio mode off	$V_{\text{MTH L}}$	Voltage when the radio output is switched low	2.9	3.1	3.3	V
Voltage with CD mode on	$V_{\text{ATH H}}$	Voltage when the CD 5 V and CD 8 V are switched high	2.9	3.1	3.3	V
Input impedance	Z_i		16.8	24	31.2	k Ω
[Power Control] $V_{CC} = 12\text{ V}$						
Output on control voltage	$V_{\text{I CONT-ON}}$		3.0			V
Output off control voltage	$V_{\text{I CONT-OFF}}$				2.0	V
[AC standby]						
Output on control voltage	$V_{\text{I AC-ON}}$		2.0			V
Output off control voltage	$V_{\text{I AC-OFF}}$				1.0	V
[5 V System Regulator Block] $V_{CC} = 16\text{ V}$, $I_{O\text{ DIGI}} = I_{O\text{ CD5}} = 100\text{ mA}$, $I_{O\text{ RAD}} = 50\text{ mA}$						
Difference between output voltages	ΔV_{DEF}			0	0.15	V

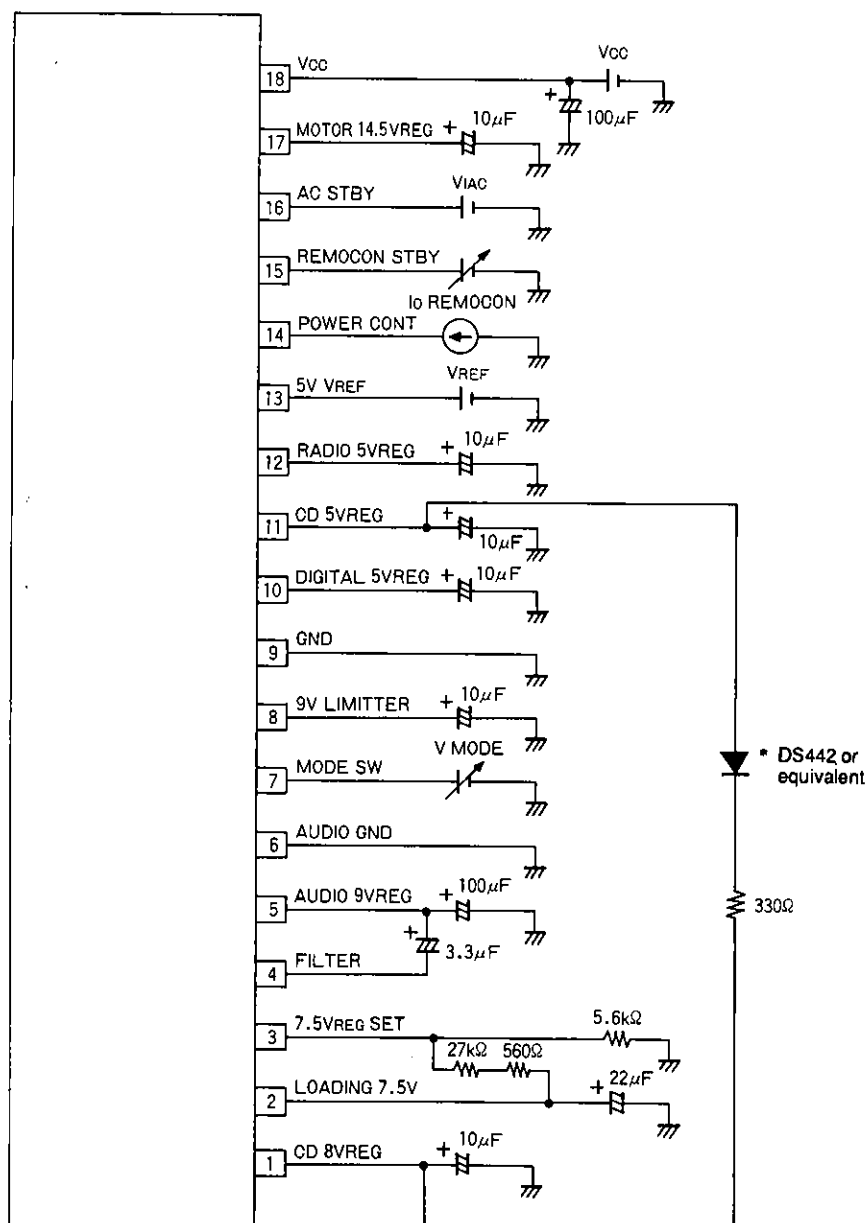
Timing Chart



Function Table

V _{REF}	Power cont.	Mode SW	V _{OUT}						
			Audio 9 V	Motor 14.5 V	Digital 5 V	Loading 7.5 V	CD 8 V/ CD 5 V	Radio 5 V	Limiter 9 V
L	L	L (0 V)			L		L	L	H
		M (2.5 V)			L		L	L	H
		H (5 V)			L		L	L	H
	H	L (0 V)			L		L	L	H
		M (2.5 V)			L		L	L	H
		H (5 V)			L		L	L	H
H	L	L (0 V)			L		L	L	H
		M (2.5 V)			L		L	L	H
		H (5 V)			L		L	L	H
	H	L (0 V)			H		L	L	H
		M (2.5 V)			H		L	H	H
		H (5 V)			H		H	L	H

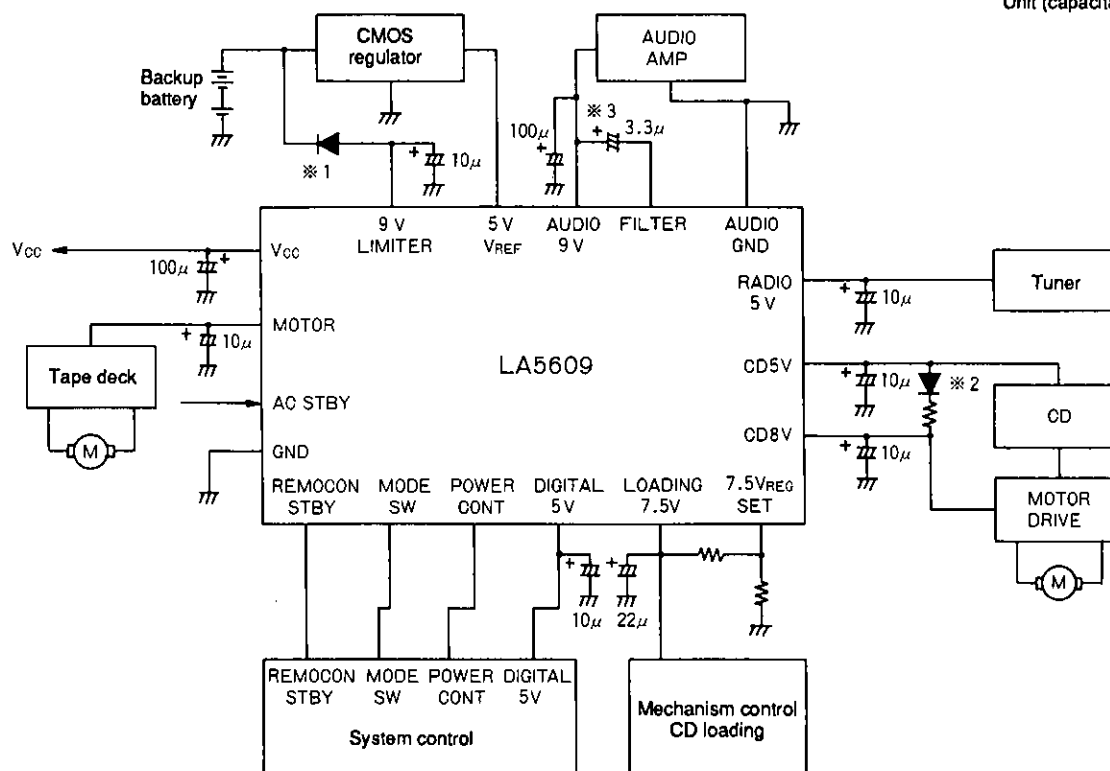
Test Circuit



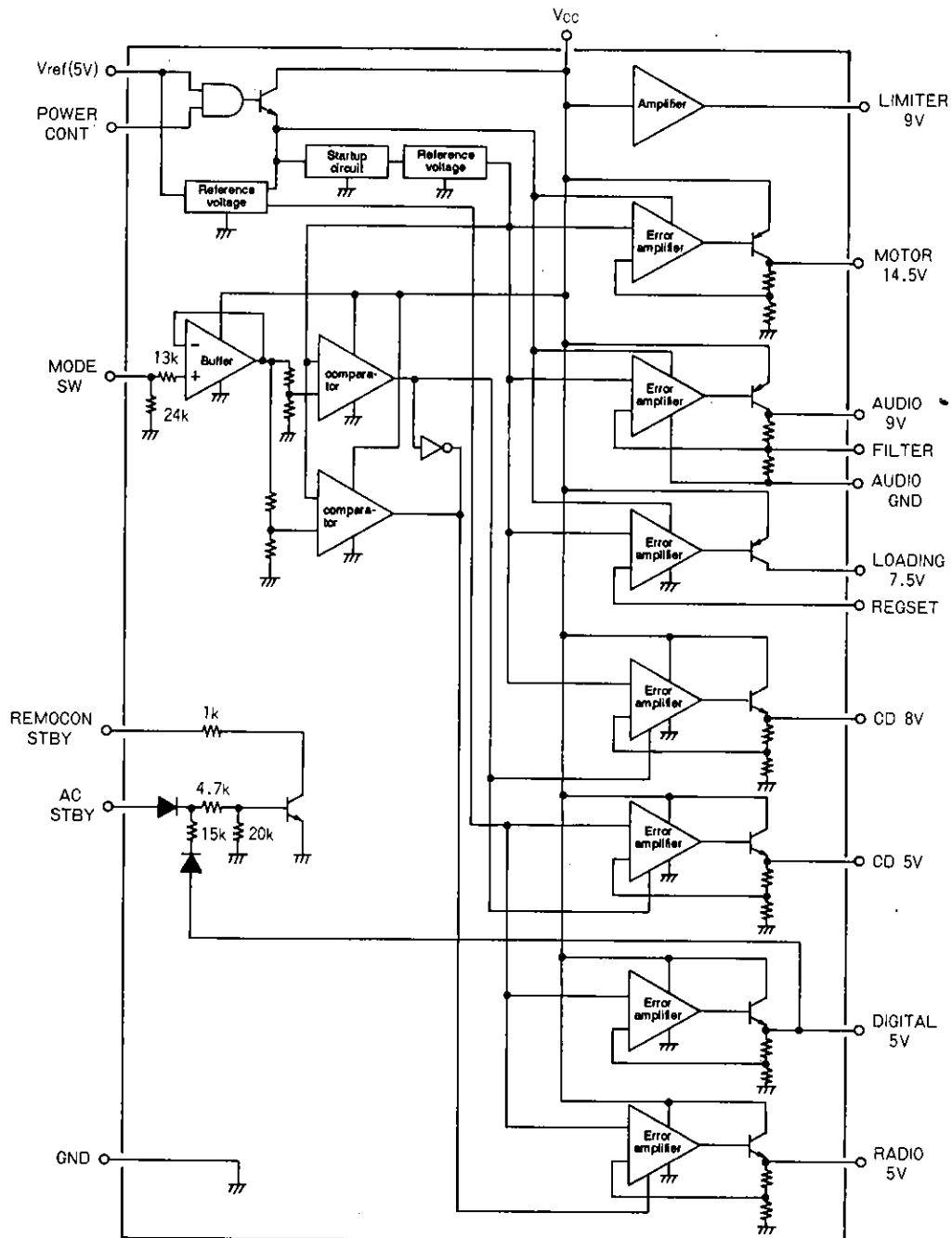
Note: * This diode is required for bringing up the CD 8 V regulator.

Sample Application Circuit

Unit (capacitance: F)



Equivalent Circuit Block Diagram

Unit (resistance: Ω)

- No products described or contained herein are intended for use in surgical implants, life-support systems, aerospace equipment, nuclear power control systems, vehicles, disaster/crime-prevention equipment and the like, the failure of which may directly or indirectly cause injury, death or property loss.
- Anyone purchasing any products described or contained herein for an above-mentioned use shall:
 - ① Accept full responsibility and indemnify and defend SANYO ELECTRIC CO., LTD., its affiliates, subsidiaries and distributors and all their officers and employees, jointly and severally, against any and all claims and litigation and all damages, cost and expenses associated with such use;
 - ② Not impose any responsibility for any fault or negligence which may be cited in any such claim or litigation on SANYO ELECTRIC CO., LTD., its affiliates, subsidiaries and distributors or any of their officers and employees jointly or severally.
- Information (including circuit diagrams and circuit parameters) herein is for example only; it is not guaranteed for volume production. SANYO believes information herein is accurate and reliable, but no guarantees are made or implied regarding its use or any infringements of intellectual property rights or other rights of third parties.