

SANYO

No.3263

LB1105M**6-Channel × 4-Unit Diode Array**

The LB1105M is a diode array IC that integrates 4 units of 6-channel diode array with anode-common configuration. It is especially suited for keyboard-use diode matrix, OR gate applications. Replacement of individual diodes with the LB1105M implements higher mounting density.

Applications

- Keyboard-use diode matrixes, OR gates

Functions

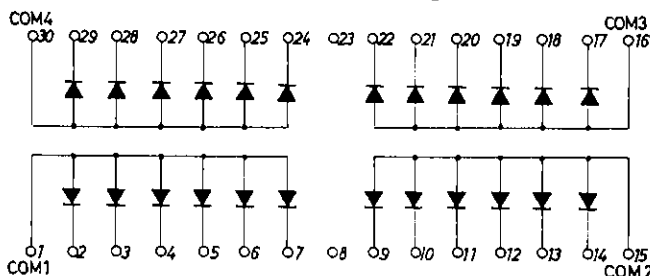
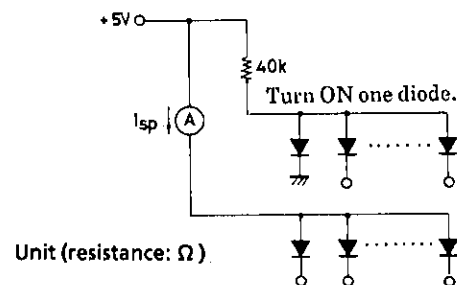
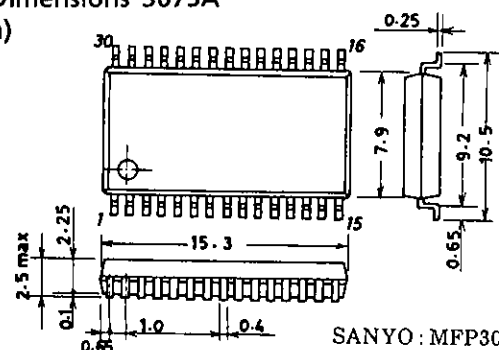
- Anode-common 6-diode array (4-unit organization)

Absolute Maximum Ratings at $T_a = 25^\circ\text{C}$

			unit
Reverse Voltage	V_R	15	V
Average Forward Current	I_F	Each diode	5 mA
Surge Forward Current	I_{FS}	1 s or less	50 mA
Allowable Power Dissipation	$P_d \text{ max}$	800	mW
Operating Temperature	T_{opr}	-20 to +75	$^\circ\text{C}$
Storage Temperature	T_{stg}	-40 to +125	$^\circ\text{C}$

Electrical Characteristics at $T_a = 25^\circ\text{C}$

			min	typ	max	unit
Forward Voltage	V_F	$I_F = 0.7 \text{ mA}$ (each diode)			0.9	V
Reverse Current	I_R	$V_R = -15 \text{ V}$ (each diode)	0.5			μA
Channel Separation 1	I_{sp1}	See specified Test Circuit (between units).			3.0	μA
Channel Separation 2	I_{sp2}				3.0	μA
Channel Separation 3	I_{sp3}				3.0	μA
Channel Separation 4	I_{sp4}				3.0	μA

Equivalent Circuit and Pin Assignment**Channel Separation Test Circuit**Unit (resistance: Ω)**Package Dimensions 3073A**
(unit: mm)

SANYO: MFP30SD

SANYO Electric Co., Ltd. Semiconductor Business Headquarters
TOKYO OFFICE Tokyo Bldg., 1-10, 1 Chome, Ueno, Taito-ku, TOKYO, 110 JAPAN

1260TA, TS No.3263-1/2

- No products described or contained herein are intended for use in surgical implants, life-support systems, aerospace equipment, nuclear power control systems, vehicles, disaster/crime-prevention equipment and the like, the failure of which may directly or indirectly cause injury, death or property loss.
- Anyone purchasing any products described or contained herein for an above-mentioned use shall:
 - ① Accept full responsibility and indemnify and defend SANYO ELECTRIC CO., LTD., its affiliates, subsidiaries and distributors and all their officers and employees, jointly and severally, against any and all claims and litigation and all damages, cost and expenses associated with such use:
 - ② Not impose any responsibility for any fault or negligence which may be cited in any such claim or litigation on SANYO ELECTRIC CO., LTD., its affiliates, subsidiaries and distributors or any of their officers and employees jointly or severally.
- Information (including circuit diagrams and circuit parameters) herein is for example only; it is not guaranteed for volume production. SANYO believes information herein is accurate and reliable, but no guarantees are made or implied regarding its use or any infringements of intellectual property rights or other rights of third parties.