

### TENTATIVE

Case Outline : 15 pins (See attached case outline drawing.)

Function : Focus output power amp

Use : Video projectors

#### Absolute Maximum Ratings at $T_a = 25^\circ\text{C}$

			unit
Supply Voltage	$V_{CC}$	$\pm 22$	V
Collector Current	$I_c$	1	A
Thermal Resistance	$\theta_{j-c}$ Per power Tr	15	$^\circ\text{C/W}$
Operating Case Temperature	$T_c$	105	$^\circ\text{C}$
Junction Temperature	$T_j$	150	$^\circ\text{C}$
Storage Temperature	$T_{stg}$	-30 to +105	$^\circ\text{C}$

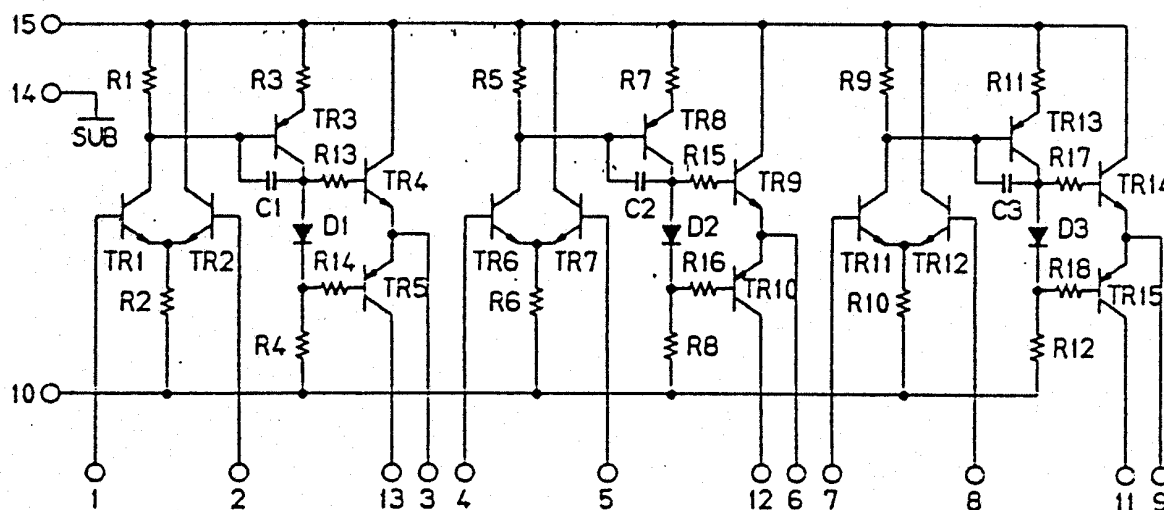
#### Operating Characteristics at $T_a = 25^\circ\text{C}, R_L = 47\Omega$

			min	typ	max	unit
Output Noise Voltage	$V_{NO}$	$V_{CC} = \pm 20\text{V}$ , circuit (1)			1	mVrms
Midpoint Voltage	$V_N$	$V_{CC} = \pm 20\text{V}$ , circuit (2)	-50		+50	mV
Quiescent Current	$I_{cco}$	$V_{CC} = \pm 20\text{V}$ , circuit (2)			40	mA
Output Current (1)	$I_o(1)$	$V_{CC} = \pm 20\text{V}$ , Vol.1 max, circuit (1)	+180	+200		mA
Output Current (2)	$I_o(2)$	$V_{CC} = \pm 20\text{V}$ , Vol.1 min, circuit (1)	-160	-180		mA

#### Remarks

- For power supply at the time of test, use a constant-voltage power supply unless otherwise specified.

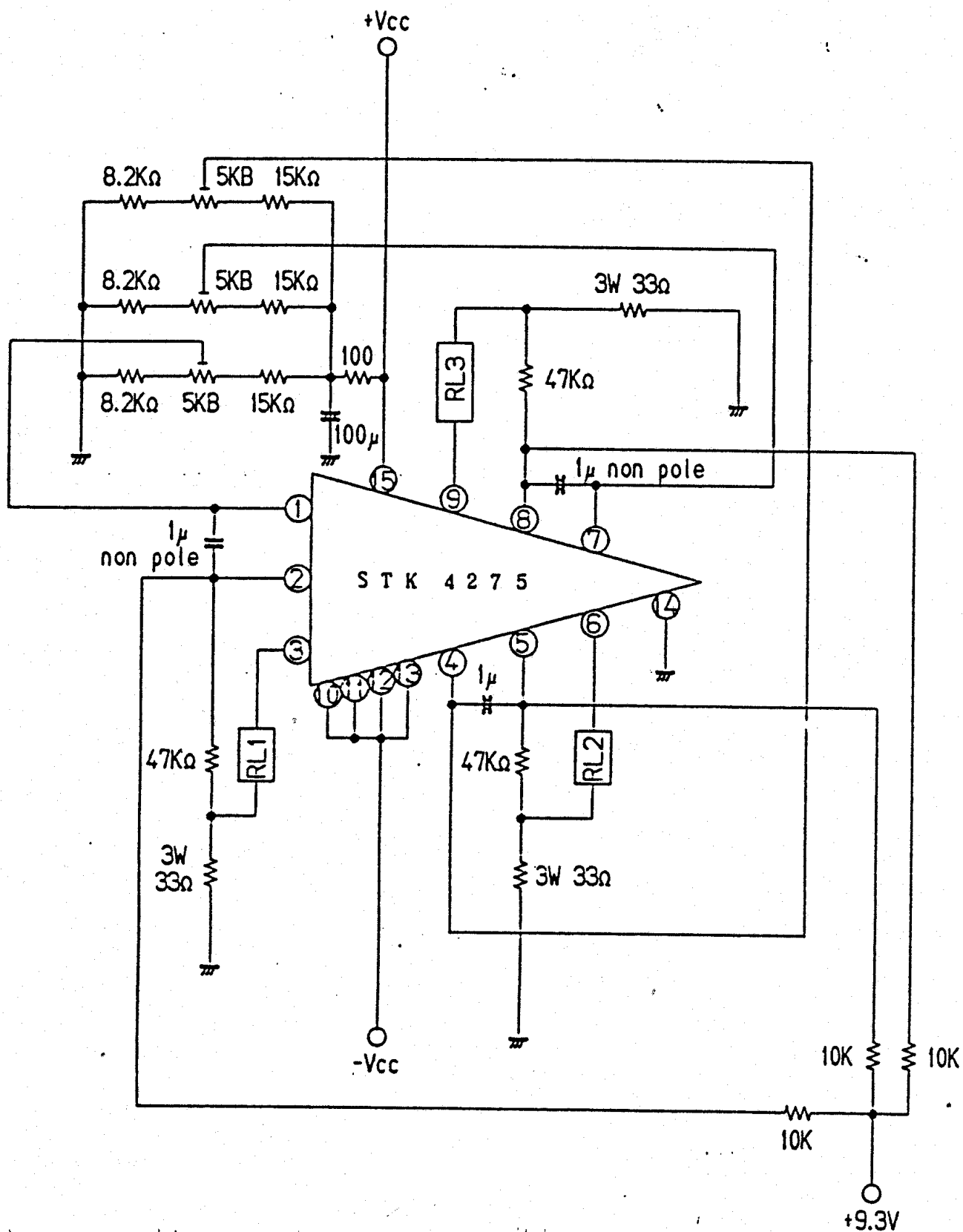
#### Internal Equivalent Circuit (STK4275)



Specifications and information herein are subject to change without notice.

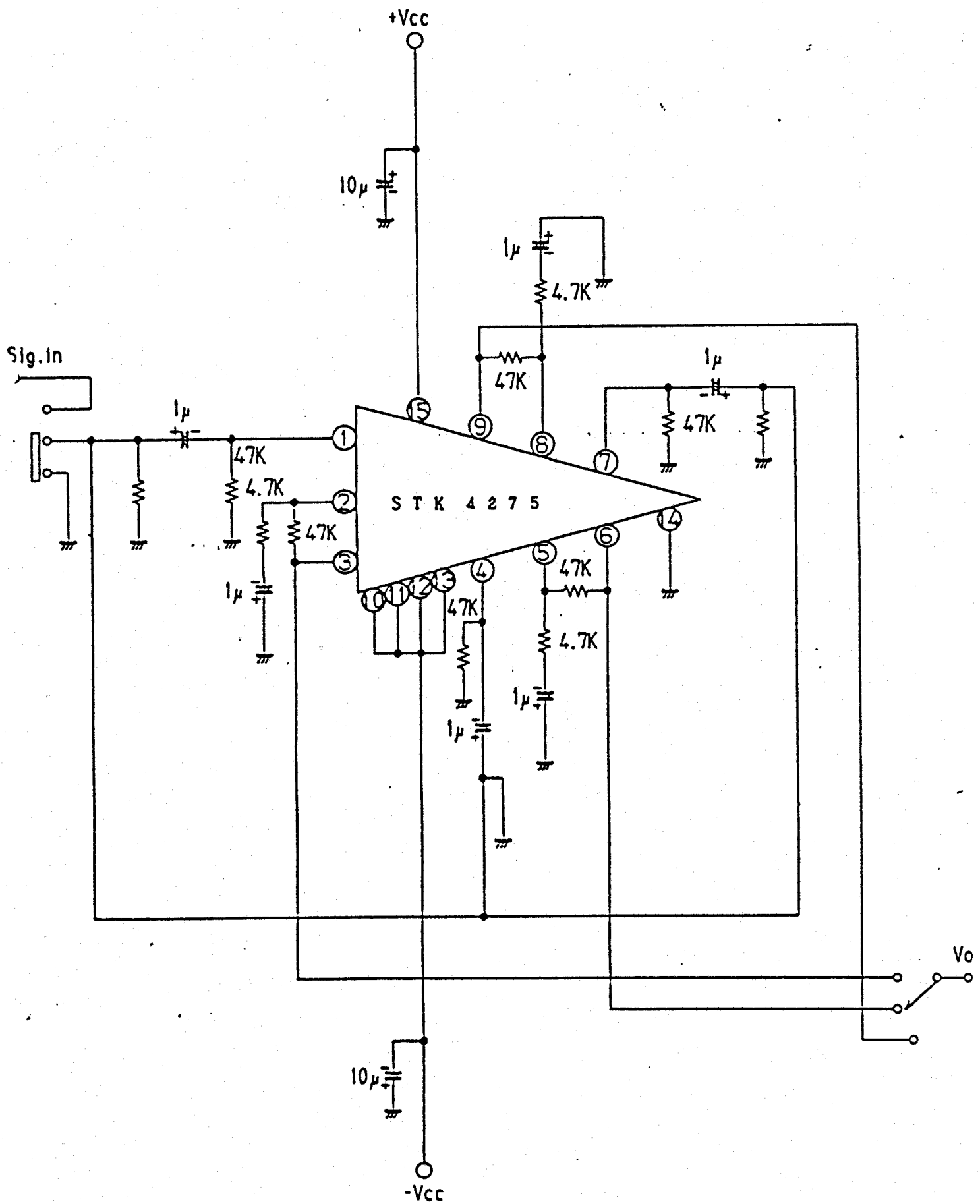
**SANYO Electric Co., Ltd. Semiconductor Overseas Marketing Div.**  
 Natsume Bldg., 18-6, 2-chome, Yushima, Bunkyo-ku, TOKYO 113 JAPAN

## Test Circuit (1) (STK4275)



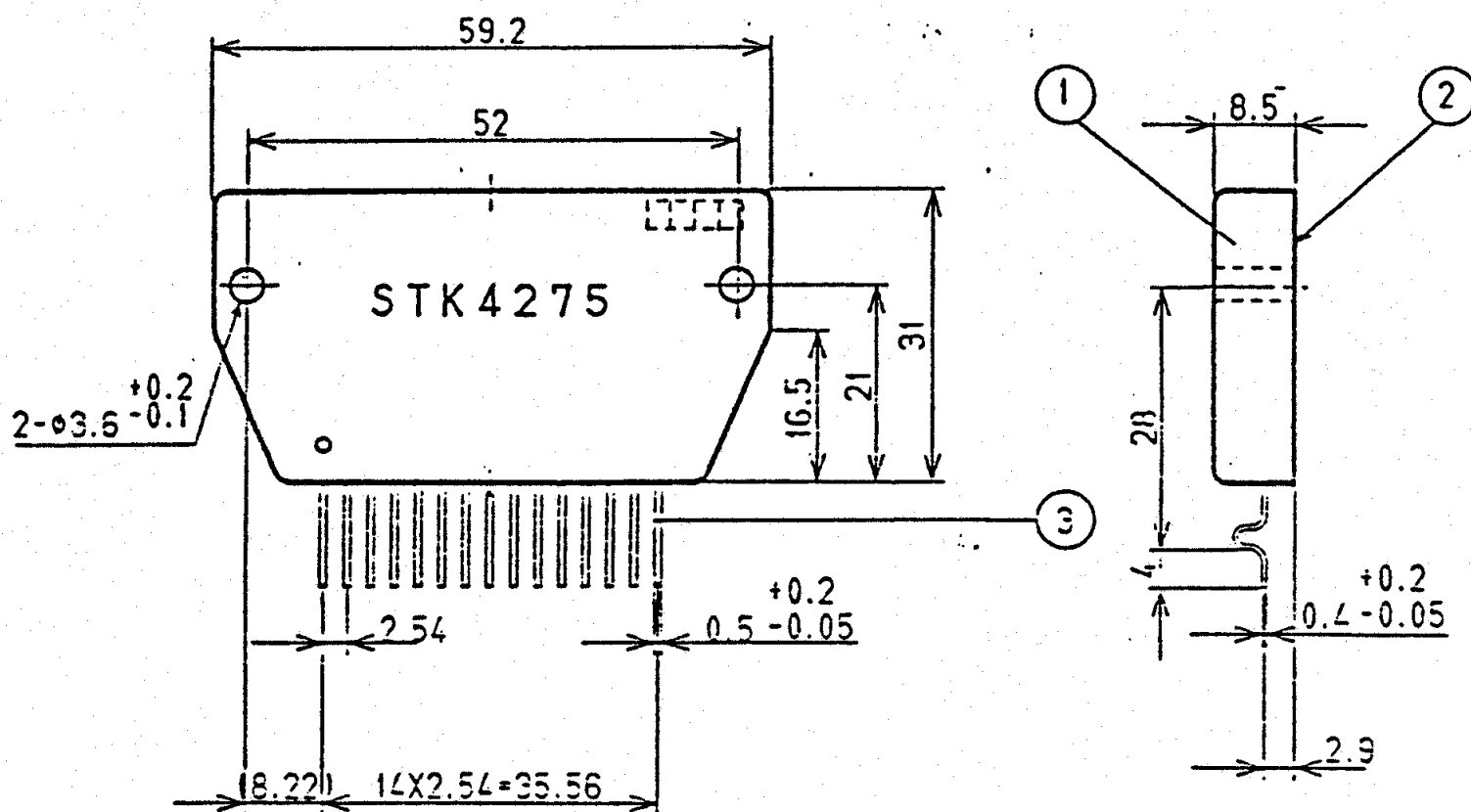
RL1~3 : 47Ω

Test Circuit (2) (STK4275)



STK4275

### Case Outline (unit : mm)



The application circuit diagrams and circuit constants herein are included as an example and provide no guarantee for designing equipment to be mass-produced.

The information herein is believed to be accurate and reliable. However, no responsibility is assumed by SANYO for its use; nor for any infringements of patents or other rights of third parties which may result from its use.