

**Maximum Ratings**

Symbol	Conditions	Values	Units
$V_{CEV_{SUS}}$	$I_C = 1\text{ A}$ , $V_{BE} = -2\text{ V}$	1200	V
$V_{CEV}$	$V_{BE} = -2\text{ V}$	1200	V
$V_{CBO}$	$I_E = 0$	1200	V
$V_{EBO}$	$I_C = 0$	7	V
$I_C$	D. C.	100	A
$I_{CM}$	$t_p = 1\text{ ms}$	200	A
$I_F = -I_C$	D. C.	100	A
$I_B$		5	A
$P_{tot}$	$T_{case} = 25\text{ °C}$	800	W
$T_{vj}$		-40 ... +150	°C
$T_{stg}$		-40 ... +125	°C
$V_{isol}$	a. c. 50 Hz, r.m.s.	2500~	V

**Thermal Characteristics**

$R_{thjc}$	darlington	0,155	°C/W
$R_{thjc}$	diode	0,65	°C/W
$R_{thch}$	module	0,075	°C/W

**Electrical Characteristics<sup>1)</sup>**

		min.	typ.	max.	
$I_{CEV}$	$V_{CE} = V_{CEV}$ , $V_{BE} = -2\text{ V}$			2	mA
$I_{EBO}$	$I_C = 0$ , $V_{BE} = -7\text{ V}$			400	mA
$V_{CEsat}^{2)}$	$I_C = 100\text{ A}$ , $I_B = 2\text{ A}$			2,5	V
$V_{BEsat}^{2)}$	$I_C = 100\text{ A}$ , $I_B = 2\text{ A}$			3,5	V
$h_{21E}^{2)}$	$I_C = 100\text{ A}$ ; $V_{CE} = 5\text{ V}$	75			

**Switching Characteristics for Resistive Load<sup>1)</sup>**

$t_{on}$	$I_C = 100\text{ A}$ $I_{B1} = -I_{B2} = 2\text{ A}$ $V_{CC} = 600\text{ V}$		3	μs
$t_s$			15	μs
$t_f$			3	μs

**Inverse Diode Characteristics<sup>1)</sup>**

$V_F = -V_{CE}$	$I_F = -I_C = 100\text{ A}$		1,8	V
$I_{FSM} = -I_{Cp}$	$\sin 180^\circ$ , 10 ms	1000		A
$I_{RM}$	$I_F = -I_C = 100\text{ A}$ , $-di_F/dt = 100\text{ A}/\mu\text{s}$ $V_{BE} = -3\text{ V}$ , $V_R = V_{CE} = 400\text{ V}$ , $T_{vj} = 125\text{ °C}$		38	A
$Q_{rr}$			19	μC

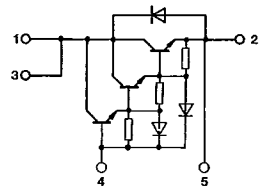
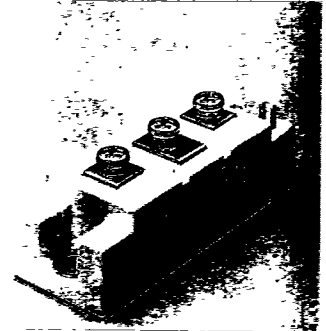
**Mechanical Data**

$M_1$	Case to heatsink	SI units	3	6	Nm
		US units	27	53	lb. in.
$M_2$	Busbars to terminals	SI units	2,5	5	Nm
		US units	22	44	lb. in.
$w$			250		g
Case			D 16		

**SEMITRANS® 2 NPN**  
**Power Darlington Modules**  
**100 A, 1200 V**

**SK 100 DA 120 D**

T-33-35



**Features**

- Isolated baseplate (ease of mounting of one or several modules on one heatsink)
- All electrical connections on top (ease of interconnecting of modules with busbars/PCB)
- Large clearances and creepage distances
- Parallel connected fast recovery inverse diode
- UL recognized, file no. E 63 532

**Typical Applications**

- Switched mode power supplies
- DC servo and robot drives
- AC motor controls
- Brake choppers

<sup>1)</sup>  $T_{case} = 25\text{ °C}$  unless otherwise stated

<sup>2)</sup>  $t_p \leq 300\text{ μs}$ ,  $D \leq 1,5\%$

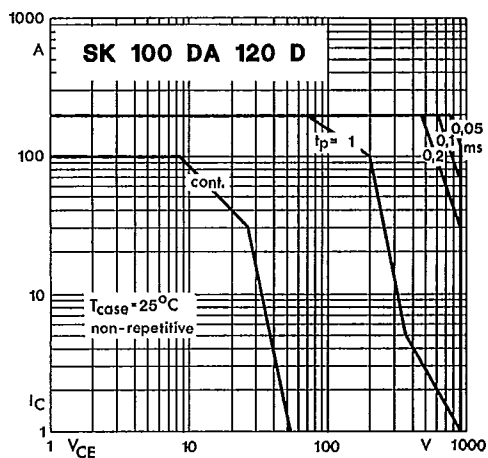


Fig. 1 Forward biased safe operating area (FBSOA)

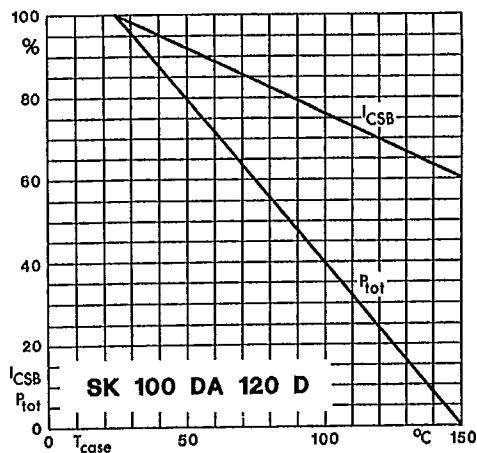


Fig. 2 Shifting the limits of the FBSOA with temperature

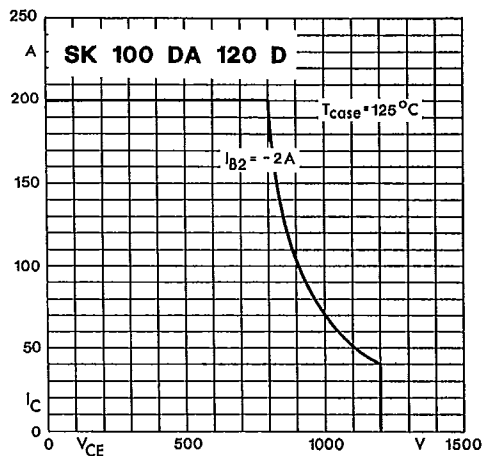


Fig. 3 Reverse biased safe operating area (RBSOA)

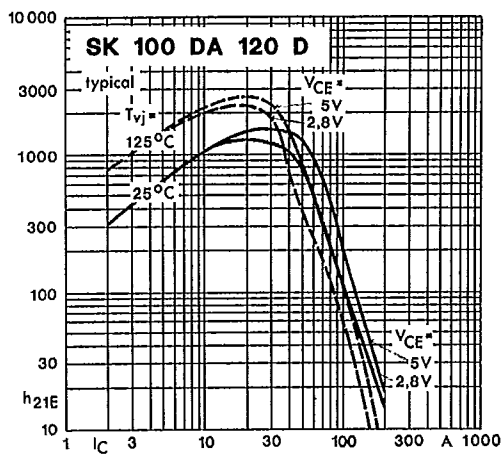


Fig. 4 Forward current transfer ratio vs. coll. current

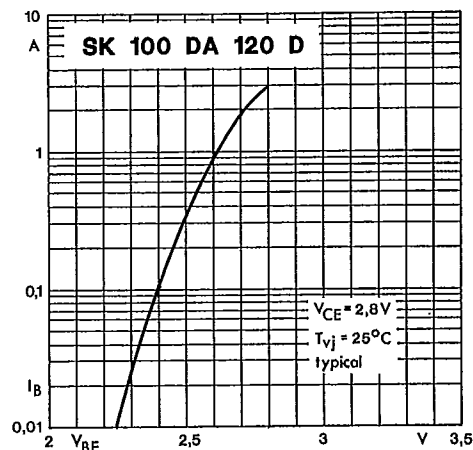


Fig. 5 Base current/voltage characteristic

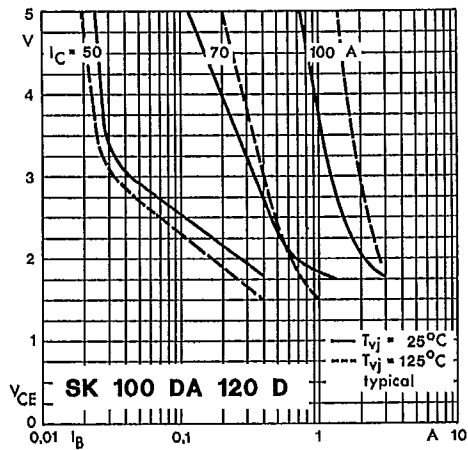
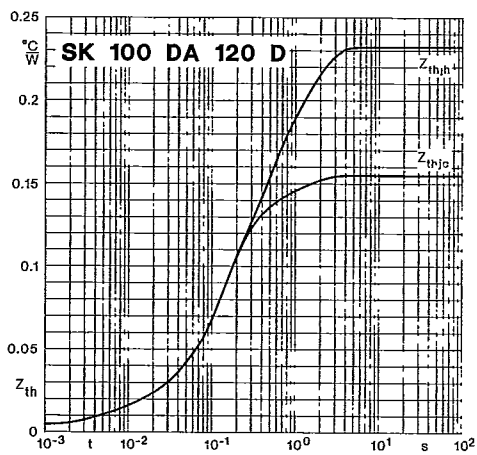
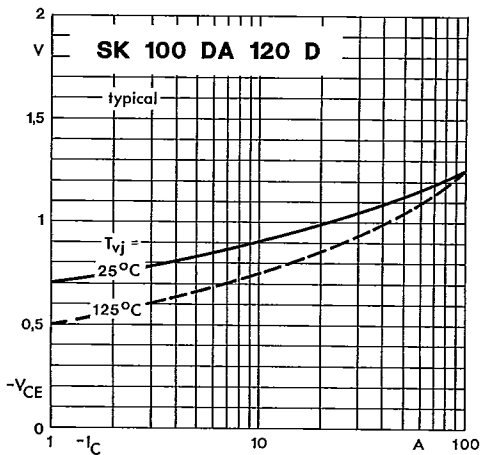
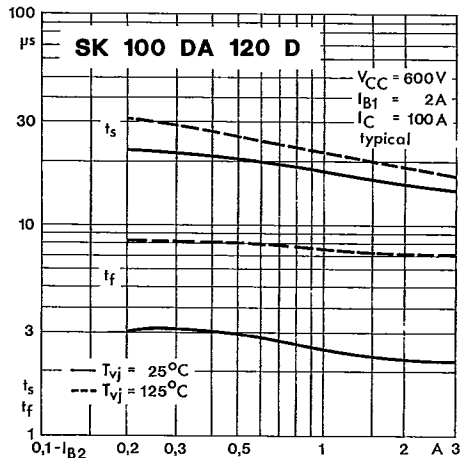
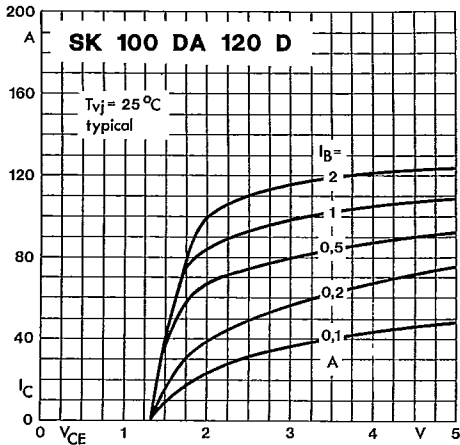
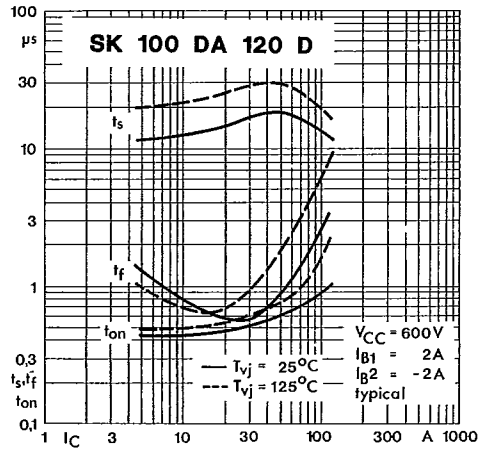
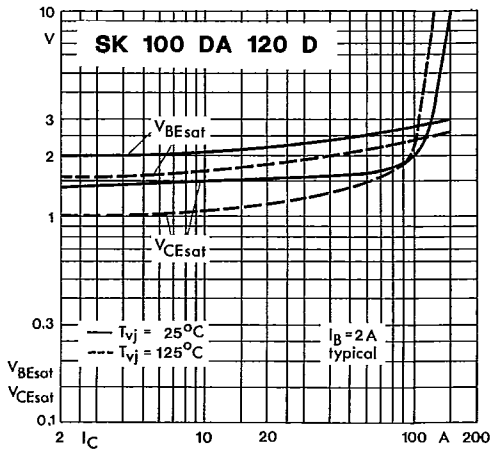


Fig. 6 Collector-emitter voltage vs. base current

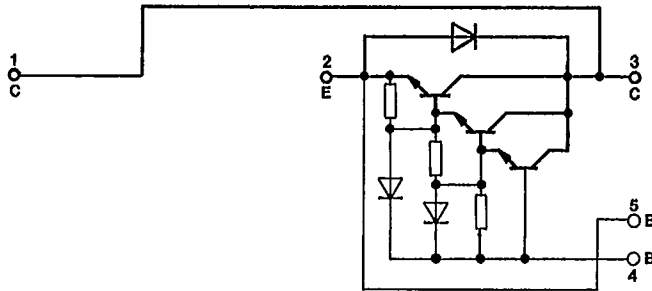
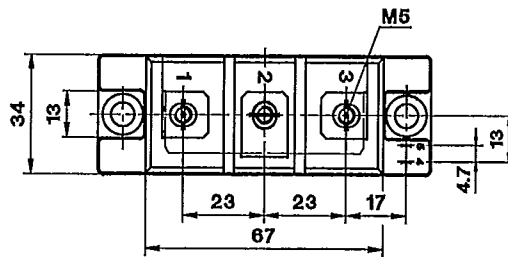
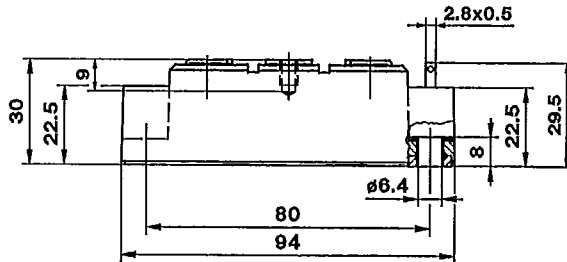


**SK 100 DA 120 D**

### Case D 16

SEMITRANS® 3

UL recognized, file no. E 63 532



Dimensions in mm