

# SHARP

## LM12S49

Color STN-LCD Module  
(FA/POS/Measuring instruments)

### Features

- 31 cm [12.1"] SVGA format
- High brightness (180 cd/m<sup>2</sup>)
- Built-in long life CCFT backlight (40 000 h, [Typ.])

### Specifications

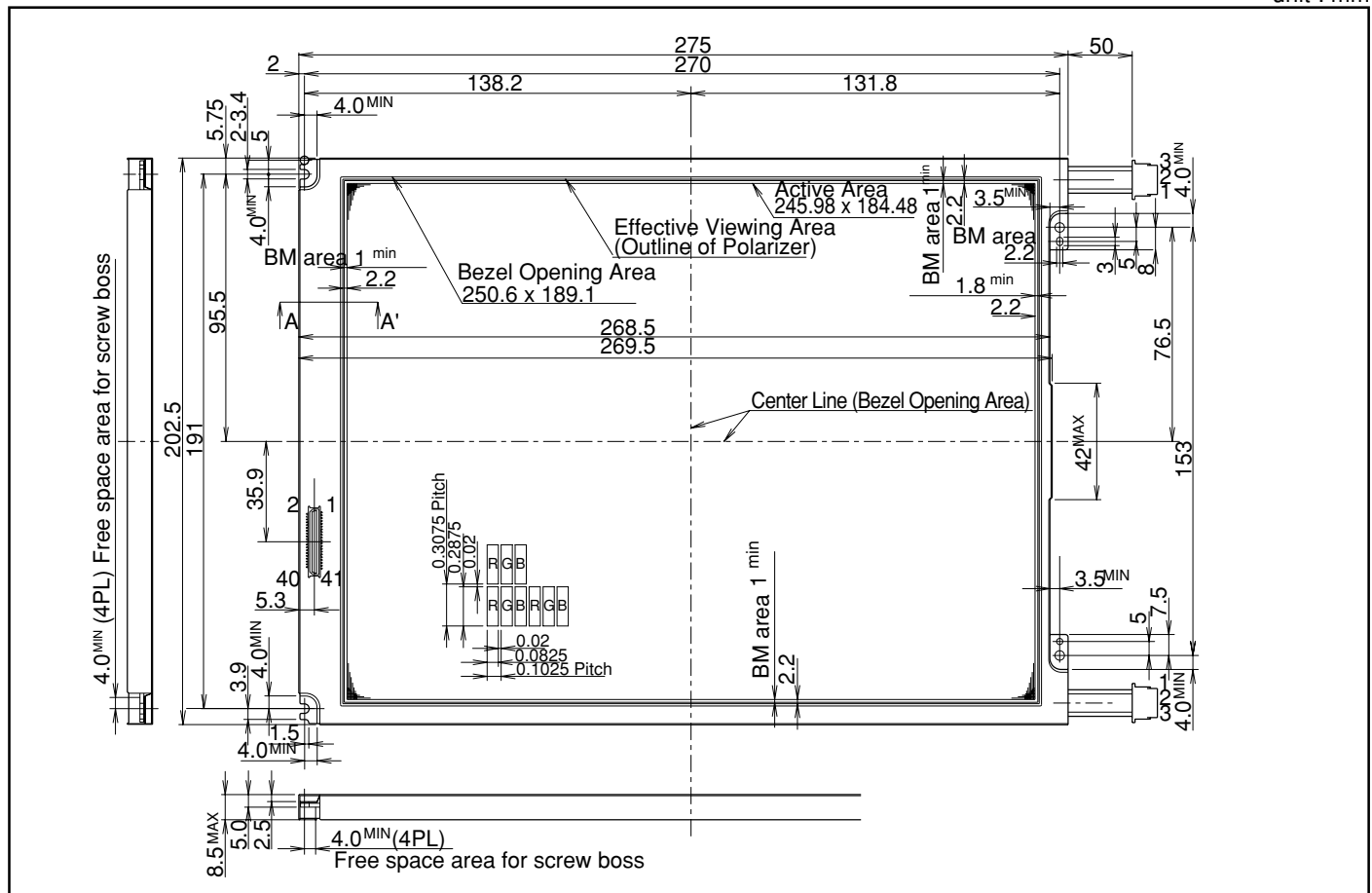
| Parameter           |                 | Unit              |
|---------------------|-----------------|-------------------|
| Display size        | 31 [12.1]       | cm ["]            |
| Dot format (H x V)  | 800 x RGB x 600 | dot               |
| Dot pitch (H x V)   | 0.1025 x 0.3075 | mm                |
| Active area (H x V) | 246.0 x 184.5   | mm                |
| Panel type          | *1              | -                 |
| Panel mode          | Transmissive    | -                 |
| Contrast ratio      | 40 : 1          | -                 |
| Response time       | 300             | ms                |
| Brightness          | 180             | cd/m <sup>2</sup> |

| Parameter                      |                     | Unit |
|--------------------------------|---------------------|------|
| Backlight type                 | 2CCFT(E)            | -    |
| Duty ratio                     | 1/300               | -    |
| Logic voltage                  | 5.0 Vcon            | V    |
| Power consumption              | 7 030               | mW   |
| Outline dimensions (W x H x D) | 275.0 x 202.5 x 8.5 | mm   |
| Weight                         | 550                 | g    |
| Operating temperature          | 0 to +40            | °C   |
| Storage temperature            | -25 to +60          | °C   |

\*1...Triple Super Twisted Nematic

### Outline Dimensions

unit : mm



In the absence of confirmation by device specification sheets, SHARP takes no responsibility for any defects that may occur in using any SHARP devices shown in catalogs, data books, etc. Contact SHARP in order to obtain the latest device specification sheets before using any SHARP device. Specifications are subject to change without notice for improvement.