



Advanced Pulse Power Devices

www.siliconpower.com

1-866-TO-SOLID

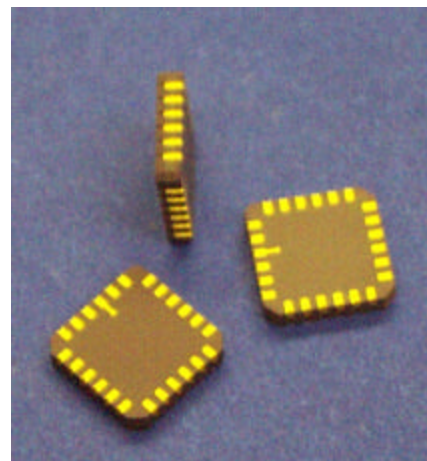
Voltage Controlled Solidtron (VCS)

Part# VCSLC05N20A10

Features:

- * Surface mount 24pin LLCC package
- * 2,000 A peak pulse current
- * 1,400 V_{AK}
- * 50 ns typical turn-on time
- * > 50 kA/us di/dt
- * < 1uA Leakage current at 1.5kV @ 75 C°

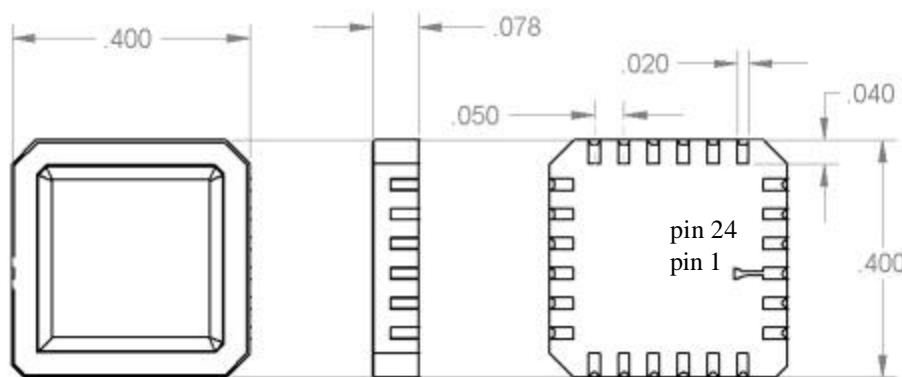
*Advance Technical
Bulletin*



The VCS features the high peak current capability and low on-state voltage drop common to SCR thyristors combined with extremely high di/dt capability. This solid-state device exhibits extremely low jitter and high reliability. Solidtrons are ideally suited for fast capacitor discharge applications.

The industry standard 24-pin LCC package allows for assembly of the Solidtron using automated insertion equipment.

Package Outline



Gate - 1
Gate rtn - 24
Cathode - 16 thru 22
Anode - 4 thru 11
NC - 2, 3, 12 thru 15

Tolerance +/- 2 mils,
all units in inches

For pricing and availability contact John Mookken at 1-866-TO-SOLID or
email solidtron@siliconpower.com