



LED GRAPHIC DISPLAY UNIT

Stanley LED graphic displays are made with super bright LEDs which guarantee a bright and clear display, including □160, and □240. Stanley provides 2 digit type LEDs such as □64, and □96, and 4 digit type LED mini modules such as □32 and □40. Many other kinds of LEDs are also available.

Description of Part Number

LMD 04 A - C RG 16 - 2U					
Outer Dimensions	No. of Dots	Type	Emitted Color	Duty	Suffix
04 : □64	256 (16x16)	C:Chip	RG:Red/Green	16:1/16 duty	
06 : □96		L:Lamp	(Bicolor)	S:Static	
10 : □160			RGB:Red/Green/Blue		
15 : □240			(Full Color)		
			Y:Yellow		

LED Mini Module

MM 12 16 C - RG 4 - L					
Outer Dimensions	No. of Dots	Type	Emitted Color	No. of Digits	Suffix
12:1.2 inch (32mm)	256 (16x16)	C:Chip	RG:Red/Green	4:4	
15:1.5 inch (40mm)			(Bicolor)		

LED Graphic Display Unit

(Ta=25°C)

Type	Size WxH	Shape	Part No.	Emitted Color	Peak Wave-length TYP.	Dot Size	Dot Pitch	Dot Format	Logic Circuit		Display Circuit		Luminosity TYP.	Viewing Angle MIN.	Data Transmission Speed MAX.	Driving Method	Fig.
									Input Volt Vcc1	Current Consump. Icc1 MAX.	Input Volt Vcc2	Current Consump. Icc2 MAX.					
Indoor Use	Bicolor	32 x 160	MM1216C-RG4-L	Red	660	φ1.6	2.0	16 x 64	5±0.25	120	3±0.25	2.4	70	120	10	1/16 Duty Drive	1
				Green	570								100				
		40 x 160	MM1516C-RG4-L	Red	660	φ1.8	2.5	16 x 64	5±0.25	500	3±0.25	3.7	55	120	7.5	1/16 Duty Drive	2
				Green	570								65				
	Bicolor	64 x 128	LMD04A-LRG16-2U	Red	660	-	4.0	16 x 32	5±0.25	120	3±0.30	3.0	170	120	5.0	1/16 Duty Drive	3
				Green	570								230				
		96 x 192	LMD06A-CRG16-2L	Red	660	φ4.8	6.0	16 x 32	5±0.25	150	3±0.25	3.6	90	120	2.0	1/16 Duty Drive	4
				Green	570								100				
Outdoor Use	Full Color	□160	LMD10A-LRGS	Red	660	φ7.5	9.9	16 x 16	5±0.25	300	2.75 ±0.25	10.5	1800	64	2.0	Static Drive	5
				Green	570								800				
		□160	LMD10A-LRGS-AS	Red	660	φ7.5	9.9	16 x 16	5±0.25	500	2.85 ±0.15	3.7	4200	20	2.0	Static Drive	6
				Green	570								2100				
		□240	LMD15A-LRGS-VB	Red	660	-	15.0	16 x 16	5±0.25	600	5±0.25	10.1	2400	50	2.0	Static Drive	7
				Green	570								1800				
	Yellow	□240	LMD15A-LYS	Yellow	592	-	15.0	16 x 16	5±0.25	500	5±0.25	12.0	5000	120	2.0	Static Drive	8
	Full Color	□240	LMD15A-LRGB-F3	Red	626	-	15.0	16 x 16	5±0.25		3±0.25	9.2	1200			Static Drive	9
				Green	525						4±0.25	5.2	3100	120	7.5		
				Blue	470						4±0.25	4.2	700				
	mm	Unit			nm	mm	mm	dot	V	mA	V	A	cd/m ²	deg.	MHz		

Characteristics

Type	Operating Temperature	Storage Temperature
*1 MM	-5~+45	-20~+70
LMD (Indoor Use)	-20~+60	-30~+80
LMD (Outdoor Use)	-20~+70	-30~+80
Unit	Topr	Tstg

*1 When being used, the temperature of the case should be 70°C.



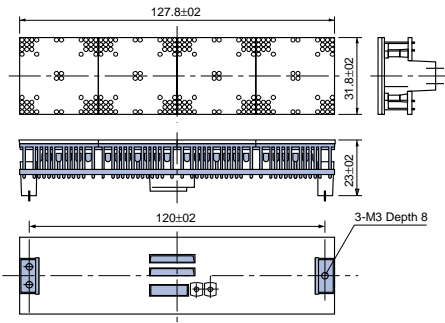
LED GRAPHIC DISPLAY UNIT

Module Dimensions

Unit: mm

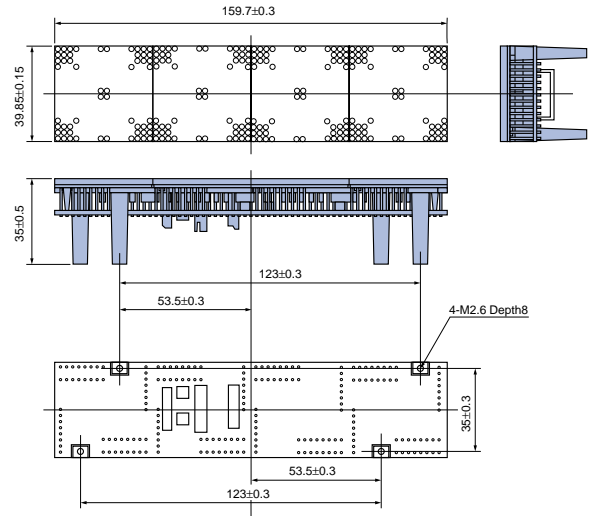
□ 32x160 [MM1216C-RG4-L]

Fig. 1



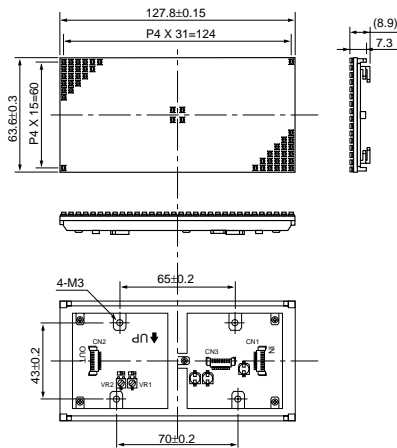
□ 40x160 [MM1516C-RG4-L]

Fig. 2



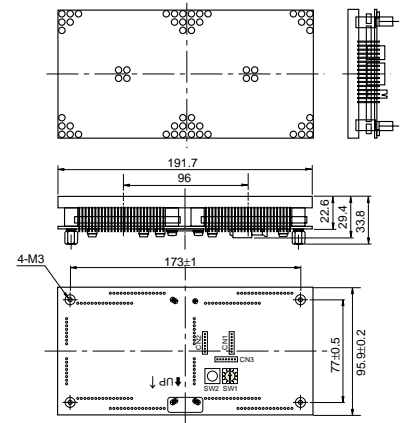
□ 64x128 [LMD04A-LRG16-2U]

Fig. 3



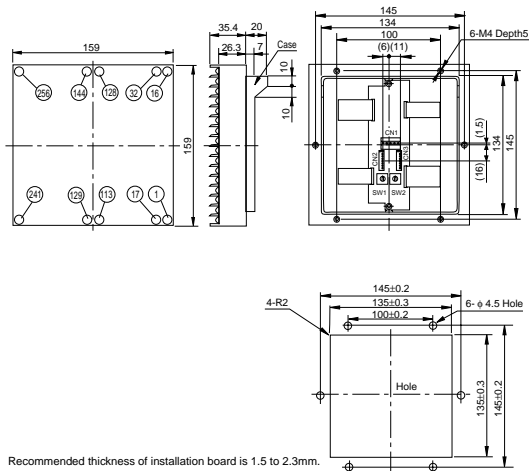
□ 96x192 [LMD06A-CRG16-2L]

Fig. 4



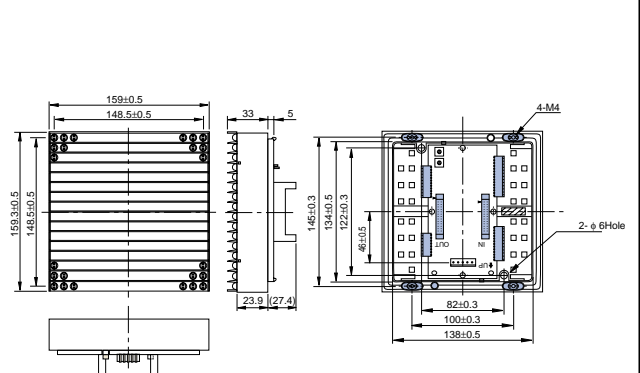
□ 160 [LMD10A-LRGS]

Fig. 5



□ 160 [LMD10A-LRGS-AS]

Fig. 6



■ Module Dimensions

Unit: mm

Fig. 7

