

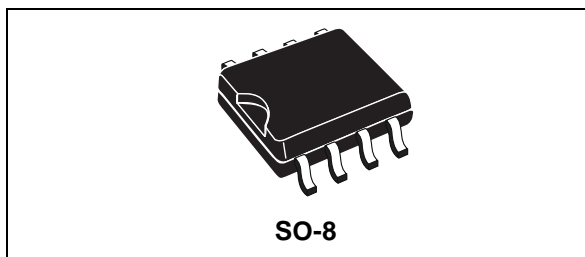


# STS4DPFS30L

P-CHANNEL 30V - 0.07Ω - 4A SO-8

STripFET™ MOSFET PLUS SCHOTTKY RECTIFIER

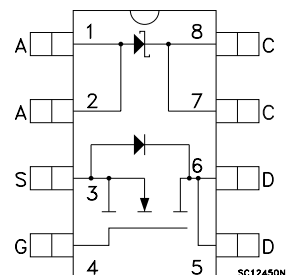
MAIN PRODUCT CHARACTERISTICS			
MOSFET	V <sub>DSS</sub>	R <sub>DS(on)</sub>	I <sub>D</sub>
	30 V	< 0.08 Ω	4 A
SCHOTTKY	I <sub>F(AV)</sub>	V <sub>RRM</sub>	V <sub>F(MAX)</sub>
	3 A	30 V	0.51 V



## DESCRIPTION

This product associates the latest low voltage STripFET™ in p-channel version to a low drop Schottky diode. Such configuration is extremely versatile in implementing, a large variety of DC-DC converters for printers, portable equipment, and cellular phones.

## INTERNAL SCHEMATIC DIAGRAM



## MOSFET ABSOLUTE MAXIMUM RATINGS

Symbol	Parameter	Value	Unit
V <sub>DS</sub>	Drain-source Voltage (V <sub>GS</sub> = 0)	30	V
V <sub>DGR</sub>	Drain-gate Voltage (R <sub>GS</sub> = 20 kΩ)	30	V
V <sub>GS</sub>	Gate- source Voltage	± 20	V
I <sub>D</sub>	Drain Current (continuous) at T <sub>C</sub> = 25°C	4	A
I <sub>D</sub>	Drain Current (continuous) at T <sub>C</sub> = 100°C	3.4	A
I <sub>DM</sub> (●)	Drain Current (pulsed)	16	A
P <sub>TOT</sub>	Total Dissipation at T <sub>C</sub> = 25°C	1.6	W

## SCHOTTKY ABSOLUTE MAXIMUM RATINGS

Symbol	Parameter	Value	Unit
V <sub>RRM</sub>	Repetitive Peak Reverse Voltage	30	V
I <sub>F(RMS)</sub>	RMS Forward Current	20	A
I <sub>F(AV)</sub>	Average Forward Current	3	A
I <sub>FSM</sub>	Surge Non Repetitive Forward Current	75	A
I <sub>RRM</sub>	Repetitive Peak Reverse Current	1	A
I <sub>RSM</sub>	Non Repetitive Peak Reverse Current	1	A
dv/dt	Critical Rate Of Rise Of Reverse Voltage	Note: For the P-CHANNEL MOSFET actual polarity of Voltages and current has to be reversed	1000 V/μs

## STS4DPFS30L

### THERMAL DATA

Rthj-amb	(*)Thermal Resistance Junction-ambient MOSFET	85	°C/W
Rthj-amb	(*)Thermal Resistance Junction-ambient SCHOTTKY	100	°C/W
T <sub>stg</sub>	Storage Temperature Range	-55 to 150	°C
T <sub>J</sub>	Junction Temperature	150	°C
(*) Mounted on FR-4 board (Steady State)			

### MOSFET ELECTRICAL CHARACTERISTICS (TCASE = 25 °C UNLESS OTHERWISE SPECIFIED) OFF

Symbol	Parameter	Test Conditions	Min.	Typ.	Max.	Unit
V <sub>(BR)DSS</sub>	Drain-source Breakdown Voltage	I <sub>D</sub> = 250 µA, V <sub>GS</sub> = 0	20			V
I <sub>DSS</sub>	Zero Gate Voltage Drain Current (V <sub>GS</sub> = 0)	V <sub>DS</sub> = Max Rating V <sub>DS</sub> = Max Rating, T <sub>C</sub> = 125 °C			1 10	µA µA
I <sub>GSS</sub>	Gate-body Leakage Current (V <sub>DS</sub> = 0)	V <sub>GS</sub> = ± 20 V			±100	nA

### ON (1)

Symbol	Parameter	Test Conditions	Min.	Typ.	Max.	Unit
V <sub>GS(th)</sub>	Gate Threshold Voltage	V <sub>DS</sub> = V <sub>GS</sub> , I <sub>D</sub> = 250µA	1	1.6	2.5	V
R <sub>DS(on)</sub>	Static Drain-source On Resistance	V <sub>GS</sub> = 10V, I <sub>D</sub> = 2 A V <sub>GS</sub> = 4.5V, I <sub>D</sub> = 2 A		0.07 0.08	0.08 0.095	Ω
I <sub>D(on)</sub>	On State Drain Current	V <sub>DS</sub> > I <sub>D(on)</sub> × R <sub>DS(on)max</sub> , V <sub>GS</sub> = 10V	16			A

### DYNAMIC

Symbol	Parameter	Test Conditions	Min.	Typ.	Max.	Unit
g <sub>fs</sub> (1)	Forward Transconductance	V <sub>DS</sub> > I <sub>D(on)</sub> × R <sub>DS(on)max</sub> , I <sub>D</sub> = 2 A		5		S
C <sub>iss</sub>	Input Capacitance	V <sub>DS</sub> = 25V, f = 1 MHz, V <sub>GS</sub> = 0		1350		pF
C <sub>oss</sub>	Output Capacitance			490		pF
C <sub>rss</sub>	Reverse Transfer Capacitance			130		pF

**ELECTRICAL CHARACTERISTICS (CONTINUED)****SWITCHING ON**

Symbol	Parameter	Test Conditions	Min.	Typ.	Max.	Unit
$t_{d(on)}$	Turn-on Delay Time	$V_{DD} = 15V$ , $I_D = 3A$ $R_G = 4.7\Omega$		25		ns
$t_r$	Rise Time	$V_{GS} = 10V$ (see test circuit, Figure 3)		35		ns
$Q_g$	Total Gate Charge	$V_{DD} = 24V$ , $I_D = 6A$ , $V_{GS} = 4.5 V$		12.5	16	nC
$Q_{gs}$	Gate-Source Charge			5		nC
$Q_{gd}$	Gate-Drain Charge			3		nC

**SWITCHING OFF**

Symbol	Parameter	Test Conditions	Min.	Typ.	Max.	Unit
$t_{d(off)}$	Turn-off Delay Time	$V_{DD} = 15 V$ , $I_D = 2A$ , $R_G = 4.7\Omega$ , $V_{GS} = 4.5 V$		125		ns
$t_f$	Fall Time	(see test circuit, Figure 3)		30		ns
$t_{r(Voff)}$	Off-voltage Rise Time	$V_{clamp} = 24 V$ , $I_D = 6 A$ , $R_G = 4.7\Omega$ , $V_{GS} = 4.5 V$		83		ns
$t_f$	Fall Time	(see test circuit, Figure 5)		40		ns
$t_c$	Cross-over Time			75		ns

**SOURCE DRAIN DIODE**

Symbol	Parameter	Test Conditions	Min.	Typ.	Max.	Unit
$I_{SD}$	Source-drain Current				4	A
$I_{SDM(2)}$	Source-drain Current (pulsed)				16	A
$V_{SD(1)}$	Forward On Voltage	$I_{SD} = 4 A$ , $V_{GS} = 0$			1.2	V
$t_{rr}$	Reverse Recovery Time	$I_{SD} = 4 A$ , $di/dt = 100A/\mu s$ , $V_{DD} = 15 V$ , $T_J = 150^\circ C$		45		ns
$Q_{rr}$	Reverse Recovery Charge	(see test circuit, Figure 5)		36		nC
$I_{RRM}$	Reverse Recovery Current			1.6		A

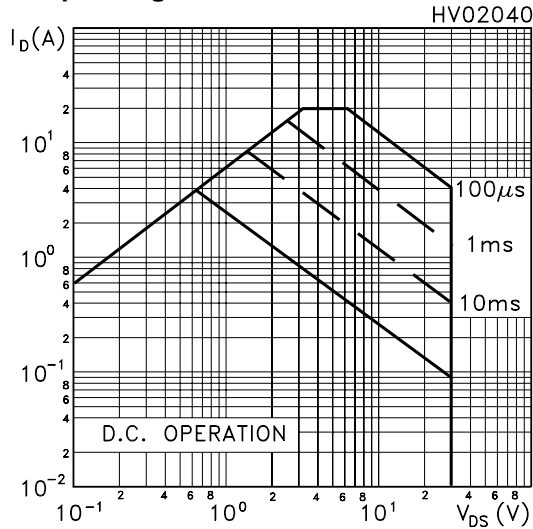
Note: 1. Pulsed: Pulse duration = 300  $\mu s$ , duty cycle 1.5 %.

2. Pulse width limited by safe operating area.

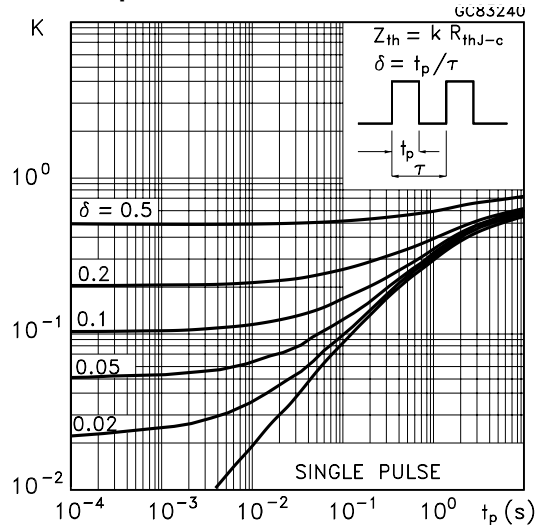
**SCHOTTKY STATIC ELECTRICAL CHARACTERISTICS**

Symbol	Parameter	Test Conditions	Min.	Typ.	Max.	Unit
$I_R(^*)$	Reversed Leakage Current	$T_J = 25^\circ C$ , $V_R = 30 V$ $T_J = 125^\circ C$ , $V_R = 30 V$		0.03	0.2 100	mA mA
$V_F(^*)$	Forward Voltage Drop	$T_J = 25^\circ C$ , $I_F = 3 A$ $T_J = 125^\circ C$ , $I_F = 3 A$		0.46	0.51 0.46	V V

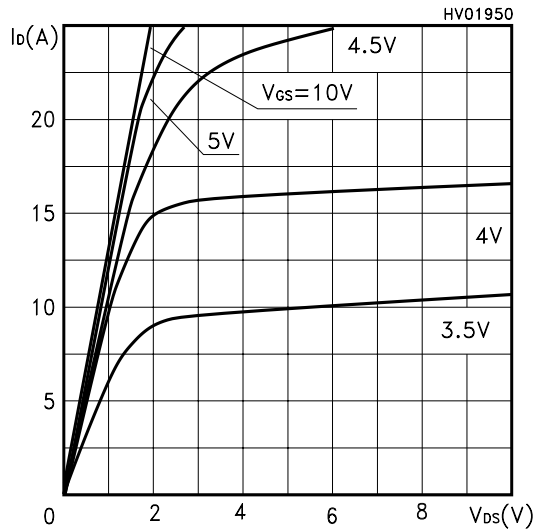
Safe Operating Area



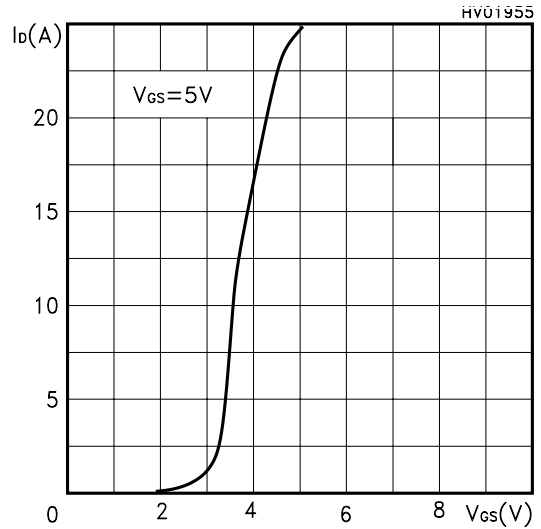
Thermal Impedance



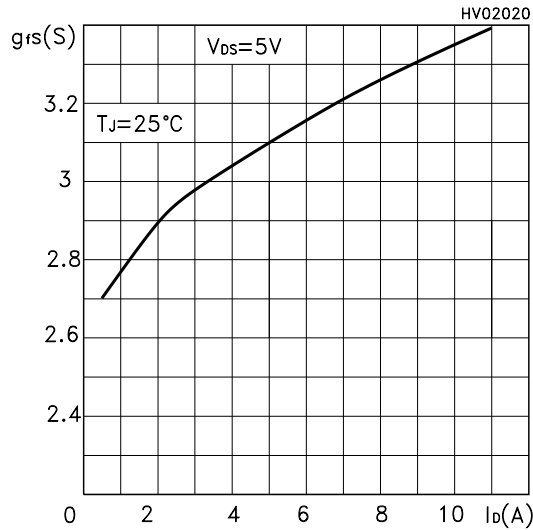
Output Characteristics



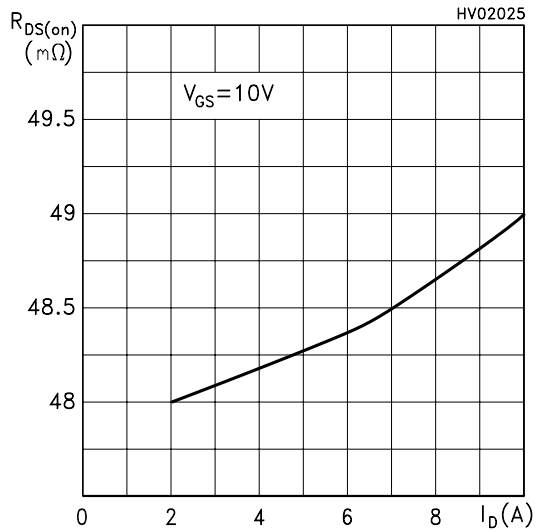
Transfer Characteristics



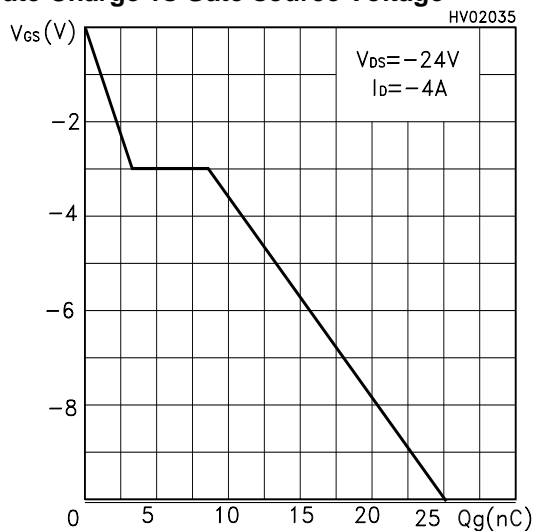
Transconductance



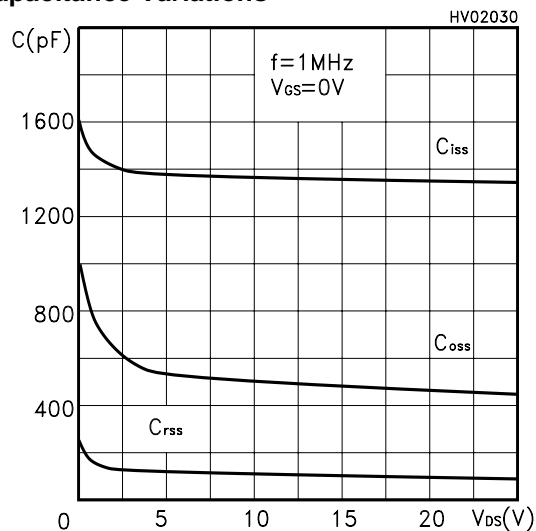
Static Drain-source On Resistance



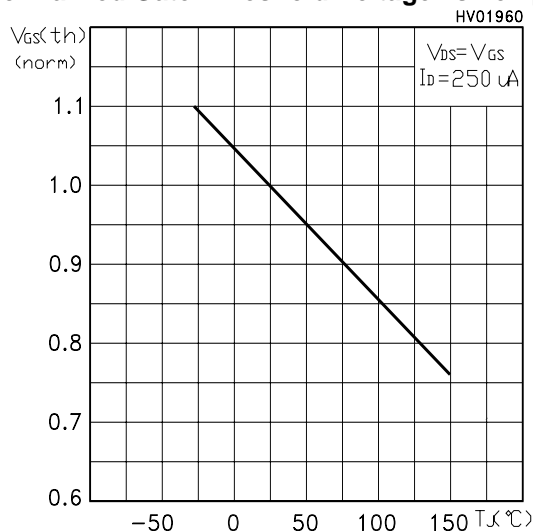
Gate Charge vs Gate-source Voltage



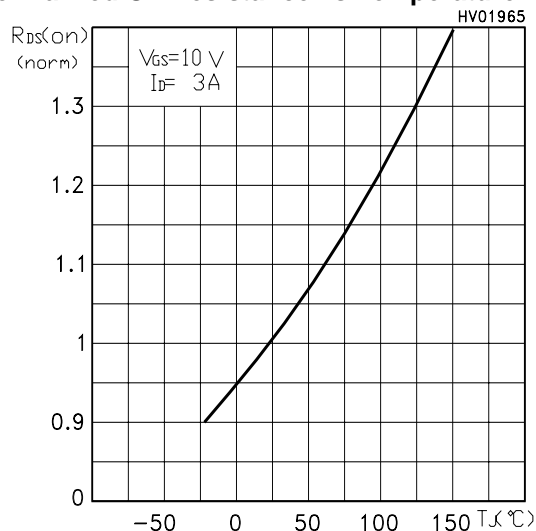
Capacitance Variations



Normalized Gate Threshold Voltage vs Temp.



Normalized On Resistance vs Temperature



Source-drain Diode Forward Characteristics

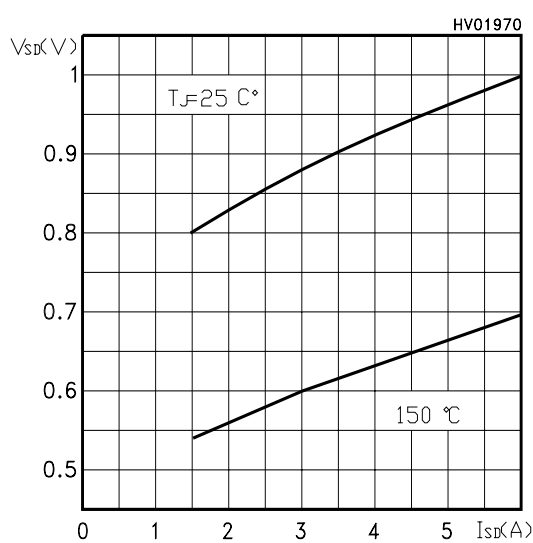


Fig. 1: Unclamped Inductive Load Test Circuit

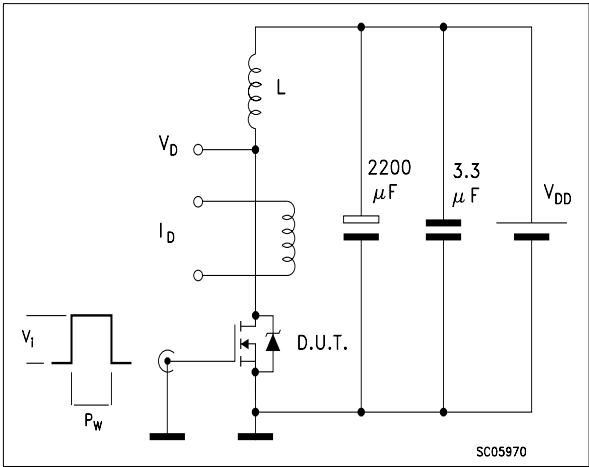


Fig. 2: Unclamped Inductive Waveform

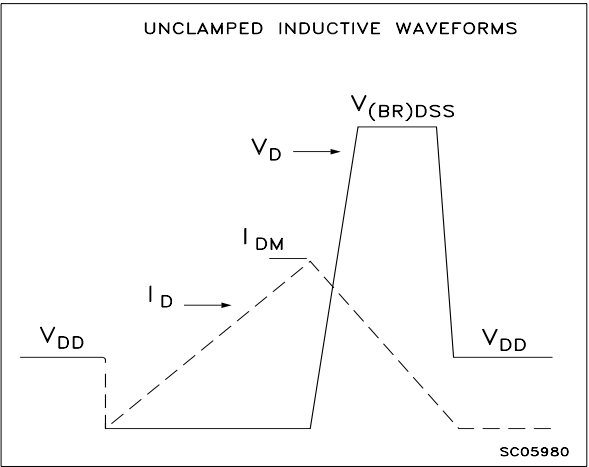


Fig. 3: Switching Times Test Circuits For Resistive Load

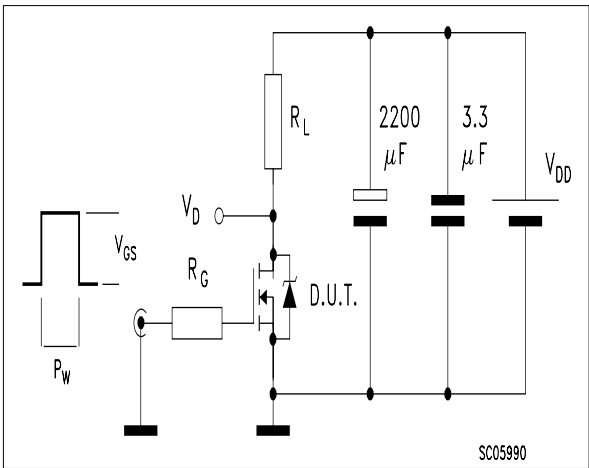


Fig. 4: Gate Charge test Circuit

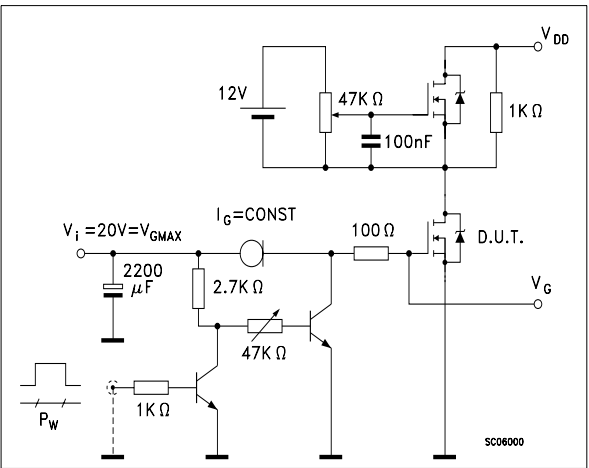
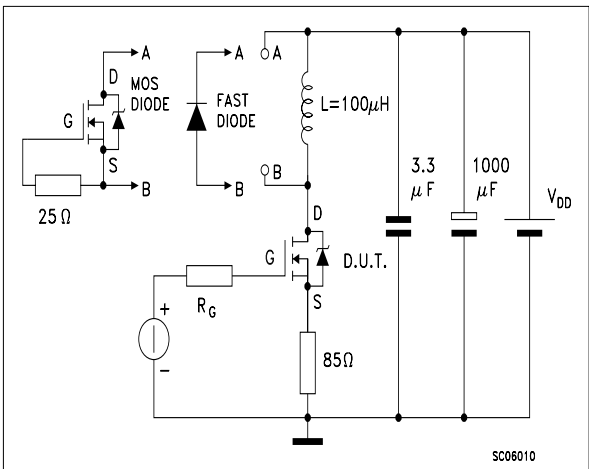
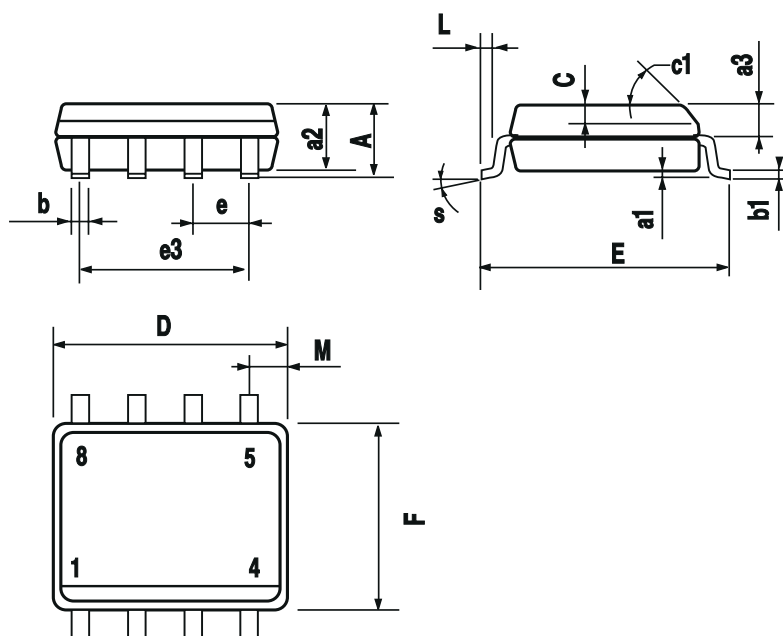


Fig. 5: Test Circuit For Inductive Load Switching And Diode Recovery Times



## SO-8 MECHANICAL DATA

DIM.	mm			inch		
	MIN.	TYP.	MAX.	MIN.	TYP.	MAX.
A			1.75			0.068
a1	0.1		0.25	0.003		0.009
a2			1.65			0.064
a3	0.65		0.85	0.025		0.033
b	0.35		0.48	0.013		0.018
b1	0.19		0.25	0.007		0.010
C	0.25		0.5	0.010		0.019
c1	45 (typ.)					
D	4.8		5.0	0.188		0.196
E	5.8		6.2	0.228		0.244
e		1.27			0.050	
e3		3.81			0.150	
F	3.8		4.0	0.14		0.157
L	0.4		1.27	0.015		0.050
M			0.6			0.023
S	8 (max.)					



0016023

Information furnished is believed to be accurate and reliable. However, STMicroelectronics assumes no responsibility for the consequences of use of such information nor for any infringement of patents or other rights of third parties which may result from its use. No license is granted by implication or otherwise under any patent or patent rights of STMicroelectronics. Specification mentioned in this publication are subject to change without notice. This publication supersedes and replaces all information previously supplied. STMicroelectronics products are not authorized for use as critical components in life support devices or systems without express written approval of STMicroelectronics.

The ST logo is a trademark of STMicroelectronics

© 2000 STMicroelectronics – Printed in Italy – All Rights Reserved

STMicroelectronics GROUP OF COMPANIES

Australia - Brazil - China - Finland - France - Germany - Hong Kong - India - Italy - Japan - Malaysia - Malta - Morocco -  
Singapore - Spain - Sweden - Switzerland - United Kingdom - U.S.A.

<http://www.st.com>