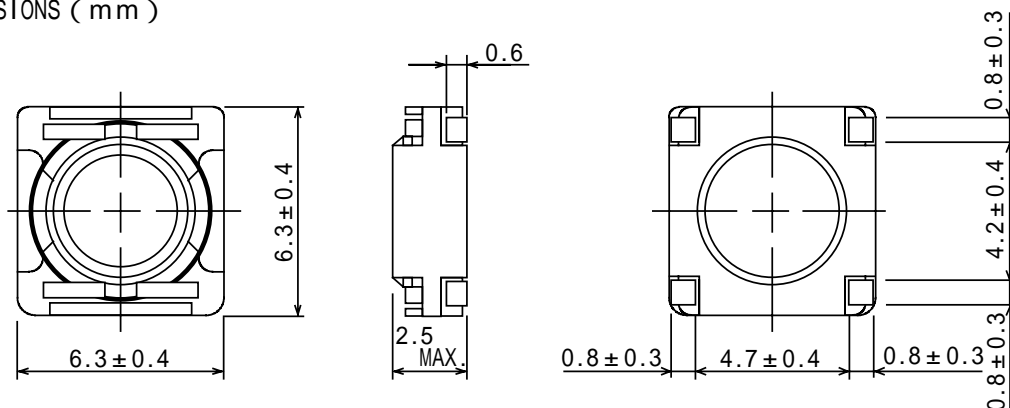


SPECIFICATION

TYPE
CDRC62

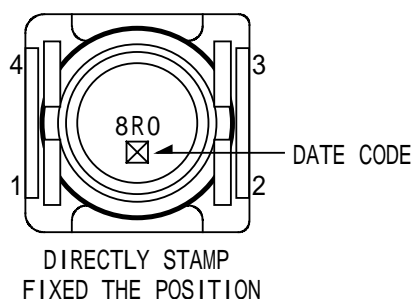
1. APPEARANCE

1-1. DIMENSIONS (mm)

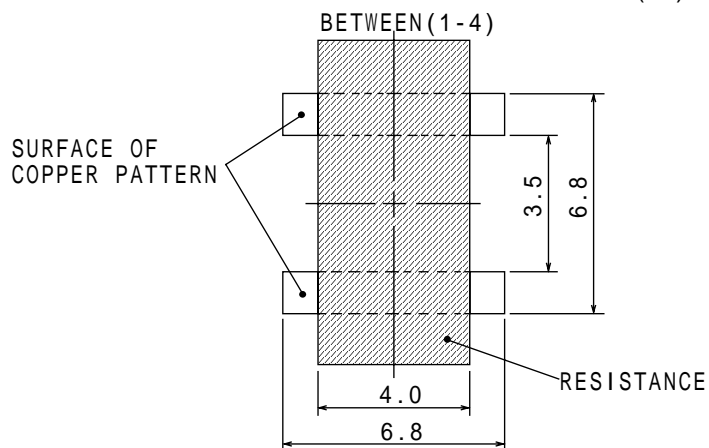


* DIMENSION WITHOUT TOLERANCE ARE APPROX.

1-2. STAMP (E.G.)



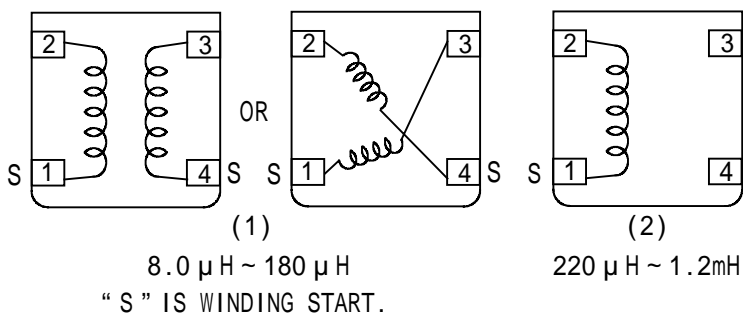
1-3. RECOMMENDED LAND PATTERNS DIMENSION (mm)



PLEASE MAKE SURE TO MAKE THE RESISTANCE, WHEN TERMINAL #1 IS CONNECTED TO #4 AND TERMINAL #2 IS CONNECTED TO #3 WITH COPPER PATTERN UNDER THE COIL.

2. COIL SPECIFICATION

2-1. CONNECTION (BOTTOM VIEW)



RoHS

compliance
Cd: Max. 0.01wt%
others: Max. 0.1wt%

SPECIFICATION

TYPE
CDRC62

2-2 . ELECTRICAL CHARACTERISTICS (IN THE CASE OF REEL)

| NO. | PART NO. | STAMP | INDUCTANCE [WITHIN] 1 | D.C.R. () [MAX.] (at 20) 3 | RATED CURRENT (mA) 2 | S.R.F. (MHz) [TYP.] | SUMIDA CODE |
|-----|----------------|-------|-----------------------------|--|-------------------------------|---------------------------|----------------|
| 01 | CDRC62NP-8R0NC | 8R0 | 8 μ H \pm 25% | 0.077 (0.062) | 764 | 38.6 | 4747-0069 |
| 02 | CDRC62NP-100NC | 100 | 10 μ H \pm 25% | 0.104 (0.083) | 712 | 33.9 | 4747-0070 |
| 03 | CDRC62NP-150NC | 150 | 15 μ H \pm 25% | 0.131 (0.105) | 556 | 27.6 | 4747-0071 |
| 04 | CDRC62NP-220NC | 220 | 22 μ H \pm 25% | 0.200 (0.160) | 467 | 23.0 | 4747-0072 |
| 05 | CDRC62NP-330NC | 330 | 33 μ H \pm 25% | 0.264 (0.211) | 374 | 18.9 | 4747-0073 |
| 06 | CDRC62NP-390NC | 390 | 39 μ H \pm 25% | 0.381 (0.305) | 354 | 16.9 | 4747-0074 |
| 07 | CDRC62NP-470NC | 470 | 47 μ H \pm 25% | 0.430 (0.344) | 320 | 15.0 | 4747-0075 |
| 08 | CDRC62NP-560NC | 560 | 56 μ H \pm 25% | 0.480 (0.384) | 290 | 14.0 | 4747-0076 |
| 09 | CDRC62NP-680NC | 680 | 68 μ H \pm 25% | 0.624 (0.499) | 248 | 12.2 | 4747-0077 |
| 10 | CDRC62NP-820NC | 820 | 82 μ H \pm 25% | 0.671 (0.537) | 237 | 11.4 | 4747-0078 |
| 11 | CDRC62NP-101MC | 101 | 100 μ H \pm 20% | 0.769 (0.615) | 212 | 10.2 | 4747-0080 |
| 12 | CDRC62NP-121MC | 121 | 120 μ H \pm 20% | 1.02 (0.816) | 194 | 9.4 | 4747-0082 |
| 13 | CDRC62NP-151MC | 151 | 150 μ H \pm 20% | 1.43 (1.14) | 174 | 8.6 | 4747-0083 |
| 14 | CDRC62NP-181MC | 181 | 180 μ H \pm 20% | 1.60 (1.28) | 160 | 7.5 | 4747-0084 |
| 15 | CDRC62NP-221MC | 221 | 220 μ H \pm 20% | 1.77 (1.42) | 142 | 7.2 | 4747-0085 |
| 16 | CDRC62NP-271MC | 271 | 270 μ H \pm 20% | 2.30 (1.84) | 130 | 6.5 | 4747-0086 |
| 17 | CDRC62NP-331MC | 331 | 330 μ H \pm 20% | 2.71 (2.16) | 117 | 5.8 | 4747-0087 |
| 18 | CDRC62NP-391MC | 391 | 390 μ H \pm 20% | 3.02 (2.42) | 108 | 5.3 | 4747-0088 |
| 19 | CDRC62NP-471MC | 471 | 470 μ H \pm 20% | 3.93 (3.14) | 98 | 4.8 | 4747-0089 |
| 20 | CDRC62NP-561MC | 561 | 560 μ H \pm 20% | 4.46 (3.57) | 91 | 4.4 | 4747-0090 |
| 21 | CDRC62NP-681MC | 681 | 680 μ H \pm 20% | 6.05 (4.84) | 83 | 4.0 | 4747-0091 |
| 22 | CDRC62NP-821MC | 821 | 820 μ H \pm 20% | 6.79 (5.43) | 75 | 3.7 | 4747-0093 |
| 23 | CDRC62NP-102MC | 102 | 1.0 mH \pm 20% | 9.98 (7.98) | 66 | 3.3 | 4747-0094 |
| 24 | CDRC62NP-122MC | 122 | 1.2 mH \pm 20% | 11.8 (9.44) | 62 | 3.0 | 4747-0095 |

SPECIFICATION

TYPE
CDRC62

2-3.ELECTRICAL CHARACTERISTICS (IN THE CASE OF BOX)

| NO. | PART NO. | STAMP | INDUCTANCE [WITHIN] 1 | D.C.R. () [MAX.] (at 20) 3 | RATED CURRENT (mA) 2 | S.R.F. (MHz) [TYP.] | SUMIDA CODE |
|-----|----------------|-------|-----------------------------|--|-------------------------------|---------------------------|----------------|
| 25 | CDRC62NP-8R0NB | 8R0 | 8 μ H \pm 25% | 0.077 (0.062) | 764 | 38.6 | 4747-0096 |
| 26 | CDRC62NP-100NB | 100 | 10 μ H \pm 25% | 0.104 (0.083) | 712 | 33.9 | 4747-0097 |
| 27 | CDRC62NP-150NB | 150 | 15 μ H \pm 25% | 0.131 (0.105) | 556 | 27.6 | 4747-0098 |
| 28 | CDRC62NP-220NB | 220 | 22 μ H \pm 25% | 0.200 (0.160) | 467 | 23.0 | 4747-0099 |
| 29 | CDRC62NP-330NB | 330 | 33 μ H \pm 25% | 0.264 (0.211) | 374 | 18.9 | 4747-0100 |
| 30 | CDRC62NP-390NB | 390 | 39 μ H \pm 25% | 0.381 (0.305) | 354 | 16.9 | 4747-0101 |
| 31 | CDRC62NP-470NB | 470 | 47 μ H \pm 25% | 0.430 (0.344) | 320 | 15.0 | 4747-0102 |
| 32 | CDRC62NP-560NB | 560 | 56 μ H \pm 25% | 0.480 (0.384) | 290 | 14.0 | 4747-0104 |
| 33 | CDRC62NP-680NB | 680 | 68 μ H \pm 25% | 0.624 (0.499) | 248 | 12.2 | 4747-0105 |
| 34 | CDRC62NP-820NB | 820 | 82 μ H \pm 25% | 0.671 (0.537) | 237 | 11.4 | 4747-0106 |
| 35 | CDRC62NP-101MB | 101 | 100 μ H \pm 20% | 0.769 (0.615) | 212 | 10.2 | 4747-0107 |
| 36 | CDRC62NP-121MB | 121 | 120 μ H \pm 20% | 1.02 (0.816) | 194 | 9.4 | 4747-0108 |
| 37 | CDRC62NP-151MB | 151 | 150 μ H \pm 20% | 1.43 (1.14) | 174 | 8.6 | 4747-0109 |
| 38 | CDRC62NP-181MB | 181 | 180 μ H \pm 20% | 1.60 (1.28) | 160 | 7.5 | 4747-0110 |
| 39 | CDRC62NP-221MB | 221 | 220 μ H \pm 20% | 1.77 (1.42) | 142 | 7.2 | 4747-0111 |
| 40 | CDRC62NP-271MB | 271 | 270 μ H \pm 20% | 2.30 (1.84) | 130 | 6.5 | 4747-0112 |
| 41 | CDRC62NP-331MB | 331 | 330 μ H \pm 20% | 2.71 (2.16) | 117 | 5.8 | 4747-0113 |
| 42 | CDRC62NP-391MB | 391 | 390 μ H \pm 20% | 3.02 (2.42) | 108 | 5.3 | 4747-0115 |
| 43 | CDRC62NP-471MB | 471 | 470 μ H \pm 20% | 3.93 (3.14) | 98 | 4.8 | 4747-0116 |
| 44 | CDRC62NP-561MB | 561 | 560 μ H \pm 20% | 4.46 (3.57) | 91 | 4.4 | 4747-0117 |
| 45 | CDRC62NP-681MB | 681 | 680 μ H \pm 20% | 6.05 (4.84) | 83 | 4.0 | 4747-0118 |
| 46 | CDRC62NP-821MB | 821 | 820 μ H \pm 20% | 6.79 (5.43) | 75 | 3.7 | 4747-0119 |
| 47 | CDRC62NP-102MB | 102 | 1.0 mH \pm 20% | 9.98 (7.98) | 66 | 3.3 | 4747-0120 |
| 48 | CDRC62NP-122MB | 122 | 1.2 mH \pm 20% | 11.8 (9.44) | 62 | 3.0 | 4747-0121 |

1 : MEASURED FREQUENCY L 8.0 μ H ~ 82 μ H ; at 100kHz
100 μ H ~ 1.2mH ; at 1kHz

2: THIS INDICATES THE VALUE OF CURRENT WHEN THE INDUCTANCE IS 25% LOWER THAN ITS NOMINAL VALUE
AT D.C. SUPERPOSITION OR D.C. CURRENT WHEN T=40 WHICHEVER IS LOWER.(Ta=20)

3: D.C.R. () IS TYPICAL VALUE.

3. STORAGE TEMPERATURE RANGE : - 40 ~ + 100

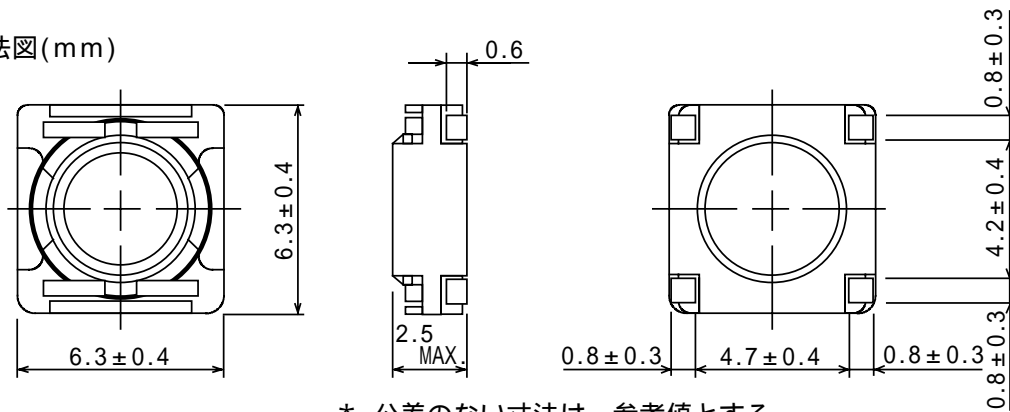
OPERATING TEMPERATURE RANGE: - 40 ~ + 100 (INCLUDING SELF TEMPERATURE RISE)

仕 様 書

| |
|-------------|
| 形 名 |
| C D R C 6 2 |

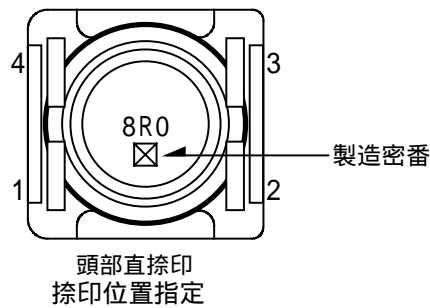
1. 外形

1-1. 寸法図(mm)

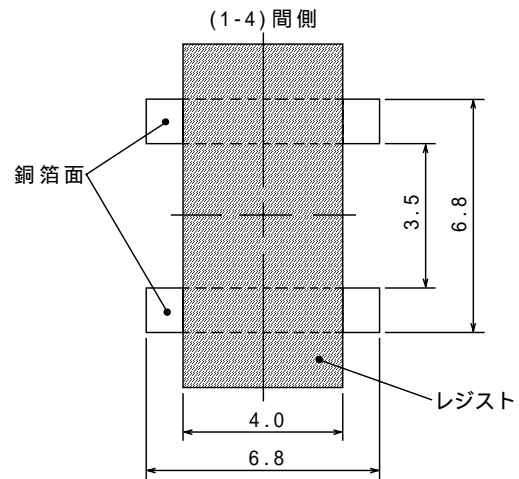


* 公差のない寸法は、参考値とする。

1-2. 捺印表示例

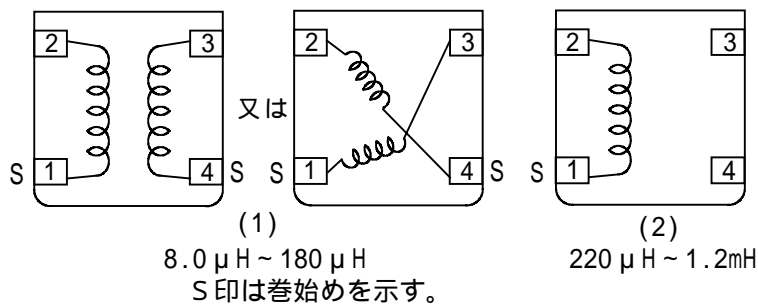


1-3. 推奨ランド図(mm)



2. コイル仕様

2-1. 端子接続図(裏面図)



注) 各々の端子を製品の下で続く場合は、必ずレジストを行って下さい。

RoHS

compliance

Cd: Max. 0.01wt%

others: Max. 0.1wt%

仕 様 書

| |
|--------|
| 形 名 |
| CDRC62 |

2-2. 電気的特性 (リール梱包の場合)

| NO. | 品 名 | 表示 | インダクタンス [以内] 1 | D.C.R. () [以下] (at 20) 3 | 定格電流 (mA) 2 | 自己共振 周波数 (MHz) (参考値) | スミダ コード |
|-----|----------------|-----|------------------------|---------------------------------------|-------------------|-------------------------------|------------|
| 01 | CDRC62NP-8R0NC | 8R0 | 8 μ H \pm 25% | 0.077 (0.062) | 764 | 38.6 | 4747-0069 |
| 02 | CDRC62NP-100NC | 100 | 10 μ H \pm 25% | 0.104 (0.083) | 712 | 33.9 | 4747-0070 |
| 03 | CDRC62NP-150NC | 150 | 15 μ H \pm 25% | 0.131 (0.105) | 556 | 27.6 | 4747-0071 |
| 04 | CDRC62NP-220NC | 220 | 22 μ H \pm 25% | 0.200 (0.160) | 467 | 23.0 | 4747-0072 |
| 05 | CDRC62NP-330NC | 330 | 33 μ H \pm 25% | 0.264 (0.211) | 374 | 18.9 | 4747-0073 |
| 06 | CDRC62NP-390NC | 390 | 39 μ H \pm 25% | 0.381 (0.305) | 354 | 16.9 | 4747-0074 |
| 07 | CDRC62NP-470NC | 470 | 47 μ H \pm 25% | 0.430 (0.344) | 320 | 15.0 | 4747-0075 |
| 08 | CDRC62NP-560NC | 560 | 56 μ H \pm 25% | 0.480 (0.384) | 290 | 14.0 | 4747-0076 |
| 09 | CDRC62NP-680NC | 680 | 68 μ H \pm 25% | 0.624 (0.499) | 248 | 12.2 | 4747-0077 |
| 10 | CDRC62NP-820NC | 820 | 82 μ H \pm 25% | 0.671 (0.537) | 237 | 11.4 | 4747-0078 |
| 11 | CDRC62NP-101MC | 101 | 100 μ H \pm 20% | 0.769 (0.615) | 212 | 10.2 | 4747-0080 |
| 12 | CDRC62NP-121MC | 121 | 120 μ H \pm 20% | 1.02 (0.816) | 194 | 9.4 | 4747-0082 |
| 13 | CDRC62NP-151MC | 151 | 150 μ H \pm 20% | 1.43 (1.14) | 174 | 8.6 | 4747-0083 |
| 14 | CDRC62NP-181MC | 181 | 180 μ H \pm 20% | 1.60 (1.28) | 160 | 7.5 | 4747-0084 |
| 15 | CDRC62NP-221MC | 221 | 220 μ H \pm 20% | 1.77 (1.42) | 142 | 7.2 | 4747-0085 |
| 16 | CDRC62NP-271MC | 271 | 270 μ H \pm 20% | 2.30 (1.84) | 130 | 6.5 | 4747-0086 |
| 17 | CDRC62NP-331MC | 331 | 330 μ H \pm 20% | 2.71 (2.16) | 117 | 5.8 | 4747-0087 |
| 18 | CDRC62NP-391MC | 391 | 390 μ H \pm 20% | 3.02 (2.42) | 108 | 5.3 | 4747-0088 |
| 19 | CDRC62NP-471MC | 471 | 470 μ H \pm 20% | 3.93 (3.14) | 98 | 4.8 | 4747-0089 |
| 20 | CDRC62NP-561MC | 561 | 560 μ H \pm 20% | 4.46 (3.57) | 91 | 4.4 | 4747-0090 |
| 21 | CDRC62NP-681MC | 681 | 680 μ H \pm 20% | 6.05 (4.84) | 83 | 4.0 | 4747-0091 |
| 22 | CDRC62NP-821MC | 821 | 820 μ H \pm 20% | 6.79 (5.43) | 75 | 3.7 | 4747-0093 |
| 23 | CDRC62NP-102MC | 102 | 1.0 mH \pm 20% | 9.98 (7.98) | 66 | 3.3 | 4747-0094 |
| 24 | CDRC62NP-122MC | 122 | 1.2 mH \pm 20% | 11.8 (9.44) | 62 | 3.0 | 4747-0095 |

仕 様 書

| |
|--------|
| 形 名 |
| CDRC62 |

2-3. 電気的特性 (箱梱包の場合)

| NO. | 品 名 | 表示 | インダクタンス [以内] 1 | D.C.R. () [以下] (at 20) 3 | 定格電流 (mA) 2 | 自己共振 周波数 (MHz) (参考値) | スミダ コード |
|-----|----------------|-----|------------------------|---------------------------------------|-------------------|-------------------------------|------------|
| 25 | CDRC62NP-8R0NB | 8R0 | 8 μ H \pm 25% | 0.077 (0.062) | 764 | 38.6 | 4747-0096 |
| 26 | CDRC62NP-100NB | 100 | 10 μ H \pm 25% | 0.104 (0.083) | 712 | 33.9 | 4747-0097 |
| 27 | CDRC62NP-150NB | 150 | 15 μ H \pm 25% | 0.131 (0.105) | 556 | 27.6 | 4747-0098 |
| 28 | CDRC62NP-220NB | 220 | 22 μ H \pm 25% | 0.200 (0.160) | 467 | 23.0 | 4747-0099 |
| 29 | CDRC62NP-330NB | 330 | 33 μ H \pm 25% | 0.264 (0.211) | 374 | 18.9 | 4747-0100 |
| 30 | CDRC62NP-390NB | 390 | 39 μ H \pm 25% | 0.381 (0.305) | 354 | 16.9 | 4747-0101 |
| 31 | CDRC62NP-470NB | 470 | 47 μ H \pm 25% | 0.430 (0.344) | 320 | 15.0 | 4747-0102 |
| 32 | CDRC62NP-560NB | 560 | 56 μ H \pm 25% | 0.480 (0.384) | 290 | 14.0 | 4747-0104 |
| 33 | CDRC62NP-680NB | 680 | 68 μ H \pm 25% | 0.624 (0.499) | 248 | 12.2 | 4747-0105 |
| 34 | CDRC62NP-820NB | 820 | 82 μ H \pm 25% | 0.671 (0.537) | 237 | 11.4 | 4747-0106 |
| 35 | CDRC62NP-101MB | 101 | 100 μ H \pm 20% | 0.769 (0.615) | 212 | 10.2 | 4747-0107 |
| 36 | CDRC62NP-121MB | 121 | 120 μ H \pm 20% | 1.02 (0.816) | 194 | 9.4 | 4747-0108 |
| 37 | CDRC62NP-151MB | 151 | 150 μ H \pm 20% | 1.43 (1.14) | 174 | 8.6 | 4747-0109 |
| 38 | CDRC62NP-181MB | 181 | 180 μ H \pm 20% | 1.60 (1.28) | 160 | 7.5 | 4747-0110 |
| 39 | CDRC62NP-221MB | 221 | 220 μ H \pm 20% | 1.77 (1.42) | 142 | 7.2 | 4747-0111 |
| 40 | CDRC62NP-271MB | 271 | 270 μ H \pm 20% | 2.30 (1.84) | 130 | 6.5 | 4747-0112 |
| 41 | CDRC62NP-331MB | 331 | 330 μ H \pm 20% | 2.71 (2.16) | 117 | 5.8 | 4747-0113 |
| 42 | CDRC62NP-391MB | 391 | 390 μ H \pm 20% | 3.02 (2.42) | 108 | 5.3 | 4747-0115 |
| 43 | CDRC62NP-471MB | 471 | 470 μ H \pm 20% | 3.93 (3.14) | 98 | 4.8 | 4747-0116 |
| 44 | CDRC62NP-561MB | 561 | 560 μ H \pm 20% | 4.46 (3.57) | 91 | 4.4 | 4747-0117 |
| 45 | CDRC62NP-681MB | 681 | 680 μ H \pm 20% | 6.05 (4.84) | 83 | 4.0 | 4747-0118 |
| 46 | CDRC62NP-821MB | 821 | 820 μ H \pm 20% | 6.79 (5.43) | 75 | 3.7 | 4747-0119 |
| 47 | CDRC62NP-102MB | 102 | 1.0 mH \pm 20% | 9.98 (7.98) | 66 | 3.3 | 4747-0120 |
| 48 | CDRC62NP-122MB | 122 | 1.2 mH \pm 20% | 11.8 (9.44) | 62 | 3.0 | 4747-0121 |

1 : 測定周波数 L 8.0 μ H \sim 82 μ H ; at 100 kHz
100 μ H \sim 1.2mH ; at 1 kHz

2 : 定格電流は直流重畳特性に於て、インダクタンスが公称値より-25%となる電流もしくは直流電流を流した時のコイルの発熱が t = 40 となる電流値の少ない方の値。(Ta=20 を基準とする。)

3 : ()内は、標準値とする。

3. 保存温度範囲 - 40 \sim + 100
使用温度範囲 - 40 \sim + 100 (コイルの発熱を含む。)