

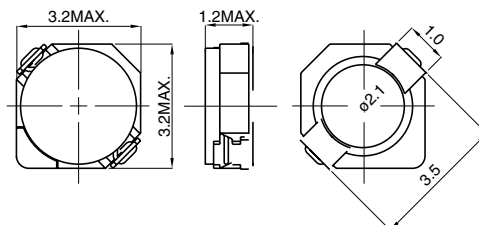
NEW

CDRH2D11

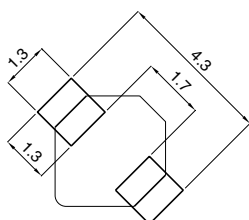
OUTLINE

It is suitable for the smaller footprint and lower profile demand for chopper DC/DC converter circuit.
This type is the smaller size and lower profile type of CDRH2D16. (H : Max.1.2 mm).
Application is DC/DC converter for LCD of PDA.

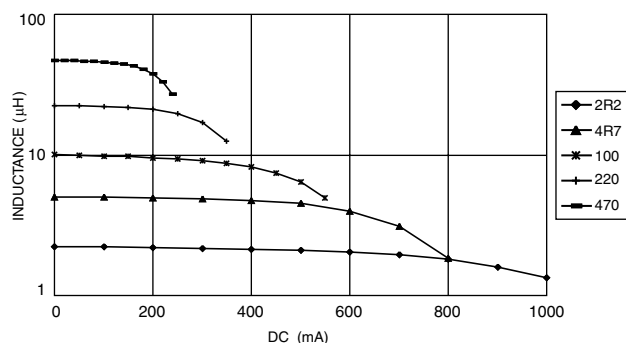
DIMENSIONS (mm)



LAND PATTERNS (mm)



SATURATION CURRENT



SPECIFICATIONS

Parts No.	Stamp	Inductance <WITHIN>*1 (at 100kHz)	D.C.R.(mΩ)<MAX.> (at 20°C)*2	DC Superimposition(A)*3		Temperature rise(A) *4
				(at 20°C)	(at 100°C)	
CDRH2D11-1R5NC	A	1.5μH±30%	68(54)	0.90	0.68	1.48
CDRH2D11-2R2NC	C	2.2μH±30%	98(78)	0.78	0.58	1.27
CDRH2D11-3R3NC	E	3.3μH±30%	123(98)	0.60	0.45	1.02
CDRH2D11-4R7NC	G	4.7μH±30%	170(135)	0.50	0.37	0.88
CDRH2D11-6R8NC	I	6.8μH±30%	260(210)	0.44	0.33	0.88
CDRH2D11-100NC	K	10.0μH±30%	400(320)	0.35	0.26	0.65

*1: Measurement frequency of inductance : at 100kHz. 1V

*2: () is typical value.

*3: DC superimposition : It indicates the D.C. current value when inductance value become more than 65% of the nominal one.

*4: The temperature rise : The value of D.C. current when temperature rise is Δt=40°C (Ta=20°C).

Sales Contact

North America
1701 Golf Road, Tower 3
Suite 400, Rolling
Meadows, IL 60008, USA
Tel: (1) 847 545-6700
Fax: (1) 847 545-6720

Japan
Nihonbashi- ingyocho
2-Chome, Chuo-ku,
Tokyo, Japan
Tel: (81) 03 3667-3301
Fax: (81) 03 3667-3456

Hong Kong
14/F, Eastern Centre,
1065 King's Road, Quarry
Road, Hong Kong
Tel: (852) 2880-6688
Fax: (852) 2880-9596

Taiwan
No. 171, Futech Street,
Hsin-I, Taipei, Taiwan,
ROC
Tel: (886) 2 2726-2177
Fax: (886) 2 2728-2726

Singapore
996 Bendemeer
Road #04-05 to 06
Singapore 339944
Tel: (65) 2963-388
Fax: (65) 2963-390

Europe
Chaussee de Tervuren113A,
1160 Brussels
Belgium
Email:
europe.sales@hk.sumida.com