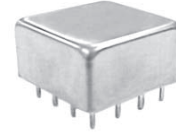


BAND PASS FILTERS

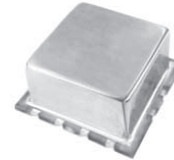
24 PIN - THROUGH HOLE MOUNT HIGH SUPPRESSION



Fc (MHz)	Insertion Loss(dB) (Max)	1 dB Ripple BW (MHz)	20 dB BW (MHz)	40 dB BW (MHz) (50 dB on low end)	PACKAGE	PIN-OUT (See Below)	MODEL
10.7	3.5	0.3	9.63-11.8	8.5-12.85	124	1	FBP-11
21.4	3.5	1.0	19.26-23.6	17-25.70	124	1	FBP-21
30.0	3.5	1.5	27-33	24-36	124	1	FBP-30
45.0	3.5	2.2	40-50	35-56	124	1	FBP-45
50.0	4.0	2.5	45-56	40-62	124	1	FBP-50
60.0	4.0	3.0	54-67	48-74	124	1	FBP-60
70.0	4.6	3.5	63-77	56-86	124	1	FBP-70
140	5.0	8.0	125-160	110-175	124	1	FBP-140
200	6.0	12.0	180-230	155-250	124	1	FBP-200

NOTE: All units meet or exceed applicable MIL-F-18327.
For other frequencies, please contact Synergy directly.

LEADLESS SURFACE-MOUNT MODELS HIGH SUPPRESSION



Fc (MHz)	Insertion Loss(dB) (Max)	1 dB Ripple BW (MHz)	20 dB BW (MHz)	40 dB BW (MHz) (50 dB on low end)	PACKAGE	PIN-OUT (See Below)	MODEL
10.7	3.5	0.3	9.63-11.8	8.5-12.85	124S	1	FBS-11
21.4	3.5	1.0	19.26-23.6	17-25.70	124S	1	FBS-21
30.0	3.5	1.5	27-33	24-36	124S	1	FBS-30
45.0	3.5	2.2	40-50	35-56	124S	1	FBS-45
50.0	4.0	2.5	45-56	40-62	124S	1	FBS-50
60.0	4.0	3.0	54-67	48-74	124S	1	FBS-60
70.0	4.6	3.5	63-77	56-86	124S	1	FBS-70
140	5.0	8.0	125-160	110-175	124S	1	FBS-140
200	6.0	12.0	180-230	155-250	124S	1	FBS-200

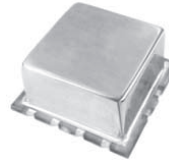
NOTE: All units meet or exceed applicable MIL-F-18327.
For other frequencies and impedances please contact us.
Impedance is 50 Ohms for all models.

For pin location and package outline drawings, see back pages.

PIN-OUT TABLE

INPUT	OUTPUT	CASE GROUND
1	16	All Other

BAND PASS FILTERS



LEADLESS SURFACE-MOUNT MODELS

CENTER FREQUENCY (MHz)	INSERTION LOSS (dB) Max	PASSBAND (MHz)	35 dB BANDWIDTH (MHz)	VSWR	PACKAGE	PIN-OUT (See Below)	MODEL
10.7	1.7	10.2 - 11.2	5.1 - 22.5	1.5:1	124S	1	FNS-10.7
21.4	1.7	20.3 - 22.5	10.2 - 45.0	1.5:1	124S	1	FNS-21.4
30.0	1.7	28.5 - 31.5	14.3 - 63.0	1.5:1	124S	1	FNS-30
45.0	1.7	42.8 - 47.3	21.3 - 94.5	1.5:1	124S	1	FNS-45
50.0	1.7	47.5 - 52.5	23.8 - 105	1.5:1	124S	1	FNS-50
60.0	1.7	57.0 - 63.0	28.4 - 126	1.5:1	124S	1	FNS-60
70.0	1.7	66.5 - 73.5	33.3 - 147	1.5:1	124S	1	FNS-70
100	2.7	95.0 - 105	47.5 - 210	1.5:1	124S	1	FNS-100
120	2.7	114 - 126	57.0 - 252	1.5:1	124S	1	FNS-120
140	2.7	133 - 147	66.5 - 294	1.5:1	124S	1	FNS-140
160	2.7	152 - 168	76.0 - 336	1.5:1	124S	1	FNS-160
180	2.7	171 - 189	85.5 - 378	1.5:1	124S	1	FNS-180
200	2.7	190 - 210	95 - 420	1.5:1	124S	1	FNS-200
250	3.0	238 - 262.5	119 - 525	1.5:1	124S	1	FNS-250
300	3.0	285.7 - 315	142.8 - 630	1.5:1	124S	1	FNS-300
350	3.0	333.3 - 367.5	166.7 - 735	1.5:1	124S	1	FNS-350
400	3.0	380.9 - 420	190.5 - 840	1.5:1	124S	1	FNS-400
450	3.0	428.6 - 472.5	214.3 - 945	1.5:1	124S	1	FNS-450
500	3.0	476.2 - 525	238.1 - 1050	1.5:1	124S	1	FNS-500



24 PIN - THROUGH HOLE MOUNT

CENTER FREQUENCY (MHz)	INSERTION LOSS (dB) Max	PASSBAND (MHz)	35 dB BANDWIDTH (MHz)	VSWR	PACKAGE	PIN-OUT (See Below)	MODEL
10.7	1.7	10.2 - 11.2	5.1 - 22.5	1.5:1	124	1	FNP-10.7
21.4	1.7	20.3 - 22.5	10.2 - 45.0	1.5:1	124	1	FNP-21.4
30.0	1.7	28.5 - 31.5	14.3 - 63.0	1.5:1	124	1	FNP-30
45.0	1.7	42.8 - 47.3	21.3 - 94.5	1.5:1	124	1	FNP-45
50.0	1.7	47.5 - 52.5	23.8 - 105	1.5:1	124	1	FNP-50
60.0	1.7	57.0 - 63.0	28.4 - 126	1.5:1	124	1	FNP-60
70.0	1.7	66.5 - 73.5	33.3 - 147	1.5:1	124	1	FNP-70
100	2.7	95.0 - 105	47.5 - 210	1.5:1	124	1	FNP-100
120	2.7	114 - 126	57.0 - 252	1.5:1	124	1	FNP-120
140	2.7	133 - 147	66.5 - 294	1.5:1	124	1	FNP-140
160	2.7	152 - 168	76.0 - 336	1.5:1	124	1	FNP-160
180	2.7	171 - 189	85.5 - 378	1.5:1	124	1	FNP-180
200	2.7	190 - 210	95 - 420	1.5:1	124	1	FNP-200

NOTE: All units meet or exceed applicable MIL-F-18327.
For other frequencies and impedances please contact us.
Impedance is 50 Ohms for all models.

For pin location and package outline drawings, see back pages.

PIN-OUT TABLE

INPUT	OUTPUT	CASE GROUND
1	16	All Other



BAND PASS FILTERS



LEADLESS SURFACE-MOUNT MODELS

CENTER FREQUENCY (MHz)	INSERTION LOSS (dB) Max	PASSBAND (MHz)	20 dB BANDWIDTH (MHz)	40 dB BANDWIDTH (MHz)	PACKAGE	PIN-OUT (See Below)	MODEL
10.7	1.5	9.80 - 11.6	7.49 - 13.9	3.40 - 32.1	102S	1	FIS-10.7
21.4	1.5	19.6 - 23.2	14.9 - 27.8	6.80 - 64.2	102S	1	FIS-21.4
30.0	1.5	27.5 - 32.5	21.0 - 39.0	9.30 - 90.0	102S	1	FIS-30
45.0	1.5	41.2 - 48.8	31.5 - 58.5	13.0 - 135	102S	1	FIS-45
50.0	1.5	45.8 - 54.3	35.0 - 65.0	15.8 - 150	102S	1	FIS-50
60.0	1.5	54.9 - 65.1	42.0 - 78.0	19.0 - 180	102S	1	FIS-60
70.0	1.5	64.0 - 75.9	49.0 - 91.0	20.3 - 210	102S	1	FIS-70
100	1.5	91.5 - 108.5	70.0 - 130	30.3 - 300	102S	1	FIS-100
120	1.5	109.8 - 130.2	84.0 - 156	36.0 - 360	102S	1	FIS-120
140	1.5	128.1 - 151.9	98.0 - 182	42.7 - 420	102S	1	FIS-140



8 PIN - RELAY HEADER

CENTER FREQUENCY (MHz)	INSERTION LOSS (dB) Max	PASSBAND (MHz)	20 dB BANDWIDTH (MHz)	40 dB BANDWIDTH (MHz)	PACKAGE	PIN-OUT (See Below)	MODEL
10.7	1.5	9.80 - 11.6	7.49 - 13.9	3.40 - 32.1	102	1	FIP-10.7
21.4	1.5	19.6 - 23.2	14.9 - 27.8	6.80 - 64.2	102	1	FIP-21.4
30.0	1.5	27.5 - 32.5	21.0 - 39.0	9.30 - 90.0	102	1	FIP-30
45.0	1.5	41.2 - 48.8	31.5 - 58.5	13.0 - 135	102	1	FIP-45
50.0	1.5	45.8 - 54.3	35.0 - 65.0	15.8 - 150	102	1	FIP-50
60.0	1.5	54.9 - 65.1	42.0 - 78.0	19.0 - 180	102	1	FIP-60
70.0	1.5	64.0 - 75.9	49.0 - 91.0	20.3 - 210	102	1	FIP-70
100	1.5	91.5 - 108.5	70.0 - 130	30.3 - 300	102	1	FIP-100
120	1.5	109.8 - 130.2	84.0 - 156	36.0 - 360	102	1	FIP-120
140	1.5	128.1 - 151.9	98.0 - 182	42.7 - 420	102	1	FIP-140

NOTE: All units meet or exceed applicable MIL-F-18327.
For other frequencies and impedances please contact us.
Impedance is 50 Ohms for all models.

For pin location and package outline drawings, see back pages.

PIN-OUT TABLE

INPUT	OUTPUT	CASE GROUND
1	8	All Other